



IMPORTANT WARRANTY & INSTALLATION
INSTRUCTIONS ATTACHED

*Please Forward All Attached Information to Consumer
Warranty Not Valid Unless Returned to Volant Performance*



Please be sure to review the enclosed instructions prior to beginning the installation process.

Please take time to read and understand these installation instructions.

Volant recommends that the installation of this system be performed by a qualified service center or professional installer who has the necessary equipment, tools and experienced personnel. However, if you decide to perform this install the use of an additional person may be required.

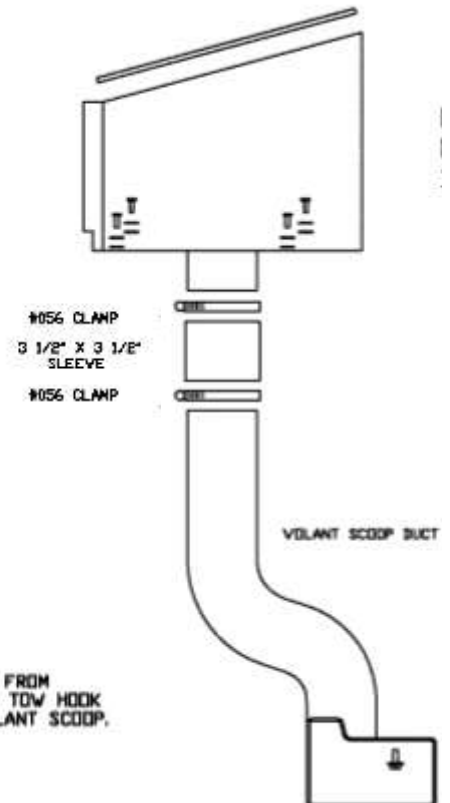
CAUTION: Never work on a hot engine bay. Allow time for the vehicle to cool.

Recommended Tools:

- Flathead Screwdriver
- Assorted Socket-Set
- Ratchet
- Ratchet Extension

Please confirm that all parts are present according to the bill of materials before beginning the installation.

Bill of Materials							
1	Plastic air box	1	Lid gasket	4	¼ x 7/8 Washers	3	10/32 x 3/4 Allen screws
1	Plastic air duct	5	¼ x 5/8 Rubber washers	1	3.75 x 4.5 sleeve	1	Allen wrench key
1	MAF Adapter	5	¼ -20 x .50' Truss head screw	1	Pro5 or PowerCore [®] Filter	1	D-526-6 CARB Decal
1	Aluminum air box lid	4	6mm – 25 Bolts	2	#60 Clamps	1	Throttle body grommet
2	MAF sensor gaskets	4	¼ Lock washers	1	#72 Clamp		



35853 PARTS LIST	
1	VOLANT SCOOP DUCT
1	3 1/2" X 3 1/2" SLEEVE
2	#056 CLAMPS

NOTE: VOLANT FILTER BOX NOT INCLUDED WITH 1500 SERIES AIR SCOOP

REMOVE STOCK BOLT FROM TOW HOOK, REATTACH TOW HOOK ALONG WITH THE VOLANT SCOOP.

Installation Instructions:

1. Before you begin the install you must disconnect the negative battery cable. Failure to disconnect the battery may cause a check engine light or damage to your engine. **(Fig A)**
2. Remove the 2 nuts holding the engine cover in place and remove it from the engine compartment. **Save for reinstallation. (Fig B)**
3. Loosen the clamp holding the factory air duct to the throttle body. **(Fig C)**
4. Loosen the clamp holding the factory air duct to the MAF sensor. **(Fig D)**
5. Using a small pry tool remove the tree rivet from the factory air duct. **(Fig E)**
6. Remove the factory air duct from the engine compartment. **Save in case vehicle needs to be returned to stock. (Fig F)**
7. Disconnect the MAF sensor harness from the MAF sensor. **(Fig G)**
8. Loosen the clamp holding the MAF sensor to the factory air box. **(Fig H)**
9. Remove the factory MAF sensor. **Save for reinstallation. (Fig I)**
10. Lift up on the factory air box and remove it from the engine compartment. **Save in case vehicle needs to be returned to stock. (Fig J)**
11. Remove the 4 - 10mm bolts holding the air box mounting plate. **Save for reinstallation. (Fig K)**
12. Remove the factory air box mounting plate. **Save in case vehicle needs to be returned to stock. (Fig L)**
13. Set the MAF sensor and Filter adapter onto a workbench. **(Fig M)**
14. To correctly align the sensor and adapter place the sensor into the adapter and spin the sensor until the inserts line up with the holes on the sensor. The correct alignment will be needed later. **(Fig N)**
15. Place 1 MAF gasket onto the MAF sensor. **(Fig O)**
16. Place the MAF sensor onto the air box and slide the 3 allen screw's through the holes. **(Fig P)**

WARNING: Over tightening hardware may alter the integrity of the Volant air intake system.

17. Place 1 MAF sensor gasket on the inside of the air box and tighten the adapter in place. **(Fig Q)**

CONTINUED ON NEXT PAGE 

18. Place the Volant box into the factory position. **(Fig R)**
19. Tighten the air box in place using the 4 - 10mm x 25 bolts, 1/4 lock washers and 7/8 washers. **(Fig S)**
20. Press the Pro5 Filter #5119 or Donaldson[®] PowerCore[®] Filter #61517 onto the filter flange. **(Fig T)**
21. Tighten the filter into using a 5/16 nut driver or socket wrench only. **(Fig U)**
22. Remove the protective film on the lid and place it on top of the Volant box. **(Fig V)**
23. Tighten the lid in place using the provided truss head screws and rubber washers. **(Fig W)**
24. Attach the MAF sensor harness to the MAF sensor. **(Fig X)**
25. Press the 3 3/4 x 4 1/2 sleeve onto the MAF sensor with a #60 clamp. **(Fig Y)**
26. Tighten the #60 clamp into place using a 5/16 nut driver or socket only. **(Fig Z)**
27. Press the supplied throttle body grommet onto the throttle body end of the Volant air duct. **(Fig AA)**
28. Press the Volant air duct into the sleeve and onto the throttle body. **(Fig BB)**
29. Tighten the sleeve onto the air duct with a #60 clamp and a 5/16 socket or nut driver only. **(Fig CC)**
30. Tighten the #72 clamp onto the throttle body using a 5/16 socket or nut driver only. **(Fig DD)**
31. Place the supplied CARB EO label near the system, this label will be needed to pass a visual smog test. **(Fig EE)**
32. Reinstall the factory engine cover and negative battery cable, Check all connections before starting the vehicle and after 150 and 350 miles of normal driving. **(Fig FF)**

***Check that this air intake complies with your Federal, State and Local laws. We recommend saving your stock system.**

BEFORE ROAD TESTING

1. Start engine, leaving the transmission in park and securing the parking brake.
2. Make sure to look and listen for any unusual noises or air leaks. Repair problems if needed.
3. Once completed it will be necessary to check periodically, after a few heat cycles, for realignment and tightening of all connections.

CARE AND CLEANING

Check the Pro-5 cotton reusable filter periodically and remove any excessive dirt build-up by tapping the filter on the ground and brushing off the loosened dirt. Clean the filter by using a two stage cleaning kit to thoroughly clean and re-oil the filter. Re-oil every 10,000 miles without cleaning to improve filtering in sand and dirt. Clean only when dirt is very excessive or 50,000 miles.

PICTURES ON NEXT PAGE 

Installation Pictures



Fig. A



Fig. B



Fig. C



Fig. D



Fig. E



Fig. F

CONTINUED ON NEXT PAGE 

Installation Pictures



Fig. G



Fig. H



Fig. I



Fig. J



Fig. K



Fig. L

CONTINUED ON NEXT PAGE 

Installation Pictures



Fig. M



Fig. N



Fig. O



Fig. P



Fig. Q



Fig. R

CONTINUED ON NEXT PAGE 

Installation Pictures



Fig. S



Fig. T

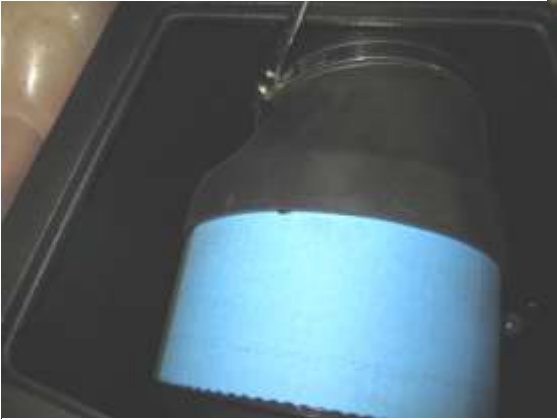


Fig. U



Fig. V



Fig. W



Fig. X

CONTINUED ON NEXT PAGE 

Installation Pictures



Fig. Y



Fig. Z



Fig. AA



Fig. BB



Fig. CC



Fig. DD

CONTINUED ON NEXT PAGE



Installation Pictures



Fig. EE



Fig. FF