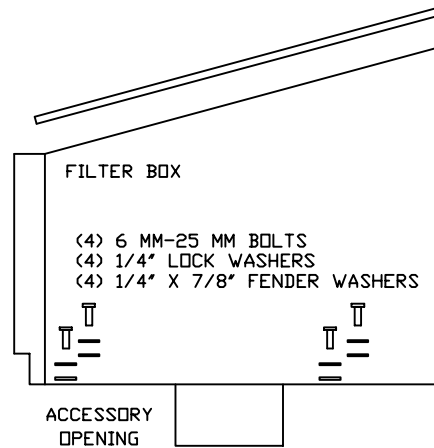


VOLANT COOL AIR INTAKES
 PART NO.: 15053/15153
 INSTALLATION INSTRUCTIONS

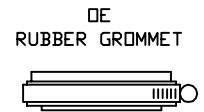
15053/15153 PARTS LIST

1	FILTER BOX	4	1/4" LOCK WASHERS	2	ADAPTER GASKETS
1	FILTER BOX LID	1	#054 CLAMPS	1	5/13" HEX KEY
1	FILTER BOX ADAPTER	1	#060 CLAMPS	1	RUBBER GROMMET - ONLY 15153
1	VOLANT AIR FLOW DUCT	4	6 MM-25 BOLTS		
1	RAM FILTER W/CLAMP	3	10-32 X 3/4" BOLTS		
5	1/4"-20 TRUSS HEAD SCREWS	4	1/4" X 7/8" FENDER WASHERS		
5	1/4" RUBBER WASHERS	1	3 3/4" X 3 1/2" SLEEVE		

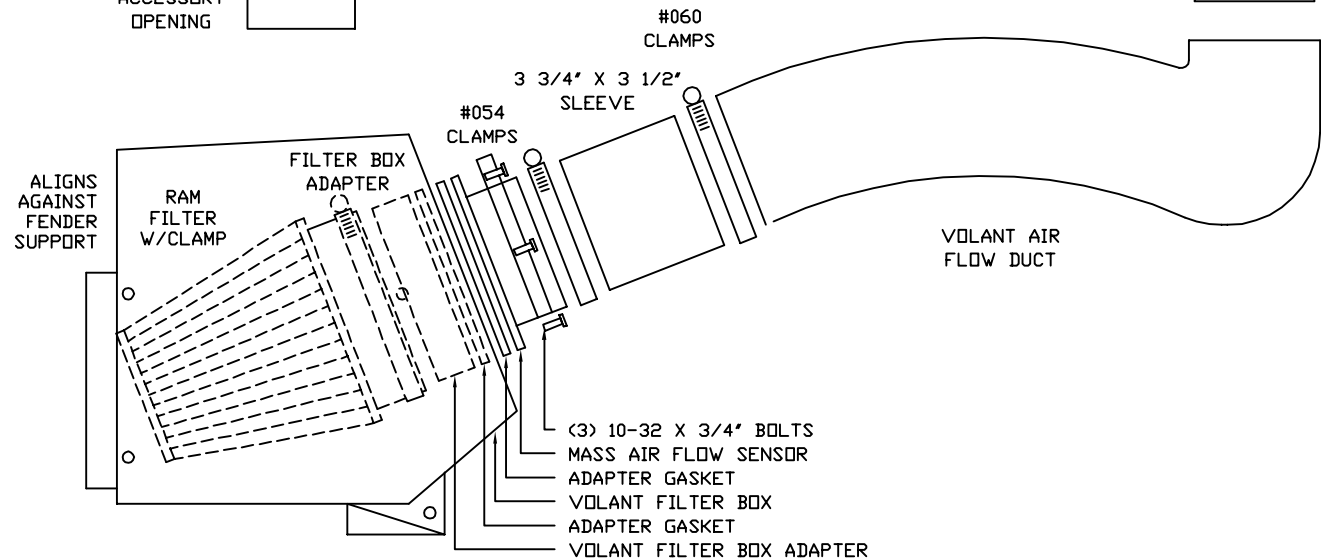
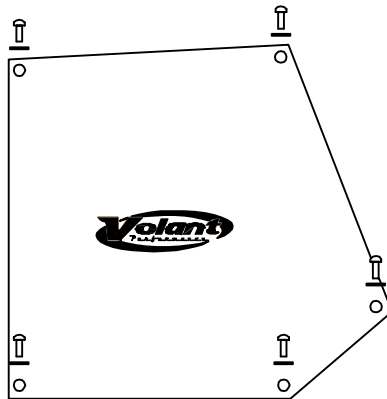


NOTE: ON PART # 15153
 AN OE RUBBER GROMMET
 WILL BE SUPPLIED BY
 VOLANT.

PART # 15053 USE THE
 OE RUBBER GROMMET
 SUPPLIED ON THE STOCK
 DUCT.



(5) 1/4"-20 TRUSS HEAD SCREWS
 (5) 1/4" RUBBER WASHERS





READ INSTRUCTIONS THOROUGHLY BEFORE DISASSEMBLING. DO NOT SKIP ANY STEPS.

INSTALLATION INSTRUCTIONS PART NO. 15153

Installation Instructions:

1. Disconnect the negative battery cable.
2. Remove the engine cover.
3. Loosen the clamp holding the air duct to the throttle body and the clamp holding the duct to the MAF sensor.
4. Remove the clamp holding the duct to the coolant hose and remove the duct.
5. Remove the MAF from the rubber grommet.
6. Pull up on the factory air box and remove it.
7. Remove the air box mounting tray.
8. Mount the volant air box into the factory position with the hardware provided.
9. Line up the inserts in the filter box adapter with the holes in the MAF sensor, place the MAF gasket onto the MAF sensor and press onto the outside of the volant box then press the filter adapter onto the inside of the volant box and tighten the two together using the allen screws provided.
10. Attach the 3 3/4 x 4.5 sleeve to the MAF sensor and tighten with a #60 clamp.
11. Press the throttle body grommet onto the volant air duct.
12. Slide the duct into the sleeve and press the duct onto the throttle body and tighten the #60 and #72 clamp.
13. Attach the ram filter to the filter adapter and tighten the clamp.
14. Attach the air box lid to the box and tighten with the hardware cover.
15. Reinstall the engine cover.
16. Reattach the negative battery cable.

WARNING: OVER TIGHTENING HARDWARE MAY ALTAR THE INTEGRITY OF THE VOLANT AIR INTAKE SYSTEM.

BEFORE ROAD TESTING

1. Start engine, leaving the transmission in park and securing the parking brake.
2. Make sure to look and listen for any unusual noises or air leaks. Repair problems if needed.
3. Once completed it will be necessary to check periodically for realignment and tightening of all connections.
4. Once all tests are completed, enjoy the performance of your new Air Intake System.

CARE AND CLEANING

Check the cotton reusable filter periodically and remove any excessive dirt build-up by tapping the filter on the ground and brushing off the loosened dirt. Clean the filter by using Volant's Filter Recharger Kit. Volant's Filter Recharger Kit is designed to restore original air flow. Re-oil every 10,000 miles without cleaning to improve filtering in sand and dirt. Clean only when dirt is very excessive or 50,000 miles.

RECOMMENDED SERVICE PARTS

RECOMMENDED SERVICE PARTS	PART NO.
POWERCORE FILTER UPGRAGE	61517
COTTON FILTER REPLACEMENT	5119
PREFILTER	51906
CLEANING KIT	5100

APPLICATION GUIDE

MY	MAKE	MODEL	ENG.	
99-07	CLAS-SIC	GM	SILVER/SIERRA	4.8/5.3/6.0L
00-06	GM	TAHOE/YUKON		4.8/5.3/6.0L
00-06	CHEVROLET	SUBURBAN		4.8/5.3/6.0L
00-06	CHEVROLET	AVALANCHE		4.8/5.3/6.0L
00-06	CADILLAC	ESCALADE		4.8/5.3/6.0L

INSTALL

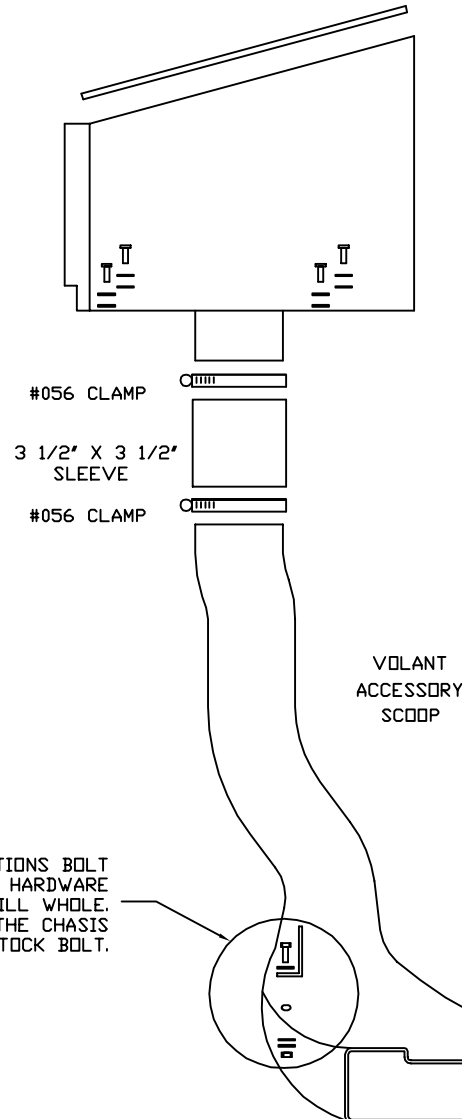


VOLANT COOL AIR INTAKES
 PART NO.: 35060
 INSTALLATION INSTRUCTIONS



35060 PARTS LIST

1	VOLANT ACCESSORY SCOOP
2	#056 CLAMPS
1	6 MM X 25 BOLT
1	1/4" LOCK WASHER
2	1/4" WASHER
1	6 MM NUT
1	VOLANT BRACKET



NOTE: VOLANT FILTER BOX
 NOT INCLUDED WITH PART NO. 35060
 2500 HD/3500 HD SCOOP



NOTE: FOR ALL GMC APPLICATIONS BOLT THE BRACKET WITH THE HARDWARE PROVIDED TO THIS DRILL WHOLE. ATTACH THE BRACKET TO THE CHASIS WITH A STOCK BOLT.

NOTE: FOR ALL CHEVY APPLICATIONS BOLT THE BRACKET WITH THE HARDWARE PROVIDED TO THIS DRILL WHOLE. ATTACH THE BRACKET TO THE CHASIS WITH A STOCK BOLT.

- 6 MM X 25 BOLT
- 1/4" WASHER
- VOLANT BRACKET
- VOLANT ACCESSORY SCOOP
- 1/4" WASHER
- 1/4" LOCK WASHER
- 6 MM NUT