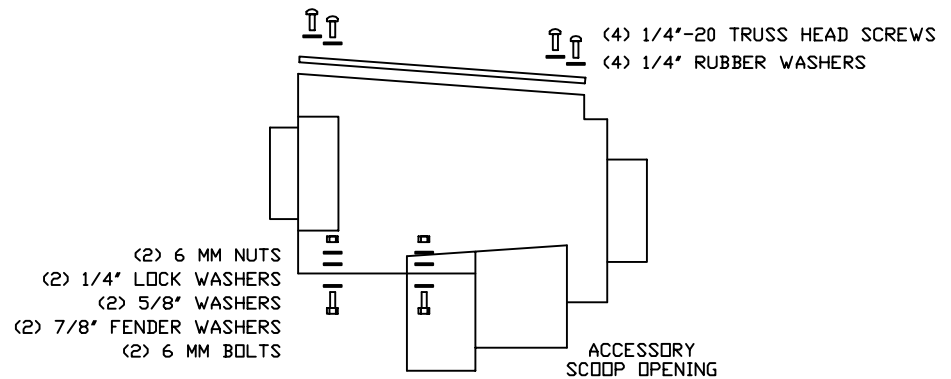
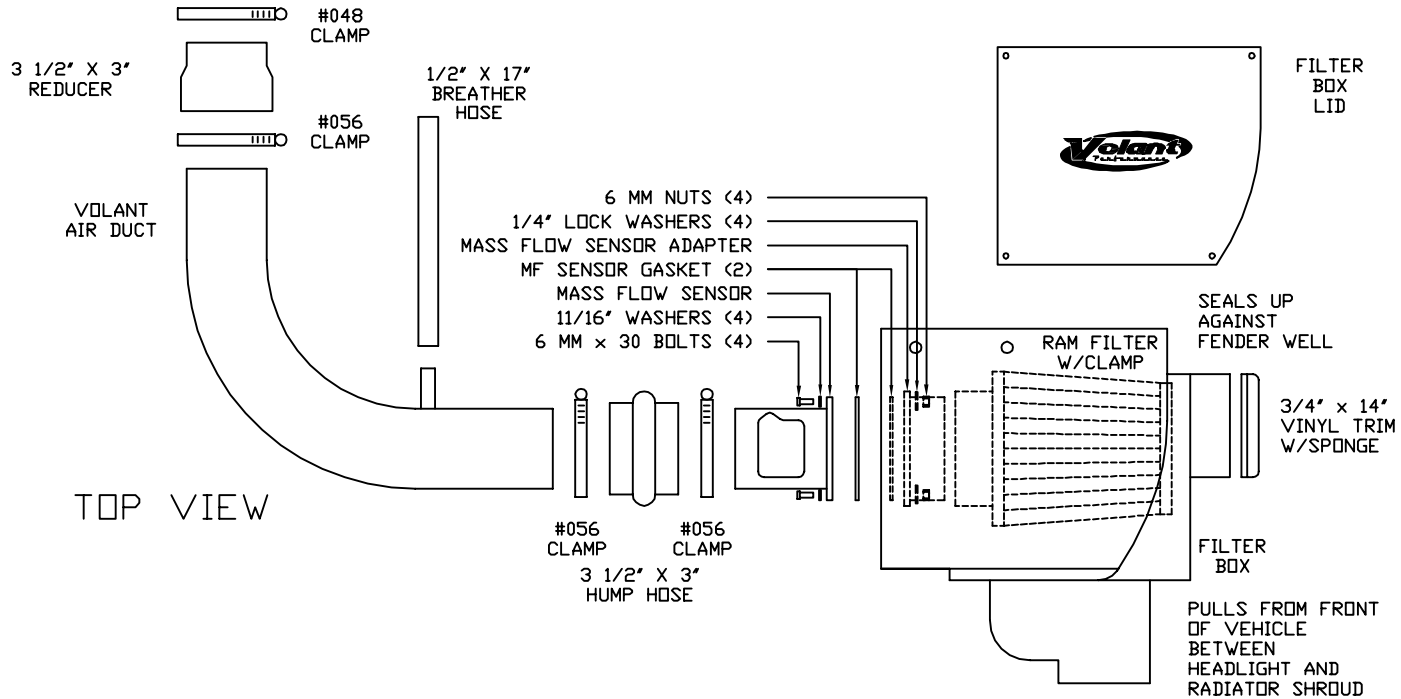


VOLANT COOL AIR INTAKES  
 PART NO.: 19746  
 INSTALLATION INSTRUCTIONS

19746 PARTS LIST

1	FILTER BOX	1	3 1/2" X 3" REDUCER	6	6 MM X 30 BOLTS
1	FILTER BOX LID	1	3 1/2" X 3" HUMP HOSE	2	5/8" WASHERS
1	VOLANT AIR DUCT	4	1/4"-20 TRUSS HEAD SCREWS	2	7/8" FENDER WASHERS
1	MASS FLOW SENSOR ADAPTER	4	1/4" RUBBER WASHERS	2	MASS FLOW SENSOR GASKET
1	RAM FILTER W/CLAMP	6	6 MM NUTS	1	1/2" X 17" BREATHER HOSE
1	#048 CLAMPS	6	1/4" LOCK WASHERS	1	3/4" X 14" VINYL TRIM
3	#056 CLAMPS	4	1/4" WASHERS		





**READ INSTRUCTIONS THOROUGHLY BEFORE DISASSEMBLING.  
DO NOT SKIP ANY STEPS.**

**INSTALLATION INSTRUCTIONS PART NO. 19746**

**Installation Instructions:**

1. Disconnect the negative battery cable.
2. Disconnect and remove the crank case breather hose from the air intake duct and valve cover fitting.
3. Loosen the hose clamp at the throttle body and pull the duct off the throttle body. Follow the electric harness from the stock filter box and disconnect the plug from the harness on the chassis.
4. Pull the filter box up and from the rubber grommets located underneath the box. Remove the entire filter assembly from the vehicle.
5. Separate your stock filter box in two by unclipping the filter box latch.
6. To remove the encased mass flow sensor, insert a flathead screwdriver in one of the small slots located on the lid of the half filter box with the wire harness. Carefully pry open the lid and disconnect the mass flow sensor inside. Remove the lid and the mass flow sensor completely.
7. Unscrew the two bolts that fasten the sensor to the lid with a 10mm socket and ratchet wrench
8. Relocate the mass flow sensor along with the sensor gasket to the outside of the Volant filter box and the Volant sensor adapter and gasket inside. Secure them both with the four (4) 1/2"-20 bolts, 1/4" washers and nuts provided.
9. Reconnect the mass flow sensor harness back to the engine harness.
10. Apply the trim sponge onto the large round opening on the Volant filter box with the 3" lip. Install the Volant filter box on the driver side where the stock unit pulled its air. Remove the center bolts on the mounting tray. This will allow to mount the Volant box to the vehicle.
11. Slip the 3" end of the rubber reducer along with the #048 clamp around throttle body. Slip over the #056 clamp over the reducer and insert the Volant air duct in the reducer. Make sure the Volant logo faces towards the front of the truck. Do not tighten until entire unit is in place, this will allow adjustment.
12. Slip one end of the 3 1/2" hump hose over the Volant air duct.
13. Connect the other end around the mass flow sensor. Open the two #056 clamps and wrap both around the 3 1/2" hump hose. Adjust and tighten all clamps.
14. Connect the provided 1/2" hose to the Volant air duct and the valve cover fittings.
15. Then plug in the mass flow sensor.
16. Install the Volant filter to the adapter inside the Volant filter box
17. Cover the filter box with the lid and stainless steel screws provided
18. Make sure everything is tightened and properly connected.
19. Reconnect the negative battery cable.

**WARNING: OVER TIGHTENING HARDWARE MAY ALTAR THE INTEGRITY OF THE VOLANT AIR INTAKE SYSTEM.**

**BEFORE ROAD TESTING**

1. Start engine, leaving the transmission in park and securing the parking brake.
2. Make sure to look and listen for any unusual noises or air leaks. Repair problems if needed.
3. Once completed it will be necessary to check periodically for realignment and tightening of all connections.
4. Once all tests are completed, enjoy the performance of your new Air Intake System.

**CARE AND CLEANING**

Check the cotton reusable filter periodically and remove any excessive dirt build-up by tapping the filter on the ground and brushing off the loosened dirt. Clean the filter by using Volant's Filter Recharger Kit. Volant's Filter Recharger Kit is designed to restore original air flow. Re-oil every 10,000 miles without cleaning to improve filtering in sand and dirt. Clean only when dirt is very excessive or 50,000 miles.

**RECOMMENDED SERVICE PARTS**

RECOMMENDED SERVICE PARTS	PART NO.
POWERCORE FILTER UPGRADE	61503
REPLACEMENT COTTON FILTER	5111
PREFILTER	51906
CLEAING KIT	5100

**APPLICATION GUIDE**

MY	MAKE	MODEL	ENG.
04-05	FORD	F-150	4.6L

**INSTALL**

