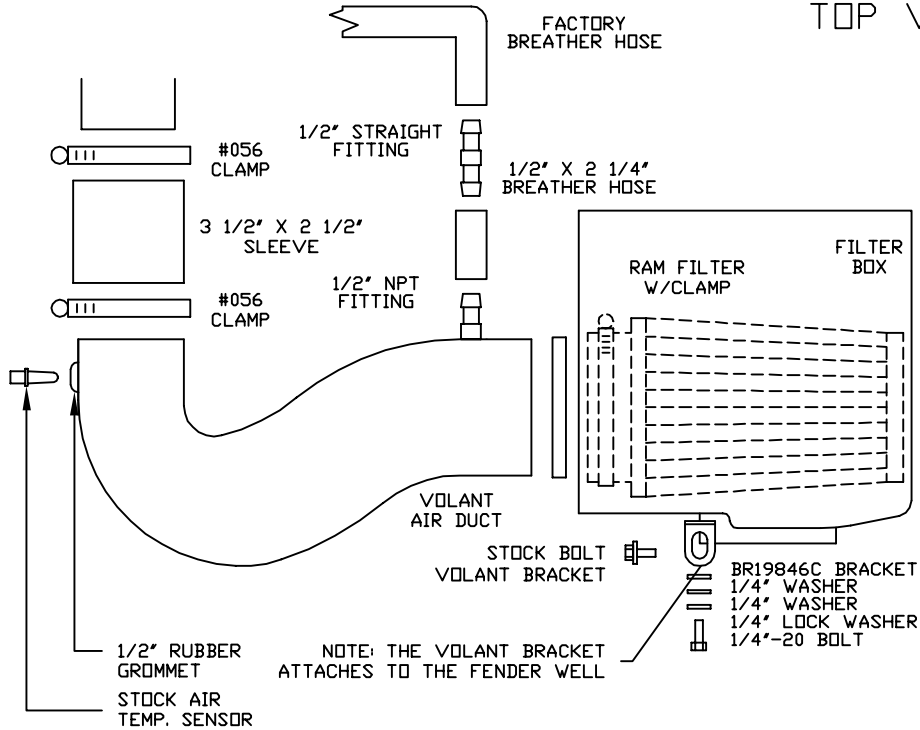


VOLANT COOL AIR INTAKES
 PART NO.: 16857154
 INSTALLATION INSTRUCTIONS

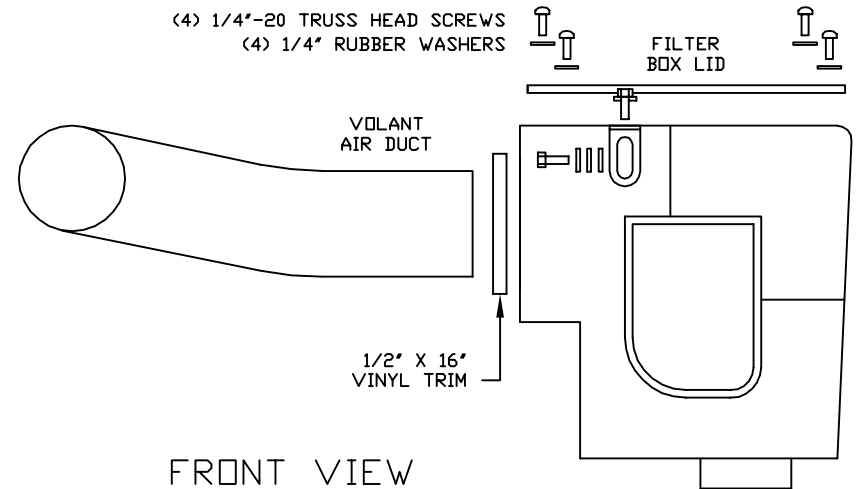
16857154 PARTS LIST

1	VOLANT FILTER BOX	2	1/4" WASHERS	1	1/2" X 2 1/4" BREATHER HOSE
1	VOLANT FILTER BOX LID	1	1/4" LOCK WASHERS	1	1/2" RUBBER GROMMET
1	VOLANT AIR DUCT	4	1/4"-20 TRUSS HEAD SCREWS	1	1/2" X 16" VINYL TRIM
1	RAM FILTER W/CLAMP	4	1/4" RUBBER WASHERS		
2	#056 CLAMPS	1	BR19846C BRACKET (SHORT)		
1	3 1/2" X 2 1/2" SLEEVE	1	1/2" STRAIGHT FITTING		
1	1/4"-20 BOLTS	1	1/2" NPT FITTING		

TOP VIEW



(4) 1/4"-20 TRUSS HEAD SCREWS
 (4) 1/4" RUBBER WASHERS



FRONT VIEW

#048 CLAMP

3" X 2" SLEEVE

#048 CLAMP

ACCESSORY RAM AIR SCOOP



FILTER BOX LID





**READ INSTRUCTIONS THOROUGHLY BEFORE DISASSEMBLING.
DO NOT SKIP ANY STEPS.**

INSTALLATION INSTRUCTIONS PART NO. 16857154

Installation Instructions:

1. Disconnect negative battery cable.
2. Remove the engine cover by pulling up.
3. Pull stock breather hose located out of the factory box.
4. Remove the factory 10mm bolt holding the box down located on the core support.
5. Remove the air temp sensor by gently pulling STRAIGHT out.
6. Loosen the factory clamp holding on the factory air duct onto throttle body by using a 5/16 socket or nut driver or flathead screwdriver.
7. Remove the factory box and duct.
8. Remove the rubber grommet from the bottom of the factory box.
9. Prior to installing Volant box put the Volant fitting inside of the factory rubber grommet and install on the Volant box by pressing the grommet through hole in box.
10. Prior to installing Volant box install the smaller L bracket to the Volant box using a ¼ lock washer ¼ washer and a 12mm bolt.
11. Place Volant box in factory position and tighten down box with the factory 10mm bolt.
12. Place the 5/8 straight fitting into the Volant duct, than the Volant 5/8 sleeve than the Volant 5/8 fitting.
13. Place the 3 ½ X 2 ½" sleeve on the Volant duct and tighten with a #56 clamp using a 5/16 socket or nut driver or flathead screwdriver.
14. Press the Volant trim sponge around the hole in the box and clamp the filter to the Volant duct using a 5/16 socket or nut driver or flathead screwdriver.
15. Place the open end of the 3 ½ X 2 ½ sleeve onto throttle body and tighten the #56 clamp using a 5/16 socket or nut driver or flathead screwdriver.
16. Place the factory breather hose onto the Volant ½ hose fitting.
17. Place the stock air temp sensor into the ½ rubber grommet on the Volant duct.
18. Re-install the factory engine cover by pressing down on factory mounts.
19. Reinstall the negative battery cable.

WARNING: OVER TIGHTENING HARDWARE MAY ALTAR THE INTEGRITY OF THE VOLANT AIR INTAKE SYSTEM.

BEFORE ROAD TESTING

1. Start engine, leaving the transmission in park and securing the parking brake.
2. Make sure to look and listen for any unusual noises or air leaks. Repair problems if needed.
3. Once completed it will be necessary to check periodically for realignment and tightening of all connections.
4. Once all tests are completed, enjoy the performance of your new Air Intake System.

CARE AND CLEANING

Check the cotton reusable filter periodically and remove any excessive dirt build-up by tapping the filter on the ground and brushing off the loosened dirt. Clean the filter by using Volant's Filter Recharger Kit. Volant's Filter Recharger Kit is designed to restore original air flow. Re-oil every 10,000 miles without cleaning to improve filtering in sand and dirt. Clean only when dirt is very excessive or 50,000 miles.

RECOMMENDED SERVICE PARTS

RECOMMENDED SERVICE PARTS	PART NO.
REPLACEMENT FILTER	5122
PREFILTER	51902
CLEANING KIT	5100

APPLICATION GUIDE

MY	MAKE	MODEL	ENG.
04-09	DODGE	CHALLENGER	5.7L

INSTALL

