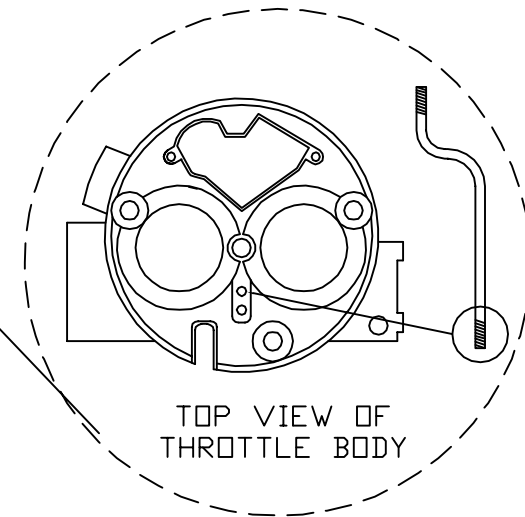
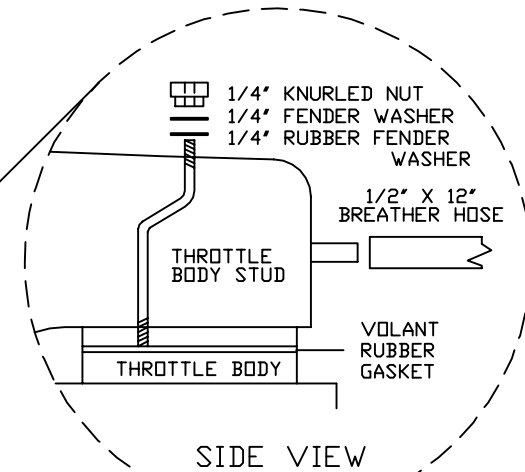
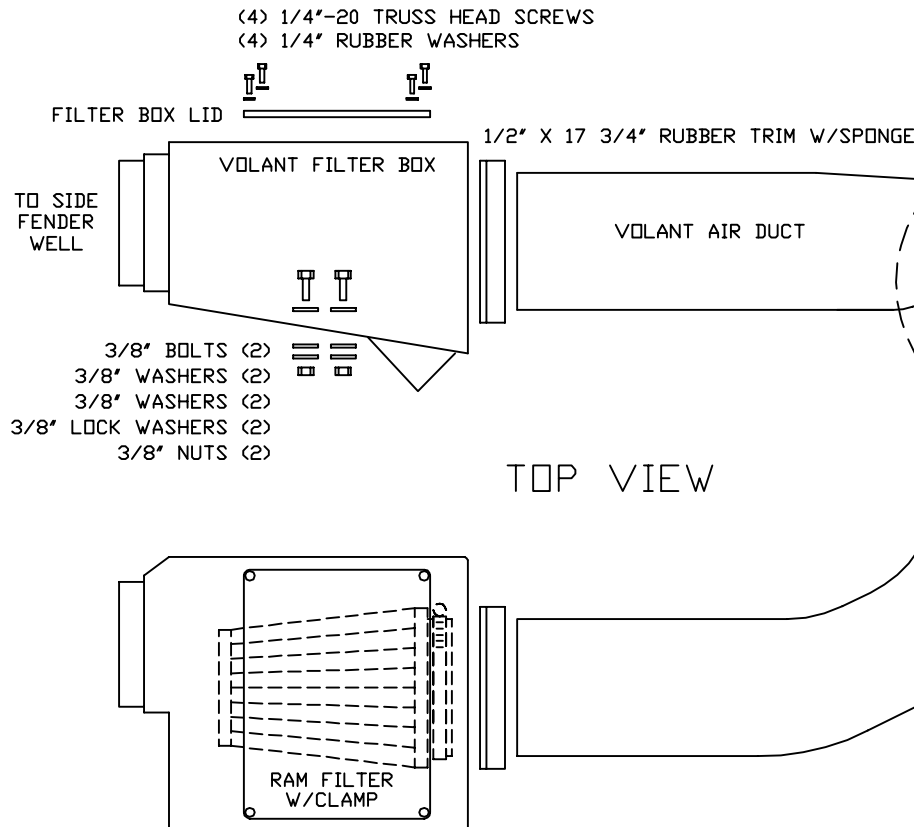


VOLANT COOL AIR INTAKES
 PART NO.: 15857
 INSTALLATION INSTRUCTIONS

15857 PARTS LIST

1	FILTER BOX	1	VOLANT RUBBER GASKET	1	1/2" X 12" VOLANT HOSE
1	FILTER BOX LID	4	3/8" WASHERS	4	1/4"-20 TRUSS HEAD SCREWS
1	VOLANT AIR DUCT	1	1/4" FENDER WASHER	4	1/4" RUBBER WASHERS
1	RAM FILTER W/CLAMP	1	1/4" RUBBER FENDER WASHER		
2	3/8" BOLTS	1	1/4" KNURLED NUT		
2	3/8" NUT	1	THROTTLE BODY STUD		
2	3/8" LOCK WASHERS	1	1/2" X 17 3/4" VINYL TRIM		





**READ INSTRUCTIONS THOROUGHLY BEFORE DISASSEMBLING.
DO NOT SKIP ANY STEPS.**

INSTALLATION INSTRUCTIONS PART NO. 15857

Installation Instructions:

- Loosen and remove the wing nut on the air cleaner housing and remove lid.
- Remove the air cleaner bottom half from the vehicle. Some models have an air injector check valve, which is connected to the air cleaner. Remove the hose and clamp.
- Loosen the two bolts from underneath the passenger side front fender well that hold the stock resonator down. Once loosen remove the resonator from the vehicle.
- Disconnect the breather hose from the throttle body spacer and remove the stock throttle body spacer and stock breather hose from the valve cover. Remove the gasket from the throttle body and install the Volant rubber gasket.
- Vehicles manufactured between 92-95: Remove the two factory studs from the throttle body with a 8 MM open wrench.
- Vehicles manufactured between 88-91: Remove the throttle body stud. Install the Volant throttle body stud to the throttle body.
- Install the 1/2" X 17 3/4" vinyl trim w/sponge to the 6" round hole on the Volant filter box.
- Install the Volant filter box in the same location where the stock resonator box was located. Use the same two holes in the fender well to fasten the Volant filter box down using the 3/8" bolts, 3/8" washers, 3/8" lock washers and 3/8" nuts provided.
- Install the Volant air intake duct by inserting the duct thru the 6" inch hole in the Volant filter box. Then place the throttle body stud thru the top off the Volant duct.
- Use the 1/4" knurled nut, 1/4" fender washer and 1/4" rubber fender washer to fasten the Volant duct down to the throttle body.
- Make sure the Volant filter box is tighten before installing the Volant 5" high flow ram filter to the Volant duct in the filter box.
- Install the Volant filter box lid to the filter box using the four (4) 1/4" truss head screws and rubber washers.
- Connect the Volant 1/2" x 12" breather hose to the Volant duct and the valve cover.
- Reattach the negative battery cable.

WARNING: OVER TIGHTENING HARDWARE MAY ALTAR THE INTEGRITY OF THE VOLANT AIR INTAKE SYSTEM.

BEFORE ROAD TESTING

- Start engine, leaving the transmission in park and securing the parking brake.
- Make sure to look and listen for any unusual noises or air leaks. Repair problems if needed.
- Once completed it will be necessary to check periodically for realignment and tightening of all connections.
- Once all tests are completed, enjoy the performance of your new Air Intake System.

CARE AND CLEANING

Check the cotton reusable filter periodically and remove any excessive dirt build-up by tapping the filter on the ground and brushing off the loosened dirt. Clean the filter by using Volant's Filter Recharger Kit. Volant's Filter Recharger Kit is designed to restore original air flow. Re-oil every 10,000 miles without cleaning to improve filtering in sand and dirt. Clean only when dirt is very excessive or 50,000 miles.

RECOMMENDED SERVICE PARTS

RECOMMENDED SERVICE PARTS	PART NO.
REPLACEMENT FILTER	5117
PREFILTER	51902
CLEANING KIT	5100

APPLICATION GUIDE

MY	MAKE	MODEL	ENG.
91-95	CHEVROLET	BLAZER	5.7L
88-95	CHEVROLET	SILVERADO	5.7L
92-95	CHEVROLET	SUBURBAN	5.7L
88-95	GMC	CHEYENNE	5.7L
88-95	GMC	SIERRA	5.7L
92-95	GMC	YUKON	5.7L

INSTALL

