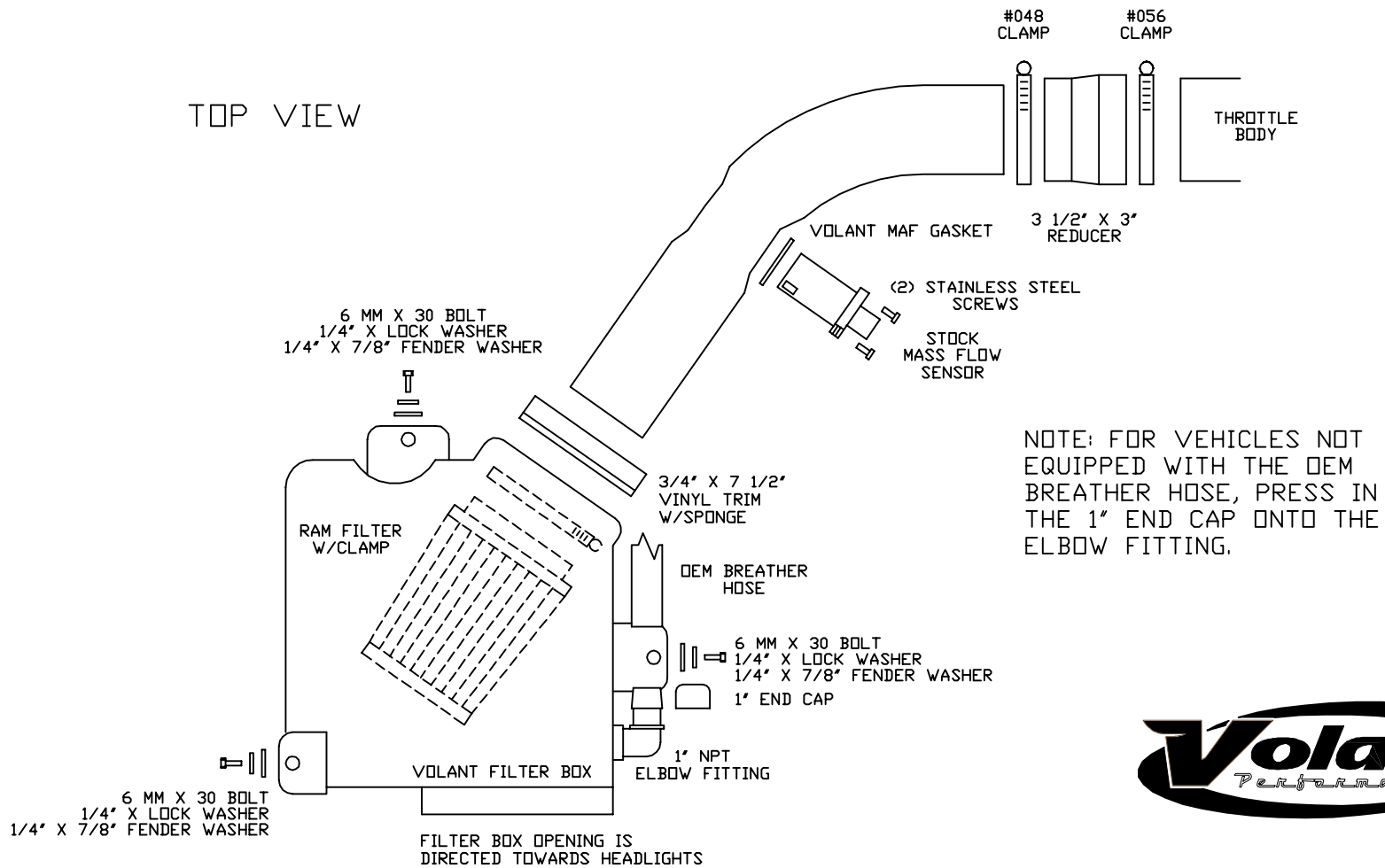


VOLANT COOL AIR INTAKES  
 PART NO.: 15742  
 INSTALLATION INSTRUCTIONS

15742 PARTS LIST

1	VOLANT FILTER BOX	3	6 MM X 30 BOLT
1	VOLANT AIR DUCT	3	1/4" X LOCK WASHER
1	RAM FILTER W/CLAMP	3	1/4" X 7/8" FENDER WASHER
1	#048 CLAMP	1	3/4" X 7 1/2" VINYL TRIM W/SPONGE
1	#056 CLAMP	1	1" NPT ELBOW FITTING
1	3 1/2" X 3" REDUCER	1	1" END CAP
1	VOLANT GASKET	2	STAINLESS STEEL SCREWS

TOP VIEW





**READ INSTRUCTIONS THOROUGHLY BEFORE DISASSEMBLING.  
DO NOT SKIP ANY STEPS.**

**INSTALLATION INSTRUCTIONS PART NO. 15742**

**Installation Instructions:**

1. Disconnect the negative battery cable.
2. Remove the two screws holding the MAF sensor into place.
3. Pull the pump hose off of the factory fitting by pulling straight back.
4. Remove the screws holding the air box down and loosen the clamp holding the duct onto the throttle body.
5. Remove the air duct and air box.
6. Attach the 3.5 to 3 reducer to the throttle body and tighten the #56 clamp.
7. Attach the volant filter to the duct and press the duct into the reducer, position the filter and tighten the clamps
8. Press the 7.5 trim onto the volant box
9. Place the volant box into factory position and tighten with the hardware provided.
10. Remove the MAF gasket and replace it with the volant MAF gasket, place the MAF into the duct and tighten with the hardware provided.
11. Press the pump hose onto the 1" elbow fitting on the volant box, if your trailblazer does not have this hose place the end cap onto the fitting.
12. Reattach the negative battery cable.

**WARNING: OVER TIGHTENING HARDWARE MAY ALTAR THE INTEGRITY OF THE VOLANT AIR INTAKE SYSTEM.**

**BEFORE ROAD TESTING**

1. Start engine, leaving the transmission in park and securing the parking brake.
2. Make sure to look and listen for any unusual noises or air leaks. Repair problems if needed.
3. Once completed it will be necessary to check periodically for realignment and tightening of all connections.
4. Once all tests are completed, enjoy the performance of your new Air Intake System.

**CARE AND CLEANING**

Check the cotton reusable filter periodically and remove any excessive dirt build-up by tapping the filter on the ground and brushing off the loosened dirt. Clean the filter by using Volant's Filter Recharger Kit. Volant's Filter Recharger Kit is designed to restore original air flow. Re-oil every 10,000 miles without cleaning to improve filtering in sand and dirt. Clean only when dirt is very excessive or 50,000 miles.

**RECOMMENDED SERVICE PARTS**

RECOMMENDED SERVICE PARTS	PART NO.
REPLACEMENT FILTER	5113
PREFILTER	51901
CLEANING KIT	5100

**APPLICATION GUIDE**

MY	MAKE	MODEL	ENG.
06-08	CHEVROLET	TRAILBLAZER	4.2L
06-08	GMC	ENVOY	4.2L

**INSTALL**

