



TIRE REPAIR KIT

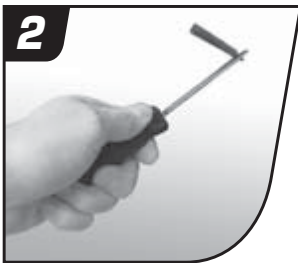
NOTICE: *For the temporary repair of tubeless tire punctures.* The general industry standard recommends a combination plug and inner liner patch to be considered a permanent repair. Please see a tire repair professional as soon as possible.

WARNING: This product contains chemicals, including lead, known to the State of California to cause cancer, birth defects or other reproductive harm. *Wash hands after handling.*



Instructions

1. Remove object that caused puncture.
 2. Remove repair plug from package and insert into eye of needle tool. Center plug within eye opening. If you have difficulty inserting plug into eye it may be opened up slightly with a flat blade screwdriver.
 3. Insert needle with repair plug into hole until plug is pushed in approximately 2/3 of the way. Pull needle straight out, without twisting, in a rapid motion.
 4. Cut off excess plug material flush with tread of tire. Inflate tire to manufacturer's recommended pressure.
- * Cement may be used to aid in installation and ultimate adhesion.



DANGER: EXTREMELY FLAMMABLE – CONTAINS HEPTANE & TOLUENE. Do not use near heat or flame. Vapor harmful, do not inhale or swallow. Avoid contact with eyes and skin. For eye contact, flush with water for 15 minutes. For skin contact, wash thoroughly with soap and water. If swallowed, do not induce vomiting and get immediate medical attention. **KEEP OUT OF REACH OF CHILDREN.**