

TURBO FLANGES

Vibrant Performance offers a large assortment of Turbo Inlet and Discharge Flanges, Compressor Outlet Flanges, External Wastegate Flanges, Oil Feed and Oil Drain Flanges. Multi-layer metal gaskets are available for some of our flanges.

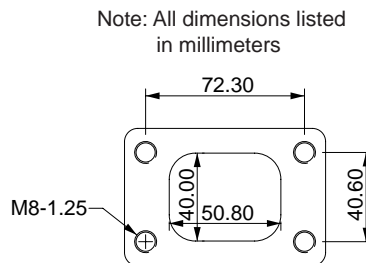
TURBO INLET FLANGES



T25 / T28 / GT25 Inlet Flange

- Also fits T2, GT28, GT25/40R
- 1/2" thick
- Tapped holes (M8 x 1.25)

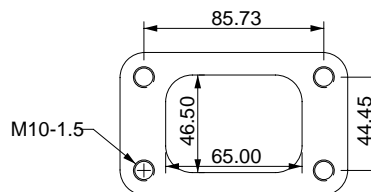
T304SS Part No.	Mild Steel Part No.	Matching Gasket Part No.
1430	14300	1430G



T3 and T3/T4 Inlet Flange

- Also fits KKK K26/K27/K28 Turbos
- 1/2" thick
- Tapped holes (M10 x 1.5)

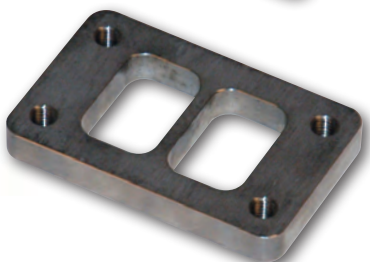
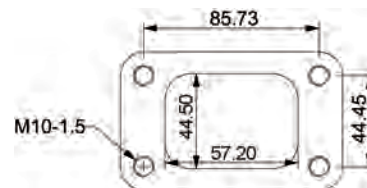
T304SS Part No.	Mild Steel Part No.	Matching Gasket Part No.
1431	14310	1431G



GT30R/GT35R/GT40R Inlet Flange

- Designed to fit all Garrett T3 housings
- 1/2" thick
- Tapped holes (M10 x 1.5)

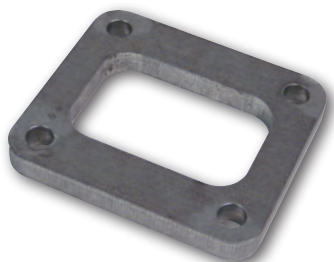
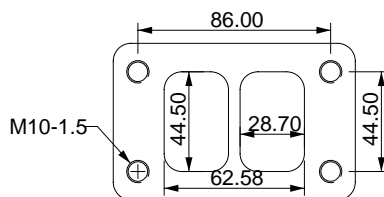
T304SS Part No.	Mild Steel Part No.	Matching Gasket Part No.
1400	14000	1400G



T03 Inlet Flange - Divided

- 1/2" thick
- Tapped holes (M10 x 1.5)

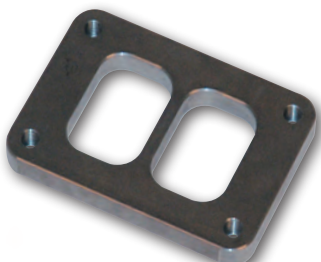
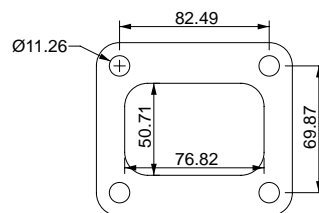
T304SS Part No.	Mild Steel Part No.	Matching Gasket Part No.
1445	14450	1445G



T04 Inlet Flange

- 1/2" thick
- Drilled holes

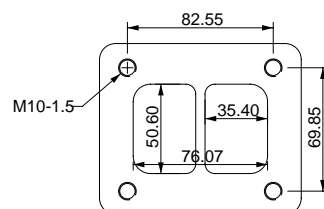
T304SS Part No.	Mild Steel Part No.	Matching Gasket Part No.
1441	14410	1441G



T04 Inlet Flange - Divided

- 1/2" thick
- Tapped holes (M10 x 1.5)

T304SS Part No.	Mild Steel Part No.	Matching Gasket Part No.
1442	14420	1442G

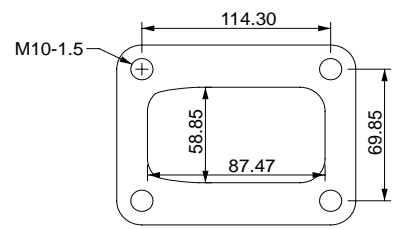




T06 Inlet Flange

- 1/2" thick
- Tapped holes (M10 x 1.5)

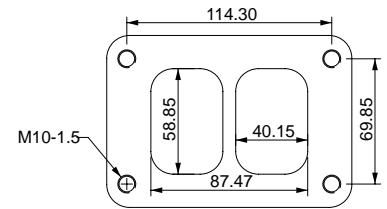
T304SS Part No.	Mild Steel Part No.	Matching Gasket Part No.
1417	14170	1417G



T06 Inlet Flange - Divided

- 1/2" thick
- Tapped holes (M10 x 1.5)

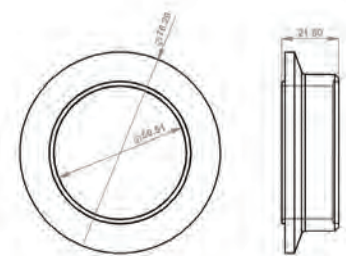
T304SS Part No.	Mild Steel Part No.	Matching Gasket Part No.
1443	14430	1443G



Tial GT28/GT30/GT35 Turbine Housing Inlet Flange

- V-Band Style Flange

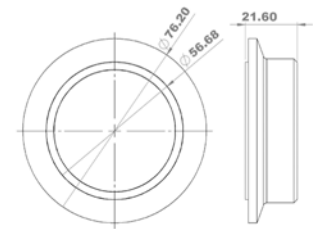
T304SS Part No.	Mild Steel Part No.	Matching V-Band Clamp Part No.
1416	N/A	1416C



Precision Turbo 2" V-Band Inlet Flange

- Fits many Precision CEA 5-series and 6-series turbochargers equipped with V-Band inlet on turbine housing.

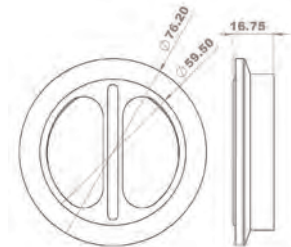
T304SS Part No.	Mild Steel Part No.	Matching V-Band Clamp Part No.
1418	N/A	1416C



Garrett GT30 and GT35 Turbine Housing Inlet Flange - Divided / Twin Scroll

- V-Band Style Flange

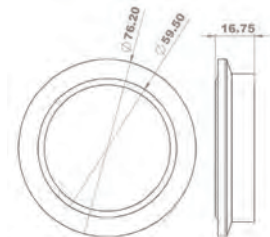
T304SS Part No.	Mild Steel Part No.	Matching V-Band Clamp Part No.
1391	N/A	1416C



Garrett GT30 and GT35 Turbine Housing Inlet Flange

- V-Band Style Flange

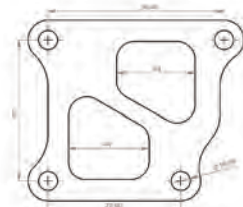
T304SS Part No.	Mild Steel Part No.	Matching V-Band Clamp Part No.
1390	N/A	1416C



Mitsubishi EVO 7.8.9 and X Inlet Flange

- 1/2" thick
- Drilled holes

T304SS Part No.	Mild Steel Part No.	Matching Gasket Part No.
N/A	14020	N/A



EXTERNAL WASTEGATE FLANGES

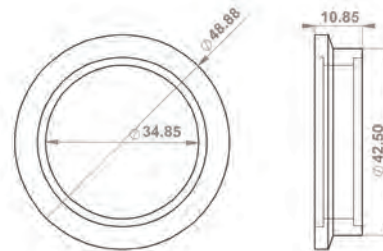
Note: All dimensions listed in millimeters



Tial MV-S Wastegate Outlet Flange

- Also fits Turbosmart Ultragate 40
- V-Band Style

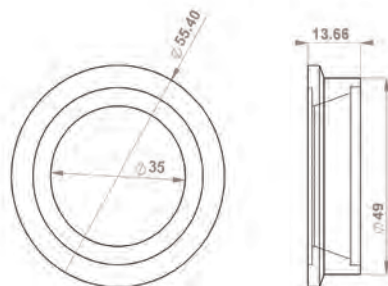
T304SS Part No.	Mild Steel Part No.	Matching V-Band Clamp Part No.
1426	N/A	N/A



Tial MV-S Wastegate Inlet Flange

- Also fits Turbosmart Ultragate 40
- V-Band Style.

T304SS Part No.	Mild Steel Part No.	Matching V-Band Clamp Part No.
1424	N/A	N/A



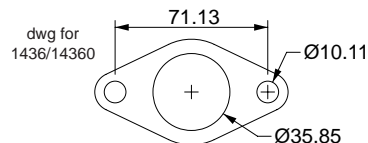
Tial, Deltagate, Evolution and Turbosmart 35-38mm External Wastegate Flange

- 3/8" thick to prevent warping due to high heat.
- Available with Tapped Holes for Wastegate Inlet and Drilled holes for Dump Tube applications.



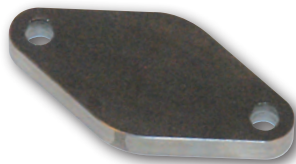
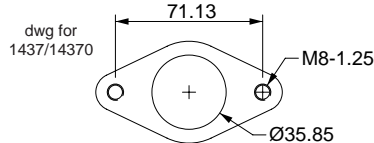
Flange with Drilled Holes

T304SS Part No.	Mild Steel Part No.	Matching Gasket Part No.
1436	14360	1436G



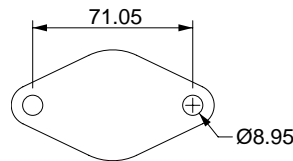
Flange with Tapped Holes

T304SS Part No.	Mild Steel Part No.	Matching Gasket Part No.
1437	14370	1436G



35-38mm External Wastegate Block Off Flange

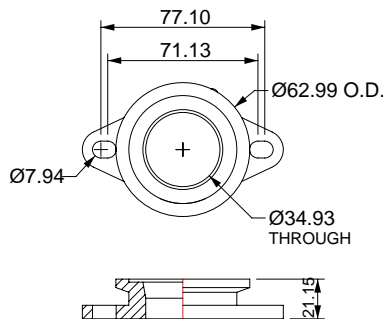
T304SS Part No.	Mild Steel Part No.	Matching Gasket Part No.
N/A	14290	1436G



38mm to 44mm Wastegate Adapter Flange

- This adapter makes it easy to upgrade from a Tial 2 bolt 35-38mm WG to a Tial 44mm WG without cutting off the existing 2-bolt flange.
- Compatible with V-Band Clamp supplied with Tial 44mm WG

T304SS Part No.	Mild Steel Part No.	Matching Gasket Part No.
1427	N/A	1436G

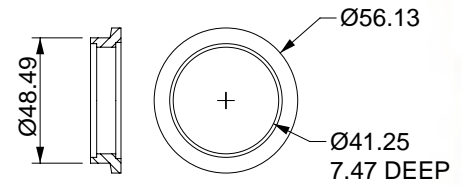




Tial V44 and MV-R Wastegate Outlet Flange

- V-Band Style

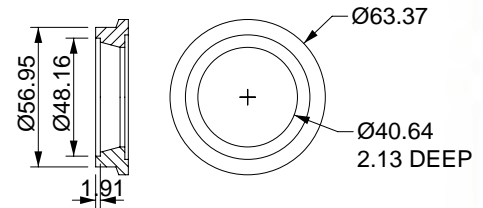
T304SS Part No.	Mild Steel Part No.	Matching V-Band Clamp Part No.
1410A	N/A	N/A



Tial V44 and MV-R Wastegate Inlet Flange

- V-Band Style

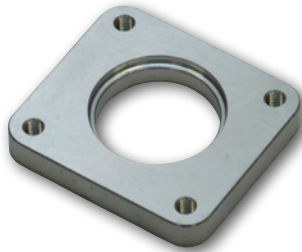
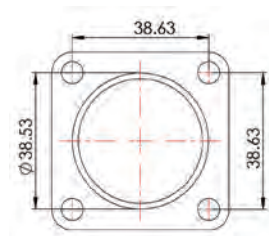
T304SS Part No.	Mild Steel Part No.	Matching V-Band Clamp Part No.
1411A	N/A	N/A



Tial 41mm Wastegate Outlet Flange

- This flange can also be used with Tial 40mm Wastegates

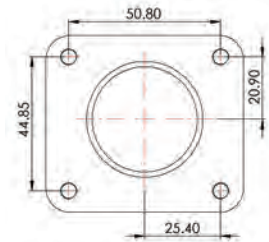
T304SS Part No.	Mild Steel Part No.	Matching Gasket Part No.
1412	N/A	N/A



Tial 41mm Wastegate Inlet Flange

- Tapped Holes (12-24NC)

T304SS Part No.	Mild Steel Part No.	Matching Gasket Part No.
1413	N/A	N/A



Wastegate Flange Kit for 40mm Synapse Synchronic Wastegate

- Includes both inlet and outlet flanges, 4 S.S. studs and 4 nuts

T304SS Part No.	Mild Steel Part No.	Matching Gasket Part No.
17001	N/A	N/A

STAINLESS STEEL FLEXIBLE INTERLOCK HOSE (FOR DUMP TUBE USE)

Stainless Steel Interlock Hose provides extra flexibility when fabricating a Wastegate Dump Tube in tight areas.

Part No.	Description
84027	1-1/2" I.D. (38mm) x 20" long S.S. Interlock Hose



TURBO DISCHARGE (DOWNPIPE) FLANGES

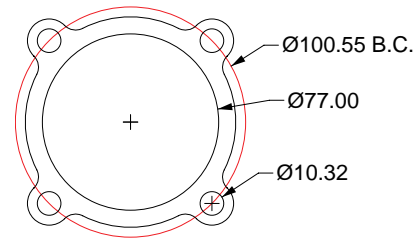
Note: All dimensions listed in millimeters



GT series / T3 Discharge Flange, 4 Bolt (3" Inlet I.D.)

- Use with new generation GT housings with 3" ID outlet
- 1/2" thick

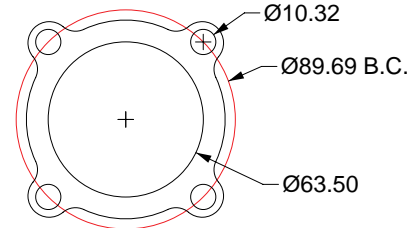
T304SS Part No.	Mild Steel Part No.	Matching Gasket Part No.
1438	14380	1438G



GT series / T3 Discharge Flange, 4 Bolt (2.5" Inlet I.D.)

- Use with smaller T3 and GT housings with 2.5" ID outlet
- 1/2" thick

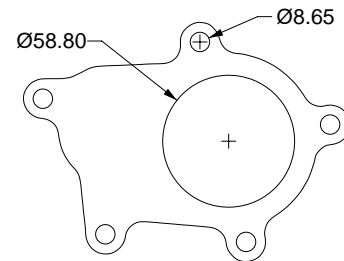
T304SS Part No.	Mild Steel Part No.	Matching Gasket Part No.
1439	14390	1439G



T3 Discharge Flange, 5 Bolt (for External Wastegate)

- 1/2" thick

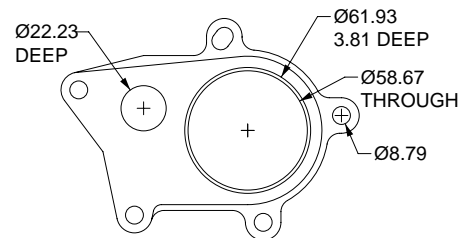
T304SS Part No.	Mild Steel Part No.	Matching Gasket Part No.
1433	14330	N/A



Generation 2 T3 Discharge Flange, 5 Bolt with Divorced Ports Option

- A 7/8" I.D. hole is partially machined to allow for optional divorced ports.
- Designed to work with our transition adapter flange (Part #1447) to simplify fabrication of custom 3" O.D. Downpipes.
- 1/2" thick

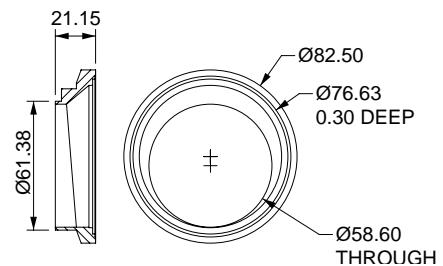
T304SS Part No.	Mild Steel Part No.	Matching Gasket Part No.
N/A	14460	N/A



Transition Adapter Flange for Generation 2 T3 Discharge Flange

- This flange makes it easier to fabricate custom 3" Downpipes for T3 Turbos with 5-bolt discharge.
- Flange outlet is designed for easy welding of either 3" O.D. Tubing or 3" O.D. Schedule 10 Elbow.
- Features unique offset to allow flange to be rotated for optimum clearance of potential obstructions.

T304SS Part No.	Mild Steel Part No.	Matching Gasket Part No.
N/A	14470	N/A

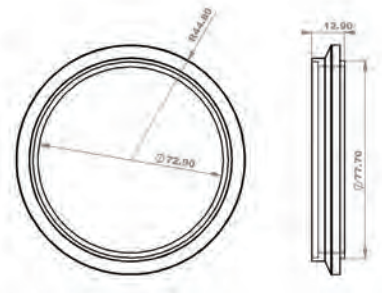




Discharge Flange for Tial GT28, GT30 and GT35 Turbine housings

- Also fits most Garrett medium frame turbine housings with V-band outlet
- V-Band style

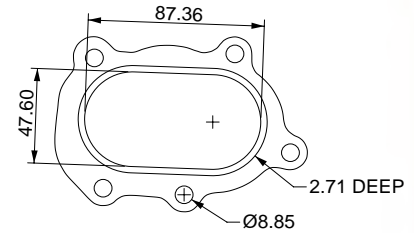
T304SS Part No.	Mild Steel Part No.	Matching V-Band Clamp Part No.
1415	N/A	1415C



GT25R / GT28R Discharge Flange, 5 Bolt

- Features machined lip for easy welding of oval tubing
- 1/2" thick

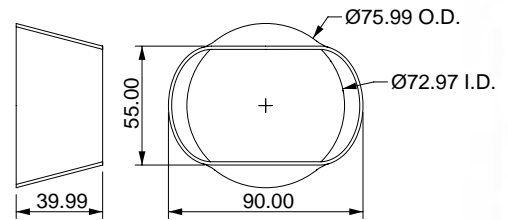
T304SS Part No.	Mild Steel Part No.	Matching Gasket Part No.
1448	14480	N/A



Oval to Round Transition Adapter for GT25 / GT28 Discharge Flange

- Quickly Transitions from 90mm x 55mm Oval to 76mm (3") Round
- Use with Vibrant Part #1448 or #14480

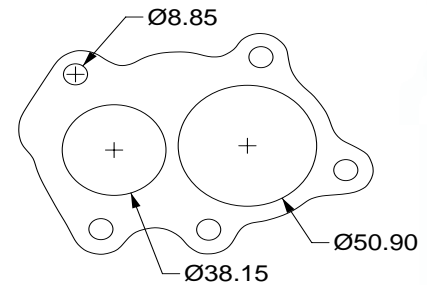
T304SS Part No.	Mild Steel Part No.	Matching Gasket Part No.
1448A	N/A	N/A



GT25R / GT28R Discharge Flange, 5 Bolt with Divorced Ports

- 1/2" thick

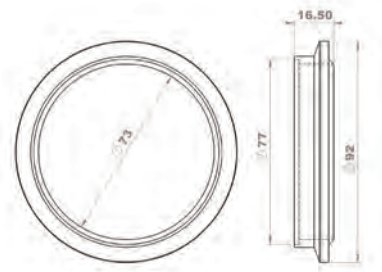
T304SS Part No.	Mild Steel Part No.	Matching Gasket Part No.
1449	14490	N/A



Borg Warner EFR Discharge Flange

- Fits all BW T25, T3 and T4 based turbine housings
- V-Band style

T304SS Part No.	Mild Steel Part No.	Matching V-Band Clamp Part No.
14901	N/A	N/A



TURBO DISCHARGE FLANGES (CONTINUED)

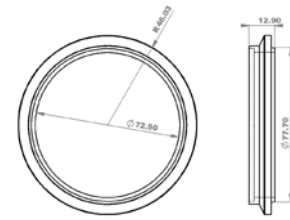


Precision Turbo 3" V-Band Discharge Flange

- Fits many Precision CEA 5-series and 6-series turbochargers equipped with V-Band outlet on turbine housing.

T304SS Part No.	Mild Steel Part No.	Matching V-Band Clamp Part No.
1419	N/A	1415C

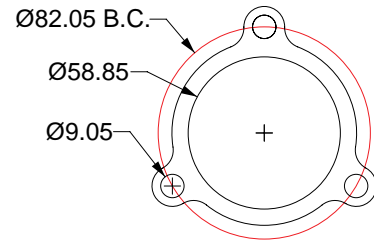
Note: All dimensions listed in millimeters



T3 Discharge Flange, 3 Bolt

- For use on Internally Wastegated T3 Turbos
- 1/2" thick

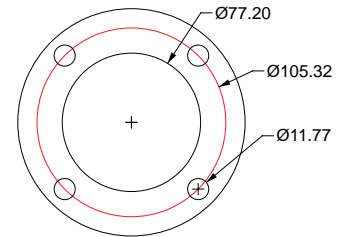
T304SS Part No.	Mild Steel Part No.	Matching Gasket Part No.
N/A	14340	N/A



T04 Oncenter Discharge Flange, 4 Bolt

- 1/2" thick

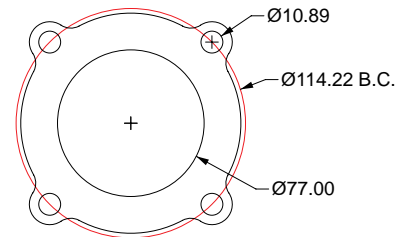
T304SS Part No.	Mild Steel Part No.	Matching Gasket Part No.
N/A	14350	N/A



VW 1.8T Discharge Flange

- Bolts to K03/K04 OE Turbo on FWD VW Golf / Jetta / Beetle 1.8T
- 1/2" Thick

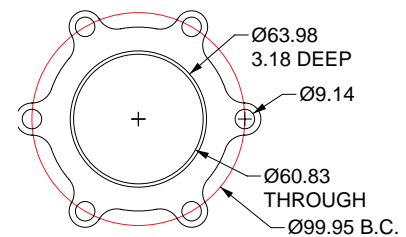
T304SS Part No.	Mild Steel Part No.	Matching Gasket Part No.
N/A	14440	1444G



GT32 Discharge Flange, 6 Bolt

- Suitable for use on internally and externally wastegated versions of GT32 Turbo.
- 1/2" thick

T304SS Part No.	Mild Steel Part No.	Matching Gasket Part No.
N/A	14200	1420G

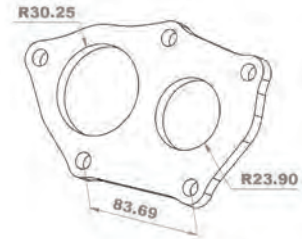




Mitsubishi EVO 7,8,9 and X Discharge Flange

- 1/2" thick

T304SS Part No.	Mild Steel Part No.	Matching Gasket Part No.
N/A	13960	N/A



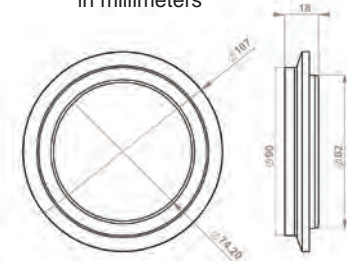
TURBO COMPRESSOR FLANGES



GT42 Compressor Outlet Flange

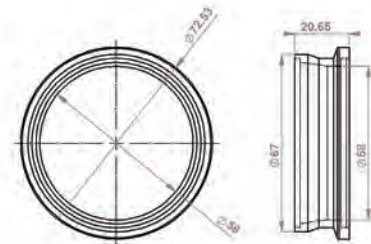
T304SS Part No.	T6061 Aluminum Part No.	Matching V-Band Clamp Part No.
14943	14942	14942C

Note: All dimensions listed in millimeters



Borg Warner EFR Compressor Outlet Flange

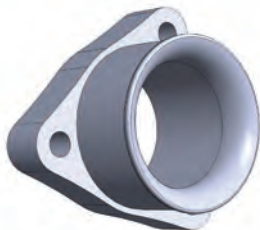
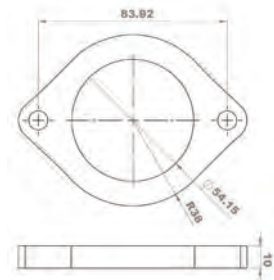
T304SS Part No.	T6061 Aluminum Part No.	Matching V-Band Clamp Part No.
14902	14900	N/A



Nissan SR20 OE Turbo Compressor Inlet Flange

- Fits Many OEM Nissan turbos, including SR20, RB25 and RB26.
- Also fits Garrett GT2554R, GT2560R, GT2854R, GT2859R and GT2860R.

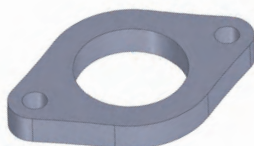
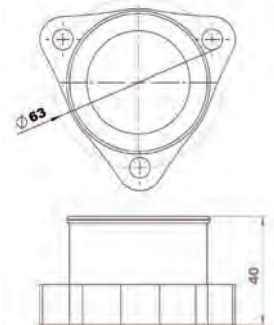
T304SS Part No.	T6061 Aluminum Part No.	Matching Gasket Part No.
14905	14904	N/A



Nissan SR20 OE Turbo Compressor Outlet Flange

- Fits OEM SR20 turbos and Garrett GT2554R, GT2560R, GT2854R.

T304SS Part No.	T6061 Aluminum Part No.	Matching Gasket Part No.
N/A	14906	N/A



Nissan RB25/RB26 OE Turbo Compressor Outlet Flange

- Also fits Garrett GT2859R and GT2860R.

T304SS Part No.	T6061 Aluminum Part No.	Matching Gasket Part No.
14909	14908	N/A

