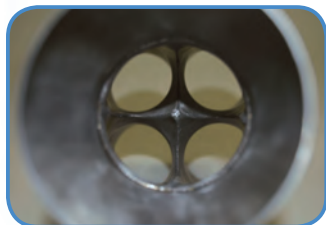


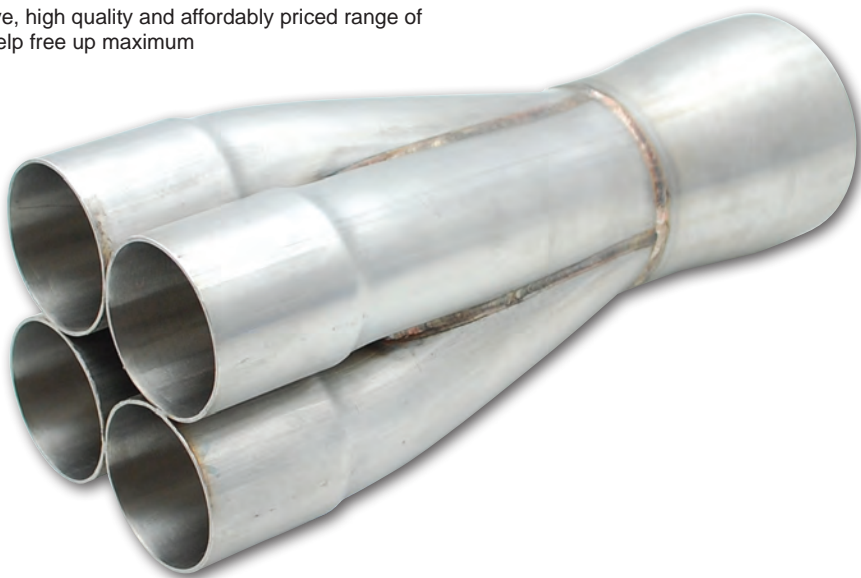
STAINLESS STEEL MERGE COLLECTORS

Vibrant Performance offers a comprehensive, high quality and affordably priced range of T304 Stainless Steel Merge Collectors to help free up maximum horsepower from your exhaust setup.

All Vibrant Performance Merge Collectors feature complete T304 Stainless Steel construction, precise fabrication, top quality TIG welds at every seam and hand porting inside the collector for smooth, unobstructed exhaust flow.

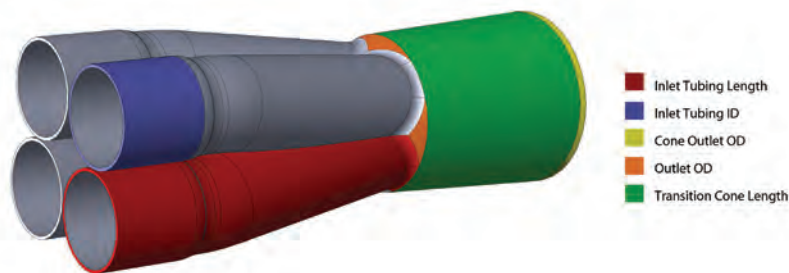


Close up view of inside of a Vibrant Performance Merge Collector.



4 INTO 1 MERGE COLLECTORS

Part No.	Inlet Slipover ID	Inlet Tubing Length	Outlet OD	Transition Cone Length	Cone Outlet OD
10302	1 3/4"	7"	2 1/2"	3 3/4"	3"
10303	1 3/4"	7"	3"	3 3/4"	3 1/2"
10305	1 7/8"	7 1/2"	2 1/2"	3 3/4"	3"
10306	1 7/8"	7 1/2"	3"	3 3/4"	3 1/2"
10307	1 7/8"	7 1/2"	3 1/2"	3 3/4"	4"
10308	2"	7 3/4"	3"	3 3/4"	3 1/2"
10309	2"	7 3/4"	3 1/2"	3 3/4"	4"
10312	2 1/8"	7 1/8"	3 1/2"	4"	4"
10313	2 1/8"	7 1/8"	4"	4"	4 1/2"
10316	2 1/4"	7 3/8"	3 1/2"	4"	4"
10317	2 1/4"	7 3/8"	4"	4"	4 1/2"



HOW DO MERGE COLLECTORS WORK:

In order to maximize torque and horsepower, a vehicle's header and exhaust system must optimize exhaust gas velocity. Anything that reduces exhaust gas speed will negatively impact performance. A header featuring a conventional collector generally suffers from a significant reduction in exhaust gas velocity at the transition from the primaries into the collector. This drop in velocity will decrease volumetric efficiency and reduce scavenging ability. This is key because optimizing volumetric efficiency of an exhaust system allows for improved air/fuel mixture in the combustion chamber, thereby improving an engine's horsepower and torque production potential.

A properly fabricated Merge Collector significantly minimizes the exhaust gas velocity loss at the transition from primary tubes to the collector and as a result, the volumetric efficiency potential of an exhaust system is significantly improved.

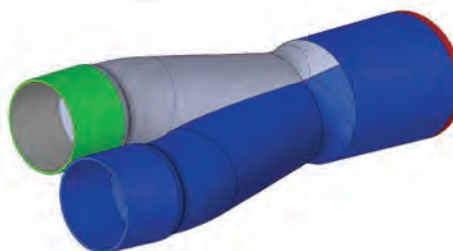
To get maximum benefit from Merge Collectors, dyno testing is crucial to ensure your set up is able to realize its full potential.

2 INTO 1 MERGE COLLECTORS

Vibrant Performance 2 into 1 Merge Collectors are ideal for a variety of custom exhaust fabrication projects, including building X-pipes or creating a slip fit Tri-Y Merge Collector setup. You can expect to pick up some extra horsepower simply by swapping out your car's OEM 2 into 1 transition with one of these Vibrant Y-style Merge Collectors.

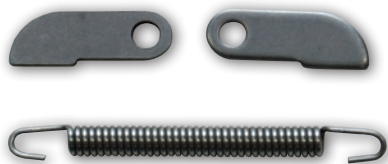
All Vibrant 2 into 1 Merge Collectors are precision manufactured entirely from T304 Stainless Steel and feature top quality TIG welds.

Part No.	Inlet Slipover ID	Outlet OD	A	B
10350	1 1/2"	1 3/4"	5.5"	7"
10351	1 5/8"	2"	5.5"	7"
10352	1 3/4"	2"	5.5"	7"
10353	1 3/4"	2 1/4"	6"	7.5"
10354	1 7/8"	2 1/4"	6.5"	7.5"
10355	2"	2 1/2"	5.5"	8"
10356	2 1/4"	3"	6.75"	8.75"
10357	2 1/2"	2 1/2"	7.75"	9.75"
10358	2 1/2"	3"	6.75"	9"
10359	2 1/2"	3 1/2"	6.5"	9.75"
10360	3"	3"	8.75"	10.75"
10361	3"	3 1/2"	8.5"	10.5"
10362	3"	4"	8"	10"



- Inlet Slipover ID
- Outlet OD
- Inlet Tubing Length "A"
- Overall Length "B"

WELD ON COLLECTOR TAB SET



Spring length is 3 1/2"

Part No.	Description
10340	Set of S.S. collector tabs, (2 tabs, 1 spring)

STAINLESS STEEL DOUBLE SLIP JOINT FITTINGS

- T304 Stainless Steel construction
- Three piece, leak free connection provides lowest possible profile exhaust connection on the market
- Eliminates any ground clearance issues
- Great for making tubular Turbo Manifolds and Dump Tubes as well as being popular for motorcycle exhaust fabrication
- Slip Fit tolerances will tighten after heat cycle and welding

Part No.	Description
13282	For use with 1 1/2" O.D. tubing
13284	For use with 1 3/4" O.D. tubing
13286	For use with 2" O.D. tubing
13290	For use with 2 1/2" O.D. tubing
13292	For use with 3" O.D. tubing

