

# STAINLESS STEEL EXHAUST TIPS

All Vibrant exhaust tips are made of T304 Stainless Steel for optimum corrosion resistance and then go through a three stage polishing process for a brilliant, mirror-like finish.

## ROUND EXHAUST TIPS (WELD-ON)



Part No.	Outlet O.D.	Inlet I.D.	Overall Length
1303	4"	2.25"	7.75"
1304	3.5"	2.25"	7.5"
1305	3"	2"	6.5"

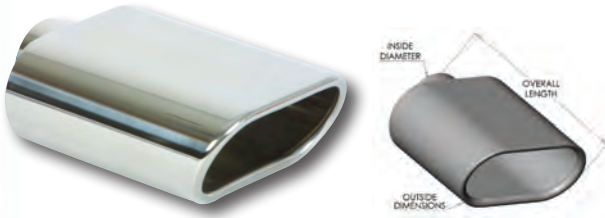
Exhaust Tip Detail: Double Wall, Angle Cut, Rolled



Part No.	Outlet O.D.	Inlet I.D.	Overall Length
1207	4"	2.25"	7.75"
1226	3.5"	2.25"	7.5"
1209	3"	2"	6.5"

Exhaust Tip Detail: Double Wall, Angle Cut, Beveled

## OVAL EXHAUST TIPS (WELD-ON)



Part No.	Outlet Dim.	Inlet I.D.	Overall Length
1405	5.5" x 3"	2.25"	7.75"

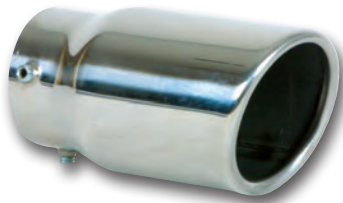
Exhaust Tip Detail: Single Wall, Angle Cut, Rolled



Part No.	Outlet Dim.	Inlet I.D.	Overall Length
1406	4.5" x 3"	2.5"	7.75"

Exhaust Tip Detail: Single Wall, Angle Cut, Rolled

## BOLT-ON EXHAUST TIPS



Part No.	Outlet O.D.	Inlet I.D.	Overall Length
1503	3"	Fits up to 2.25" O.D.	5.5"

Exhaust Tip Detail: Single Wall, Angle Cut, Rolled



Part No.	Outlet Dim.	Inlet I.D.	Overall Length
1504	3.25" x 2.75" (Oval)	Fits up to 2.25" O.D.	5"

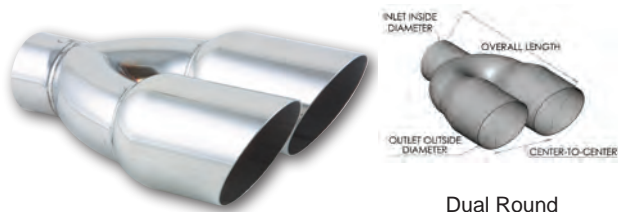
Exhaust Tip Detail: Single Wall, Angle Cut, Rolled



Part No.	Outlet O.D.	Inlet I.D.	Overall Length
1505	2.5"	Fits up to 2" O.D.	5"

Exhaust Tip Detail: Single Wall, Angle Cut, Rolled

## DUAL OUTLET EXHAUST TIPS (WELD-ON)



Dual Round

Part No.	Outlet O.D.	Center to Center	Inlet I.D.	Overall Length
1333	Dual 3.5"	4"	2.5"	10"

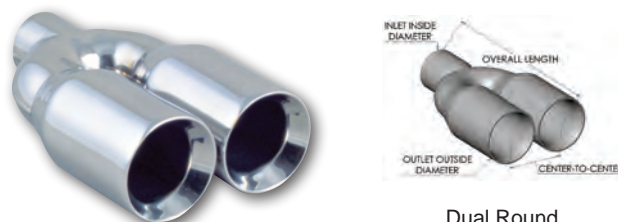
Exhaust Tip Detail: Single Wall, Angle Cut



Dual Round

Part No.	Outlet O.D.	Center to Center	Inlet I.D.	Overall Length
1329	Dual 3.5"	3.75"	2.25"	10"

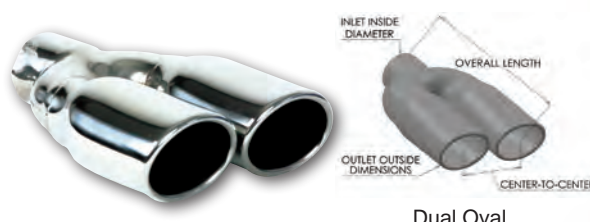
Exhaust Tip Detail: Single Wall, Angle Cut, Rolled



Dual Round

Part No.	Outlet O.D.	Center to Center	Inlet I.D.	Overall Length
1331	Dual 3.5"	3.75"	2.25"	10"

Exhaust Tip Detail: Double Wall, Straight Cut, Beveled



Dual Oval

Part No.	Outlet Dim.	Center to Center	Inlet I.D.	Overall Length
1335	Dual 3.25" x 2.25"	3.65"	2.25"	10"

Exhaust Tip Detail: Single Wall, Angle Cut, Rolled

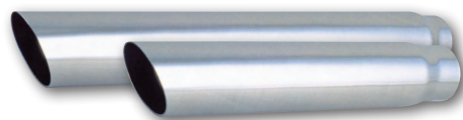
## RECTANGULAR EXHAUST TIPS (WELD-ON)



Exhaust Tip Detail: Single Wall, Camaro Style

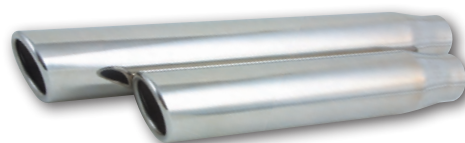
Part No.	Outlet Dim.	Inlet I.D.	Overall Length
1606	7.75" x 2"	2.5"	9.5"
1607	7.75" x 2"	2.25"	9.5"

## TRUCK / SUV EXHAUST TIPS (WELD -ON)



Part No.	Outlet O.D.	Inlet I.D.	Overall Length
1551	3"	2.5"	18"
1559	3"	2.5"	11"
1553	3"	2.25"	18"
1558	3"	2.25"	11"
1554	3.5"	2.5"	20"
1556	3.5"	3"	20"
1561	3.5"	3"	11"
1555	4"	2.5"	20"
1557	4"	3"	20"
1562	5"	4"	11"

Exhaust Tip Detail: Single Wall, 15° Angle Cut



Part No.	Outlet O.D.	Inlet I.D.	Overall Length
1576	3"	2.5"	18"
1575	3"	2.5"	11"
1579	3.5"	2.5"	18"
1578	3.5"	3"	11"
1583	4"	2.5"	18"

Exhaust Tip Detail: Single Wall, 15° Angle Cut, Rolled

