

## ALUMINUM TUBING

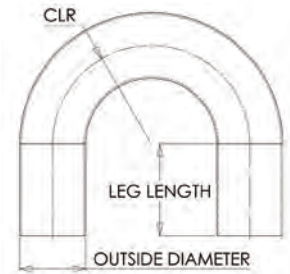
Fabricate your own custom intercooler and intake assemblies using Vibrant Performance Aluminum Tubing. These mirror polished T6061 Aluminum Elbows and Straight Lengths measure 1.5mm thick and are available in sizes ranging from 1 1/2" to 4" O.D.

They require virtually no surface preparation for professional tig welding (see page 65 for our offering of Aluminum TIG Weld Wire). Also works flawlessly with Vibrant's FUSE wire (see pg 6-7).

### 180° ALUMINUM ELBOWS



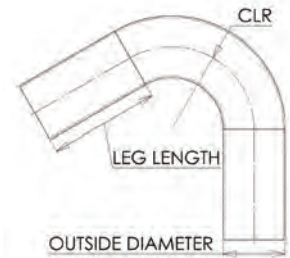
Part No.	Tube O.D.	CLR	Leg Length
2863	1 1/2"	2 1/4"	4"
2864	1 3/4"	2 1/4"	4"
2865	2"	2 1/2"	4"
2867	2 1/2"	3 3/4"	3 1/2"
2868	2 3/4"	4 1/4"	3 1/2"
2869	3"	4 1/2"	2 1/2"



### 120° ALUMINUM ELBOWS



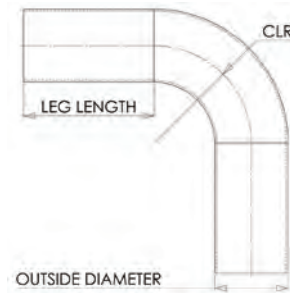
Part No.	Tube O.D.	CLR	Leg Length
2154	1 1/2"	2 1/4"	4"
2155	1 3/4"	2 1/4"	4"
2823	2"	2 1/2"	4"
2824	2 1/4"	3"	4"
2825	2 1/2"	3 3/4"	3"
2826	2 3/4"	4 1/4"	3"
2827	3"	4 1/2"	2 1/2"
2828	3 1/2"	4 3/4"	2 1/2"
2829	4"	6"	2 1/2"



### 90° ALUMINUM ELBOWS



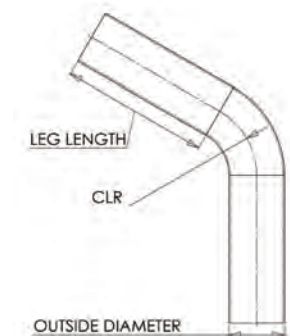
Part No.	Tube O.D.	CLR	Leg Length
2158	1 1/2"	2 1/4"	4"
2159	1 3/4"	2 1/4"	4"
2884	2"	2 1/2"	4 1/2"
2887	2 1/4"	3"	4 1/2"
2178	2 1/2"	3 3/4"	3"
2881	2 3/4"	4 1/4"	3"
2176	3"	4 1/2"	2 1/2"
2891	3 1/2"	4 1/2"	2 1/2"
2876	4"	5"	2 1/2"



### 60° ALUMINUM ELBOWS



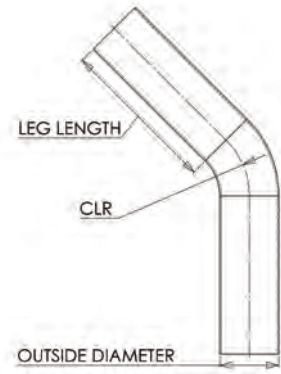
Part No.	Tube O.D.	CLR	Leg Length
2152	1 1/2"	2 1/4"	6"
2153	1 3/4"	2 1/4"	6"
2814	2"	2 1/2"	6"
2816	2 1/4"	3"	6"
2817	2 1/2"	3 3/4"	6"
2818	2 3/4"	4 1/4"	6"
2819	3"	4 1/2"	6"
2821	3 1/2"	4 1/2"	5 1/2"
2822	4"	5"	5 1/2"



## 45° ALUMINUM ELBOWS



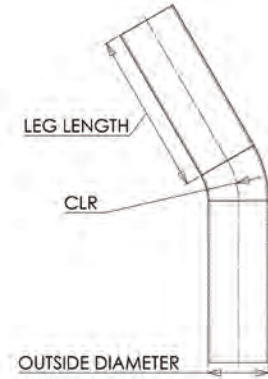
Part No.	Tube O.D.	CLR	Leg Length
2156	1 1/2"	2 1/4"	6"
2157	1 3/4"	2 1/4"	6"
2883	2"	2 1/2"	6"
2886	2 1/4"	3"	6"
2177	2 1/2"	3 3/4"	6"
2880	2 3/4"	4 1/4"	6"
2175	3"	4 1/2"	6"
2890	3 1/2"	4 1/2"	5 1/2"
2875	4"	5"	5 1/2"



## 30° ALUMINUM ELBOWS

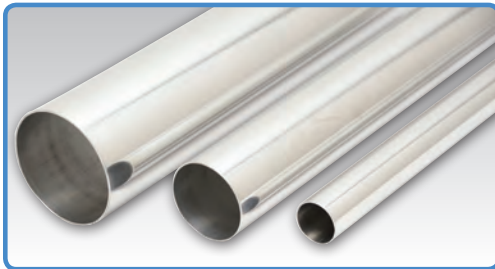


Part No.	Tube O.D.	CLR	Leg Length
2150	1 1/2"	2 1/4"	6 1/2"
2151	1 3/4"	2 1/4"	6 1/2"
2806	2"	2 1/2"	6 1/2"
2807	2 1/4"	3"	6 1/2"
2808	2 1/2"	3 3/4"	6 1/2"
2809	2 3/4"	4 1/4"	6"
2811	3"	4 1/2"	6"
2812	3 1/2"	4 1/2"	5 1/2"
2813	4"	5"	5 1/2"



## ALUMINUM STRAIGHT TUBING

T6061 Aluminum Straight Lengths are available in both 18 inch and 5 foot lengths



Please note: Overall length tolerance = +/- 2"

Tube O.D.	18" Long Part No.	5 foot Long Part No.
1 1/2"	2171	12171
1 3/4"	2172	12172
2"	2885	12885
2 1/4"	2888	12888
2 1/2"	2174	12174
2 3/4"	2882	12882
3"	2173	12173
3 1/2"	2892	12892
4"	2877	12877

## ALUMINUM TRANSITIONS

Vibrant Performance Aluminum Transitions allow for easy and cost effective reducing or expanding from one tubing size to another that will also look very professional. Ideal for applications where the fabricator prefers not to use silicone couplers. Requires minimal if any surface prep for TIG welding.



Part No.	Size	Overall Length
12061	2" x 2 1/2" Transition	3"
12064	2 1/2" x 2 3/4" Transition	3"
12065	2 1/2" x 3" Transition	3"
12067	3" x 3 1/2" Transition	3"
12069	3 1/2" x 4" Transition	3"

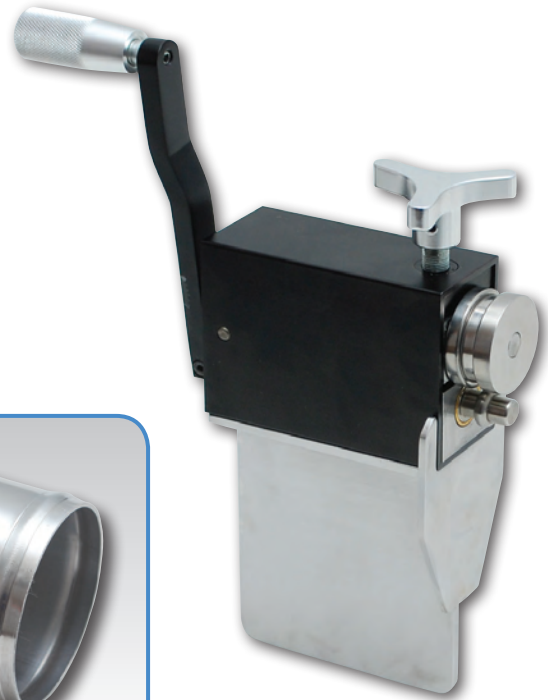
## MANUAL BEAD ROLLER

This sturdy and cost effective tool makes it easy to add a professional looking bead to all types of tubing.

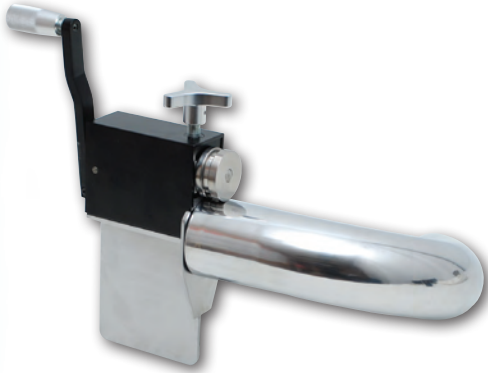
Great for Aluminum up to 16 gauge wall thickness (0.065" or 1.65mm). Steel/Stainless Steel should be no thicker than 18 gauge (0.050" or 1.25mm).

Made from high quality steel and aluminum components, this assembly comes complete with everything you need straight out of the box, including a convenient carrying case. No extra tools are required.

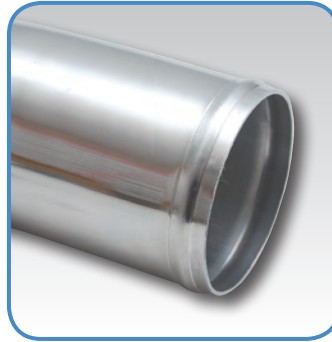
Minimum tube diameter to use on this bead roller is 3/4" OD. It produces a bead that is approximately 2mm tall and 6.5mm wide.



Part No. 2990



Makes bead rolling easy!



Produces a bead that is approx. 2mm tall and 6.5mm wide

## ALUMINUM JOINERS

Our T6061 Aluminum Joiners can come in handy in so many ways. They are especially useful for creating affordable custom silicone coupling combinations to suit your specific needs. Also commonly used for custom intercooler end tank fabrication or for welding hose inlets/outlets to aluminum radiators.



Part No.	Tube O.D.	Overall Length
12049	1 1/2"	3"
12048	1 3/4"	3"
12050	2"	3"
12051	2 1/4"	3"
12052	2 1/2"	3"
12053	2 3/4"	3"
12054	3"	3"
12055	3 1/2"	3"
12056	4"	3"



Create your own custom Silicone Couplers!

## TIGHT RADIUS 90° CAST ALUMINUM ELBOWS



Part No.	Elbow O.D.
2872	2"
2873	2 1/2"
2874	3"

