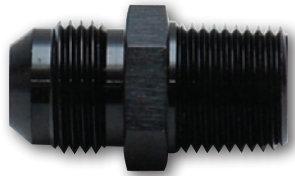


# ADAPTER FITTINGS

Vibrant Performance offers a comprehensive selection of Adapter Fittings to help complete almost any project. These adapters are suitable for use with any manufacturers hose end fitting. **All Aluminum Adapter Fittings are available in Anodized Black only.**

## ALUMINUM STRAIGHT ADAPTER FITTINGS (AN MALE TO NPT)



Aluminum



Steel

Part No.	Size	Material	Part No.	Size	Material
10290	-3 AN x 1/8" NPT	Steel	10221	-8 AN x 3/8" NPT	Aluminum
10291	-3 AN x 1/8" NPT	Aluminum	10225	-8 AN x 1/2" NPT	Aluminum
10292	-4 AN x 1/8" NPT	Steel	10223	-10 AN x 3/8" NPT	Aluminum
10293	-4 AN x 1/8" NPT	Aluminum	10294	-10 AN x 1/2" NPT	Aluminum
10216	-4 AN x 1/4" NPT	Aluminum	10226	-10 AN x 3/4" NPT	Aluminum
10213	-4AN to 3/8" NPT	Aluminum	10227	-12 AN x 1/2" NPT	Aluminum
10217	-6 AN x 1/8" NPT	Aluminum	10224	-12 AN x 3/4" NPT	Aluminum
10220	-6 AN x 1/4" NPT	Aluminum	10206	-16AN to 3/4" NPT	Aluminum
10222	-6 AN x 3/8" NPT	Aluminum	10228	-16 AN x 1" NPT	Aluminum
10218	-6 AN x 1/2" NPT	Aluminum	10207	-20AN to 1-1/4" NPT	Aluminum
10219	-8 AN x 1/4" NPT	Aluminum			

## 45° ADAPTERS (AN MALE TO NPT)



Part No.	Size	Part No.	Size
10240	-3 AN x 1/8" NPT	10243	-8 AN x 3/8" NPT
10241	-4 AN x 1/8" NPT	10297	-10 AN x 1/2" NPT
10242	-6 AN x 1/4" NPT	10244	-12 AN x 3/4" NPT
10245	-6 AN x 3/8" NPT	10246	-16 AN x 1" NPT

## 90° ADAPTERS (MALE AN TO NPT)



Part No.	Size	Part No.	Size
10250A	-3 AN x 1/8" NPT	10253	-8 AN x 3/8" NPT
10251A	-4 AN x 1/8" NPT	10268	-8 AN x 1/2" NPT
10256	-4 AN x 1/4" NPT	10259	-10 AN x 3/8" NPT
10286	-4 AN x 3/8" NPT	10254	-10 AN x 1/2" NPT
10257	-6 AN x 1/8" NPT	10299	-10 AN x 3/4" NPT
10252A	-6 AN x 1/4" NPT	10269	-12 AN x 1/2" NPT
10258	-6 AN x 3/8" NPT	10255	-12 AN x 3/4" NPT
10249	-6 AN x 1/2" NPT	10285	-16 AN x 3/4" NPT
10267	-8 AN x 1/4" NPT	10284	-16 AN x 1" NPT

## REDUCER ADAPTER FITTINGS (AN TO AN)



Part No.	Size
10430	-3 AN x -4 AN
10431	-4 AN x -6 AN
10432	-6 AN x -8 AN
10433	-6 AN x -10 AN
10438	-6 AN x -12 AN
10434	-8 AN x -10 AN
10435	-8 AN x -12 AN
10436	-10 AN x -12 AN
10439	-10 AN x -16 AN
10437	-12 AN x -16 AN
10429	-16 AN x -20 AN

## UNION ADAPTER FITTINGS (AN TO AN)



Part No.	Size
10230	-3 AN
10231	-4 AN
10232	-6 AN
10233	-8 AN
10234	-10 AN
10235	-12 AN
10236	-16 AN
10237	-20AN

**90° FLARE UNION ADAPTERS (MALE AN)**



Part No.	Size
10550	-3 AN
10551	-4 AN
10552	-6 AN
10553	-8 AN
10554	-10 AN
10555	-12 AN
10556	-16 AN

**TEE ADAPTERS (MALE AN)**



Part No.	Size
10480	-3 AN
10481	-4 AN
10482	-6 AN
10483	-8 AN
10484	-10 AN
10485	-12 AN
10486	-16 AN

**FLARE TO PIPE TEE ADAPTERS**



Part No.	Size
10460	-3 AN x 1/8" NPT
10461	-4 AN x 1/8" NPT
10462	-6 AN x 1/4" NPT
10463	-8 AN x 3/8" NPT
10464	-10 AN x 1/2" NPT
10465	-12 AN x 3/4" NPT
10466	-16 AN x 1" NPT

**FLARE TO PIPE ON RUN TEE ADAPTERS**



Part No.	Size
10470	-3 AN x 1/8" NPT
10471	-4 AN x 1/8" NPT
10472	-6 AN x 1/4" NPT
10473	-8 AN x 3/8" NPT
10474	-10 AN x 1/2" NPT
10475	-12 AN x 3/4" NPT
10476	-16 AN x 1" NPT

**STRAIGHT BULKHEAD ADAPTERS**



Part No.	Size
10680	-3 AN
10681	-4 AN
10682	-6 AN
10683	-8 AN
10684	-10 AN
10685	-12 AN
10686	-16 AN

**BULKHEAD ADAPTER 45° ELBOWS**



Part No.	Size
10600	-3AN
10601	-4AN
10602	-6AN
10603	-8AN
10604	-10AN
10605	-12AN

**BULKHEAD ADAPTER 90° ELBOWS**



Part No.	Size
10608	-3AN
10609	-4AN
10610	-6AN
10611	-8AN
10612	-10AN
10613	-12AN

**BULKHEAD ADAPTER TEE ON RUN FITTINGS**



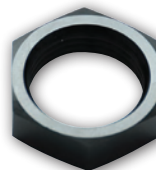
Part No.	Size
10624	-3AN
10625	-4AN
10626	-6AN
10627	-8AN
10628	-10AN
10629	-12AN

**BULKHEAD ADAPTER TEE FITTINGS**



Part No.	Size
10616	-3AN
10617	-4AN
10618	-6AN
10619	-8AN
10620	-10AN
10621	-12AN

**BULKHEAD NUTS**



Part No.	Size
10690	-3 AN
10691	-4 AN
10692	-6 AN
10693	-8 AN
10694	-10 AN
10695	-12 AN
10696	-16 AN

## AN TO METRIC ADAPTERS



Part No.	AN	Metric	Part No.	AN	Metric	Part No.	AN	Metric
16602	-4AN	8mm x 1.0	16613	-6AN	10mm x 1.25	16632	-10AN	12mm x 1.5
16603	-4AN	8mm x 1.25	16614	-6AN	10mm x 1.5	16633	-10AN	14mm x 1.5
16604	-4AN	10mm x 1.0	16616	-6AN	12mm x 1.5	16634	-10AN	16mm x 1.5
16605	-4AN	10mm x 1.25	10229	-6AN	14mm x 1.5	16635	-10AN	18mm x 1.5
16606	-4AN	10mm x 1.5	16619	-6AN	16mm x 1.5	16636	-10AN	20mm x 1.5
16607	-4AN	12mm x 1.0	10298	-6AN	18mm x 1.5	16642	-12AN	14mm x 1.5
16608	-4AN	12mm x 1.25	16624	-8AN	12mm x 1.5	16643	-12AN	16mm x 1.5
16609	-4AN	12mm x 1.5	16625	-8AN	14mm x 1.5	16644	-12AN	18mm x 1.5
16611	-4AN	14mm x 1.5	16626	-8AN	16mm x 1.5	16645	-12AN	20mm x 1.5
16612	-6AN	10mm x 1.0	16627	-8AN	18mm x 1.5			

## AN FLARE TO AN STRAIGHT CUT (WITH O-RING) ADAPTER FITTINGS



Part No.	AN Flare	AN Straight Thread	Part No.	AN Flare	AN Straight Thread
16821	-4AN	7/16-20 Thread (4)	16835	-10AN	3/4-16 Thread (8)
16822	-4AN	9/16-18 Thread (6)	16836	-10AN	7/8-14 Thread (10)
16823	-4AN	3/4-16 Thread (8)	16837	-10AN	1-1/6-12 Thread (12)
16825	-6AN	7/16-20 Thread (4)	16838	-10AN	1-5/16-12 Thread (16)
16826	-6AN	9/16-18 Thread (6)	16839	-12AN	3/4-16 Thread (8)
16827	-6AN	3/4-16 Thread (8)	16840	-12AN	7/8-14 Thread (10)
16828	-6AN	7/8-14 Thread (10)	16841	-12AN	1-1/6-12 Thread (12)
16830	-8AN	9/16-18 Thread (6)	16842	-12AN	1-5/16-12 Thread (16)
16831	-8AN	3/4-16 Thread (8)	16844	-16AN	1-1/6-12 Thread (12)
16832	-8AN	7/8-14 Thread (10)	16845	-16AN	1-5/16-12 Thread (16)
16833	-8AN	1-1/6-12 Thread (12)	16847	-20AN	1-5/16-12 Thread (16)
16834	-10AN	9/16-18 Thread (6)	16848	-20AN	1-5/8-12 Thread (20)

## FEMALE UNION ADAPTERS (AN TO AN)



Part No.	Size
10700	-3AN
10701	-4AN
10702	-6AN
10703	-8AN
10704	-10AN
10705	-12AN
10706	-16AN
10708	-6AN x -8AN
10709	-8AN x -10AN

## FEMALE 45° UNION ADAPTERS (AN TO AN)



Part No.	Size
10711	-4 AN
10712	-6 AN
10713	-8 AN
10714	-10 AN
10715	-12 AN

## FEMALE 90° UNION ADAPTERS (AN TO AN)



Part No.	Size
10731	-4 AN
10732	-6 AN
10733	-8 AN
10734	-10 AN
10735	-12 AN



**FLARE CAPS**



Part No.	Size
10450	-3 AN
10451	-4 AN
10452	-6 AN
10453	-8 AN
10454	-10 AN
10455	-12 AN
10456	-16 AN

**FLARE PLUGS**



Part No.	Size
10440	-3 AN
10441	-4 AN
10442	-6 AN
10443	-8 AN
10444	-10 AN
10445	-12 AN
10446	-16 AN

**FEMALE TO MALE REDUCER ADAPTERS AN**



Part No.	Female Size	Male Size
10830	-4AN	-3AN
10832	-6AN	-4AN
10833	-8AN	-6AN
10834	-10AN	-6AN
10835	-10AN	-8AN
10837	-12AN	-10AN

**FEMALE TO MALE EXPANDER ADAPTERS AN**



Part No.	Female Size	Male Size
10840	-3AN	-4AN
10841	-4AN	-6AN
10842	-6AN	-8AN
10843	-8AN	-10AN
10844	-10AN	-12AN
10845	-12AN	-16AN

**FEMALE FLARE TEE ADAPTERS**



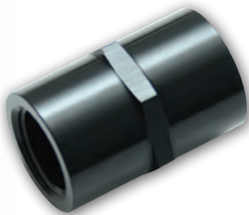
Part No.	Size
10871	-4AN
10872	-6AN
10873	-8AN
10874	-10AN

**PIPE REDUCER ADAPTERS NPT**



Part No.	Female Size	Male Size
10850	1/8 NPT	1/4 NPT
10851	1/8 NPT	3/8 NPT
10852	1/4 NPT	3/8 NPT
10853	1/8 NPT	1/2 NPT
10854	1/4 NPT	1/2 NPT
10856	3/8 NPT	1/2 NPT
10855	1/4 NPT	3/4 NPT
10857	3/8 NPT	3/4 NPT
10858	1/2 NPT	3/4 NPT

**PIPE COUPLERS**



Part No.	Size
10380	1/8" NPT
10381	1/4" NPT
10382	3/8" NPT
10383	1/2" NPT
10384	3/4" NPT

**PIPE ADAPTERS**



Part No.	Size
10370	1/8" NPT
10371	1/4" NPT
10372	3/8" NPT
10373	1/2" NPT
10374	3/4" NPT

**SOCKET PIPE PLUGS**



Part No.	Size
10490	1/8" NPT
10491	1/4" NPT
10492	3/8" NPT
10493	1/2" NPT
10494	3/4" NPT

**FEMALE PIPE TEE ADAPTERS NPT**



Part No.	Size
10860	1/8 NPT
10861	1/4 NPT
10862	3/8 NPT
10863	1/2 NPT

## BILLET ALUMINUM QUICK RELEASE FITTINGS

Vibrant Performance T6061 Billet Aluminum Quick Release Fittings are incredibly lightweight and allow for quick and easy disassembly by hand of any fluid related component without mess or spillage. Perfect for use on Oil, Coolant and Fuel line applications.



Part No.	Size
20804	-4 AN
20806	-6 AN
20808	-8 AN
20810	-10 AN
20812	-12 AN



## BILLET ALUMINUM ONE WAY CHECK VALVES

Vibrant Performance One-Way Check Valves are designed to prevent the flow back of all varieties of fuel, oil or coolant.

Manufactured from lightweight T6061 Billet Aluminum, our cost-effective Check Valves will stand up to the most rigorous operating environments. They are suitable for operating pressure up to 300psi, feature the ability to open under very low pressure (as low as 2psi) and have a functional operating temperature range of -30° F to 400° F

Part No.	Description
11187	-6AN
11190	-8AN
11191	-10AN
11192	-12AN



## HOSE BARB ADAPTER FITTINGS

### MALE AN TO HOSE BARB STRAIGHT ADAPTERS



Part No.	AN Size	Hose Size
11207	-6AN	3/8"
11208	-8AN	1/2"
11209	-10AN	1/2"

### MALE NPT TO HOSE BARB STRAIGHT ADAPTERS



Part No.	NPT Size	Hose Size
11200	1/8	1/4"
11201	1/4	3/8"
11202	3/8	1/2"
11203	1/2	5/8"
11204	3/4	3/4"

### MALE NPT TO HOSE BARB 45 DEG ADAPTERS



Part No.	NPT Size	Hose Size
11220	1/8	1/4"
11221	1/4	3/8"
11222	3/8	1/2"
11223	1/2	5/8"
11224	3/4	3/4"

### MALE NPT TO HOSE BARB 90 DEG ADAPTERS



Part No.	NPT Size	Hose Size
11230	1/8	1/4"
11231	1/4	3/8"
11232	3/8	1/2"
11233	1/2	5/8"
11234	3/4	3/4"

## HARD LINES AND TUBE ADAPTERS

Vibrant Performance Hard Lines are ideal for Nitrous, Fuel and Water service. Simply flare with a 37 degree flaring tool and these lines will be ready for use with our Tube Nuts and Tube Sleeves listed below.

Our new offering of Hard Line Adapter Fittings offers a convenient solution for transitioning from Hard Lines to AN thread. Assembly and alignment is made quick and easy.

### ALUMINUM AND STAINLESS STEEL HARD LINES



#### ALUMINUM HARD LINES

Part No.	Description
16410	5/16" OD (7.95mm) Aluminum Hard Line (25 foot spool)
16411	3/8" OD (9.5mm) Aluminum Hard Line (25 foot spool)
16412	1/2" OD (12.7mm) Aluminum Hard Line (25 foot spool)

#### STAINLESS STEEL HARD LINES

Part No.	Description
16401	3/8" OD (9.5mm) Stainless Steel Hard Line (25 foot spool)
16402	1/2" OD (12.7mm) Stainless Steel Hard Line (25 foot spool)

### TUBE TO FEMALE AN ADAPTERS



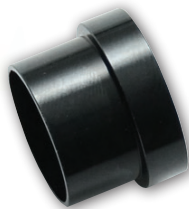
Part No.	AN Size	Tube Size
16445	-6AN Female	5/16"
16446	-6AN Female	3/8"
16448	-8AN Female	1/2"

### TUBE TO MALE AN ADAPTERS



Part No.	AN Size	Tube Size
16455	-6AN Male	5/16"
16456	-6AN Male	3/8"
16458	-8AN Male	1/2"

### TUBE SLEEVES



Part No.	AN Size	Use with Tube Size
10760	-3 AN	3/16"
10761	-4 AN	1/4"
10762	-6 AN	3/8"
10763	-8 AN	1/2"
10764	-10 AN	5/8"
10765	-12 AN	3/4"
10766	-16 AN	1"

### TUBE NUTS



Part No.	AN Size	Use with Tube Size
10750	-3 AN	3/16"
10751	-4 AN	1/4"
10752	-6 AN	3/8"
10753	-8 AN	1/2"
10754	-10 AN	5/8"
10755	-12 AN	3/4"
10756	-16 AN	1"

### BRASS OLIVE INSERTS



Part No.	Description
16465A	Pack of 5, Brass Olive Inserts for 5/16"
16466A	Pack of 5, Brass Olive Inserts for 3/8"
16468A	Pack of 5, Brass Olive Inserts for 1/2"

## FUEL CELL BULKHEAD ADAPTER FITTINGS (WITH WASHERS AND NUT)

Connect your fuel line to your fuel cell or tank with these high quality fuel cell bulkhead adapters. These double anodized and hand polished aluminum adapters won't restrict fuel flow and come complete with two PTFE washers.



Part No.	Size
16892	-6AN
16893	-8AN
16894	-10AN
16895	-12AN

## Y ADAPTERS



Part No.	Size
10803	-3 AN x dual -3 AN
10814	-4AN x dual -3 AN
10804	-4 AN x dual -4 AN
10805	-6 AN x dual -4 AN
10806	-6 AN x dual -6 AN
10807	-8 AN x dual -6 AN
10808	-8 AN x dual -8 AN

Part No.	Size
10809	-10 AN x dual -8 AN
10810	-10 AN x dual -10 AN
10813	-12 AN x dual -8 AN
10811	-12 AN x dual -10 AN
10812	-12 AN x dual -12 AN
10818	1/8" NPT x dual -3 AN

## BILLET ALUMINUM Y BLOCKS (WITH 1/8" NPT PORT)



Part No.	Size
10821	1/2" NPT x dual 3/8" NPT
10820	3/8" NPT x dual 3/8" NPT
10822	1/2" NPT x dual 1/2" NPT

## MALE AN TO MALE NPT UNION ADAPTERS WITH 1/8" NPT PORT



Part No.	AN Size	NPT Size
16495	-6AN	1/4" NPT
16496	-6AN	3/8" NPT
16497	-8AN	1/4" NPT
16498	-8AN	3/8" NPT

## MALE AN UNION ADAPTERS WITH 1/8" NPT PORT



Part No.	Size
16474	-4AN
16476	-6AN
16478	-8AN

## FEMALE TO MALE AN UNION ADAPTERS WITH 1/8" NPT PORT



Part No.	Male Size	Female Size
16484	-4AN	-4AN
16486	-6AN	-6AN
16488	-8AN	-8AN

## PUSH-ON EFI ADAPTER FITTINGS



Part No.	AN Size	Hose Size
16880	-6AN	5/16"
16881	-6AN	3/8"

## QUICK DISCONNECT EFI ADAPTER FITTINGS



Part No.	AN Size	Hose Size
16885	-6AN	5/16"
16886	-6AN	3/8"