

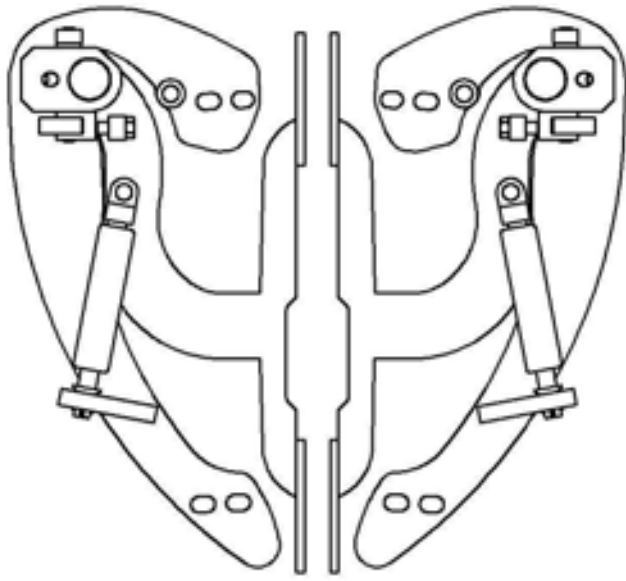


INFINITI G35

2003-2004

INSTRUCTIONS

*US PATENT #6,808,223 & #6,845,547
AND OTHER PATENTS PENDING*



THIS KIT INCLUDES:

- 10 M8-1.25X30MM BOLTS WITH WASHERS
- 6 M8-1.25X40MM BOLTS WITH WASHERS
- 2 SHOULDER BOLTS WITH WASHERS
- RIGHT AND LEFT HINGE ASSEMBLY
- 2 SHOCKS 720 PSI
- 2 PINS

TOOLS REQUIRED FOR INSTALLATION:

	<ul style="list-style-type: none"> ➤ AIR RACHET, GRINDER AND CUTTER.
	<ul style="list-style-type: none"> ➤ 7MM, 8MM, 10MM, 11MM, 13MM, SOCKETS AND EXTENSION.
	<ul style="list-style-type: none"> ➤ FORK AND PHILLIP'S SCREW DRIVERS
	<ul style="list-style-type: none"> ➤ SPACERS FOR THE DOOR GAP.
	<ul style="list-style-type: none"> ➤ 3/16 ALLEN WRENCH
	<ul style="list-style-type: none"> ➤ 1/4 TORX BIT
	<ul style="list-style-type: none"> ➤ 9/16 WRENCH
	<ul style="list-style-type: none"> ➤ LOCKTITE RED

OTHER TOOLS MAY BE NEEDED DEPENDING ON YOUR VEHICLE.

1) Disconnect the battery.

2) Open door completely and remove the door catch that is attached to the inner frame and the door.



3) Remove all 6 screws that are attached to the inner fender well.

4) Remove 4, 10mm bolts 2, 12mm bolts under the hood, and 3 bolts on front bumper.



5) Take out the door panel. First take out the screw cover using the fork screw driver.



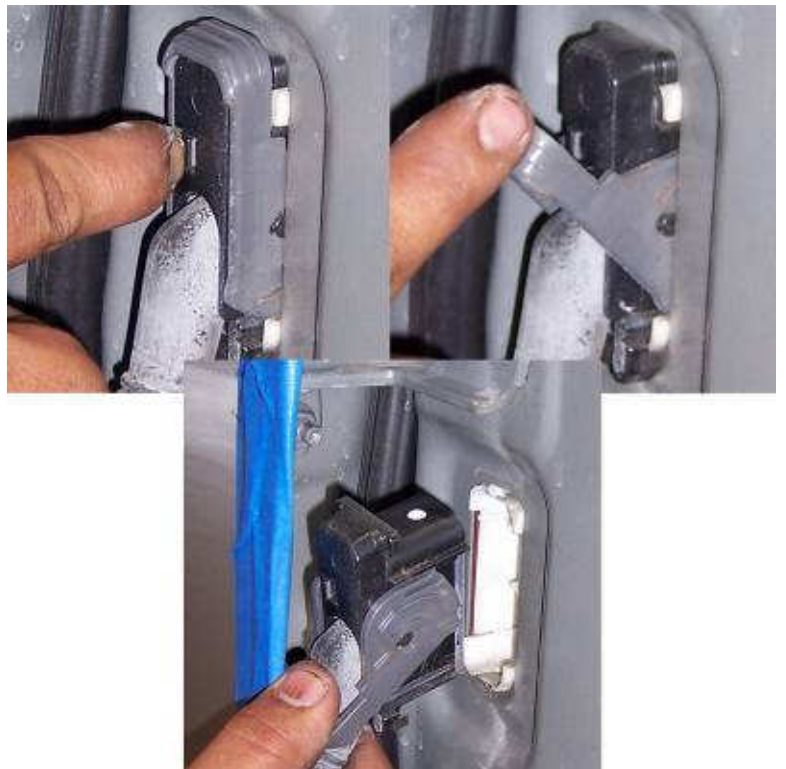
6) Using the 10mm socket take out the bolts that hold the door panel.





7) Remove the door catch thru speaker hole.

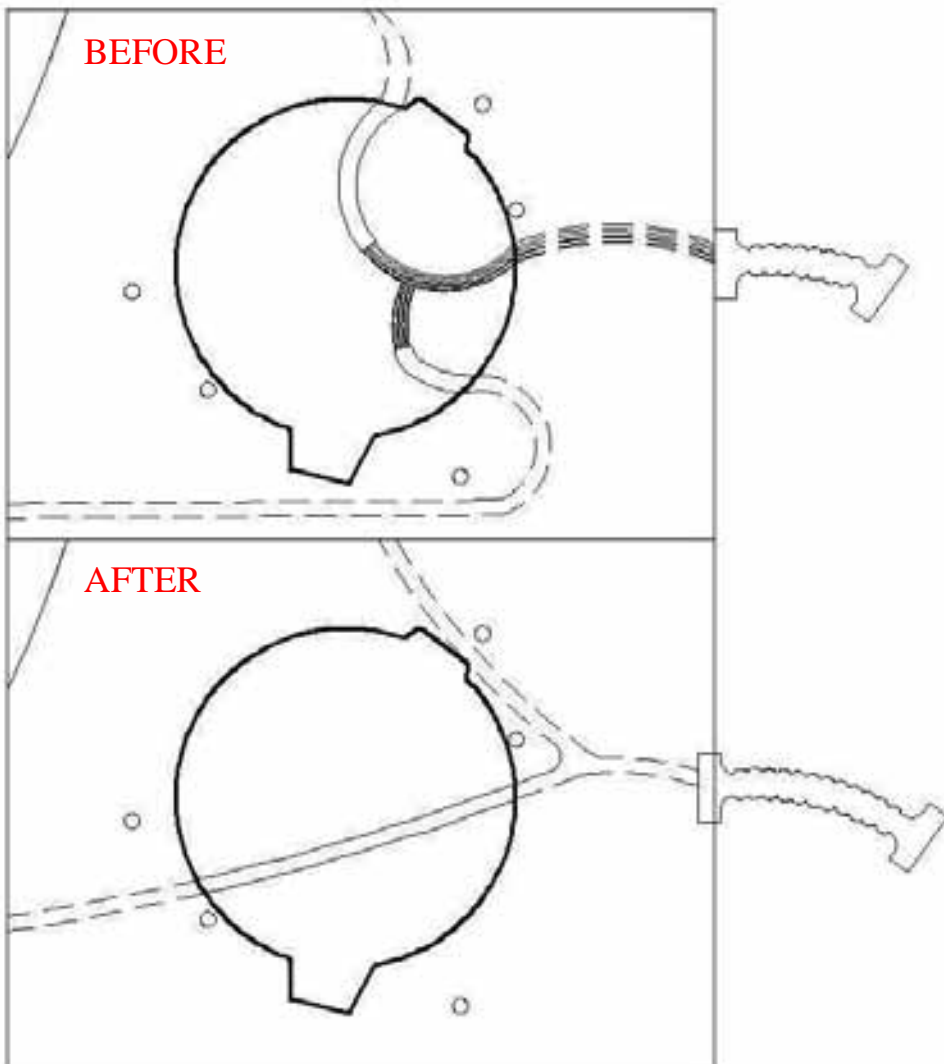
8) Remove the wire harness from the firewall.
(see pictures for details)



9) Follow the factory wiring thru the door and remove all necessary plastic fasteners to give more wire slack. Remove the tape that is holding the wires to the grommet.



Hint(Two fasteners by the speaker and one in front of the door, by where the door stopper was)*



Remove the speaker. Cut the factory wire looms back about 1 inch, on both wires. Reach in and pull the wire harness with the plug through the speaker hole and stretch the factory wire boot. Hold it in place with black tape.

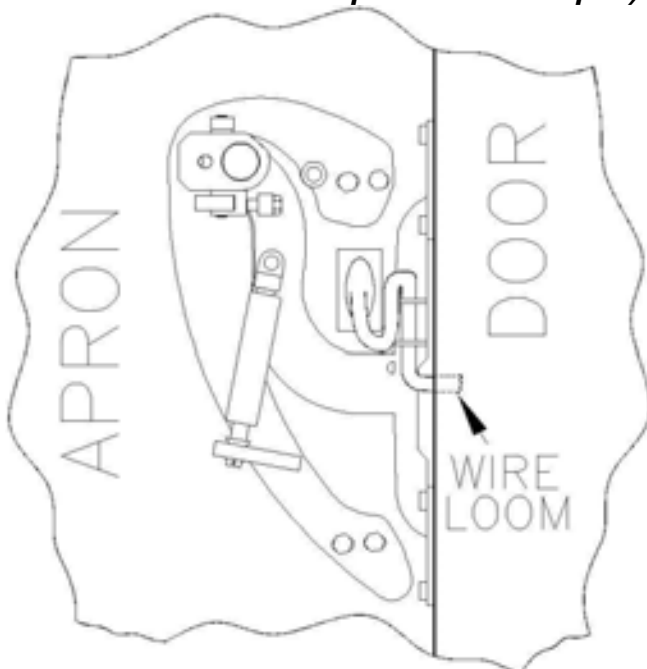
10) Close door and use painters tape to secure the door in preparation for factory hinge removal.



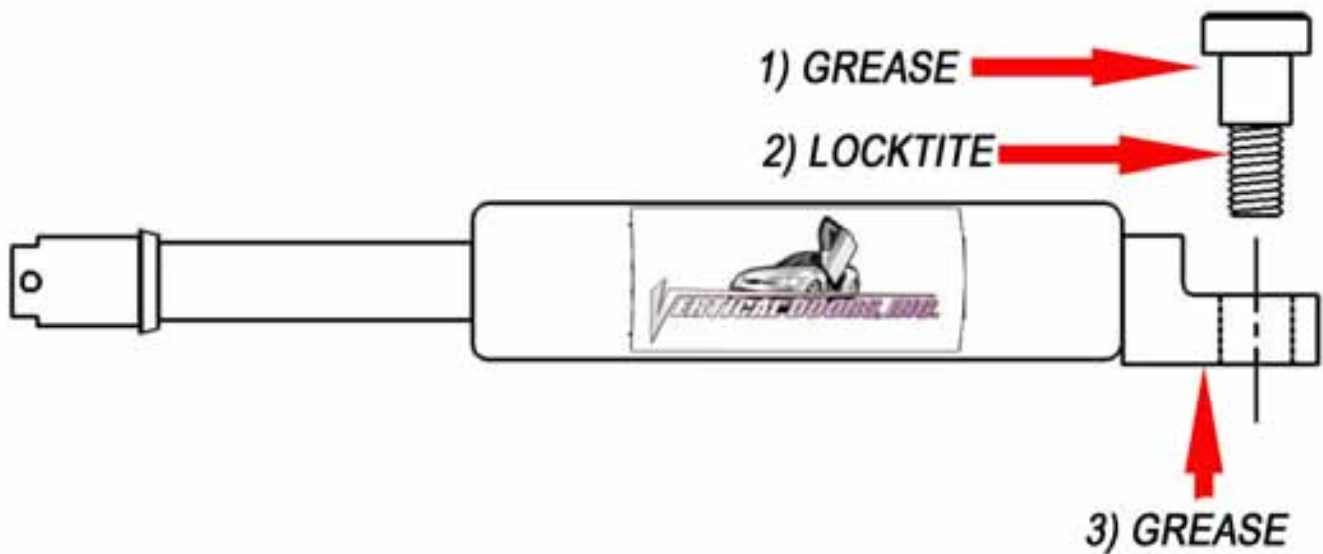
11) Remove factory hinges, and install door spacers



Hint (You can make your spacer out of paint sticks and about 8-10 turns of blue painters tape)*



12) Install new hinge in place making sure is flat against all contact surfaces, insert new bolts on firewall side and factory bolts on door side. Once the new vertical door hinge is secure remove the painter's tape.
Hint(When locking hinge in place tighten bolts or nuts to door first then firewall bolts second.*



***IMPORTANT STEP: DO NOT SKIP THIS STEP. THIS STEP IS CRUCIAL IN YOUR INSTALLATION PROCESS, IF THIS STEP IS NOT COMPLETED WHEN INSTALLING THE VERTICAL DOOR KIT; ALL WARRANTIES ARE VOIDED, AND MAY CAUSE FUTURE PROBLEMS WITH YOUR VERTICAL DOOR SYSTEM.**

1ST, make sure you put grease on the body of shoulder bolt where the arrow is pointing.

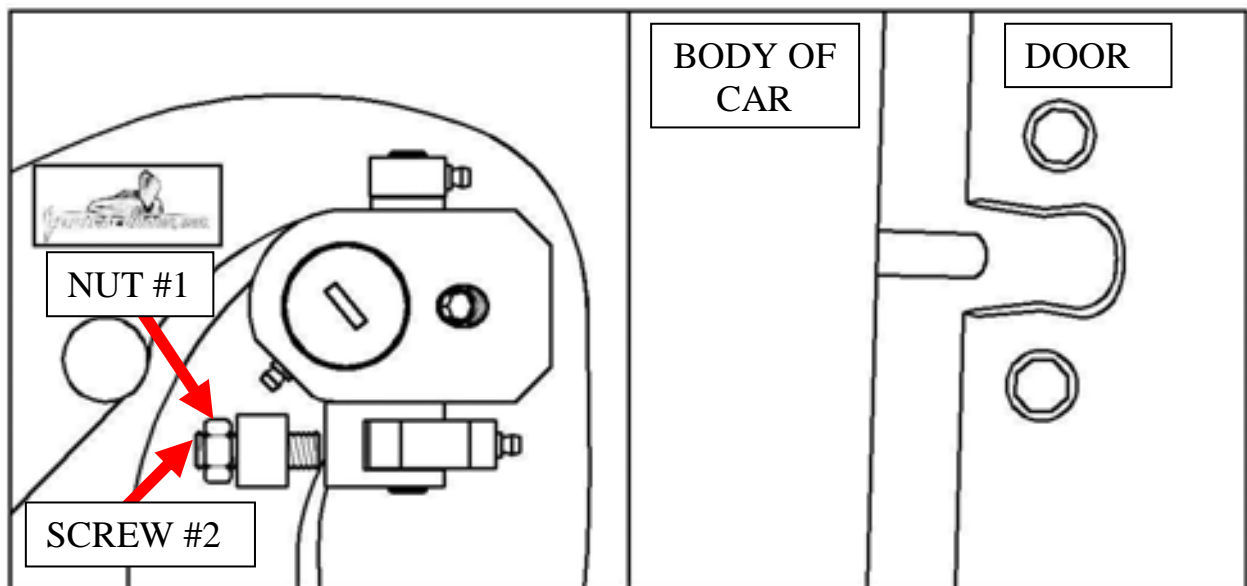
2ND, make sure you put red Locktite, where the arrow is pointing, on thread of shoulder bolt.

3RD, make sure you put grease on the bottom side of the shock end.



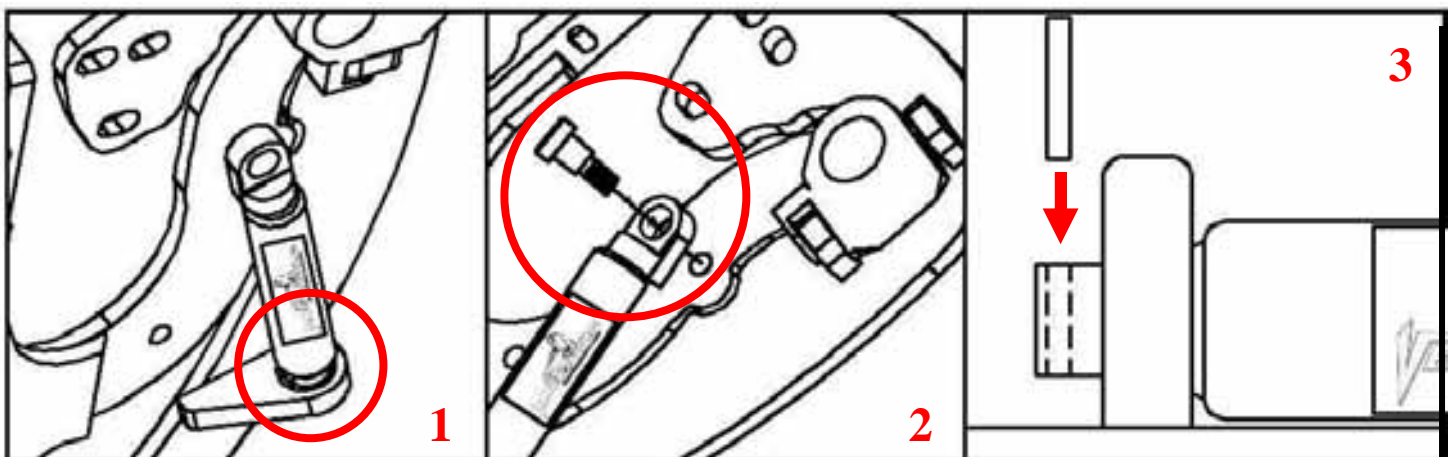
WARNING! THE USE OF ANY TYPE PLYERS, PAINT OR FOREING MATERIALS ON THE SHOCK'S BODY OR SHAFT WILL VOID THE WARRANTY.

13) Once hinge is locked in place, break nut #1 then turn Allen set screw #2 on fig until it hits the block then open the door and continue to adjust until the door matches with the striker, open and close door making sure it closes like factory.



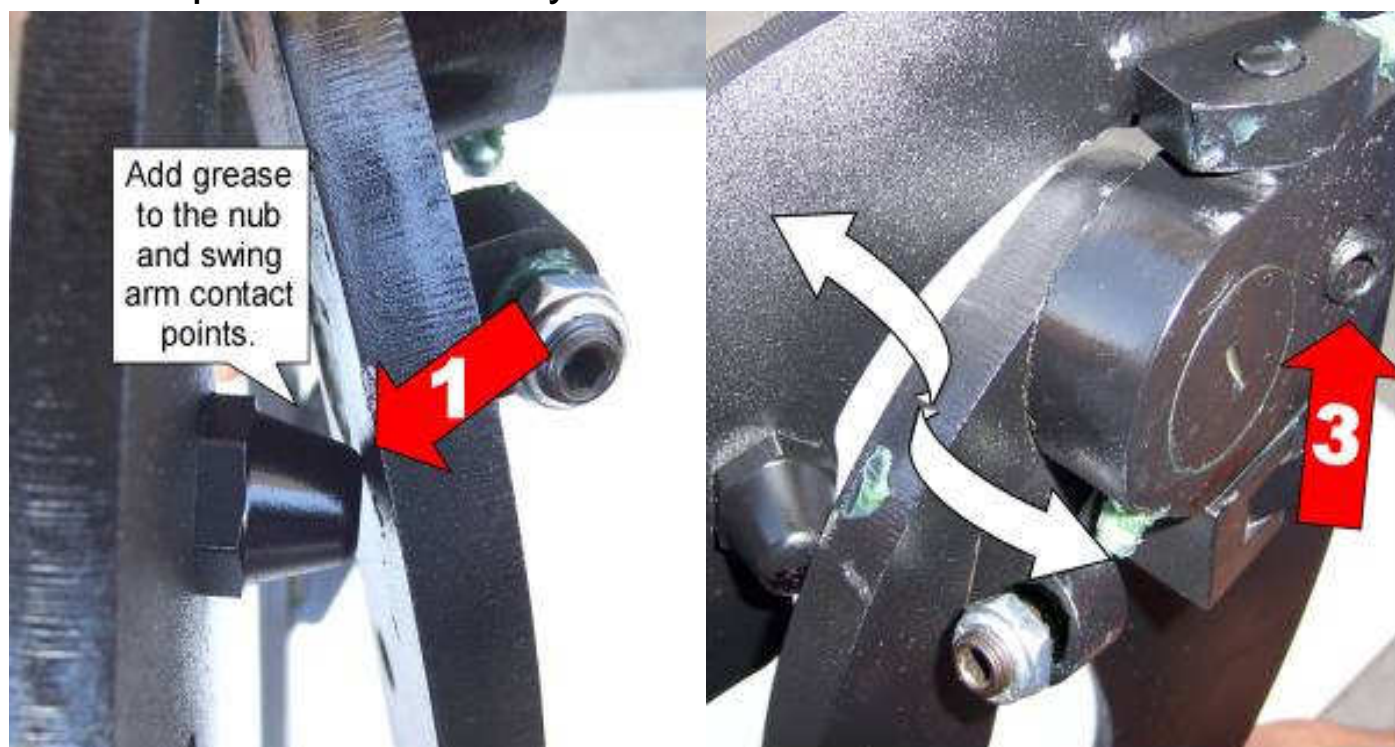
*Hint**(leave #1 nut loose until shock is installed Allen set screw will have to be re-adjusted after shock is installed).

14) Install the shock.

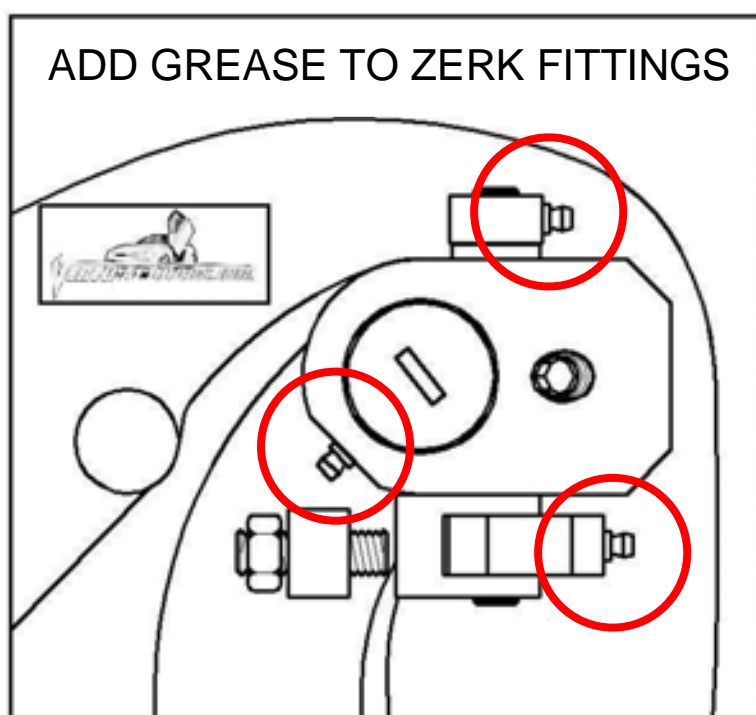


*Hint** (You will need a helper to raise the door). (Slip the spherical rod mount into the spherical ball bearing (1). Using a 1/4 Allen wrench, tighten the screw into the swing arm (2). After the shock is installed secure it by installing the pin in the bottom shock end (3).

15) After shock is installed re-install door panel and lift the door. Adjust door opening set screw #3 clockwise until distance between nub and swing arm is enough so that the swing arm moves up and down freely.



Hint (Fine tune the Allen Adjustment screw (#2) to realigned striker with door. After the door is align test door by opening and closing, lifting and lowering door several times.*



Note: Do not install fender until the adjustment of the door is accurate, and the set screw is tightly secure. Also make sure everything is tight, adjustment is set and everything is Loctite.

16) You will have to cut the inner lip of your fender to make room for the new Vertical Doors hinge.



17) Lift the door and Replace the fender by reversing steps 3,4,5,6, and 8.

Hint(Make sure the electrical wires don't get pinched enough to damage wires)*

18) For the other side just follow steps 1-17.