



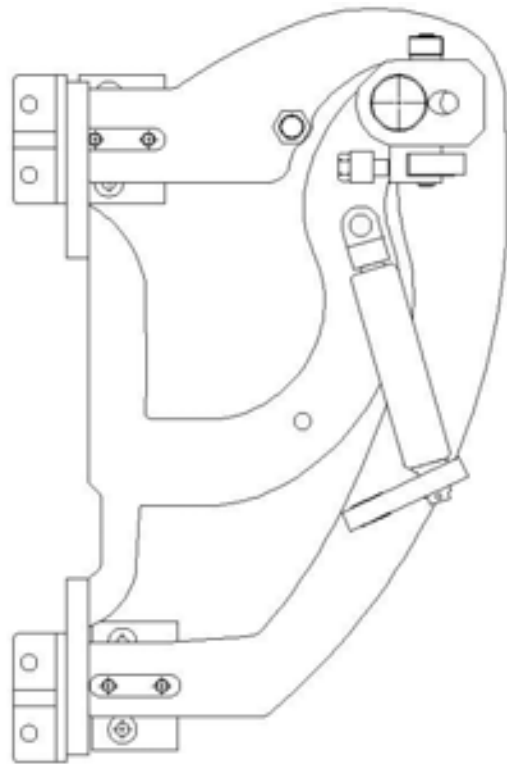
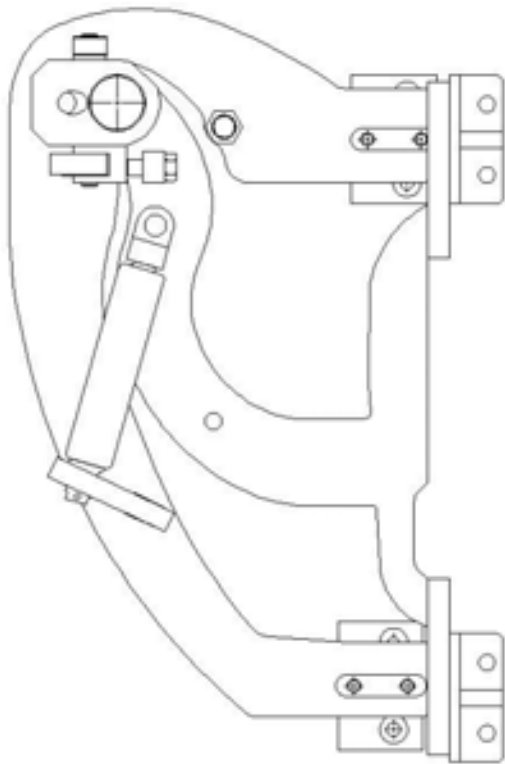
# CHRYSLER CROSSFIRE

U.S. PATENTS

#6,808,223; #6,845,547; #7,140,075; #7,059,655

PATENTS AGGRESSIVELY ENFORCED!

**PLEASE CAREFULLY READ ALL INSTRUCTIONS BEFORE  
ATTEMPTING TO INSTALL THIS PRODUCT.**



**THIS KIT INCLUDES:**

- 16 M8-1.25X30MM BOLTS WITH WASHERS
- 2 SHOULDER BOLTS WITH WASHERS
- 2 PINS

- RIGHT AND LEFT HINGE ASSEMBLY
- 8 5/16-18X1.5 F.H.C.S
- 2 SHOCKS \_\_740 PSI

**TOOLS REQUIRED FOR INSTALLATION:**

	<ul style="list-style-type: none"> <li>➤ AIR RACHET, GRINDER AND CUTTER.</li> </ul>
	<ul style="list-style-type: none"> <li>➤ 7MM, 8MM, 10MM, 11MM, 13MM, SOCKETS AND EXTENSION.</li> </ul>
	<ul style="list-style-type: none"> <li>➤ FORK AND PHILLIP'S SCREW DRIVERS</li> </ul>
	<ul style="list-style-type: none"> <li>➤ SPACERS FOR THE DOOR GAP.</li> </ul>
	<ul style="list-style-type: none"> <li>➤ 3/16 ALLEN WRENCH</li> </ul>
	<ul style="list-style-type: none"> <li>➤ 1/4 TORX BIT</li> </ul>
	<ul style="list-style-type: none"> <li>➤ 9/16 WRENCH</li> </ul>
	<ul style="list-style-type: none"> <li>➤ LOCKTITE RED</li> </ul>

**“Installers with experience recommended”**

**(Note: The pictures on the manual are for reference only they may not match your vehicle.)**

1) Disconnect the battery.

2) Remove fender:

Remove all Phillip’s screws or fasteners from the wheel well. The top and front of the fender



3) Remove the door catch:  
Open the door and remove bolts from the body, push the door catch inside the door.

Optional: If you want to remove the door catch from the door you will have to remove the door panel



4) Preparation for factory hinge removal.

Open the door and remove the kick plate.

Disconnect the air hose (yellow) and the two wire harness.

*Note: make sure not to put any kinks on the air house.*



Close the doors and mark the factory location of the door in the horizontal and vertical (pic 1 & 2) positions.

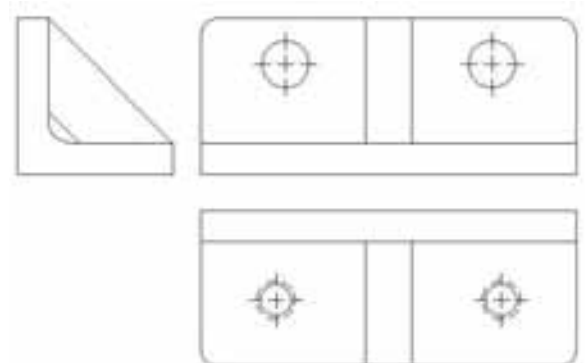
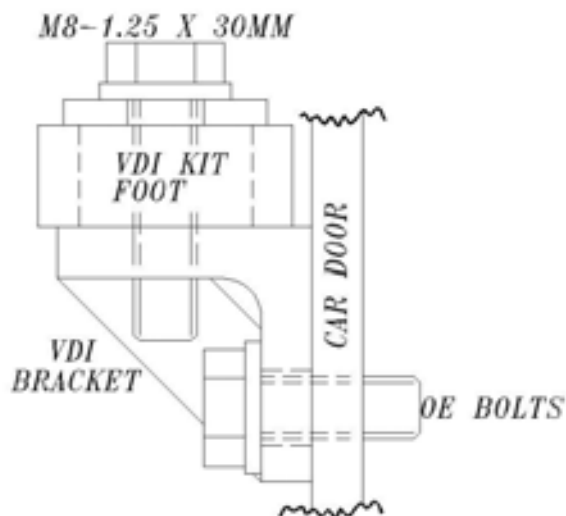


Also make sure to mark the distance between the apron and the edge of the door (pic 3 & 4) as shown, this will ensure a factory look and it will make realigning the door with the fender fast and easy.

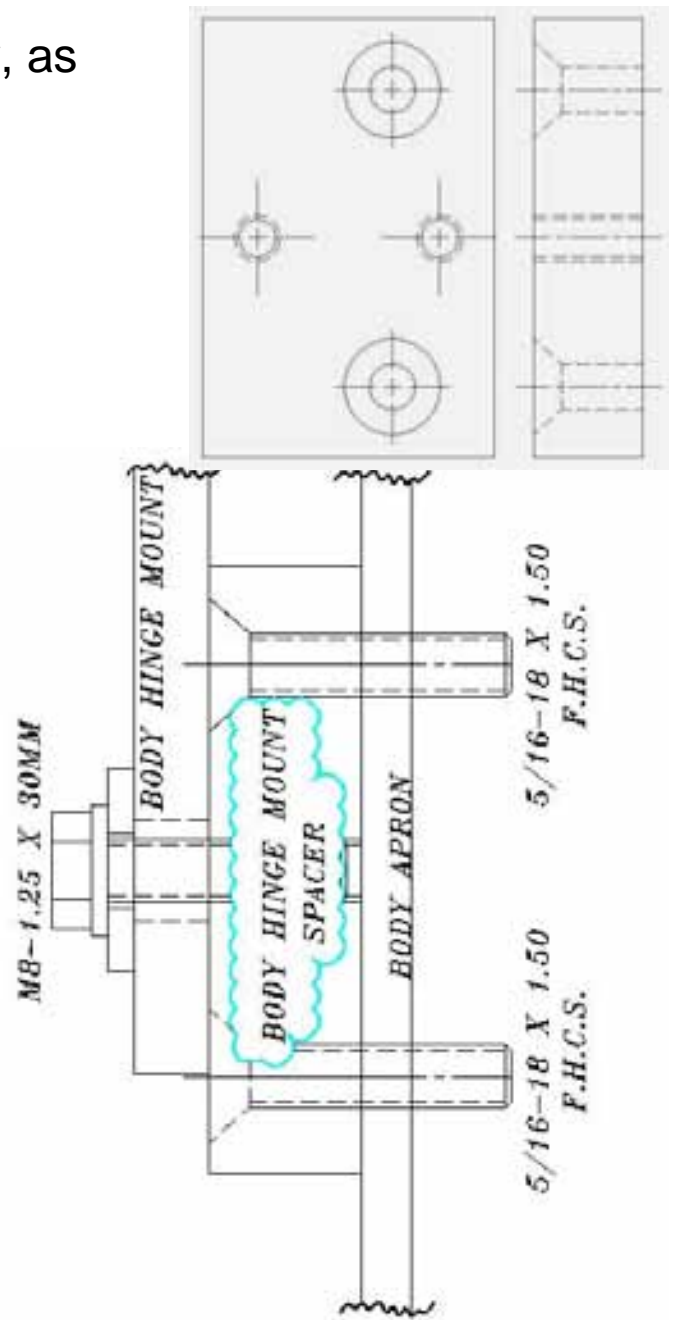


After marking the door and disconnecting the wire harness remove the door.

**5)** Install the brackets on the door as shown. To give it a finish look you may have to paint the inside of the door to match the outside of the door.



6) Installing the brackets to the body, as shown.

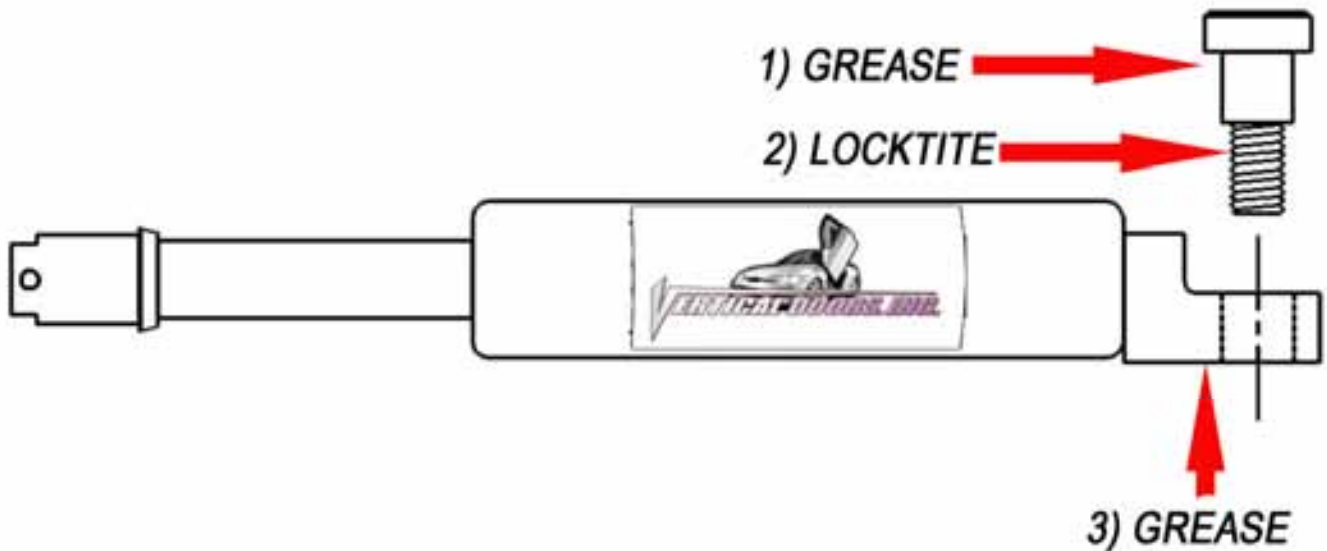


7) New Vertical Doors Inc. system:

In order for the vertical hinge to sit flat against the apron you might have to cut, drill or well depending on you particular vehicle. The new Vertical Doors Inc. system should sit flat against apron to work properly.

*Hint\* Tighten the bolts on the door first and then install the bolts on the body.*





**\*IMPORTANT STEP: DO NOT SKIP THIS STEP. THIS STEP IS CRUCIAL IN YOUR INSTALLATION PROCESS, IF THIS STEP IS NOT COMPLETED WHEN INSTALLING THE VERTICAL DOOR KIT; ALL WARRANTIES ARE VOIDED, AND MAY CAUSE FUTURE PROBLEMS WITH YOUR VERTICAL DOOR SYSTEM.**

*1ST, make sure you put grease on the body of shoulder bolt where the arrow is pointing.*

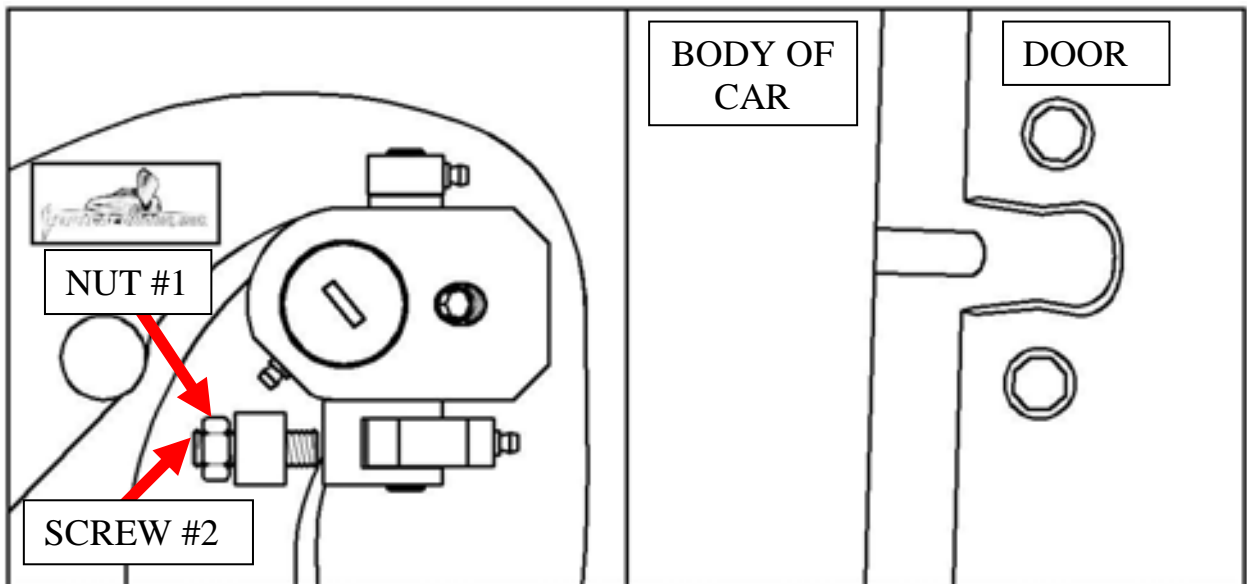
*2ND, make sure you put red Locktite, where the arrow is pointing, on thread of shoulder bolt.*

*3RD, make sure you put grease on the bottom side of the shock end.*



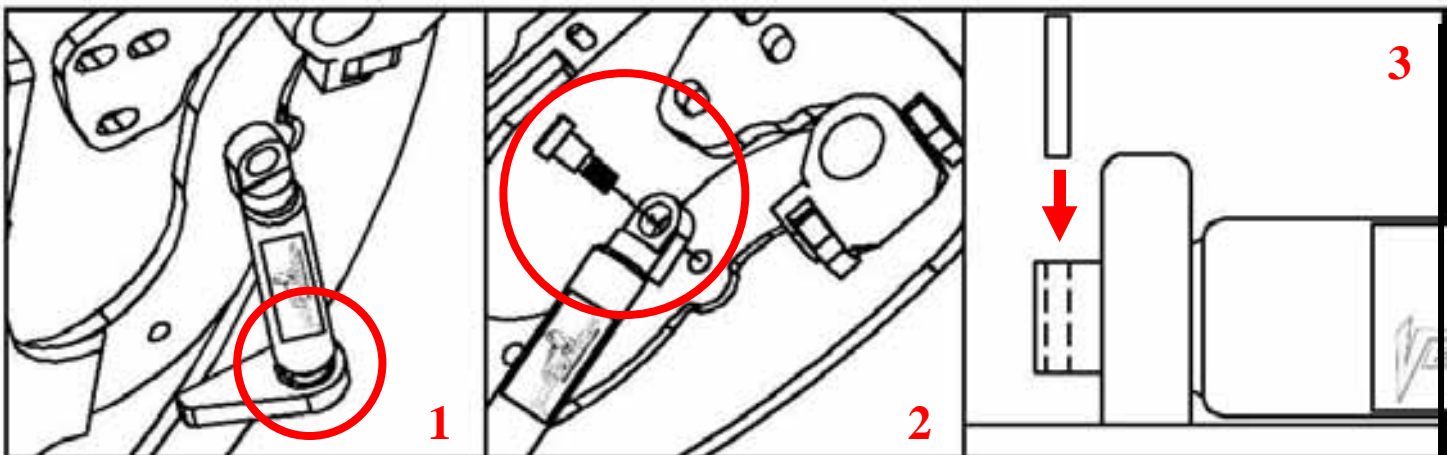
**WARNING! THE USE OF ANY TYPE PLYERS, PAINT OR FOREIGN MATERIALS ON THE SHOCK'S BODY OR SHAFT WILL VOID THE WARRANTY.**

**8)** Once hinge is locked in place, break nut #1 then turn Allen set screw #2 on fig until it hits the block then open the door and continue to adjust until the door matches with the striker, open and close door making sure it closes like factory.



*Hint\*(leave #1 nut loose until shock is installed Allen set screw will have to be re-adjusted after shock is installed.*

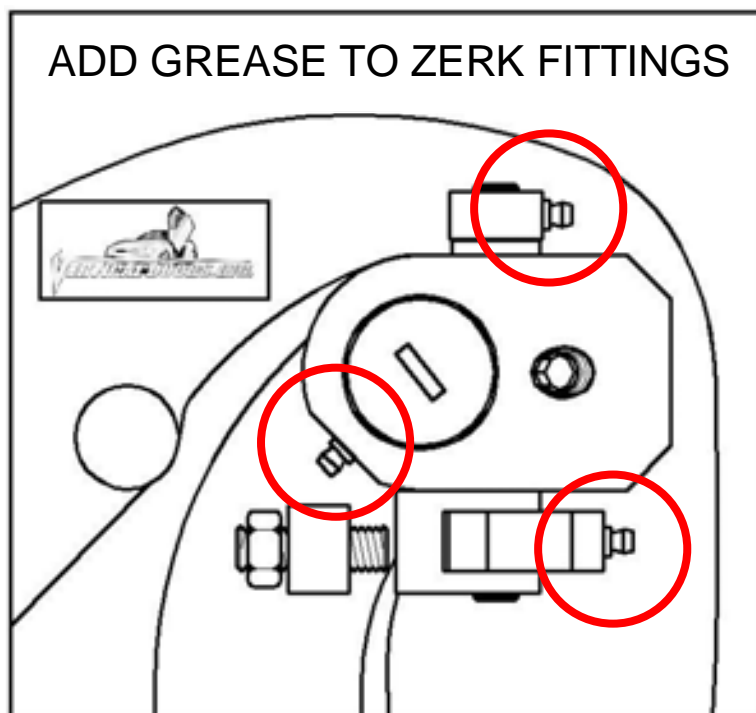
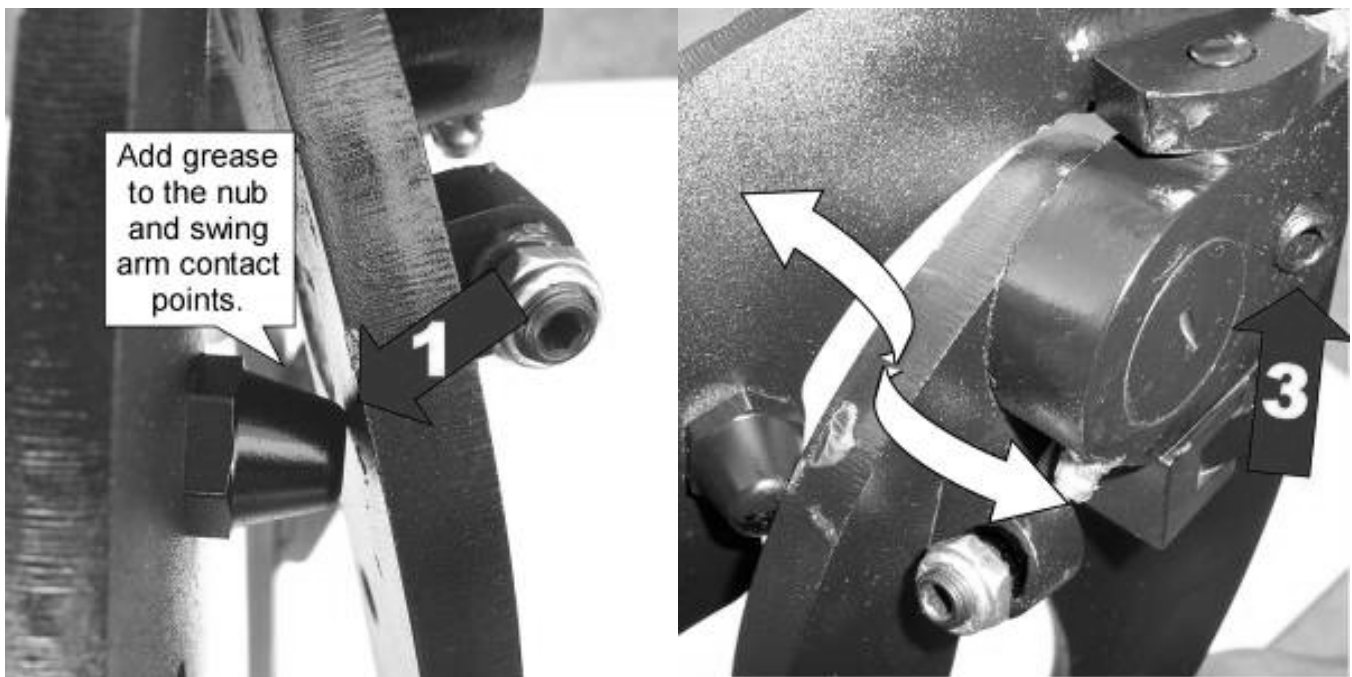
**9)** Install the shock.



*Hint\* (You will need a helper to raise the door). (Slip the spherical rod mount into the spherical ball bearing (1). Using a 1/4 Allen wrench, tighten the screw into the swing arm (2). After the shock is installed secure it by installing the pin in the bottom shock end (3).*

**10)** After shock is installed re-install door panel and lift the door. Adjust door opening screw #3 clockwise until distance between nub and swing arm is enough so that the swing arm moves up and down freely.

*Hint\* (Fine tune the Allen Adjustment screw (#2) to realigned striker with door. After the door is align test door by opening and closing, lifting and lowering door several times.*



**Note: Do not install fender until the adjustment of the door is accurate, and the set screw is tightly secure. Also make sure everything is tight, adjustment is set and everything is Loctite.**



**11) Modify factory wire loom:**  
In order to be able to open and raise the door, cut the factory wire boot in half and add wire loom to protect exposed wires.

*As an extra precaution you may add a piece of wire loom to cover the edge of the swing arm.*



**12) Cut the inner lip of your fender to make room for the new Vertical Doors hinge. Note: After you have cut the fender use a sander or grinder and make sure the surface is completely flat.**



**13)** Close the door and replace the fender by reversing step 2.

*Hint\*(Make sure the electrical wires don't get pinched enough to damage wires take special notice of the air hose.)*

**14)** For the other side just follow steps 2-13.