

VAP *amore*[®]
THE LOVE OF STEAM

MR1000[™]
FORZA



**STEAM CLEANER
INSTRUCTION BOOK AND USERS GUIDE**

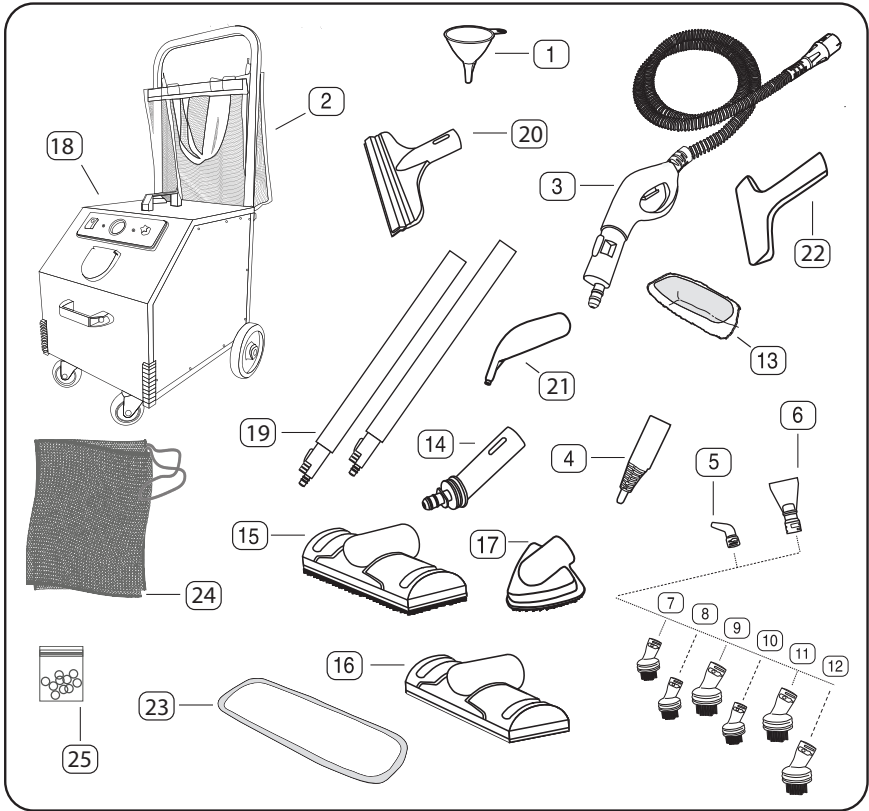
SAFETY INFORMATION



FAILURE TO FOLLOW SAFETY INFORMATION AND WARNINGS MAY CAUSE PERMANENT DAMAGE AND VOID PRODUCT WARRANTY.

1. Do not leave the steam cleaner unattended when plugged in. Unplug from socket when not in use.
2. To prevent electric shock use only with a grounded outlet.
3. Not to be used as a toy. Close supervision is necessary when used near children.
4. Use only as described in this manual.
5. Do not use with a damaged cord or plug. If the supply cord and/or plug is damaged, they must be replaced by Vapamore in order to prevent a fire hazard.
6. Do not pull or carry by the cord, use the cord as a handle, allow the cord to come into contact with hot or sharp surfaces or close a door on the cord.
7. Do not unplug by pulling on the cord.
8. Do not handle the plug or steam cleaner with wet hands.
9. Do not pull or drag steam cleaner using the steam gun and hose.
10. Only carry the steam cleaner by the handle.
11. Turn off all controls before unplugging.
12. Steam cleaner must be level and on the floor during use.
13. Do not use an extension cord.
14. Do not attempt to remove blockages with sharp objects as they may cause damage.
15. Store indoors, put away after use to prevent tripping accidents.
16. Using improper voltage may result in damage to the steam cleaner and possible injury to the user. The correct voltage is listed on the label.
17. Drain water tank prior to shipping, transporting.
18. A hazard may occur if the steam cleaner runs over the power supply cord.
19. Accessories become hot during use - allow them to cool down before handling.
20. Never immerse the steam cleaner in water or other liquids.
21. Keep the steam cleaner away from rain and moisture. The steam cleaner is not suitable for outdoor use around water.
22. Only use the steam cleaner in containers / pools that are not filled with water or other liquids.
23. Do not operate the steam cleaner without water in the tank. Always top off with water when needed.
24. Only use distilled water. Using hard water can cause calcium or mineral build up and void the warranty.
25. Never use additives such as perfumes, stain removers, or other chemicals in the water tank as they will void the warranty, cause permanent damage, and be dangerous.
26. Always remove the main plug from the socket and allow the steam cleaner to cool down completely before storage.
27. Do not overfill the tank. Do not exceed the maximum filling level. Please use the funnel included.
28. Make sure the water tank cap is fully secured before use.
29. Empty the water tank if stored (See cleaning and storage).
30. Do not touch any hot areas on the steam cleaner. It is normal for the steam cleaner to heat up during operation.
31. Do not use the steam cleaner to treat any items of clothing that are still being worn on the body.
32. The force and heat of the steam may have an adverse effect on some materials. Always check whether a surface is suitable for treatment with the steam cleaner by carrying out a test beforehand on a concealed area.
33. Always include these operating instructions if passing the steam cleaner on to a third party.
34. Never aim the steam cleaner at people, animals or plants (risk of scalding)! Do not aim the steam cleaner at electrical systems.
35. Do not leave the steam cleaner on and unattended. Always switch the steam cleaner off and remove plug from wall outlet when unattended.
36. The steam cleaner is fitted with a thermostat and a thermal cut-out as protection against overheating.

PARTS OVERVIEW



PARTS LIST

- 1 Funnel
- 2 Mesh tote basket
- 3 Steam gun with hose and connector
- 4 Accessory tool adapter
- 5 Jet nozzle attachment x 2
- 6 Detail scraper x 2
- 7 Nylon brush grout x 4
- 8 Nylon brush medium x 4
- 9 Nylon brush large x 4
- 10 Metal brush small brass x 4
- 11 Metal brush large brass x 4
- 12 Metal brush large stainless steel x 4
- 13 Cotton cover x 4
- 14 Large elbow adapter
- 15 Floor head with bristles
- 16 Floor head smooth surface
- 17 Triangle corner brush
- 18 Steam cleaner
- 19 Extension tubes x 2
- 20 Smooth surface squeegee

- 21 Detail jet tool
- 22 Bed bug / fabric tool
- 23 Micro fiber floor pad x 4
- 24 Accessory storage bag
- 25 Replacement o-ring set
- 26 Assembly screws & tools (not shown)

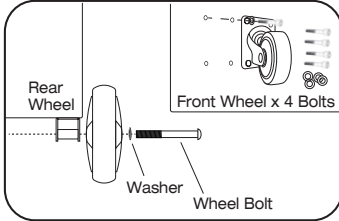
TECHNICAL SPECIFICATIONS

Model: MR-1000 Forza
 Power supply: 120V 60HZ
 Heating element: 1900W - 15AMP
 Steam Pressure: 6BAR - 90PSI PEAK
 Tank capacity: 8LTR - 2.1GAL
 Boiler capacity: 4LTR - 1.06 GAL
 Heating time: 15-20 MIN.
 Boiler temp: 160C - 320F
 Steam temp at tip: 140C - 284F PEAK
 Power cord length: 25'
 Steam hose length: 8'
 Gross weight: 28.4 KG - 62LBS

GETTING STARTED

Once unpacked the items that need to be installed are the front & rear wheels, storage basket with upright handles, front carry handle and cord hooks. All the necessary tools and hardware are included to install these items.

Fig.1

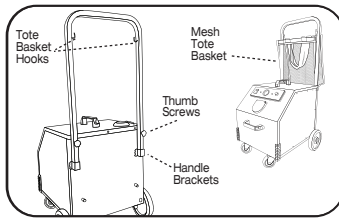


FRONT & REAR WHEEL INSTALLATION

Install the front wheels using the supplied tool along with the supplied wheel bolts, and washers. There are 4 bolts and 4 washers per wheel. (Fig.1)

Install the rear wheels using the supplied tool along with the supplied wheel bolts, and washers. There is one bolt and one washer per wheel. The rear wheel bolt threads into the wheel mount. (Fig.1)

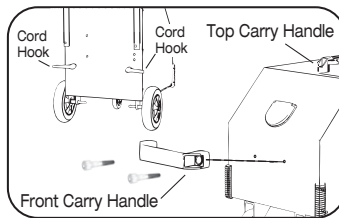
Fig.2



BASKET & HANDLE

The mesh tote basket is used for parts and accessories and has two large carry handles so items can be carried separate from the machine. There are also small hoops located on the carry basket to hang on the U shape handle. Slid the hooks located on the U shape handle through the small hoops on the mesh tote basket to hang. The U shape handle installs to the rear of the machine by sliding into the brackets located on the rear of the machine housing and then attaches to the machine using the supplied thumb screws. (Fig.2)

Fig.3



CARRY HANDLES & CORD HOOKS

Attach the carry handles using the two supplied bolts for each handle, then tighten with the supplied Allen tool. The cord hooks screw onto the studs located on the back of the machine. Push inward to tighten the cord hooks. The cord hooks rotate by pulling outward from the steamer then twisting to rotate. Use this rotate function to easily remove the power cord and to position the hooks for cord storage. Use the Velcro cord strap to secure the cord during transport. (Fig.3)

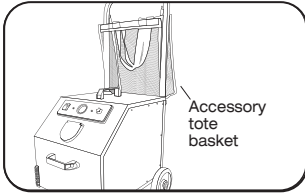
⚠ NOTE: At first start up and when refilling the cold water tank when empty you will hear the pump fill the boiler from the cold water tank. Once the pump is running hold the steam gun trigger down for 15-20 seconds to release the air trapped in the boiler.

⚠ NOTE: Vapamore cannot be held responsible for damage to objects, materials, people, animals or plants that occurs due to unsuitable use of hot steam or due to improper use of the appliance.

ACCESSORIES AND TOOLS

⚠ IMPORTANT: Never operate machine without water in the main tank.

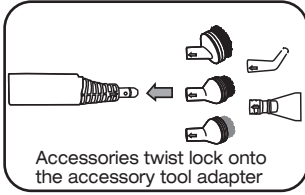
Fig.1



ACCESSORIES

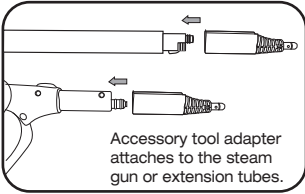
The MR-1000 Forza includes a mesh tote basket and mesh storage bag to carry parts and accessories. The mesh tote basket can be removed from the hooks on the machine handle. This tote basket includes large carry stapes so you can carry parts and accessories separate from the machine. The handle can also be easily removed to make transport or storage easy. (Fig.1)

Fig.2



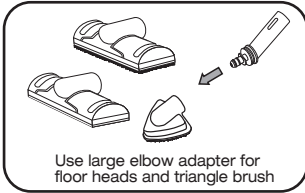
The accessory tool adaptor (#4 on parts overview page) is required when using the jet nozzle attachment, detail scraper, and all round detail brushes (#5-12 on parts overview page). Align the accessory with the arrow on the accessory tool adaptor and twist to lock into place. The accessory tool adaptor can be used directly on the steam gun or can be used with the extension tubes. (Fig.2 and 3)

Fig.3



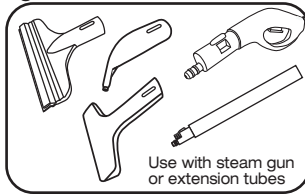
The large elbow adaptor (#14 on parts overview page) is required when using the floor heads or triangle corner brush (#15-17 on parts overview page). With the large elbow adapter facing down, insert into the floor heads or triangle brush until completely inserted then rotate up. The adapter will only insert when facing down and then locks into position and allows the adapter to rotate when in use. The large elbow adapter can be used directly on the steam gun or can be used with the extension tubes. (Fig.4)

Fig.4



The smooth surface squeegee, detail jet tool and the bed bug / fabric tool (20-22 on parts overview page) can be connected directly to the steam gun or the extension tubes. (Fig.5)

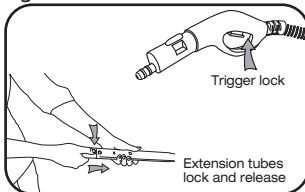
Fig.5



STEAM GUN / EXTENSION TUBES

The steam gun connects to the steam socket located on the front panel of the machine. Flip the dust cover open and push the hose connector firmly into the socket until both tabs click into place. Remove the steam hose by pressing in both release tabs while pulling out.

Fig.6



The steam gun has a trigger (ON) lock located just behind the trigger. This lock can be used for continuous steam without having to hold the trigger. To set the lock, push down the trigger, then while the trigger is down slide the lock to hold the trigger.

Extension tubes can be used for floors or difficult to reach areas. The extension tubes push and lock into place on the steam gun. (Fig.6)

FILLING & OPERATION

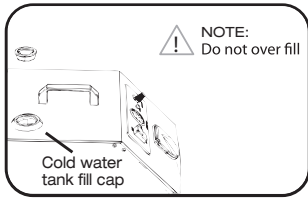
GENERAL FUNCTION: The MR-1000 Forza is a continuous flow steamer that uses a cold water tank with a capacity of 4.2 ltr. that fills the boiler tank as needed to create steam. When first turned on, and during operation, the boiler will call for water from the cold water tank to maintain steam pressure for continuous flow. Once the cold water tank and boiler reach a low level the yellow “fill” light will light up and an audible beep will sound to let the user know to refill the cold water tank. The boiler cut off is set to 6 bar (just over 90 psi). The steam pressure will fluctuate as the steamer is being used and the boiler cycles on and off during use.

⚠ IMPORTANT: Only fill with distilled water without additives of any kind, such as perfumes or cleaning agents. Using additives of any kind will void the warranty.

⚠ IMPORTANT: Only fill with distilled water. Using “hard” mineral heavy water will clog internal components and can cause failure to internal parts and void the warranty.

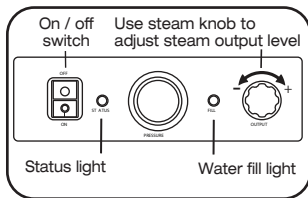
⚠ IMPORTANT: The fill neck of the cold water tank has a screen in place to help prevent debris from entering the steamers internal components. Never fill the cold water tank without this screen in place. Failure to do so will void the warranty.

Fig.1



To fill the cold water tank, remove the rubber tank cap located on the top of the machine and using the supplied funnel, fill the tank to 4.2 ltr. If filling without measuring, fill to the mid-level of the fill neck screen. (Fig.1)

Fig.2



Make sure the steam gun and hose is plugged into the machine before startup. Plug the machine into a proper wall outlet and switch on. At first start up you will hear the pump fill the boiler from the cold water tank. **Once the pump is running hold the steam gun trigger down for 15-20 seconds to release the air trapped in the boiler.** Once the boiler is full the pump will stop and the red status light will light up showing the boiler is now heating the water. Once the boiler is at operating temperature the status light turns to green indicating the steamer is ready for use. (Initial start up from cold machine is aprox. 15 min) ***The status light will cycle red to green during use as the boiler maintains the temperature.**

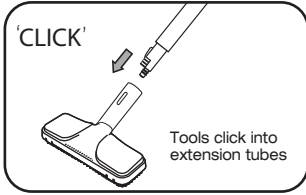
During use the steamer will continuously fill the boiler from the cold water tank. Once the cold water tank and boiler reach a low level the yellow “fill” light will light up and an audible beep will sound to let the user know to refill the cold water tank. Refill the cold water tank, remove the rubber tank cap and fill to the mid level of the fill neck screen. (Fig.2)

The Vapamore MR-1000 Forza has an industry high steam burst pressure of 90 psi. For situations that need a short high pressure steam burst for cleaning, set the the steam output to maximum pressure. For large cleaning areas that need a maintained steady steam flow, it is necessary to reduce the steam output pressure by turning the steam output knob from the full open position, counter clockwise approximately 1/2 revolution. The steam output knob can be turned down further for delicate jobs that require very little pressure such as jewelry, fabrics, furniture, etc. (Fig.2)

OPERATION

ACCESSORIES / FLOOR CLEANING HEAD

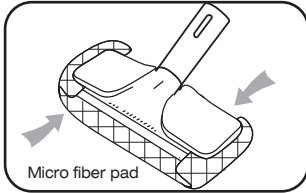
Fig.1



Attach the floor cleaning head to the end of the extension tube (use 1 to 2 tubes as desired). Ensure that the floor cleaning head clicks into place. (Fig.1)

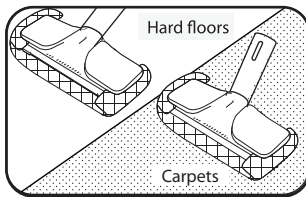
The floor head smooth surface is used with the micro fiber pad for hard surface areas. Place the floor cleaning head on the micro fiber pad and secure the overhanging material under the clips located on each side of the floor cleaning head. (Fig.2)

Fig.2



The floor head smooth surface is ideal for stone, tile, vinyl and wood floors along with cleaning washable walls and any hard surface. It can also be used to sanitize, deodorize, kill allergens, bed bugs and dust mites. Attach the micro fiber pad to allow the floor cleaning head to glide when using on carpet. (Fig.3)

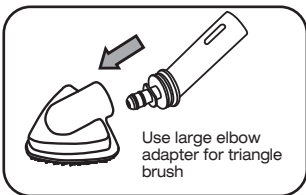
Fig.3



The floor head with bristles can be used on textured floors, cement or tile along with any uneven surface or where extra scrubbing strength is needed. **(with all bristle or brush tools, let the steam do the work with just light pressure applied to the brush)**

TRIANGLE CORNER BRUSH

Fig.4

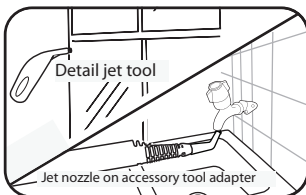


The triangle corner brush can be used on upholstery, carpets, and furniture along with textured floors, cement or tile along with any uneven surface or where extra scrubbing strength is needed. (Fig.4)

(with all bristle or brush tools, let the steam do the work with just light pressure applied to the brush)

DETAIL JET TOOL / JET NOZZLE

Fig.5

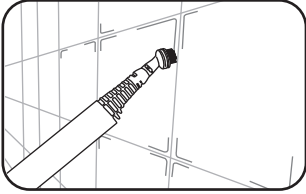


The detail jet tool can be attached directly to the steam gun or to any of the extension tubes. The jet nozzle attachment is used with the accessory tool adapter.

These tools are great for removing soap scum in the bath, shower, and faucets. Also for cleaning tight areas such as toilet seat hinges where high pressure steam can reach and blow out dirt and debris. These tools are most effective when applied direct to the surface being cleaned. The steam temperature will condense and cool within 1" of the tool tip. (Fig.5)

OPERATION

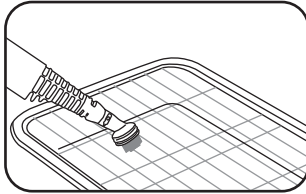
Fig.1



BRUSHES

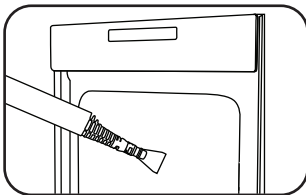
There are 6 brush types supplied with the Vapamore MR-1000 Forza. The brushes attach to the accessory tool adapter by aligning the arrows and twisting to lock. Suggested uses (Metal brushes), Oven grills, BBQ grates, cement stains, machinery, and metal surfaces. (Nylon medium duty and large nylon brush), used for more sensitive materials such as blinds, carpet, furniture, air vents, shoe scuffs, soap scum. (Nylon grout brush), this brush is used for harder less sensitive areas such as grout lines on tile floors, stone, cement, and machinery.

Fig.2



⚠ IMPORTANT : With all brushes it is important to not apply excessive pressure or force. This can cause failure of the detail adaptor or related parts. When using the brushes let the steam do the work and the brush to help agitate the stain or area being cleaned. (Fig.1/2)

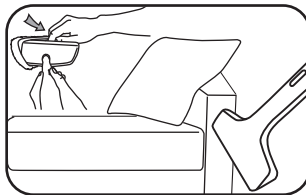
Fig.3



SCRAPER TOOL

The scraper tool can be used to defrost freezers, on oven walls and cook top surfaces to remove stuck on food. This tool is also good for removing wall paper, paint and shelf paper and gum. (Fig.3)

Fig.4



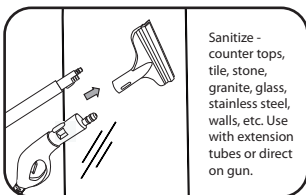
BED BUG / FABRIC TOOL

Start by installing the supplied cotton cover on the Bed bug / fabric tool. Now this tool can be used for steaming and sanitizing along with eliminating odors in garments, fabrics, furniture, curtains, drapes, etc. (Fig.4)

Bed bugs, allergens and mold:

Use this tool on bedding, pillows, and furniture by applying light pressure and slowly passing it along the surface to kill Bedbugs, dust mites and other allergens. (See bed bug - dust mite - allergens page for details) (Fig.4)

Fig.5



Sanitize -
counter tops,
tile, stone,
granite, glass,
stainless steel,
walls, etc. Use
with extension
tubes or direct
on gun.

SMOOTH SURFACE SQUEEGEE TOOL

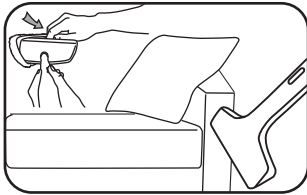
Using the smooth surface squeegee tool is great for sanitizing kitchen and bathroom counter tops chemical free along with smooth surfaces such as stone, granite, wood, glass, tile and stainless steel. (Fig.5)

BEDBUG - DUST MITES - ALLERGENS

WHY USE STEAM?

The Vapamore MR-1000 Forza produces steam with an output temperature between 210° to 240° degrees. Pests such as bedbugs, dust mites and other allergens along with their eggs are killed on contact at a temperature of 180° degrees. Using steam is an extremely effective and chemical free way to kill these pest along with E. Coli, Salmonella, H1N1 and other bacteria or viruses without leaving any harmful chemical residue behind. The tools supplied with the Vapamore MR-1000 Forza allow you to treat all areas where these pests can hide such as bedding, sofas, furniture, pillows, carpet, cracks and crevices that are ideal hiding places for pests.

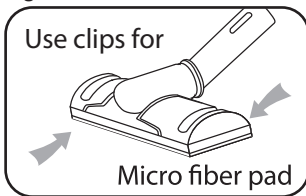
Fig.1



BEDDING / FURNITURE

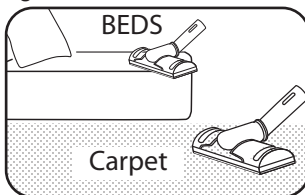
The bed bug / fabric tool with cotton cover is ideal for treating bedding, furniture, pillows, and carpet areas around bed posts and base boards. Start by installing the supplied cotton cover on the clothes - fabric / smooth surface tool. Apply light consistent pressure and slowly pass it along the surface (1" per second) to insure the area being treated has a chance to come to full temperature killing pests and their eggs. (Fig.1)

Fig.2



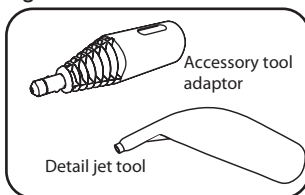
The floor cleaning head with micro fiber cover is also great for treating large surface areas such as bedding, furniture, and carpet areas. Start by installing the supplied micro fiber cover on the floor cleaning head. The micro fiber cover thermal core maintains full temperature during use and allows the floor cleaning head to glide over fabric or carpet. (Fig.2)

Fig.3



Apply light consistent pressure and slowly pass it along the surface (1" per second) to ensure the area being treated has a chance to come to full temperature, thereby killing pests and their eggs. (Fig.3)

Fig. 4



The accessory tool adaptor or the detail jet tool can be used on their own. These tools are great for cracks and crevices. Make sure to concentrate the steam directly on the area to be treated with as minimal distance as possible. The steam will condense and cool off and will not kill pests and their eggs if the jet tip is not directly on the surface being treated.

The accessory tool adaptor or the detail jet tool can be attached directly to the steam gun or to any of the extension tubes. (Fig.4)

LEANING /STORAGE

CLEANING / MAINTENANCE

Always ensure before cleaning or maintaining the Vapamore MR-1000 Forza that it is switched off and unplugged from the wall outlet.

Only clean the outer surface with a water moistened cloth. Do not use any cleaning agents, abrasives or alcohol since they may damage the housing finish.

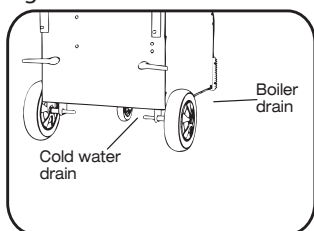
Clean the cold water tank fill screen at least once a quarter (every 3 months) depending on frequency of use to be sure there is no trapped debris in the screen. Remove the screen by pulling up and out of the fill neck. Wash the screen under running water then replace.

⚠ IMPORTANT: Never fill the cold water tank without this screen in place. Failure to do so can allow debris to enter the system and void the warranty.

The included micro fiber cover and cotton cover can be machine washed using normal detergents and wash cycle.

STORAGE / TRANSPORTING / SHIPPING

Fig.1



The cold water tank and main boiler tank should be emptied before storing for any extended period of time (30 days or more) or every 3 months of use to help remove any debris that may have collected in the tanks. Make sure the steamer is unplugged and completely cooled down before emptying the tanks. The cold water tank has a drain located on the underside closest to the right rear wheel. Remove the drain cap to drain the cold water tank then replace and tighten the cap. Do not overtighten the cap

as you may damage the seal. The boiler drain is located on the underside in the center of the steamer. The steamer **MUST** be 100% cooled down and have no pressure stored in the tank to remove this cap. Remove the drain cap to drain the boiler then replace and tighten the cap. Do not overtighten the cap as you may damage the seal. (Fig.1)

⚠ IMPORTANT: Never ship or transport the machine with water in the cold water tank. The cold water tank **MUST be completely emptied prior to shipping or transporting the machine. Failure to do so can cause water to enter the machines internal parts and void the warranty.**

ACCESSORIES

Make sure all the o-rings are in place on the accessory tools and adapters. A silicon lube can be used on these o-rings to help maintain a long use life.

Parts, extension tubes and accessories can be stored in the supplied accessory storage bag and the storage basket located on the back of the steamer. The steam gun and hose can remain plugged into the steamer and also be stored in the storage basket.

TIPS

APPLICATION	STEAM VOLUME	ATTACHMENT	TECHNIQUE
FLOORS / CHEMICAL FREE CLEANING WITH NO RESIDUE LEFT BEHIND			
Vinyl Tile Or Vinyl Sheet	Medium - High	Floor Cleaning Head + Micro fiber + Extension Tubes + Nylon Brush.	Sweep or vacuum first. Steam mop with floor cleaning head and micro fiber cover. Corners and baseboards with nylon brush.
Stone Tile, Slate, Ceramic Tile, Grout	High	Floor Cleaning Head + Micro Fiber + Extension Tubes + Nylon Brush + Grout Brush + Nylon Brush Jet Nozzle	Sweep or vacuum first. Steam mop with floor cleaning head, heavy stains use without micro fiber cover. Corners and baseboards with nylon brush. Grout lines use grout brush and / or jet nozzle. Finish with floor cleaning head / micro fiber cover.
Smooth Surface Concrete	High	Floor Cleaning Head + Micro Fiber + Extension Tubes + Grout Brush + Nylon Brush + Metal Brush + Jet Nozzle	Sweep or vacuum first. Steam mop with floor cleaning head, heavy stains use without micro fiber cover. Corners and baseboards with nylon brush. Joint lines use grout or metal brush and / or jet nozzle. Finish with floor cleaning head / micro fiber.
Hardwood	Low - Medium	Floor Cleaning Head + Micro Fiber + Extension Tubes	Sweep or vacuum first. Steam mop with floor cleaning head and micro fiber cover.
CARPETS / SPOT TREATMENT			
Wall To Wall, Rugs, Spot Care	High	Nylon Brush + Jet Nozzle + Paper Or White Cotton Towel	Vacuum area first then steam using brush or jet. Use towels to blot stain away. Chemical cleaner can be used prior to steam treatment.
CARPETS / DEOTERIZE + KILL BEDBUGS - DUST MITES AND ALLERGENS			
Wall To Wall, Rugs	High	Floor Cleaning Head + Extension tubes + Micro Fiber + Jet Nozzle	Vacuum area first then steam using floor cleaning head with micro fiber cover. Pass slowly over area to allow heat to kill pests. Use jet nozzle for corners and cracks.
WALLS, CEILINGS			
Painted, Wood Paneling, Wallpaper	Low - Medium	Floor Cleaning Head + Extension tubes + Micro Fiber + Nylon Brush + Clothes / Fabric tool with cotton cover.	Painted, wood paneling, wallpaper walls are heat sensitive. Always test small area first and be careful not to over heat finish. Use Floor Cleaning head with micro fiber cover or clothes steamer with cotton cover. Use nylon brush for corners and stains.
Wallpaper Removal	High	Nylon Brush, Jet Nozzle, Extension Tubes + Smooth Surface Tool + Scraper	Use at full power to soften glue and remove wallpaper. Wallpaper stripper can be applied first.
Air Vents	Medium -High	Nylon Brush, Jet Nozzle, Extension Tubes, Cotton Towel	Clean using brush and jet tip. Wipe down with clean cotton towel.
UPHOLSTERY / SPOT TREATMENT			
Vinyl, Synthetic, Cotton	Medium - High	Nylon Brush, Jet Nozzle, Clothes Steamer, Cotton Cover, Cotton Towel	Test a small area first. Some synthetic materials will not handle high heat. Use nylon brush with soft pressure for larger stains and jet tip for small stains. Blot with cotton towel. Use clothes steamer with cotton cloth to go over all surfaces to deoterize.
Leather	Low	Clothes Steamer, Cotton Cover, Cotton Towel	Test a small area first. Steam over stained area and then blot with cotton towel. Use clothes steamer with cotton cloth to go over all surfaces to deoterize.
UPHOLSTERY / KILL BEDBUGS - DUST MITES AND ALLERGENS			
Vinyl, Synthetic, Cotton	Medium - High	Jet Nozzle, Clothes Steamer, Cotton Cover	Test a small area first. Some synthetic materials will not handle high heat. Use clothes steamer with cotton cover and slowly pass over area to allow heat to kill pests. Use jet nozzle for cracks and corners.

TIPS

APPLICATION	STEAM VOLUME	ATTACHMENT	TECHNIQUE
WINDOW BLINDS			
Levolor, Venetian, Horizontal, Vertical	Low-Medium	Nylon Brush, Jet Nozzle, Detail Nozzle, Extension Tubes, Cotton Towel	Dust area first. Thin plastic blinds may not be able to handle heat from the steam. Test a small area first. Use jet or detail nozzle from 4" away. Wipe off with cotton towel.
GLASS			
Windows, Mirrors	Medium	Smooth Surface Squeegee, Extension Tubes, Nylon Brush, Paper Towels	Pre-steam glass from 6" away to heat glass. Use brush for edges and bases. Finish with window cleaner squeegee. Do not use if temperature is under 32 degrees to prevent cracking.
Window Screens, Window Frames	Medium -High	Detail Nozzle, Nylon Brush, Extension Tubes	Steam area with detail nozzle. Use brush for edges and corners.
KITCHENS			
Stove Tops, Ovens	Medium - High	Nylon Brush, Brass Brush, Extension Tubes, Paper towels	Use nylon brush over all surfaces and brass brush for interior oven grates. Wipe down with paper towels
Small Appliances	Medium	Nylon Brush, Detail Nozzle, Paper towels	Use brush over all areas and detail nozzle for small corners and seems. Wipe down with paper towels.
Sinks, Faucets, Drains	Medium - High	Nylon Brush, Detail Nozzle, Paper towels	Use brush over all areas and detail nozzle for small corners and seems. Wipe down with paper towels.
Counter Tops	Low- Medium	Smooth Surface Squeegee, Nylon Brush, Detail Nozzle, Paper towels	Use brush over all areas and detail nozzle for small corners and seems. Use smooth surace squeegee to sanitize counter tops by slowly passing over area then wipe area with paper towel for chemical free cleaning.
BATHROOM			
<small>(NOTE: HARD WATER AND CALCIUM STAINS CAN ONLY BE REMOVED WITH CHEMICALS.)</small>			
Tile, Grout	Medium - High	Floor Cleaning Head + Micro Fiber + Extension Tubes + Grout Brush + Jet Nozzle	Sweep or vacuun first. Steam mop with floor cleaning head, heavy stains use without cotton cover. Corners and baseboards with nylon brush. Grout lines use grout brush and / or jet nozzle .Finish with floor cleaning head with micro fiber.
Porcelain Toilets, Chrome Fixtures	Medium - High	Nylon Brush, Detail Nozzle, Paper towels	Use brush over all areas and detail nozzle for small corners, hinges, and seems. Wipe down with paper towels.
Shower, Tubs, Doors	Medium	Nylon Brush, Detail Nozzle, Extension Tubes, Paper towels	Use brush over all areas and detail nozzle for small corners and seems. Wipe down with paper towels.
AUTO, MOTORCYCLE, MARINE			
Interior Areas	Medium - High	Nylon Brush, Jet Nozzle, Clothes Steamer, Cotton Cover, Cotton Towel	Test a small area first. Some synthetic materials will not handle high heat. Use nylon brush with soft pressure for larger stains and jet tip for small stains. Blot with cotton towel.
Detailing, Exterior, Engine	Medium - High	Nylon Brush, Detail Nozzle, Jet Nozzle	Use brush over all areas and detail nozzle for small detail areas.