



Installation Instruction

2013-2018 Subaru XV Crosstrek

Part Identification Number: 1331

Mounting Bracket To Vehicle Hardware:

Quantity	Hardware	Quantity	Hardware
2	Mounting Bracket (Driver/Passenger Side)	2	Bolt
		2	Nut

Mounting Bumper Guard To Mounting Bracket Hardware:

Quantity	Hardware	Quantity	Hardware
1	A-Bar Bumper Guard		
4	Bolt	4	Nuts
8	Washer	4	Spring Washer

Note:

- Professional installation is **HIGHLY** recommended
- Review and understand the installation hardware and procedure before beginning
- Periodically check the tightness and alignment of the parts for proper adjustment after completion

Diagram 1.A: Refer to the diagram below when fastening nut to bolt. For fastening procedures that does not require a bracket or bumper, remember the concept demonstrated. The spring should be in between the washer and nut.



Note: Do NOT tighten the nuts until all the parts are fastened and adjusted.

Step 1: Remove/detach the plastic under shield skid to gain full access to the vehicle chassis frame. The orange circle on the image below indicates the part of the chassis frame where the mounting bracket will be mounted on to. (Driver side shown)



IMAGE 1

Step 2: Locate the driver side mounting bracket and fasten it on to the chassis frame. Fasten with bolt and nut, use washer and spring washer if necessary.



Driver side chassis shown. (Same part shown from IMAGE 1.)

Notice how the curves on the mounting bracket align to the vehicle's chassis frame.

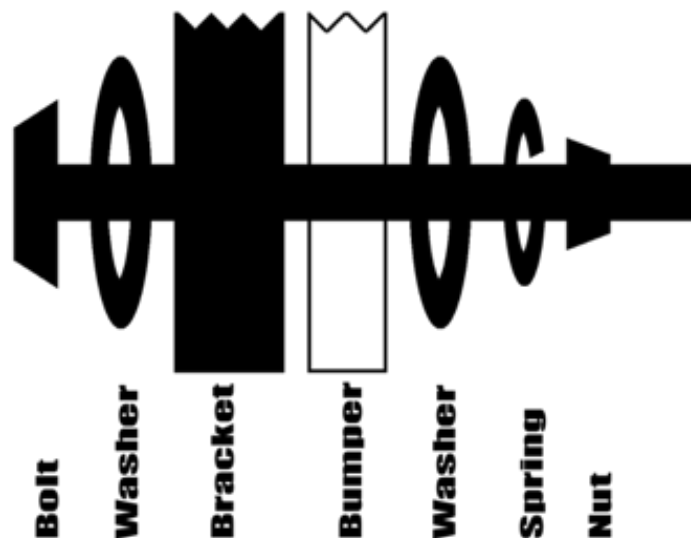
IMAGE 2 - Inner side shown

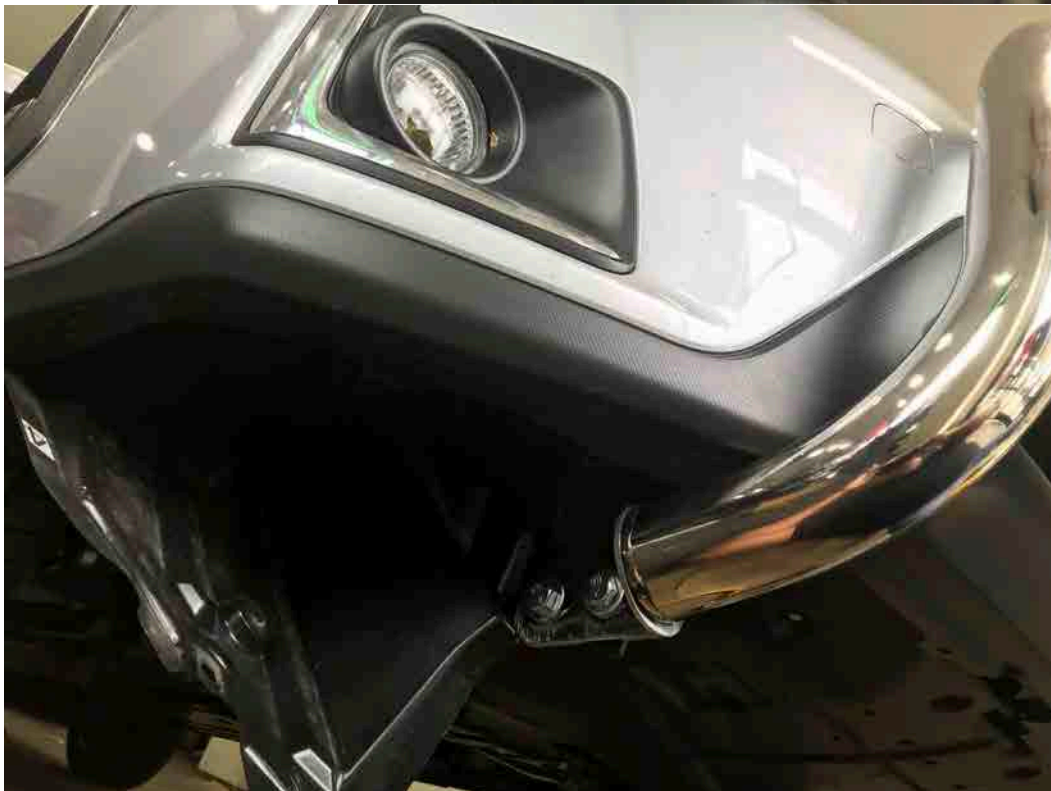
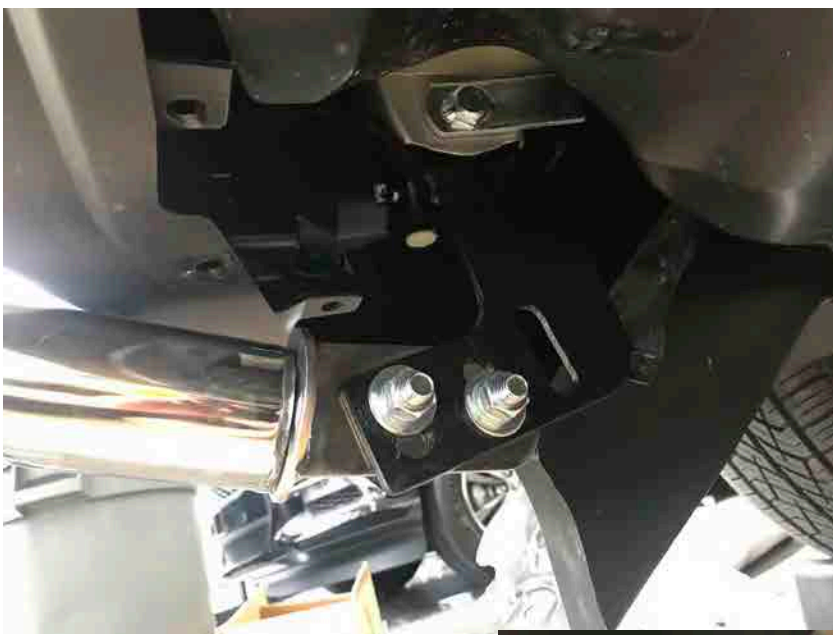
Step 2 Continuation...



IMAGE 3 – Outer side shown

- Step 3: Once the driver side mounting bracket is fastened, repeat the concept-procedure on the passenger side.
- Step 4: Mount the bumper guard onto the mounting bracket following Diagram 1.A. It does not matter if the bumper guard is mounted on the inner or outer side of the mounting bracket. If necessary, a clamp may be needed to hold the bracket and bumper together while it is being fastened.
- Step 5: When all the parts are fastened, adjust-balance-secure all the bolts and nuts.
- Step 6: Complete the installation by trimming the plastic-under-shield-skid-plate where it interferes with the mounting bracket before attaching it back on to the vehicle.





Learn more about grille guards and bull bars we have.