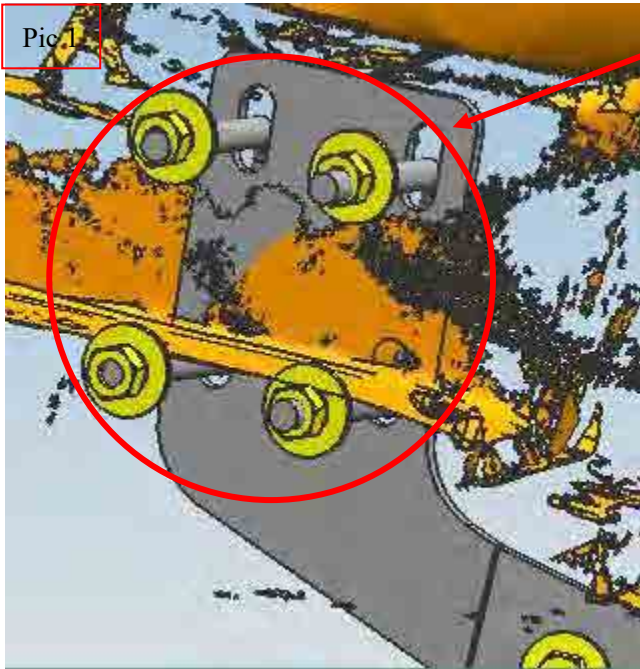




## INSTALLATION PROCEDURES

Step 1: Refer to the Part list to check if all the hardware are included.

Step 2: Distinguish the left and right according to the print *R* and *L*. It is easier for your installation by putting the bracket with its fastening pieces together.



Pic 1

Install the brackets with U Bolt and relevant hardware.



Step 3: Install the side bar on the brackets and tighten up hardware after adjusting the brackets.



Pic 2



Step 4: Complete the installation.

**Disclaimer:** Caused due to improper installation initiates or some related problem and losses, are beyond our company's quality assurance.





