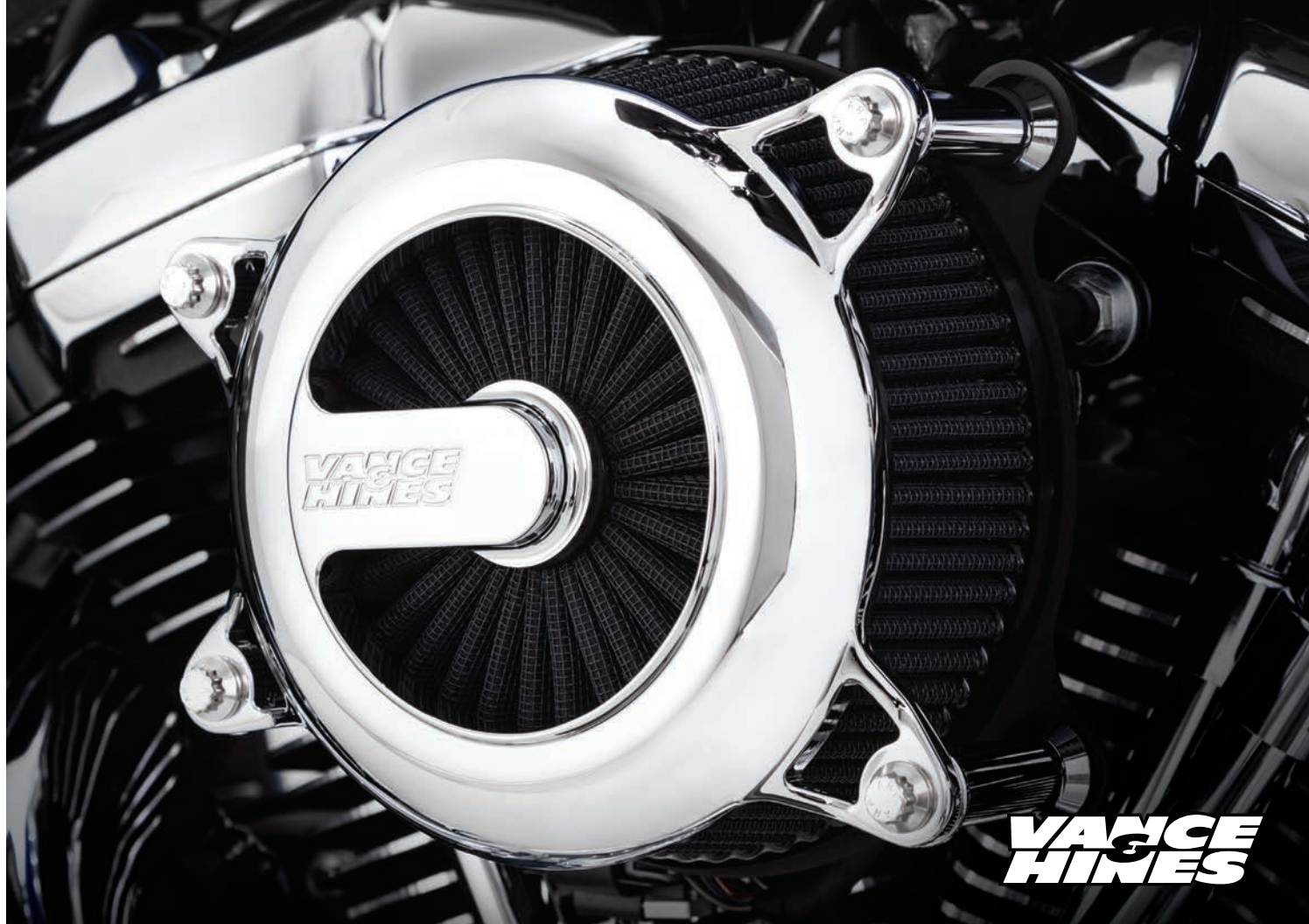


V-TWIN PRODUCTS

EXHAUST • FUEL MANAGEMENT • AIR INTAKE



**VANCE
HINES**



4

FEATURED PRODUCTS

The latest products and innovations we are proud to introduce into the Vance & Hines lineup.

32

SLIP-ONS

For those looking to increase power and sound without breaking the bank, slip-on mufflers are an excellent choice.

46

FULL SYSTEMS

Full exhaust systems push the envelope of performance a step further by increasing flow, while giving the motorcycle a custom appearance.

55

AIR INTAKE SYSTEMS

In order to take full advantage of a performance exhaust system, the use of a high-flow air intake system is a must.

60

RACESHOP COMPONENTS

The highest levels of competition require components capable of withstanding the abuse of racing. Raceshop Components bring the products Vance & Hines racers use to the everyday rider.

62

ACCESSORIES

Items that may be needed to further fulfill consumer needs, such as header wrap tape to increase rider comfort.

**VANCE
& HINES**





1. CONNECT



LIVE SENSOR DATA

- Real Time Sensor Read out Via Bluetooth From Your Smart Phone / Tablet
- Read and Clear Diagnostic Trouble Codes
- RPM, Engine Temperature, Fuel Economy, ETC.*

(SMART PHONE NOT INCLUDED)

The Fuelpak FP3 has fast become the best selling ECU tuner for Harley-Davidson motorcycles in the world. That's because the FP3 gives you the power to control your motorcycle right through your smartphone. Map optimizations such as throttle progressivity to improve responsiveness and in-app control over popping on deceleration let you dial in your ride to suit your style. The ability to read and clear diagnostic trouble codes allows you to keep a finger on the pulse of your machine. All backed up by world-class customer service features that allow Vance & Hines to remotely assist with your riding experience.



2. TUNE



3. RIDE



AUTOTUNE

- Calibrates Map for Unique Exhaust, Engine Component & Fuel Grade Combinations
- Uses Stock O2 Sensors
- Only Requires 1-2 Hours of Ride Time



2014-2018	FUELPAK FP3 CAN BUS (TOURING)	66005
2007-2013	FUELPAK FP3 J1850 (TOURING) (1)	66007
2011-2018	FUELPAK FP3 CAN BUS (SOFTAIL)	66005
2007-2010	FUELPAK J1850 (SOFTAIL) (2)	66007
2012-2017	FUELPAK FP3 CAN BUS (DYNA)	66005
2007-2011	FUELPAK J1850 (DYNA) (2)	66007
2014-2018	FUELPAK FP3 CAN BUS (SPORTSTER)	66005
2007-2013	FUELPAK FP3 J1850 (SPORTSTER)	66007
2015-2018	FUELPAK FP3 CAN BUS (STREET)	66005

(1) Fits 2009-2013 CVO models

(2) Does not fit CVO models

FOR CLOSED COURSE COMPETITION USE ONLY. NOT INTENDED FOR STREET USE.

* Available sensor readings dependent on year and model.

wanceandhines.com

FUELPACK PRO

Introducing the Fuelpak Pro tuning experience. A complete ecosystem for creating, storing and delivering maps to FP3 users worldwide. The next evolution of Fuelpak will give you the tools you need to map any combination of performance parts and engine upgrades.

BECOME A PRO

THE FUELPACK PRO CLOUD BASED SYSTEM INCLUDES:



Dyno tuning for any combination of performance parts and engine upgrades.



18mm wideband O2 sensor kit for optimal tuning capability & precision.



Comprehensive support from V&H, including in-person training and seminars.



Cloud server network to create, upload, download and edit your own map library.



PC based map editing for point and click access to all critical ECU tables.



Make your custom maps available on our online marketplace to FP3 users worldwide.

COMING SOON!

FOR CLOSED COURSE COMPETITION USE ONLY. NOT INTENDED FOR STREET USE.

A silver Harley-Davidson motorcycle is positioned on a dynamometer in a dark workshop. The motorcycle is the central focus, with its chrome and metallic surfaces catching some light. To the right, a large, dark-colored dynamometer arm with a circular fan-like vent is visible. The background is dark, with a few lights and a grid pattern on a wall. The overall atmosphere is professional and technical.

Fuelpak
PRO

CLOUD BASED TUNING
FOR **PROFESSIONALS**

CAUTION
LOOK UP

HI-OUTPUT SLIP-ONS



Give your Milwaukee-Eight Fat Bob the hot rod rumble to match its hot rod performance with Hi-Output Slip-ons. Stepped, stacked and staggered, these blacked-out slip-ons are right on point for the radically styled Fat Bob.

- Aggressive Deep Tone
- Matte Black Finish
- Laser Engraved Riveted Badges

SOFTAIL

2018	BLACK (1)	46547
2018	QUIET BAFFLE	21841

(1) Fits 2018 Fat Bob models.

FOR CLOSED COURSE COMPETITION USE ONLY. NOT INTENDED FOR STREET USE.



VAN
CECHE
&
HINES
COMPETITION

VAN
CECHE
&
HINES
COMPETITION

HI-OUTPUT SLIP-ON



Give your XG Street or Street Rod the roar it needs for the urban jungle with a Vance & Hines Hi-Output Slip-on. Stepped from 4 to 4-1/2 inches and finished with a fluted machined billet end cap and laser engraved logo badge, the Hi-Output Slip-on sports a sleek blacked-out finish

- Bold Stepped Muffler
- Machined Billet End Cap
- Laser Engraved Logo Badge

STREET

2015-2018	BLACK (1)	47943
2015-2018	QUIET BAFFLE	21841
2017-2018	FENDER ELIMINATOR KIT (2)	16041

(1) Fits 2015-2018 Street 500/750 and 2017-2018 Street Rod

(2) Fits 2017-2018 Street Rod models only

FOR CLOSED COURSE COMPETITION USE ONLY. NOT INTENDED FOR STREET USE.



VANCE
& HINES
COMPETITION



Warning: Do not use this product on a motorcycle with a carburetor.

SHORTSHOTS STAGGERED



An unparalleled value, Shortshots Staggered deliver hot rod sound and performance wrapped in full-length heat shields, at a price rivaling most slip-ons.

- Signature Twin Slash End Treatment
- Full Coverage Heat Shields
- Optional Quiet Baffle Available

SOFTAIL

2018	CHROME (1)(2)	17233
2018	BLACK (1)(2)	47233
2018	CHROME (3)(4)	17235
2018	BLACK (3)(4)	47235
2012-2017	CHROME	17225
2012-2017	BLACK	47225
1986-2011	CHROME (5)	17221
1986-2011	BLACK (5)	47221
1986-2006	CHROME (5)(6)	17209
1986-2018	QUIET BAFFLE	21301
1986-2018	SUPER Q BAFFLE	21912

(1) Fits 2018 Street Bob, Low Rider, Fat Bob, Slim, Deluxe & Heritage Classic Models

(2) Does Not Fit 2018 Fat Boy & Breakout Models

(3) Fits 2018 Fat Boy & Breakout Models

(4) Does Not Fit 2018 Street Bob, Low Rider, Fat Bob, Slim, Deluxe & Heritage Classic Models

(5) Oxygen sensor plug kit (16925) required when used on 1986-2006 models

(6) Original Shortshots

DYNA

2012-2017	CHROME	17227
2012-2017	BLACK	47227
2006-2011	CHROME	17217
2006-2011	BLACK	47217
1991-2005	CHROME	17213
1991-2005	CHROME (7)	17205
1987-1994	CHROME (8)	17207
1991-2017	QUIET BAFFLE	21301
1991-2017	SUPER Q BAFFLE	21912

(7) Original Shortshots (8) Original Shortshots, Fits FXR

SPORTSTER

2014-2018	CHROME	17229
2014-2018	BLACK	47229
2004-2013	CHROME (9)	17219
2004-2013	BLACK (9)	47219
1999-2003	CHROME	17223
1999-2018	QUIET BAFFLE	21301
1999-2018	SUPER Q BAFFLE	21912

(9) Oxygen Sensor Plug Kit (16925) required when used on 2004-2006 models

FOR CLOSED COURSE COMPETITION USE ONLY. NOT INTENDED FOR STREET USE.



BIG RADIUS 2-2



The original game changer, Big Radius 2-into-2 brings together radical custom bike styling with precision quality features like full coverage heat shields and dyno-tuned baffles.

- Custom Bike Styling
- Radius Curved Louvered Baffles
- Full Coverage Heat Shields

TOURING

2017-2018	CHROME	26073
2017-2018	BLACK	46073
2010-2016	CHROME	26057
2009	BLACK (1)	46047
1999-2006	CHROME	26045
1999-2018	QUIET BAFFLE	23081

(1) Fits 2009-2016 Touring using aftermarket wideband sensors

SOFTAIL

2018	CHROME (2)	26077
2018	BLACK (2)	46077
2018	CHROME (3)	26075
2018	BLACK (3)	46075
2013-2017	CHROME (4)	26065
2013-2017	BLACK (4)	46065
2008-2011	CHROME (ROCKER)	26043
1986-2017	CHROME (5)	26069
1986-2017	BLACK (5)	46069
1986-2018	QUIET BAFFLE	23081

(2) Fits 2018 Street Bob, Low Rider, Fat Bob, Slim, Deluxe & Heritage Classic Models (3) Fits 2018 Fat Boy & Breakout Models (4) Fits FXSB Breakout and FXSBSE CVO Breakout (5) Oxygen sensor plug kit (16925) required when used on 1986-2006 models

DYNA

2006-2017	CHROME	26061
2006-2017	BLACK	46061
1991-2005	CHROME	26007
1991-2017	QUIET BAFFLE	23081

SPORTSTER

2014-2018	CHROME	26067
2014-2018	BLACK	46067
2004-2013	CHROME (6)	26055
2004-2013	BLACK (6)	46055

(6) Oxygen Sensor Plug Kit (16925) required when used on 2004-2006 models

FOR CLOSED COURSE COMPETITION USE ONLY. NOT INTENDED FOR STREET USE.





Featuring a distinctive stepped megaphone design, this latest evolution in the Vance & Hines 2-into-1 performance legacy improves performance over its predecessors .

- Broad/Usable Torque Increase
- Stepped Headers, Large Merge Collector
- Quiet and Competition Baffles Available
- 4.5-inch Muffler Body At Exit

TOURING

2017-2018	CHROME	17583
2017-2018	BLACK	47583
2010-2016	CHROME	17559
2010-2016	BLACK	47561
2009	CHROME (1)	17539
1999-2008	CHROME (2)	17557
1999-2008	BLACK (2)	47557
1999-2018	QUIET BAFFLE	21906
1999-2018	COMPETITION BAFFLE	26529

(1) Fits 2009-2016 Touring using aftermarket wideband sensors

(2) Oxygen Sensor Plug Kit (16925) required when used on 1999-2006 models

SOFTAIL

2018	CHROME (3)	17587
2018	BLACK (3)	47587
2018	CHROME (4)	17589
2018	BLACK (4)	47589
2012-2017	CHROME	17571
2012-2017	BLACK	47527
1986-2011	CHROME (5)(6)	17547
1986-2011	BLACK (5)(6)	47547
1986-2017	QUIET BAFFLE	21906
1986-2017	COMPETITION BAFFLE	26529

(3) Fits 2018 Street Bob, Low Rider, Fat Bob, Slim, Deluxe & Heritage Classic Models (4) Fits 2018 Fat Boy & Breakout Models (5) Oxygen sensor plug kit (16925) required when used on 1986-2006 models

(6) Does not fit FXCW Rocker, FXCWC Rocker C or 2009 FXSTSSE Springer Softail

DYNA

2012-2017	CHROME	17569
2012-2017	BLACK	47525
2012-2016	CHROME (5)	17573
2006-2011	CHROME	17551
2006-2011	BLACK	47551
1991-2005	CHROME (6)	17523
1991-2017	QUIET BAFFLE	21906
1991-2017	COMPETITION BAFFLE	26529

(5) Fits Dyna Switchback (6) Pro Pipe HS

FOR CLOSED COURSE COMPETITION USE ONLY. NOT INTENDED FOR STREET USE.



MINI-GRENADES



Lean and mean, Mini-Grenades pack a punch with their signature staggered three-step design finished with race-inspired CNC machined billet end caps. Available in chrome or matte black, Mini-Grenades have a muscular compact stance and an aggressive deep tone resulting in one tough exhaust system for your Harley-Davidson Dyna or Sportster, as well as M8 Softails by mid-2018.

- Aggressive Deep Tone
- Signature Three-Step Design
- CNC Machined Billet End Caps

SOFTAIL

2018	CHROME (1)	16878
2018	BLACK (1)	46878
2018	CHROME (2)	16880
2018	BLACK (2)	46880
2018	QUIET BAFFLE	21947

(1) Fits 2018 Street Bob, Low Rider, Fat Bob, Slim, Deluxe & Heritage Classic Models

(2) Fits 2018 Fat Boy & Breakout Models

DYNA

2006-2017	CHROME	16876
2006-2017	BLACK	46876
2006-2017	QUIET BAFFLE	21947

SPORTSTER

2004-2018	CHROME	16874
2004-2018	BLACK	46874
2004-2018	QUIET BAFFLE	21839

FOR CLOSED COURSE COMPETITION USE ONLY. NOT INTENDED FOR STREET USE.



VAGHECHINI

HI-OUTPUT 2-INTO-1 SHORT



The Hi-Output family expands the line with an aggressively stout 2-into-1. Engineered to be a compact version of our signature stepped megaphone, the Hi-Output 2-into-1 Short is perfect for the rider that demands the performance of a 2-into-1 and the distinctive sound of the Hi-Output.

- Deep, Throaty Note
- CNC Machined Billet End Cap
- Optional Quiet Baffle

SOFTAIL

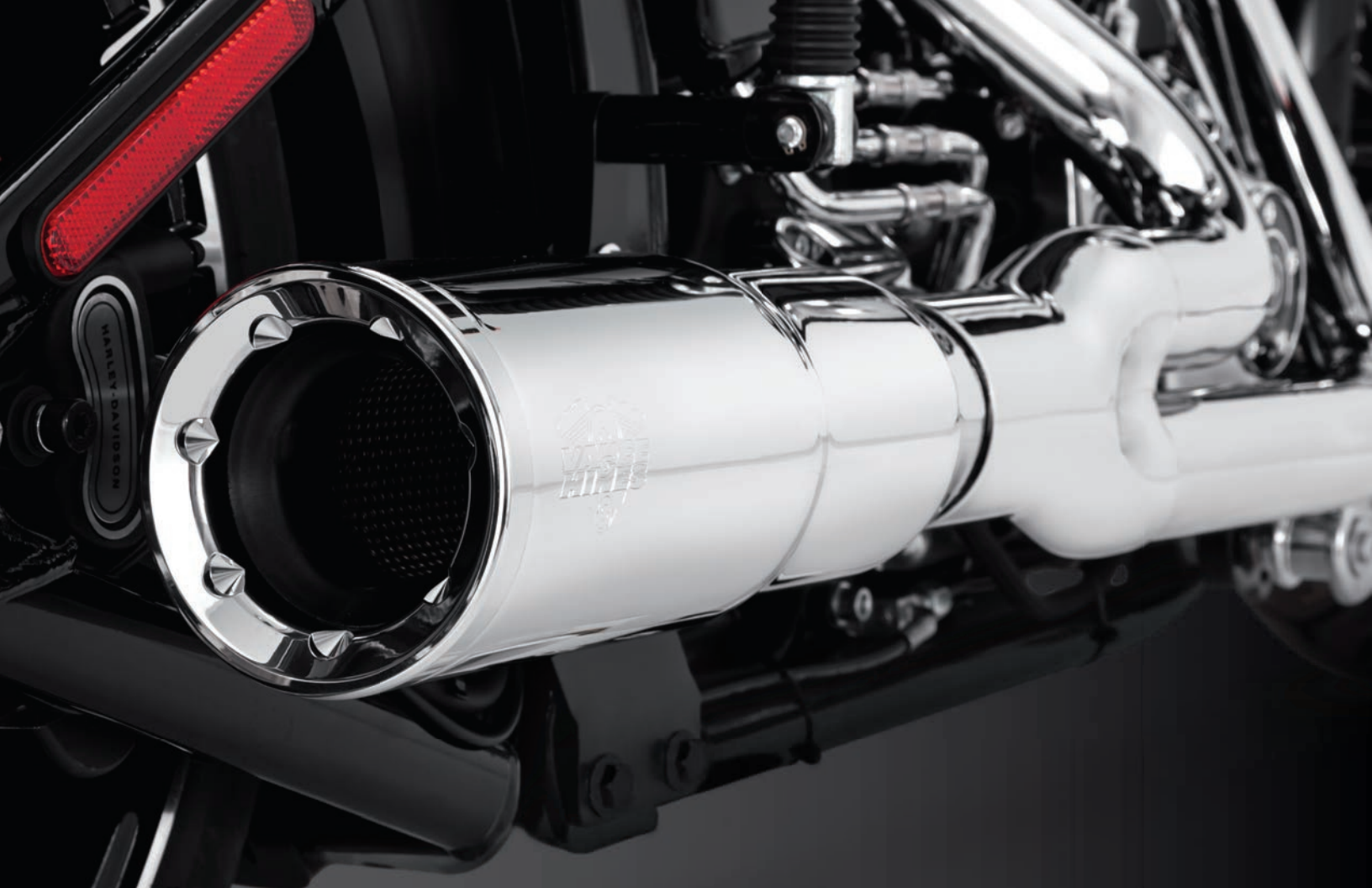
1986-2017	CHROME	16543
1986-2017	BLACK	46543
2013-2017	CHROME (1)	16545
2013-2017	BLACK (1)	46545
1986-2017	QUIET BAFFLE	23086

(1) Fits Breakout and CVO Breakout models

DYNA

2006-2017	CHROME	16541
2006-2017	BLACK	46541
2006-2017	QUIET BAFFLE	23086

FOR CLOSED COURSE COMPETITION USE ONLY. NOT INTENDED FOR STREET USE.



ELIMINATOR 300 SLIP-ONS



SOFTAIL

Eliminator 300 Slip-ons expand the popular Eliminator line to the Milwaukee-Eight powered Softail family. Crafted with precision-machined billet end caps inspired by the Vance & Hines Flat Track Race Team, Eliminator 300s are fine tuned with glass-wrapped acoustic baffles for a sumptuously resonant tone.

- CNC Machined Billet End Caps
- 3-inch Round Muffler Body
- Available in Chrome, Satin Chrome or Wrinkle Black

2018	CHROME (1)	16712
2018	BLACK (1)	46712
2018	CHROME (2)	16716
2018	SATIN CHROME (1)	16722
2018	QUIET INSERT	21947

(1) Fits Street Bob, Lowrider, Slim, Fat boy & Breakout
 (2) Fits Deluxe & Heritage Classic

FOR CLOSED COURSE COMPETITION USE ONLY. NOT INTENDED FOR STREET USE.



TWIN SLASH 3-INCH



Gutsy sound and great value, Twin Slash 3-inch slip-ons bring to life the Milwaukee-Eight engine in the new Softail model line. Featuring full coverage heat shields in either chrome or our new wrinkle black finish to match the factory black heat shields and finished with the signature Vance & Hines twin slash look, these slip-on mufflers can be fitted with either optional quiet or competition baffles.

- Signature Twin Slash End Treatment
- Full Coverage Heat Shields
- Available in Chrome or Wrinkle Black

SOFTAIL

2018	CHROME (1)	16875
2018	BLACK (1)	46875
2018	CHROME (2)	16879
2007-2017	CHROME (3)	16835
2007-2017	CHROME (4)	16841
2007-2017	CHROME (5)	16843
2011-2017	CHROME (6)	16847
2007-2017	BLACK (4)	46841
2007-2017	BLACK (5)	46843
2011-2017	BLACK (6)	46847
2007-2018	QUIET BAFFLE	21899
2007-2018	COMPETITION BAFFLE	21897

(1) Fits Street Bob, Lowrider, Slim, Fat boy & Breakout (2) Fits Deluxe & Heritage Classic
 (3) Fits FXST Standard, FXSTC Custom, FLSTC Heritage Classic, FXSTB Night Train, FXCW Rocker, FXSB Breakout
 (4) Fits FLSTN Deluxe, FLS Slim, FLSTSB Cross Bones (5) Fits FLSTM Fatboy, FLSTFB Fatboy Lo, FXSTD Deuce
 (6) Fits FXS Blackline, 2016-2017 Fatboy/Slim S Models

DYNA

1991-2017	CHROME (7)	16837
2008-2017	CHROME (8)	16845
1991-2017	BLACK (7)	46837
2008-2017	BLACK (8)	46845
1991-2017	QUIET BAFFLE	21899
1991-2017	COMPETITION BAFFLE	21897

(7) Does not fit FXDF Fat Bob, 2010-2017 FXDWG Wide Glide, 2014-2017 FXDL Low Rider or FLD Switchback (8) Fits FXDF Fat Bob, 2010-2017 FXDWG Wide Glide

SPORTSTER

2014-2018	CHROME	16861
2014-2018	BLACK	46861
2004-2013	CHROME	16839
2004-2013	BLACK	46839
2004-2018	QUIET BAFFLE	21899
2004-2018	COMPETITION BAFFLE	21897

FOR CLOSED COURSE COMPETITION USE ONLY. NOT INTENDED FOR STREET USE.





For distinguished touring riders, Monster V's are the slip on mufflers of choice. The new Monster V's are a highly refined design, meticulously executed from the smooth round inlet to the perfectly sculpted V shaped end cap. Monster V's produce deep mellow tones that will make you want to ride another hundred miles. Simply put, these mufflers are ideal for long distance rides. Monster V's comprise a high capacity design, which yield excellent/broad power gains.

- Oversized 5.5-inch V Angular Design
- Full Coverage Heat Shields
- 5.5-inch Machined Billet End Caps

TOURING

2017-2018	CHROME*	16563
2017-2018	BLACK*	46563
1995-2016	CHROME**	16565
1995-2016	BLACK**	46565

* Qualified manufacturer declared replacement part on 2017-2018 Touring models

** Qualified manufacturer declared replacement part on 2009-2016 Touring models

FOR CLOSED COURSE COMPETITION USE ONLY. NOT INTENDED FOR STREET USE.



POWER DUALS



The unique look of the contoured heat shields on the Power Duals head pipes elegantly masks the prowess of the Power Chamber crossover that enhances performance over the stock head pipes.

- Helps Reduce Exhaust Temperatures Up to 250°F
- Full Coverage Heat Shields
- Includes Dual Bung Oxygen Sensor Ports (18mm & 12mm)*

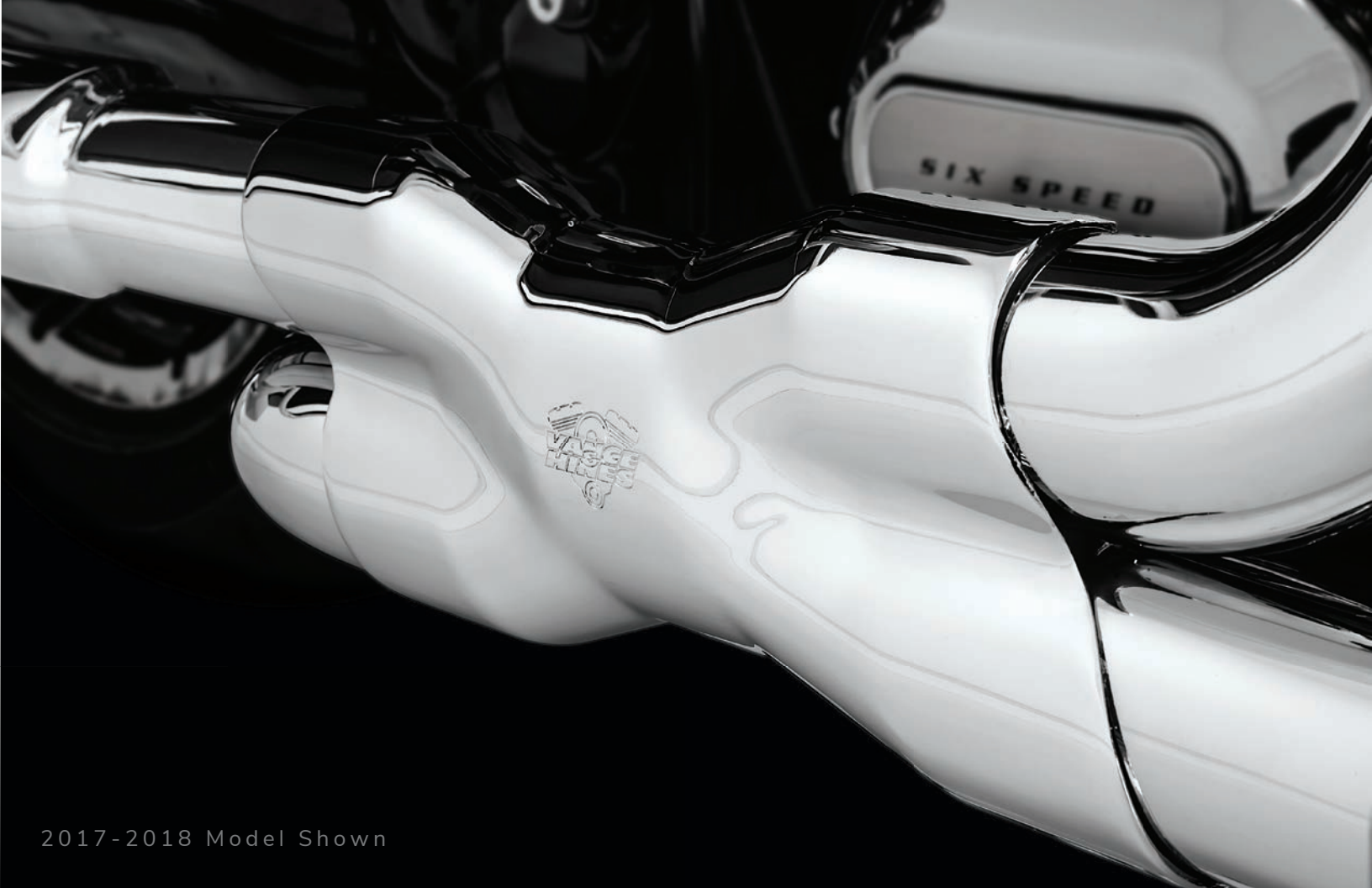
* 18mm ports available for 2009+ models only

TOURING

2017-2018	CHROME (1)	16871
2017-2018	BLACK (1)	46871
2009-2016	CHROME (2)	16832
2009-2016	BLACK (2)	46832

(1) Trike Adaptor Kit (16784 Chrome or 46784 Black) required for use on 2017-2018 Trike models
 (2) Trike Adaptor Kit (16785) required for use on 2009-2016 Trike models

FOR CLOSED COURSE COMPETITION USE ONLY. NOT INTENDED FOR STREET USE.



2017-2018 Model Shown

DRESSER DUALS



Add the sleek look of true dual head pipes with Dresser Duals, complete with full coverage heat shields and available for all Touring models from 1995 to present.

- Classic True Dual Design
- Full Coverage Heat Shields
- Includes Dual Bung Oxygen Sensor Ports (18mm & 12mm)*

* 18mm ports available for 2009+ models only

TOURING

2017-2018	CHROME	17651
2017-2018	BLACK	47651
2009-2016	CHROME (1)	16752
2009-2016	BLACK (1)	46752
1995-2008	CHROME (2)	16799
1995-2008	BLACK (2)	46799

(1) Trike Adaptor Kit (16784 Chrome or 46784 Black) required for use on 2017-2018 Trike models

(2) Trike Adaptor Kit (16785) required for use on 2009-2016 Trike models

FOR CLOSED COURSE COMPETITION USE ONLY. NOT INTENDED FOR STREET USE.



2009-2016 Models



1995-2008 Models



1995-2008 Models

ELIMINATOR 400



Featuring large 4-inch mufflers finished with race-inspired CNC machined billet end caps, Eliminator 400s are tuned to give Harley-Davidson baggers a deep and aggressive roar.

- CNC Machined Billet End Caps
- Large 4-inch Round Muffler Body
- Fits Saddlebags with Extended Skirts
- Optional Quiet Baffles Available

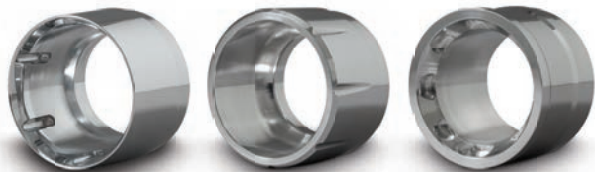
TOURING

2017-2018	CHROME*	16708
2017-2018	BLACK*	16714
2017-2018	CHROME / BLACK TIPS*	46708
1995-2016	CHROME**	16703
1995-2016	BLACK**	46703
1995-2016	CHROME / BLACK TIPS**	16706

* Qualified manufacturer declared replacement part on 2017-2018 Touring models

** Qualified manufacturer declared replacement part on 2009-2016 Touring models

FOR CLOSED COURSE COMPETITION USE ONLY. NOT INTENDED FOR STREET USE.



TITAN

RAIDER

DESTROYER

OVERSIZED 450

SLIP-ONS

TOURING

2017-2018	TITAN CHROME*	16650
2017-2018	TITAN CHROME / BLACK TIPS*	16652
2017-2018	TITAN BLACK*	46650
1995-2016	TITAN CHROME**	16549
1995-2016	TITAN CHROME / BLACK TIPS**	16551
1995-2016	TITAN BLACK**	46549
2017-2018	RAIDER CHROME*	16654
2017-2018	RAIDER CHROME / BLACK TIPS*	16656
2017-2018	RAIDER BLACK *	46650
1995-2016	RAIDER CHROME**	16557
1995-2016	RAIDER CHROME / BLACK TIPS**	16559
1995-2016	RAIDER BLACK**	46557
2017-2018	DESTROYER CHROME*	16658
2017-2018	DESTROYER CHROME / BLACK TIPS*	16670
2017-2018	DESTROYER BLACK*	46658
1995-2016	DESTROYER CHROME**	16553
1995-2016	DESTROYER CHROME / BLACK TIPS**	16555
1995-2016	DESTROYER BLACK**	46553
1995-2018	QUIET BAFFLE	21884

* Qualified manufacturer declared replacement part on 2017-2018 Touring models

** Qualified manufacturer declared replacement part on 2009-2016 Touring models

FOR CLOSED COURSE COMPETITION USE ONLY. NOT INTENDED FOR STREET USE.



The OverSized 450 slip-on line also puts out a big deep-toned rumble thanks to its large fiberglass wrapped 2.5-inch perforated core baffles, which can also be tempered down with optional quiet baffles. Available in all chrome, all black or chrome with black end caps.

- Aggressive Throaty Tone
- Massive 4.5-inch Round Mufflers
- CNC Machined Billet End Caps
- Optional Quiet Baffles Available



The Hi-Output Slip-ons' design is singularly focused to yield maximum horsepower and features a deep race-inspired exhaust note.

- Aggressive Stepped Styling
- Fits Saddlebags with Extended Skirts
- Optional Quiet Insert Available

TOURING

2017-2018	CHROME*	16463
2017-2018	BLACK*	46463
1995-2016	CHROME**	16455
1995-2016	BLACK **	46759
1995-2018	QUIET BAFFLE	21905

* Qualified manufacturer declared replacement part on 2017-2018 Touring models

** Qualified manufacturer declared replacement part on 2009-2016 Touring models

FOR CLOSED COURSE COMPETITION USE ONLY. NOT INTENDED FOR STREET USE.

MONSTER ROUND

SLIP-ONS



TOURING

2017-2018	CHROME*	16780
2017-2018	BLACK*	46780
1995-2016	CHROME**	16773
1995-2016	BLACK**	46773

* Qualified manufacturer declared replacement part on 2017-2018 Touring models

** Qualified manufacturer declared replacement part on 2009-2016 Touring models

Monster Rounds match the same deep rich tone of Monster Ovals in a 4-inch round that fits perfect on CVO Dressers with extended saddlebag skirts.

- Full Coverage Heat Shields
- Fits Saddlebags with Extended Skirts
- CNC Machined End Cap

FOR CLOSED COURSE COMPETITION USE ONLY. NOT INTENDED FOR STREET USE.

TWIN SLASH ROUND



Twin Slash Rounds take the classic look of a round slip-on and add a touch of distinction with a twin slash end treatment, at an unbeatable price.

- Best Value Touring Slip-on
- Large 4-inch Round Muffler Body
- Signature Twin Slash End Treatment
- Optional Quiet Insert Available

TOURING

2017-2018	CHROME*	16672
1995-2016	CHROME**	16763
2010	CHROME (2-INTO-1 SLIP-ON)***	16777
1995-2018	QUIET BAFFLE	21902

* Qualified manufacturer declared replacement part on 2017-2018 Touring models

** Qualified manufacturer declared replacement part on 2009-2016 Touring models

*** Qualified manufacturer declared replacement part on 2010 Touring models

FOR CLOSED COURSE COMPETITION USE ONLY. NOT INTENDED FOR STREET USE.

TWIN SLASH OVAL

SLIP-ONS



TOURING

1995-2016	CHROME*	16767
1995-2016	QUIET BAFFLE	21911

* Qualified manufacturer declared replacement part on 2009-2016 Touring models

The Twin Slash look is available with the classic Vance & Hines Oval slip-on, a favorite among touring riders for over ten years.

- Signature Twin Slash End Treatment
- Large 4.5-inch Oval Muffler Body
- Optional Quiet Baffle Available

FOR CLOSED COURSE COMPETITION USE ONLY. NOT INTENDED FOR STREET USE.

HI-OUTPUT CARBON



The Hi-Output Slip-ons' design is singularly focused to yield maximum horsepower and features a deep race-inspired exhaust note.

- Aggressive Stepped Styling
- Handcrafted Carbon End Tip
- Fits Saddlebags with Extended Skirts
- Optional Quiet Insert Available

TOURING

1995-2016	CHROME*	16465
1995-2016	BLACK*	46465
1995-2016	QUIET BAFFLE	21905

* Qualified manufacturer declared replacement part on 2009-2016 Touring models

FOR CLOSED COURSE COMPETITION USE ONLY. NOT INTENDED FOR STREET USE.

MONSTER OVAL

SLIP-ONS



TOURING

1995-2016	CHROME / BLACK TIPS*	16753
1995-2016	CHROME*	16755
1995-2016	BLACK / CHROME TIPS*	46755
2009-2013	CHROME (EC COMPLIANT)	16787

* Qualified manufacturer declared replacement part on 2009-2016 Touring models

With twice the internal volume of standard slip-on mufflers, Monster Ovals produce strong and broad power with a deep rich tone that's ideal for long distance touring.

- Massive 5.5-inch Oval Muffer Body
- Full Coverage Heat Shields
- CNC Machined End Cap

FOR CLOSED COURSE COMPETITION USE ONLY. NOT INTENDED FOR STREET USE.

FISHTAIL 3-INCH



Meticulously formed, Fishtail Slip-ons are excellent choices for capturing a nostalgic look on a classic FL touring bike.

- Optional Quiet and Competition Baffles
- 3-inch Round with Fishtail End Cap
- Classic Fishtail Styling

TOURING

1995-2016	CHROME*	16775
1995-2016	QUIET BAFFLE	21899
1995-2016	COMPETITION BAFFLE	21897

* Qualified manufacturer declared replacement part on 2009-2016 Touring models

FOR CLOSED COURSE COMPETITION USE ONLY. NOT INTENDED FOR STREET USE.

TURNDOWN

SLIP-ONS



TOURING

2017-2018	CHROME*	16762
1995-2016	CHROME**	16761
1995-2018	QUIET BAFFLE	21931

* Qualified manufacturer declared replacement part on 2017-2018 Touring models

** Qualified manufacturer declared replacement part on 2009-2016 Touring models

Turndown Slip-ons feature large 4-inch muffler bodies with the Vance & Hines signature turndown end treatment compatible with CVO drop skirt bags. An all new maintenance-free baffle is used that also minimizes heat discoloration.

- 4-inch Round with Scalloped Turndown
- Nostalgic Styling
- Optional Quiet Insert Available

FOR CLOSED COURSE COMPETITION USE ONLY. NOT INTENDED FOR STREET USE.

TRIKE DELUXE



TOURING

Exclusively designed for the Harley-Davidson Tri Glide Ultra Classic and Street Glide Trike, the Trike Deluxe Slip-Ons improve ground clearance and provide a deep rich stereo friendly sound.

- Designed for Harley-Davidson Trike Models
- Monster Oval Sound & Performance
- Improved Ground Clearance Over Stock Mufflers
- Rolled Stainless Steel End Treatment

2009-2018	POLISHED TIP* (1)(2)	16789
2017-2018	TRIKE ADAPTOR KIT	16784
2017-2018	TRIKE ADAPTOR KIT BLACK	46784
2009-2016	TRIKE ADAPTOR KIT	16785

(1) 2017-2018 Models require trike adapter kit 16784 when paired with Power Duals

(2) 2009-2016 Models require trike adapter kit 16785 when paired with aftermarket headers

* Qualified manufacturer declared replacement part on 2009-2018 Touring models

FOR CLOSED COURSE COMPETITION USE ONLY. NOT INTENDED FOR STREET USE.

TWIN SLASH ROUND

SLIP-ONS



TRIKE ADAPTOR KIT

THIS KIT EXTENDS THE STANDARD VANCE & HINES 2009-2016 TOURING HEAD PIPES TO ALLOW FOR PROPER FITMENT ON HARLEY TRIKE MODELS.

TOURING

2017-2018	CHROME* (3)	16796
2015-2016	CHROME** (4)	16798
2017-2018	TRIKE ADAPTOR KIT	16784
2017-2018	TRIKE ADAPTOR KIT BLACK	46784
2015-2016	TRIKE ADAPTOR KIT	16785

(3) 2017 Models require trike adapter kit 16784 when paired with Power Duals

(4) 2015-2016 Models require trike adapter kit 16785 when paired with aftermarket headers

* Qualified manufacturer declared replacement part on 2017-2018 Touring models

** Qualified manufacturer declared replacement part on 2015-2016 Touring models



Specially designed for the Harley-Davidson Freewheeler with a shorter length cut to fit the compact size of the Freewheeler chassis, Twin Slash Round Slip-ons give the Freewheeler a nice throaty rumble and can be matched with Vance & Hines Power Dual or Dresser Dual head pipes.

- 4-inch Round Mufflers
- Signature Twin Slash End Treatment
- Optional Quiet Inserts

FOR CLOSED COURSE COMPETITION USE ONLY. NOT INTENDED FOR STREET USE.



The Competition Series Slip-Ons are a direct slip-fit to the OEM head pipes, and with a matching pearl nickel or matte black finish, they add an aggressive angular look with an equally aggressive sound.

- Lightweight Stainless Steel Construction
- Slip-fit to OEM Head Pipes
- Optional Quiet Insert Available



STREET

2014-2018	BLACK	47937
2014-2018	QUIET BAFFLE	7-60093

V-ROD

2009-2017	PEARL NICKEL (V-ROD MUSCLE)	75-110-14
2009-2017	QUIET BAFFLE*	7-60093

* Requires 2 pcs

FOR CLOSED COURSE COMPETITION USE ONLY. NOT INTENDED FOR STREET USE.

SOFTAIL

2007-2017	CHROME (1)	16831
2007-2017	CHROME (2)(3)	16833
2007-2017	CHROME (4)	16827
2000-2006	CHROME (5)	16821
2000-2017	QUIET BAFFLE	21301

(1) Fits FLSTC Heritage, FXST Softail Standard, FXSTB Night Train, FXSTC Softail Custom, FXCW Rocker, FXCWC CVO Springer Softail (2) Fits FLSTN Deluxe, FLS Slim, FLSTSB Crossbones, FXSB Breakout (3) Does not fit FLSTNSE CVO Deluxe (4) Fits FLSTF Fat Boy, FLSTFB Fat Boy Lo/Special, 2007-2008 FXSTSSE CVO Springer Softail (5) Fits FLSTC Heritage, FXST Softail Standard, FXSTB Night Train

DYNA

1991-2017	CHROME (6)	16823
1991-2017	QUIET BAFFLE	21301

(6) Does not fit 2008-2017 FXDF Fat Bob, 2010-2017 FXDWG Wide Glide, 2014-2017 FXDL Low Rider or FLD Switchback

SPORTSTER

2014-2018	CHROME	16863
2004-2013	CHROME	16819
2004-2018	QUIET BAFFLE	21301

FOR CLOSED COURSE COMPETITION USE ONLY. NOT INTENDED FOR STREET USE.



Straightshots HS Slip-Ons are the quickest way to pick up performance and get big bike sound without breaking the bank.

- 2.5-inch Round with Straight-Cut End Treatment
- Full Coverage Heat Shields
- Optional Quiet Baffle Available

COMPETITION SERIES 2-INTO-1



The Competition Series is a full line of ultra high performance drag race exhaust systems developed by the R&D team at the Vance & Hines race shop in Indianapolis.

- Lightweight Stainless Steel Construction
- Tapered and Stepped Head Pipes
- Slip-fit Merge Collectors
- Includes Wideband Sensor Ports
- Optional Quiet Insert Available

SOFTAIL

2000-2017	BLACK	75-114-9
2000-2017	QUIET BAFFLE	7-60093

DYNA

2006-2017	BRUSHED	75-115-4
2006-2017	BLACK	75-115-9
2006-2017	QUIET BAFFLE	7-60095

SPORTSTER

2014-2018	BRUSHED	75-118-4
2014-2018	BLACK	75-118-9
2004-2013	BRUSHED	75-117-4
2004-2013	BLACK	75-117-9
2004-2018	QUIET BAFFLE	7-60093

V-ROD

2002-2017	BLACK (1)	75-113-9
2009-2017	BLACK (V-ROD MUSCLE) (2)	75-116-9
2002-2017	BRUSHED (1)	75-113-4
2009-2017	BRUSHED (V-ROD MUSCLE) (2)	75-116-4
2002-2017	QUIET BAFFLE	7-60093

(1) Fits VRSCA/B/W V-Rod, VRSCD Night Rod and VRSCDX Night Rod Special
 (2) Fits VRSCF V-Rod Muscle

FOR CLOSED COURSE COMPETITION USE ONLY. NOT INTENDED FOR STREET USE.

HI-OUTPUT GRENADES

FULL SYSTEMS

SOFTAIL

2000-2017	CHROME (3)	16846
2000-2017	CHROME / BLACK TIPS (3)	16848
2000-2017	BLACK (3)	46846
2000-2017	BLACK / PEARL NICKEL TIPS (3)	46848
2000-2017	PASSENGER FOOTPEG RELOCATION BRACKET	16939
1986-1999	ADAPTOR BRACKET KIT	21898

(3) Foot peg relocation bracket required for passenger footpeg installation

DYNA

2006-2017	CHROME (4)	16899
2006-2017	CHROME / BLACK TIPS (4)	16896
2006-2017	BLACK (4)	46899
2006-2017	BLACK / PEARL NICKEL TIPS (4)	46896
2006-2017	PASSENGER FOOTPEG RELOCATION BRACKET	16941

(4) Foot peg relocation bracket required for passenger footpeg installation

SPORTSTER

2004-2018	CHROME (5)(6)	16854
2004-2018	CHROME / BLACK TIPS (5)(6)	16852
2004-2018	BLACK (5)(6)	46854
2004-2018	BLACK / PEARL NICKEL TIPS (5)(6)	46852
2004-2018	QUIET BAFFLE	21886

(5) Passenger foot pegs must be removed

(6) Oxygen Sensor Plug Kit (16925) required when used on 2004-2006 models

FOR CLOSED COURSE COMPETITION USE ONLY. NOT INTENDED FOR STREET USE.



Hi-Output Grenades break new ground with innovative three step mufflers and tapered CNC machined billet end caps. Staggered for a commanding stance, Hi-Output Grenades have a strong deep tone and are available in chrome/black with three end cap finishes.

- Aggressive Deep Tone
- Innovative Three-Step Muffler Design
- CNC Machined Billet End Caps
- Patent Pending

2-INTO-1 UPSWEEP



This 2-1 captures the essence of the urban scene. With a sculpted collector design covering the heart of this dyno tuned 2-into-1, it delivers street focused power and improved cornering clearance.

- CNC Machined Billet End Cap
- Optional Quiet Baffle
- Sculpted Collector Heat Shield



DYNA

2006-2017	CHROME	17622
2006-2017	BLACK	47622

SPORTSTER

2007-2018	CHROME (1)	17624
2007-2018	BLACK (1)	47624

(1) Not compatible with forward controls

FOR CLOSED COURSE COMPETITION USE ONLY. NOT INTENDED FOR STREET USE.



SOFTAIL

1986-2011	CHROME (2)	17817
1986-2011	QUIET BAFFLE	21301

(2) Oxygen Sensor Plug Kit (16925) required when used on 1986-2006 models

DYNA

2006-2011	CHROME	17819
1991-2005	CHROME (3)	16805
1995-2011	QUIET BAFFLE	21301

(3) Original Straightshots

SPORTSTER

2004-2013	CHROME	17821
1999-2003	CHROME	16811
2004-2018	QUIET BAFFLE	21301

FOR CLOSED COURSE COMPETITION USE ONLY. NOT INTENDED FOR STREET USE.



The staggered dual layout of Straightshots never falls out of fashion, but it's never been better with full-length one piece heat shields for a clean and seamless style.

- Classic Staggered Drag Pipe Styling
- Full Coverage Heat Shields
- Optional Quiet Baffle Available

SUPER RADIUS



Super Radius brings a deeper and richer tone to the custom-styled exhaust, engineered for today's larger capacity big twin engines to get solid performance and just the right sound.

- Bold Custom Bike Styling
- Full Coverage Heat Shields
- Quiet Insert Included



TOURING

2007-2016	CHROME	26063
2007-2016	BLACK	46063

SOFTAIL

1986-2017	CHROME	26051
1986-2017	BLACK	46051

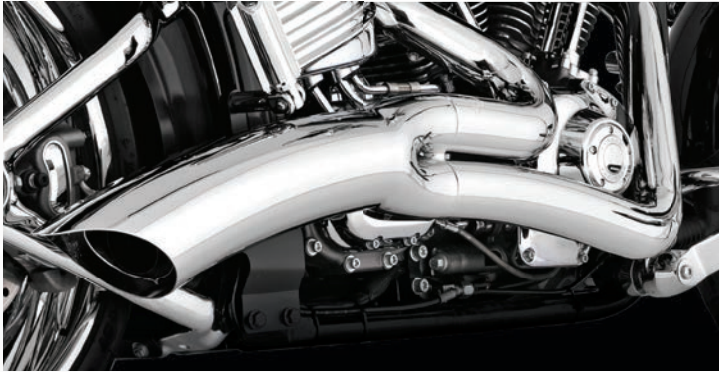
DYNA

2006-2017	CHROME	26053
2006-2017	BLACK	46053

FOR CLOSED COURSE COMPETITION USE ONLY. NOT INTENDED FOR STREET USE.

BIG RADIUS 2-INTO-1

FULL SYSTEMS



SOFTAIL

1986-2017	CHROME (1)(2)(3)(4)	28023
1986-2017	BLACK (1)(2)(3)(4)	48023

(1) Oxygen Sensor Plug Kit (16925) required when used on 1986-2006 models (2) Does not fit bikes with saddlebags that mount to the passenger foot peg (3) 1986-1999 models passenger foot pegs must be removed (4) Does not fit FXCW Rocker, FXCWC Rocker C or 2009 FXSTSSE Springer Softail

DYNA

2006-2017	CHROME (5)	28029
2006-2017	BLACK (5)	48029

(5) Requires removal of passenger foot pegs

At the intersection of radical style and superior power, Big Radius 2-into-1 plays the part with finely sculpted lines and a race engineered 2-into-1 design.

- Radius Style, 2-into-1 Performance
- Broad/Usable Torque Increase
- Full Coverage Heat Shields

FOR CLOSED COURSE COMPETITION USE ONLY. NOT INTENDED FOR STREET USE.

BIG SHOTS STAGGERED



Big Shots Staggered give you the best of both worlds, long and low 2-into-2 style pipes with 2-into-1 performance thanks to the Vance & Hines Power Chamber hidden crossover.

- Power Chamber Crossover Technology
- Full Coverage Heat Shields
- Optional Quiet Baffle Available



SOFTAIL

1986-2017	CHROME (1)	17939
1986-2017	BLACK (1)	47939
1986-2017	QUIET BAFFLE	21301

(1) Does not fit FXCW Rocker, FXCWC Rocker C or 2009 FXSTSSE Springer Softail

DYNA

2006-2017	CHROME	26053
2006-2017	BLACK	46053
1991-2005	CHROME	17911
1991-2017	QUIET BAFFLE	21301

FOR CLOSED COURSE COMPETITION USE ONLY. NOT INTENDED FOR STREET USE.

BIG SHOTS LONG / LONGSHOTS

FULL SYSTEMS



SOFTAIL

2012-2017	CHROME (2)	17823
1986-2006	CHROME	17811
1986-2006	CHROME	17813
1986-2017	QUIET BAFFLE	21301

(2) Does not fit FXCW Rocker, FXCWC Rocker C or 2009 FXSTSSE Springer Softail

DYNA

1991-2005	CHROME (5)	17805
1991-2005	QUIET BAFFLE	21301

(5) Longshots Original

The nostalgic look of Big Shots Long is especially well suited for the Heritage Softail Classic, where the length of the exhaust system runs beneath the saddlebag to the edge of the rear wheel.

- Full Coverage Heat Shields
- CNC Machined End Cap
- Fits Saddlebags with Extended Skirts

FOR CLOSED COURSE COMPETITION USE ONLY. NOT INTENDED FOR STREET USE.

SOFTAIL DUALS



The Hi-Output Slip-ons' design is singularly focused to yield maximum horsepower and features a deep race-inspired exhaust note.

- Aggressive Stepped Styling
- Fits Saddlebags with Extended Skirts
- Optional Quiet Insert Available



SOFTAIL

2012-2017	CHROME (1)	16893
1997-2011	CHROME (1)(2)	16793
1997-2017	FISHTAIL END CAP KIT	16923

(2) Oxygen Sensor Plug Kit (16925) required when used on 1997-2006 models

FOR CLOSED COURSE COMPETITION USE ONLY. NOT INTENDED FOR STREET USE.

TOURING

2017-2018	VO2 NAKED AIR INTAKE	71035
2017-2018	VO2 NAKED AIR INTAKE (3)	71031
2014-2016	VO2 NAKED AIR INTAKE (4)	71029
2008-2013	VO2 NAKED AIR INTAKE	71003
1999-2007	VO2 NAKED AIR INTAKE (5)(6)	71005

(3) Does not fit with OEM air filter cover. Accessory air filter cover recommended

(4) 2008-2015 CVO models require separate purchase of accessory air cleaner cover

(5) Does not fit 1999-2001 fuel injected Touring Models

(6) 2006-2007 CVO Ultra Classic requires purchase of accessory air cleaner cover

SOFTAIL / DYNA

2018	VO2 NAKED AIR INTAKE (SOFTAIL)	71031
2016-2017	VO2 NAKED AIR INTAKE (SOFTAIL) (7)	71029
2000-2015	VO2 NAKED AIR INTAKE (SOFTAIL)(8)	71005
2008-2017	VO2 NAKED AIR INTAKE (DYNA)	71007
1999-2007	VO2 NAKED AIR INTAKE (DYNA)	71005

(7) Fits 2011-2012 CVO Convertible, 2013-2014 CVO Breakout, 2014-2015 CVO Deluxe

(8) Does not fit 2011-2012 CVO Convertible, 2013-2014 CVO Breakout, 2014-2015 CVO Deluxe

SPORTSTER / STREET

1991-2018	VO2 NAKED AIR (SPORTSTER) (9)	71011
2014-2018	VO2 NAKED AIR (STREET) (9)	71028

(9) Does not fit with OEM air filter cover. Accessory air filter cover recommended

ACCESSORY COVERS

MULTI FIT	VO2 SKULLCAP CHROME	71013
MULTI FIT	VO2 SKULLCAP CROWN CHROME	71017
MULTI FIT	VO2 SKULLCAP BLACK	71015
MULTI FIT	VO2 SKULLCAP CROWN BLACK	71019
MULTI FIT	VO2 SKULLCAP CROWN MATTE CHROME	71025
MULTI FIT	VO2 SKULLCAP GRENADE CHROME	71041
MULTI FIT	VO2 SKULLCAP GRENADE BLACK	71043
MULTI FIT	VO2 SKULLCAP UPSWEEP CHROME	71045
MULTI FIT	VO2 SKULLCAP UPSWEEP BLACK	71047

FOR CLOSED COURSE COMPETITION USE ONLY. NOT INTENDED FOR STREET USE.



For those wanting to keep the stock look, but not necessarily the stock performance, Vance & Hines offers its VO2 Naked Air Intake as a high flow intake kit for use with your stock cover or one of our custom options.

- Enhanced Air Flow Over Stock
- Washable High Flow Filter
- Larger Backing Plate
- CNC Machined Venturi

VO2 ROGUE



Transform the look and feel of your v-twin powerplant with the VO2 Rogue Air Intake from Vance & Hines. Encased in a beautifully sleek CNC machined billet cover secured by race spec ARP bolts, the VO2 Rogue utilizes a high capacity deep pleated air filter featuring the K&N Xstream filter top developed for racing applications to produce the strongest increase in power.

- CNC Machined Billet Cover
- High Capacity Washable Air Filter Element
- Backing Plate, Venturi and Breather Assemblies Included
- Available in Chrome or Wrinkle Black Finish

TOURING

2017-2018	CHROME	70081
2017-2018	BLACK	40081
2008-2016	CHROME	70075
2008-2016	BLACK	40075
2002-2007	CHROME	70073
2002-2007	BLACK	40073

SOFTAIL

2018	CHROME	70085
2018	BLACK	40085
2016-2017	CHROME (1)	70075
2016-2017	BLACK (1)	40075
2000-2015	CHROME (2)	70073
2000-2015	BLACK (2)	40073

(1) Fits 2011-2012 CVO Convertible, 2013-2014 CVO Breakout, 2014-2015 CVO Deluxe (2) Does not fit 2011-2012 CVO Convertible, 2013-2014 CVO Breakout, 2014-2015 CVO Deluxe

DYNA

1999-2017	CHROME	70073
1999-2017	BLACK	40073

SPORTSTER

1991-2018	CHROME	70071
1991-2018	BLACK	40071

FOR CLOSED COURSE COMPETITION USE ONLY. NOT INTENDED FOR STREET USE.

VO2 CAGE FIGHTER

AIR INTAKES

TOURING

2017-2018	BRUSHED	70066
2008-2016	BRUSHED	70065
2002-2007	BRUSHED	70067

SOFTAIL

2018	BRUSHED	70087
2016-2017	BRUSHED (3)	70065
2000-2015	BRUSHED (4)	70067

(3) Fits 2011-2012 CVO Convertible, 2013-2014 CVO Breakout, 2014-2015 CVO Deluxe (4)
Does not fit 2011-2012 CVO Convertible, 2013-2014 CVO Breakout, 2014-2015 CVO Deluxe

DYNA

1999-2017	BRUSHED	70067
-----------	---------	-------

SPORTSTER

1991-2018	BRUSHED	70069
-----------	---------	-------



Sporting a sleek and minimalistic design, the VO2 Cage Fighter is designed for maximum air flow to the filter element while providing a custom look.

- Includes Large Inlet Backing Plate and Billet Venturi
- Includes Washable High Flow Filter Element
- Available in Brushed Finish

FOR CLOSED COURSE COMPETITION USE ONLY. NOT INTENDED FOR STREET USE.



A modern twist on a classic design, the 90 Air Intake uses a forward-facing cone filter to maximize the increased air flow into the engine. Available in three finish combinations, the 90 Air Intake delivers looks to suit any taste.

- All new design for improved 90 Degree performance
- Custom covers for electronics and oil lines included
- Available in Chrome, Chrome and Black, and Black

TOURING

2008-2016	CHROME (1)	70022
2008-2016	BLACK (1)	40022
2008-2016	BLACK / CHROME (1)	70032
2002-2007	CHROME (1)(2)	70025
2002-2007	BLACK (1)(2)	40025
2002-2007	BLACK / CHROME (1)(2)	70035

(1) Does not fit models equipped with Twin-Cooled Engine, fairing lower glove boxes, or fairing lower speakers (2) Does not fit 1999-2001 fuel injected Touring Models

SOFTAIL

2016-2017	CHROME (3)	70022
2016-2017	BLACK (3)	40022
2016-2017	BLACK / CHROME (3)	70032
2000-2015	CHROME (4)	70025
2000-2015	BLACK (4)	40025
2000-2015	BLACK / CHROME (4)	70035

(3) Fits 2011-2012 CVO Convertible, 2013-2014 CVO Breakout, 2014-2015 CVO Deluxe
(4) Does not fit 2011-2012 CVO Convertible, 2013-2014 CVO Breakout, 2014-2015 CVO Deluxe

DYNA

1999-2017	CHROME	70025
1999-2017	BLACK	40025
1999-2017	BLACK / CHROME	70035

SPORTSTER

1991-2018	CHROME	70029
1991-2018	BLACK	40029
1991-2018	CHROME / BLACK	70039

FOR CLOSED COURSE COMPETITION USE ONLY. NOT INTENDED FOR STREET USE.

TOURING

2008-2016	CARBON	70053
2008-2016	CHROME	70003
2008-2016	BLACK	40003
1999-2007	CHROME (5)	70001
1999-2007	BLACK (5)	40001

(5) Does not fit 1999-2001 fuel injected Touring Models

SOFTAIL

2016-2017	CARBON	70053
2016-2017	CHROME (6)	70003
2016-2017	BLACK (6)	40003
2000-2015	CHROME (7)	70001
2000-2015	BLACK (7)	40001

(6) Fits 2011-2012 CVO Convertible, 2013-2014 CVO Breakout, 2014-2015 CVO Deluxe

(7) Does not fit 2011-2012 CVO Convertible, 2013-2014 CVO Breakout, 2014-2015 CVO Deluxe

DYNA

1999-2017	CHROME	70001
1999-2017	BLACK	40001

FOR CLOSED COURSE COMPETITION USE ONLY. NOT INTENDED FOR STREET USE.



A modern twist on the classic style of cruiser air cleaners, the Drak air intake incorporates both style and performance into its design. The forward-facing air inlets ensure for maximum air flow.

- Enhanced Air Flow Over Stock
- Washable High Flow Filter
- Larger Backing Plate
- CNC Machined Venturi

RACESHOP COMPONENTS



Vance & Hines RacerShop Components are manufactured with state-of-the-art equipment, utilizing stringent quality control procedures to significantly improve all components for prolonged durability and reliability.

Whether building a street performance engine or a drag motor, Vance & Hines valvetrain components are drop-in upgrades providing needed stability while reducing premature wear. All components are made to exacting tolerances ensuring maximized performance.

M8 VALVE SPRINGS (Contains 4 QTY of each piece)

2017-2018	1.26" EXHAUST- INCONEL	35-4575
2017-2018	1.30" EXHAUST- INCONEL	35-4576
2017-2018	1.57" INTAKE- STAINLESS	35-4525
2017-2018	1.61" INTAKE- STAINLESS	35-4526

TWIN CAM VALVE SETS (Contains 2pcs/ Set)

2005-2017	1.575" STD EXHAUST- STAINLESS (1)	35-4510
2005-2017	1.610" EXHAUST- STAINLESS (+.035) (1)	35-4511
2005-2017	1.630" EXHAUST- STAINLESS (+.055) (1)	35-4512
2005-2017	1.650" EXHAUST- STAINLESS (+.075) (1)	35-4513
2005-2017	1.630" EXHAUST- INCONEL (+.055) (1)	35-4514
2005-2017	1.805" STD INTAKE- STAINLESS (1)	35-4520
2005-2017	1.900" INTAKE- STAINLESS (+.095) (1)	35-4521
2005-2017	2.000" INTAKE STAINLESS (+.195) (1)	35-4522
2005-2017	1.900" INTAKE- STAINLESS HOLLOW STEM (+.095) (1)	35-4523
2005-2017	2.000" INTAKE- STAINLESS HOLLOW STEM (+.195) (1)	35-4524

(1) Excludes Milwaukee Eight Equipped Models

TWIN CAM VALVE KITS (Contains 2 QTY each Valve, Spring, Retainer, Spring Base, Viton Valve Seal & Keeper)

2005-2017	1.805" STD VALVE/ PERFORMANCE SPRINGS (1)	35-4530
2005-2017	1.900" INTAKE VALVE/ PERFORMANCE SPRINGS (1)	35-4531
2005-2017	2.000" INTAKE VALVE/ PERFORMANCE SPRINGS (1)	35-4532
2005-2017	1.575" EXHAUST VALVE/ PERFORMANCE SPRINGS (1)	35-4540
2005-2017	1.610" EXHAUST VALVE/ PERFORMANCE SPRINGS (1)	35-4541
2005-2017	1.650" EXHAUST VALVE/ PERFORMANCE SPRINGS (1)	35-4542
2005-2017	1.650" EXHAUST VALVE/ PERFORMANCE SPRINGS (1)	35-4543

(1) Excludes Milwaukee Eight Equipped Models

FOR CLOSED COURSE COMPETITION USE ONLY. NOT INTENDED FOR STREET USE.

VALVE SPRINGS

(Contains 4 QTY of each piece)

2004-2017 SPRINGS, RETAINER, SPRING BASE, VITON SEAL, & KEEPER (1)(2) 35-4500
 (1) Excludes Milwaukee Eight Equipped Models
 (2) Fits 2005-2017 Twin Cam, 2004-2018 XL Sportster & 2009-2013 XR Sportster

CAM SET

(Contains camshaft set, chest gasket set, bearings)

2006-2017 BIG TWIN CAM SET (1) 35-4551
 (1) Fits 2006-2017 Dyna models, 2007-2016 Touring models and 2007-2017 Softail models

LIFTER SET

(Contains 2 QTY of each piece)

1999-2018 TWIN CAM LIFTER SET (2) 35-4553
 (2) Fits 2000-2018 XL Sportster, 2009-2013 XR Sportster

PUSHRODS

(Contains 2 QTY EXH pushrods & INT pushrods)

1999-2017 PUSHROD SET (3) 35-4552
 (3) Excludes Milwaukee Eight Equipped Models

PISTONS

(Contains piston set, wrist pin, ring set, pin locks)

1999-2017 BIG BORE 107" PISTON SET (1)(2)(3)(4) 35-4554
 (1) Fits 2007-2016 Touring models (2) Fits 2007-2017 Dyna & Softail models
 (3) Fits 1999-2006 Dyna & Touring models equipped with 4-3/8" flywheels
 (4) Fits 2000-2006 Softail models equipped with 4-3/8" flywheels

VALVE GUIDES

(Sold Individually)

2006-2017 INTAKE/EXHAUST CAST IRON GUIDE (4) 35-4508
 (4) Fits 2004-2018 XL Sportster

VALVE SEAT KIT

(Contains 2 QTY per Kit)

2005-2017 INTAKE VALVE SEAT KIT (4) 35-4518
 2005-2017 EXHAUST VALVE SEAT KIT (4) 35-4517
 (4) Fits 2004-2018 XL Sportster



FOR CLOSED COURSE COMPETITION USE ONLY. NOT INTENDED FOR STREET USE.



Header Wrap Kit



O2 Sensor Plug Kit



Intake Rain Sock

With the Vance & Hines Header Wrap Kit, give any exhaust system a whole new look, from old school chopper to drag bike.

- Two Laser Cut Clamps
- Six Locking Stainless Steel Ties
- 25-foot Black Wrap Tape Roll
- Wraps Two Headers Thoroughly



ACCESSORY PARTS

MULTI FIT	HEADER WRAP KIT	26523
MULTI FIT	OXYGEN SENSOR PLUG KIT (18MM)	16925
MULTI FIT	OXYGEN SENSOR PLUG KIT (12MM)	16935
MULTI FIT	VO2 90 AIR INTAKE RAIN SOCK	22928
1999-2013	PRO PIPE HI-OUTPUT BLACK HEATSHIELD KIT (1)	60013
2006-2011	PRO PIPE HI-OUTPUT BLACK HEATSHIELD KIT (2)	60019

(1) Fits 1999-2013 Touring with 47533 or 47559 Pro Pipe Hi-Output 2-1
 (2) Fits 1986-2011 Softail with 47521 Pro Pipe Hi-Output 2-1

FOR CLOSED COURSE COMPETITION USE ONLY. NOT INTENDED FOR STREET USE.



WARRANTY

LEGAL INFO

ALL VANCE & HINES PRODUCTS ARE WARRANTED AGAINST DEFECTS IN MATERIAL AND WORKMANSHIP FOR A PERIOD OF ONE YEAR. THIS WARRANTY DOES NOT COVER DISCOLORATION OR RUST. THIS WARRANTY SHALL BE LIMITED TO THE REPAIR OR REPLACEMENT OF THE PRODUCT, WHICH MAY BE PROVEN DEFECTIVE UNDER NORMAL USE. VANCE & HINES WILL NOT WARRANTY ANY SYSTEM THAT HAS BEEN ABUSED, MISUSED, IMPROPERLY INSTALLED OR MODIFIED.

DEALERS OR DISTRIBUTORS ARE NOT AUTHORIZED TO MAKE DISPOSITIONS BINDING UPON VANCE & HINES. VANCE & HINES WILL NOT BE RESPONSIBLE FOR ANY LABOR CHARGES INCURRED IN REMOVING OR REPLACING ANY SYSTEM UNDER WARRANTY. A RETURN AUTHORIZATION NUMBER AND A COPY OF THE ORIGINAL PURCHASE INVOICE MUST ACCOMPANY ALL RETURNS. PARTS RETURNED WITHOUT A RETURN AUTHORIZATION MAY BE REFUSED.