

# WV711



## Smart Pressure<sup>®</sup> Diagnostic Smoke<sup>®</sup> Machine

Find All High Pressure Leaks with Smart Pressure<sup>®</sup> Technology and UltraTrace<sup>UV</sup> Dye.

The Smart Pressure<sup>®</sup> Diagnostic Smoke<sup>®</sup> Machine is a full featured leak detector, specially designed for turbocharged vehicle systems.



The WV711's Smart Pressure<sup>®</sup> technology produces the densest visible smoke vapor over the unit's *entire* range of operating pressure. Smart Pressure<sup>®</sup> technology software electronics prevents thinning of smoke density that occurs when conventional units are set at high pressure. A denser smoke vapor means it's easier to see at leak points. It also means a faster UltraTrace<sup>UV</sup> dye deposit at the exact location of the leaks, which is essential for high pressure leak testing! You simply can't find all the leaks without it!

### Kit Contents

#### Included



**WV0716UV**  
The (2) bottles of UltraTrace<sup>UV</sup> smoke solution included performs hundreds of tests.



**WVA-065**  
Combination white/UV/laser light helps find exiting smoke and **UV** trace at exact leak locations.



**WVA-073**  
Wireless remote

#### Optional



**WVA-092**  
VW Turbo Adapter with male quick-connect



**WVA-091**  
Turbo Adapter Set; 35mm to 105mm, in 5mm increments



**WVA-095**  
Female quick-connect 'plug'; connects to a WVA-091 adapter so it can be used as a 'plug'

# WV711

## Smart Pressure<sup>®</sup> Diagnostic Smoke<sup>®</sup> Machine



### Technical Specifications:

- ▶ **Dimensions**  
h: 14.5" (36.8 cm)  
w: 13.75" (34.9 cm)  
d: 10" (25.4)
- ▶ **Weight**  
17 pounds(7.7kg)
- ▶ **Power**  
12 Volt DC or 110-220V AC
- ▶ **Inlet Pressure**  
50-175 psi (3.5-12 bar)
- ▶ **Inlet Gas Source**  
Workshop Air  
Any Inert Gas Source
- ▶ **Output Pressure**  
3-43.5 PSI  
(207 mbar-3 bar)
- ▶ **Flow Rate**  
0-20 LPM
- ▶ **Not for EVAP Testing**



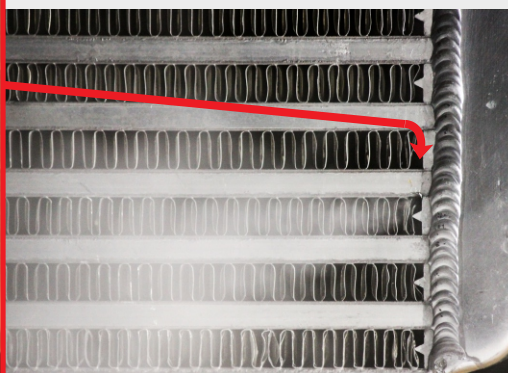
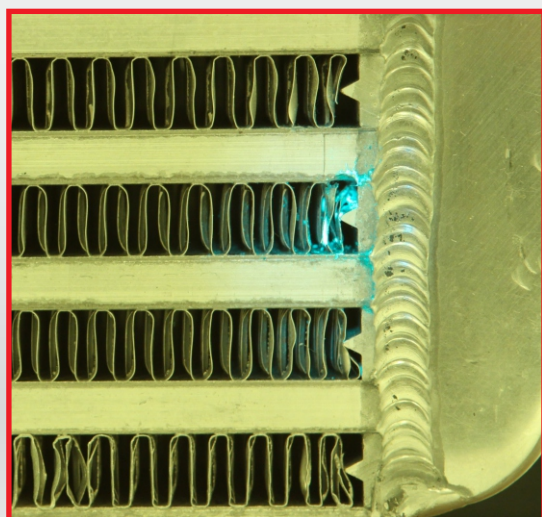
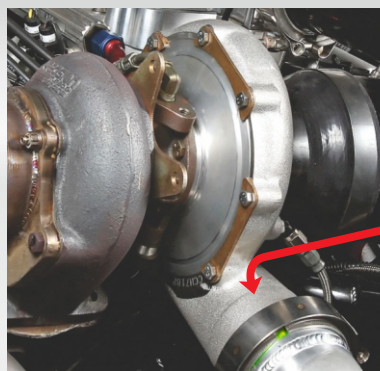
### Smart Pressure<sup>®</sup> Technology Features

- **Contaminant-free UltraTrace<sup>UV</sup> dye solution marks leak spot:** essential for high pressure testing
- **Easy Digital Pressure Setting:** no need to fumble with analog regulator
- **Smart Pressure<sup>®</sup> technology:** automatically delivers densest smoke vapor, regardless of pressure setting
- **Selection Modes:** digital display shows pressure in PSI/bar and flow in LPM
- **Quantifies Leak:** with pressure-decay as well as leak flow rate, regardless of pressure setting
- **Flexible Gas Source:** use with workshop air or any inert gas
- **Self-Calibrating**

### Applications

- **Designed for turbocharged vehicles:** tests entire turbo system
- **Tests virtually all pressure systems** (Do not use on EVAP System)

Smart Pressure<sup>®</sup> technology, along with UltraTrace<sup>UV</sup> Dye, provides superior high pressure leak location. Excellent smoke density is maintained throughout the unit's full operating pressure range. The UltraTrace<sup>UV</sup> Dye deposit is ESSENTIAL for marking leak locations in high pressure applications.



Shop for other automotive tools on our website.