

# PRODUCT CATALOG

By Vehicle Type



Work-Driven Design®

# PURPOSE BUILT FROM YOUR BUSINESS UP.

Our wide range of vehicle types provides class 1-7 solutions that are built specifically around your company's needs. From walk-ins to truck bodies and cargo vans, we have the right vehicles to get your work done each and every day while controlling your cost of ownership.



## Truck Body

Built on a solid cab chassis, Utilimaster's truck bodies are the industry standard for heavy-duty commercial delivery. Engineered and made tough with composite materials like Utiliplate™, they're all built to deliver optimal performance and maximum versatility.



## Walk-in Van

For the ultimate versatility, our walk-in vans have a highly modular stand-up cargo area and multiple door configurations. Lightweight aluminum construction provides a durable, rust-free body for lighter overall weight and increased payload capacity. Low step-in cab and rear doors make entry and exit easy and accessible.



## Upfit

Utilimaster has a long history of designing and building custom upfits for virtually every kind of delivery and service business. We've worked alongside, served, innovated and grown with the biggest fleet brands in the world. Along with Utilimaster Upfit Services, our enhanced upfits and ship-through facilities have yielded custom packages and specialty options that not only do the job, but do the job better.



## Aftermarket Parts

We have thousands of quality aftermarket parts to replace what's broken or to upgrade your fleets with the latest and smartest technology, including everything from backup cameras to keyless entry to GPS and beyond. Plus, we have the expertise to come to you and install with confidence.



## Field Service

Our field service teams can assess your fleet and recommend new parts and technology to modernize and optimize your vehicles. Then, they'll make sure installation gets done quickly and efficiently so you can get back on the road quickly, and better than ever.



---

**Truck Bodies**



## UTILIVAN

Utilivans are the industry standard for medium-duty commercial delivery. Traditionally built on a cutaway chassis, Utilivans are built to be tough, constructed with durable materials such as aluminum and a variety of composite materials such as Utiliplate.™ The innovative cab can be designed to fit as many as five crew members and can be configured with a set-back walk-through bulkhead.





### At a Glance

- Anti-rust galvanized steel rear structure
- Extruded aluminum top and bottom rails
- Several available rear door configurations

### Chassis and Body Options

Chassis	Length	Height	Body Width
Chevy 3500	10'   12'   14'   16   17'	72"   78"   84"   90"	96"
Chevy 4500	10'   12'   14'   16   17'   18'	72"   78"   84"   90"	96"
Ford E350	10'   12'   14'   16   17'	72"   78"   84"   90"	96"
Ford E450	10'   12'   14'   16   17'   18'	72"   78"   84"   90"	96"
Ford Transit	10'   12'   14'   16'	72"   78"   84"   90"	96"
Mercedes Sprinter	10'   12'   14'   16'	72"   78"   84"   90"	96"

BULKHEADS



Cabover Storage

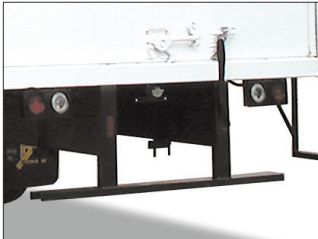


Sliding Door



Solid Bulkhead

BUMPERS



ICC Bumper



Grip Strut



Hitch



Rubber Dock



Treadplate Bumper

CARGO CONTROL



Cargo Tie Down Rigs



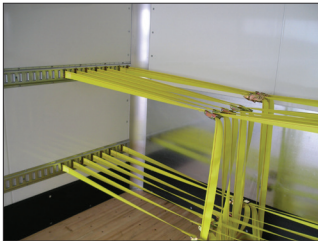
D-Rings



E-Track



E-Track Recessed



E-Track Straps



Fixed and Foldable Shelving



Garment Rails



Rubber D Bumper Interior Sidewall

DOORS



Double-Narrow Swing Rear Door



Bi-Fold Swing Rear Doors



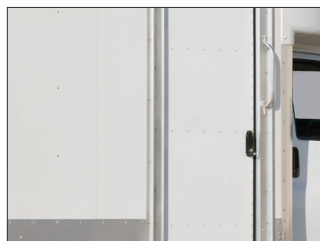
Full-Opening Swing Rear Door



Full-Width Roll-Up Door



Narrow Roll-Up Door



Side RV Door with Stepwell



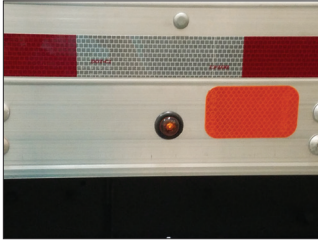
Side Roll-Up Door



Single-Swing Side Door



EXTERIOR LIGHTING



Mid-Body Base Rail Turn LED



Mid-Body Turn Light

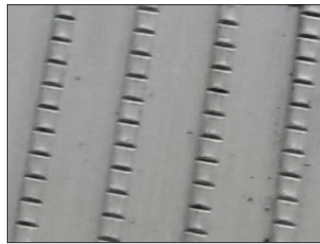


Rear Load Light

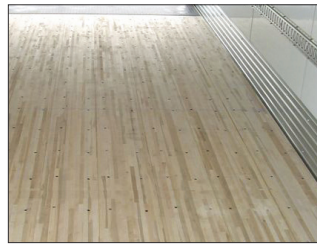
FLOORS



Aluminum



Knurled



Laminated Hardwood



Ribbed Aluminum



2" Pine

INTERIOR LIGHTING



3-Way Switch with Cab Indicator Light



LED Cargo Lights



Motion Detected LED Cargo Lights

LIFTGATES / RAMPS



12" Roller Ramp



Cantilever Liftgate



Rail Liftgate



Tuck Under Liftgate

ROOFS



Aerocap



Cabover Attic

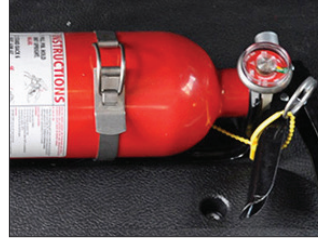
SAFETY



Rear and Side Grab Handles



Back-Up Camera



Fire Extinguisher



Triangle Reflector Kit



Reverse Sensor

STEPS



Side and Rear Stirrup Steps

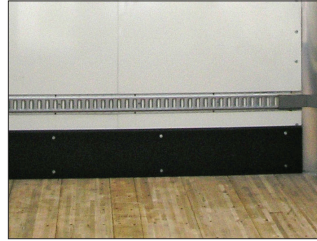
WALLS



Utiliplate Sidewalls



Front Wall Rein Hat Section



Front Wall Scuff



Front Wall Vents



Plastic Eco-Tough Scuff



Sidewall Vents

OTHER



Underbody Tool Box



Rear Door Deflector

## UTILIVAN LIMITED WARRANTY

---

UTILIMASTER, A Shyft Group Brand, warrants that the body shall be free of defects in factory materials and workmanship, under normal use and service, as set forth herein. This LIMITED WARRANTY is issued to the original retail purchaser and is neither transferable to nor enforceable by any other person. This LIMITED WARRANTY is given in lieu of any and all other expressed or implied warranties. Warranted items are specified by period in the following schedule:

### 1-YEAR COVERAGE

Utilimaster warrants components manufactured or installed by Utilimaster, subject to the exclusions as outlined herein. Utilimaster and/or the supplier reserve the right to request the return of failed parts. In addition, Utilimaster warrants the unsatisfactory application of paint, when both paint and full body undercoat are applied by Utilimaster, to doors, bumpers, and wheels. Utilimaster reserves the right to request two (2) written estimates for all paint work.

### 3-YEAR COVERAGE

Utilimaster warrants for a period of 3 years or for the first 100,000 miles of operation, whichever shall first occur, the basic body structure. Limited warranty covers the main structural components of the body; included in this coverage are the roof, floor, sidewalls, and rear and front wall structures. Aftermarket or service parts purchased from Utilimaster will be given a 1-year limited warranty from the date of purchase. Except as outlined above, Utilimaster makes no warranty on any part, accessory, or goods manufactured by others that are installed on a Utilimaster Van Upfit Body. Utilimaster will assign any warranty provided by suppliers to the customer.

### NOT COVERED BY WARRANTY, EXCLUSIONS:

1. Vehicle chassis, engine cab, tires, chassis, and auxiliary batteries (which are warranted separately by the manufacturer thereof).
2. Wheel alignment or damage resulting from misalignment, including any damage caused by tires or tire failure.
3. Electrical, hydraulic, or application-specific components, including components specified or supplied by the customer (which are warranted separately by the manufacturer thereof).
4. Body glass, except improper installation.
5. Any non-Utilimaster parts, accessories, or goods, including those sourced and installed by third parties.
6. Work performed by third parties without pre-authorization and consent from Utilimaster warranty department.
7. Normal wear, usage, or consumable items or conditions resulting from the failure to perform regular maintenance and care.
8. Defects or damage attributable to abuse or misuse of the product, including overloading the vehicle beyond the GVWR and uses of the vehicle for which it was not intended.
9. Damage resulting from failure to promptly notify and comply with the instructions of the manufacturer, Utilimaster, about defects when noted.
10. Items lost, stolen, or damaged in transit of the vehicle from the manufacturer to the original retail purchaser.
11. Deterioration or damage caused by corrosive, hazardous, or otherwise dangerous cargo.

The warranty begins on the date of delivery to the original retail purchaser. ANY IMPLIED WARRANTIES ARE LIMITED IN DURATION TO THE COVERAGE PERIODS OF THIS WARRANTY. It shall be the customer's responsibility to contact Utilimaster before any repairs are made that are covered by or affect this warranty, in order to secure Utilimaster's prior approval. Should a defect in materials or workmanship develop that is attributable to Utilimaster's manufacturing or installation of components and if Utilimaster is immediately notified of said defect, Utilimaster will, in the method it determines, at its sole option to be necessary, repair or replace any such defective component at its own cost and expense, exclusive of freight costs and import duties and/or fees if applicable. Utilimaster reserves the right to require a technician or representative inspect the vehicle or equipment prior to issuing such approval. Utilimaster reserves the right to make changes or modify the design or product without thereby obligating itself to make the same changes or modifications upon its products previously manufactured. Utilimaster's warranty is void if Utilimaster did not provide authorization to perform such work or if the original equipment parts are not used in repairs.

AS THE WARRANTOR, UTILIMASTER SPECIFICALLY EXCLUDES ANY OBLIGATION FOR CONSEQUENTIAL DAMAGES OR INCIDENTAL EXPENSES FOR THE BREACH OF THIS WARRANTY OR ANY IMPLIED WARRANTY. CONSEQUENTIAL DAMAGES OR INCIDENTAL EXPENSES INCLUDE, BUT ARE NOT LIMITED TO, SUCH ITEMS AS LOSS OF USE OF THE VEHICLE, LOSS OF TIME, INCONVENIENCE, RENTAL COSTS, ROAD SERVICE CHARGES, TELEPHONE, TRAVEL, LODGING, AND CARGO DAMAGE OR OTHER COMMERCIAL LOSSES. (SOME STATES DO NOT ALLOW THE EXCLUSION OR LIMITATION OF INCIDENTAL OR CONSEQUENTIAL DAMAGES, SO THE ABOVE LIMITATION OR EXCLUSION MAY NOT APPLY TO YOU.)

The intended use of this van body is the carrying of cargo. The van body is not designed or built for passenger occupancy, or for the hauling of cargo in excess of its gross vehicle weight rating (GVWR).



DRY FREIGHT

## DRY FREIGHT TRUCK BODIES

Utilimaster's truck body is the industry standard for heavy-duty commercial delivery and service. Built from the ground up on a safe and reliable cab and chassis, truck bodies are constructed and customized to handle the toughest loads, using the most durable materials, including aluminum and Utiliplate™. Utilimaster has over 40 years of experience in building the industry's hardest working truck bodies, and can recommend the best sidewall application for your business. We customize every truck body to maximize productivity and safety. Options include interior fold-up or fixed shelving, E-track systems, cargo load bars, work counters, bins, compartments, and more.





### At a Glance

- Rugged, durable construction
- Ideal for large product delivery

### Chassis and Body Options

Chassis	Length	Height	Body Width
Ford	12'   14'   16'   18'   20'   22'   24'   26'   30'	72" - 108"	96"   102"
Chevy	12'   14'   16'   18'   20'   22'   24'   26'	72" - 108"	96"   102"
Dodge	12'   14'   16'   18'   20'	72" - 108"	96"   102"
International	16'   18'   20'   22'   24'   26'   30'	72" - 108"	96"   102"
Freightliner	16'   18'   20'   22'   24'   26'   30'	72" - 108"	96"   102"
Isuzu	16'   18'   20'   22'   24'   26'   30'	72" - 108"	96"   102"
Peterbilt / Kenworth	16'   18'   20'   22'   24'   26'   30'	72" - 108"	96"   102"
Hino	16'   18'   20'   22'   24'   26'   30'	72" - 108"	96"   102"
Mitsubishi	16'   18'   20'	72" - 108"	96"   102"
Mack	16'   18'   20'   22'   24'   26'   30'	72" - 108"	96"   102"

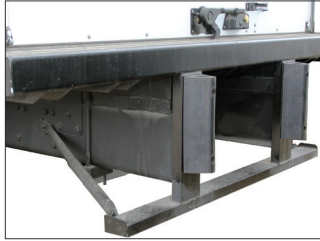


BULKHEADS



Solid Bulkhead

BUMPERS



Standard 5" ICC



Pooched Bumper



Rubber Dock Bumpers



ICC Bumper Bolt On

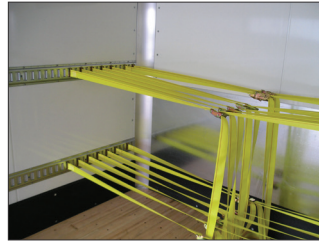
CARGO CONTROL



E-Track



Cargo D-Rings



E-Track Straps



E-Track Buckle Strap



Rubber D Bumper Interior Sidewall



E-Track Recessed



Garment Rails



Fixed Shelving



Racks



Folding Shelves

DOORS



Roll-Up Door



Swing Doors



Side Slider Door



Side Swing Door

EXTERIOR LIGHTING



Mid-Body Turn Light



Cornerpost Lights



Rear Load Light



Mid-Body Base Rail LED



LED Work Light Rear Header

FLOORS



Forklift Package



1-1/8" Hardwood Floor



Rear Threshold Package



Crossmembers on 8" Centers



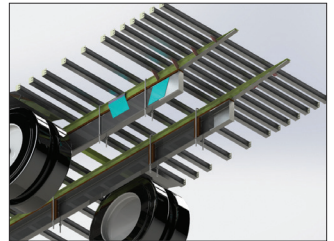
2" Pine Floor



Knurled Floor



Structural C-channel Long Sills (ILO I-beam)



Extra Crossmembers at Rear



Aluminum Floor



Extend Floor to Rear Threshold



Ribbed Aluminum Floor Planks

INTERIOR LIGHTING



3-Way Switch with Cab Indicator Light



4" Round LED Cargo Light with Switch



4x16 LED Light with Motion Detector  
Extra 4x16 Cargo Light



(2) 18" LED Motion Cargo Light

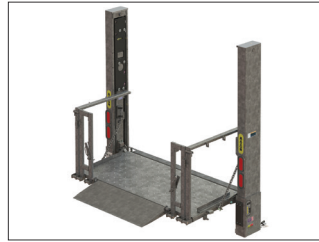
LIFTGATES/RAMPS



12" Roller Ramps



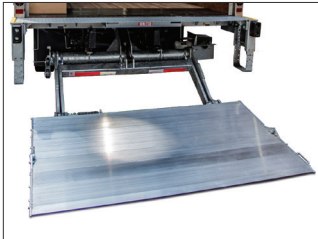
Cantilever Liftgate



Column Liftgate



Rail Liftgate



Slide Liftgate



Tuck Under Liftgate



Right Rear Stirrup Step



Left Rear Stirrup Step

ROOFS



Translucent Fiberglass Roof



Bows on 12" and 16" Center



Aluminum Roof



Lined and Insulated Roof

SAFETY



Cab Grab Handle



Conspicuity Tape (Sides & Rear)



Rear Grab Handle



Reverse Sensor



Fire Extinguisher (2.5 lb or 5 lb)



Triangle Reflector Kit



Backup Camera



Rear Alarm

WALLS



Aluminum



Utiliplate



Front Wall Scruff



Front Wall Rein Hat Sections



Front Wall Vents



Sidewall Vents



12-5/8" Plastic Eco-Tough Scruff

OTHER



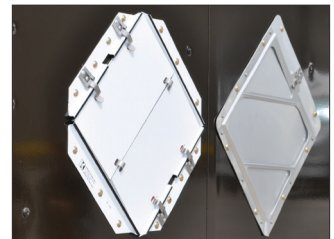
Rear Door Deflector



Nose Cone



First Aid Kit



Hazmat Placards



Underbody Tool Box

## DRY FREIGHT TRUCK BODY LIMITED WARRANTY

---

UTILIMASTER, A Shyft Group Brand, warrants that the body shall be free of defects in factory materials and workmanship, under normal use and service, as set forth herein. This LIMITED WARRANTY is issued to the original retail purchaser and is neither transferable to nor enforceable by any other person. This LIMITED WARRANTY is given in lieu of any and all other expressed or implied warranties. Warranted items are specified by period in the following schedule:

### 1-YEAR COVERAGE

Utilimaster warrants all components manufactured or installed by Utilimaster, subject to the exclusions as outlined herein. Utilimaster and/or the supplier reserve the right to request the return of failed parts. In addition, Utilimaster warrants the unsatisfactory application of paint when both paint and full body undercoat are applied by Utilimaster to roll-up doors, bumpers, and wheels. Utilimaster reserves the right to request two (2) written estimates for all paintwork.

### 3-YEAR COVERAGE

Utilimaster warrants for a period of 5 years or for the first 150,000 miles of operation, whichever shall first occur, the basic body structure. Limited warranty covers the main structural components of the body; included in this coverage are the roof, sidewalls, and rear and front wall structures. Wooden floors, where applied, are excluded from the 5-year period and is limited to 1-year of limited warranty coverage.

Aftermarket or service parts purchased from Utilimaster will be given a 1-year limited warranty from the date of purchase. Except as outlined above, Utilimaster makes no warranty on any part, accessory, or goods manufactured by others that are installed on a Utilimaster Truck Body. Utilimaster will assign any warranty provided by suppliers to the customer.

### NOT COVERED BY WARRANTY, EXCLUSIONS:

1. Vehicle chassis, engine cab, tires, chassis, and auxiliary batteries (which are warranted separately by the manufacturer thereof).
2. Wheel alignment or damage resulting from misalignment, including any damage caused by tires or tire failure.
3. Electrical, hydraulic, or application-specific components, including components specified or supplied by the customer (which are warranted separately by the manufacturer thereof).
4. Body glass, except improper installation.
5. Any non-Utilimaster parts, accessories, or goods, including those sourced and installed by third parties.
6. Work performed by third parties without pre-authorization and consent from Utilimaster warranty department.
7. Normal wear, usage, or consumable items or conditions resulting from the failure to perform regular maintenance and care.
8. Defects or damage attributable to abuse or misuse of the product, including overloading the vehicle beyond the GVWR and uses of the vehicle for which it was not intended.
9. Damage resulting from failure to promptly notify and comply with the instructions of the manufacturer, Utilimaster, about defects when noted.
10. Items lost, stolen, or damaged in transit of the vehicle from the manufacturer to the original retail purchaser.
11. Deterioration or damage caused by corrosive, hazardous, or otherwise dangerous cargo.
12. Damage or perforations to hardwood floors.

The warranty begins on the date of delivery to the original retail purchaser. ANY IMPLIED WARRANTIES ARE LIMITED IN DURATION TO THE COVERAGE PERIODS OF THIS WARRANTY. It shall be the customer's responsibility to contact Utilimaster before any repairs are made that are covered by or affect this warranty, in order to secure Utilimaster's prior approval. Should a defect in materials or workmanship develop that is attributable to Utilimaster's manufacturing or installation of components and if Utilimaster is immediately notified of said defect, Utilimaster will, in the method it determines, at its sole option to be necessary, repair or replace any such defective component at its own cost and expense, exclusive of freight costs and import duties and/or fees if applicable. Utilimaster reserves the right to require a technician or representative inspect the vehicle or equipment prior to issuing such approval. Utilimaster reserves the right to make changes or modify the design or product without thereby obligating itself to make the same changes or modifications upon its products previously manufactured. Utilimaster's warranty is void if Utilimaster did not provide authorization to perform such work or if the original equipment parts are not used in repairs.

AS THE WARRANTOR, UTILIMASTER SPECIFICALLY EXCLUDES ANY OBLIGATION FOR CONSEQUENTIAL DAMAGES OR INCIDENTAL EXPENSES FOR THE BREACH OF THIS WARRANTY OR ANY IMPLIED WARRANTY. CONSEQUENTIAL DAMAGES OR INCIDENTAL EXPENSES INCLUDE, BUT ARE NOT LIMITED TO, SUCH ITEMS AS LOSS OF USE OF THE VEHICLE, LOSS OF TIME, INCONVENIENCE, RENTAL COSTS, ROAD SERVICE CHARGES, TELEPHONE, TRAVEL, LODGING, AND CARGO DAMAGE OR OTHER COMMERCIAL LOSSES. (SOME STATES DO NOT ALLOW THE EXCLUSION OR LIMITATION OF INCIDENTAL OR CONSEQUENTIAL DAMAGES, SO THE ABOVE LIMITATION OR EXCLUSION MAY NOT APPLY TO YOU.)

The intended use of this truck-body is the carrying of cargo. The van body is not designed or built for passenger occupancy, or for the hauling of cargo in excess of its gross vehicle weight rating (GVWR).



---

**Walk-in Vans**





AEROMASTER

## AEROMASTER WALK-IN VAN

Utilimaster's walk-in van is the industry-standard for delivery and service vehicles. Built on a purpose-built chassis ready to shoulder your load, the walk-in van has maximum versatility and interior design capabilities, with a highly modular cargo area and multiple side and rear door configurations. We customize every walk-in van to increase driver productivity and safety. Options include interior fold-up or fixed shelving, E-track systems, cargo load bars, work counters, bins, compartments, and more.





### At a Glance

- Low step-in cab and rear door height provide optimum points of entry and exit
- Full stand-up height in the cab and cargo areas optimize ergonomics

### Chassis and Body Options

Chassis	Available Lengths	Height	Body Width
Ford E Series	12'   14'   16'   17'   18'	81" or 85"	86.5" or 93.5"
Ford F59	14'   16'   17'   18'   20'   22'	81" or 85"	93.5" or 96"
Freightliner MT55	14'   16'   17'   18'   20'   22'   24'   26'   28'   30'	81" or 85"	93.5" or 96"
Freightliner MT45	12'   14'   16'   17'   18'   20'   22'	81" or 85"	86.5" or 93.5"

**BULKHEADS**



Aluminum Bulkhead



Blandex Bulkhead with Sliding Door



Carpet on Front Side Bulkhead

**BUMPERS**



Dock 'D' Bumpers



Gripstrut Bumpers



Shock Bumper



Spring Loop Rear Bumpers



Treadplate Bumpers

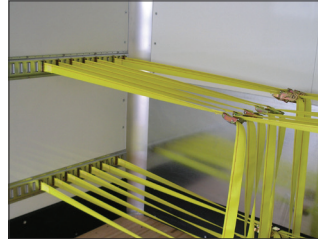
CARGO CONTROL



Cargo Tie Down Rings



E-Track



E-Track Straps



Fixed Aluminum Shelves



Foldable Aluminum Shelves



Garment Rails



Uniform Safe Load System



Wheel Well Racks

DOORS



Bi-Fold Swing Door



Full-Swing Door



Full-Width Overhead Door



Narrow Roll-Up Doors



Narrow-Swing Door



Cab Doors (available options)  
Sliding  
Swing  
Right Hand Only  
Dual

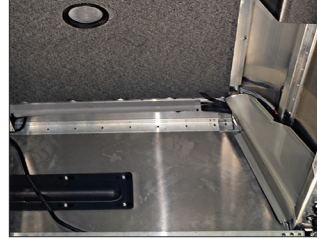
DRIVER CONVENIENCE



Cab A/C



Cab Fans



Cab Insulation



Cab Overhead Compartment - 2 Doors



Cab Worktable



Keyless Entry



Radio



Quarter Panel Air Vents

EXTERIOR LIGHTING



High Mount and Low Mount Rear Stop Lights



Halogen Headlights



Intermediate Side Body Turn Lights

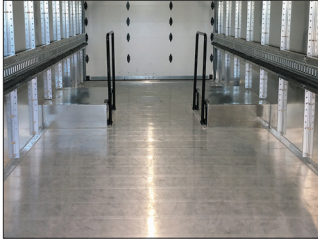


LED Headlights



Scene Lighting

FLOORS



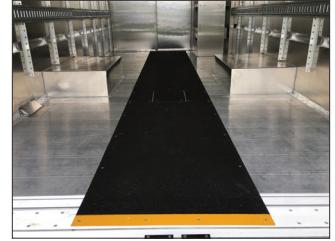
Smooth Aluminum



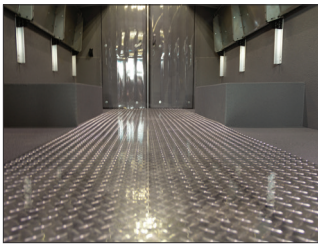
Ribbed Aluminum



Rear Drop Cargo Floor



Surefoot Center Aisle Overlay



Treadplate Overlay

INTERIOR LIGHTING



Cargo Dome Light



Motion Controlled LED Cargo Lights

LIFTGATES / RAMPS



Rear Rail Liftgate



Side Liftgate

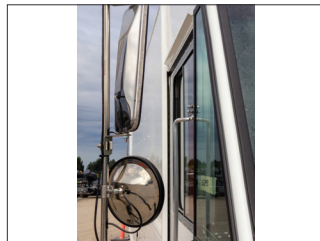


Under Floor Ramp

MIRRORS



Standard Mirrors



Heated Mirrors



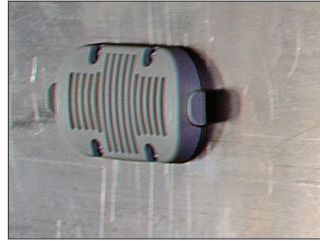
ROOFS



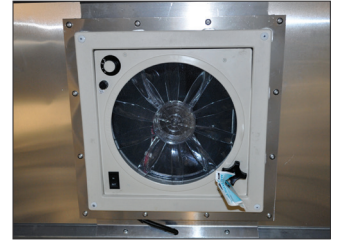
Insulated or Non-Insulated Aluminum Roof



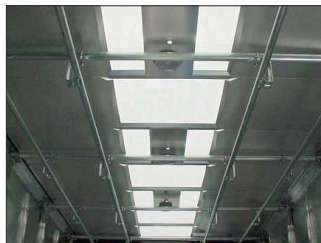
Translucent Roof



Roof Vent



Rotary Roof Vent



Sky Light

SAFETY



360-Camera System



Backup Alarms



Backup Camera



Cab Entry Hand Rail



Collision Avoidance



Fire Extinguisher



Rear Proximity Sensor



Reflector Kit

SEATS



Bulkhead Mounted Jump Seat



Heated & Cooled Driver Seat

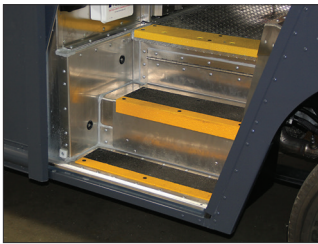


Full Size Passenger Seat



Two-Person Bench Passenger Seat

STEPS



Safety Tread Step Well

WALLS



Aluminum Hat Section



Extra Lower Rub Rail (exterior)



T-Stud Profile Optional 24" Spacing

OTHER



Aluminum Tool Box

## AEROMASTER VAN BODY LIMITED WARRANTY

---

UTILIMASTER, A Shyft Group Brand, warrants that the body shall be free of defects in factory materials and workmanship, under normal use and service, as set forth herein. This LIMITED WARRANTY is issued to the original retail purchaser and is neither transferable to nor enforceable by any other person. This LIMITED WARRANTY is given in lieu of any and all other expressed or implied warranties. Warranted items are specified by period in the following schedule:

### 1-YEAR COVERAGE

Utilimaster warrants all components manufactured or installed by Utilimaster, subject to the exclusions as outlined herein. Utilimaster and/or the supplier reserve the right to request the return of failed parts.

### 3-YEAR COVERAGE

Utilimaster warrants for a period of 3 years the unsatisfactory application of paint when both paint and full body undercoat are applied by Utilimaster. Paint finishing on bumpers, wheels, and roll-up doors is excluded from 3 years and is covered under this warranty for a period of 1 year from date of delivery to the original retail purchaser. Utilimaster reserves the right to request two (2) written estimates for all paint work.

### 5-YEAR COVERAGE

Utilimaster warrants for a period of 5 years or for the first 150,000 miles of operation, whichever shall first occur, the basic body structure. Limited warranty covers the main structural components of the body; included in this coverage are the ceiling, sidewalls, floor, and rear and front wall structures.

Aftermarket or service parts purchased from Utilimaster will be given a 1-year limited warranty from the date of purchase. Except as outlined above, Utilimaster makes no warranty on any part, accessory, or goods manufactured by others that are installed on a Utilimaster Walk-In Van Body. Utilimaster will assign any warranty provided by suppliers to the customer.

### NOT COVERED BY WARRANTY, EXCLUSIONS:

1. Vehicle chassis, engine cab, tires, chassis, and auxiliary batteries (which are warranted separately by the manufacturer thereof).
2. Wheel alignment or damage resulting from misalignment, including any damage caused by tires or tire failure.
3. Electrical, hydraulic, or application-specific components, including components specified or supplied by the customer (which are warranted separately by the manufacturer thereof).
4. Body glass, except improper installation.
5. Any non-Utilimaster parts, accessories, or goods, including those sourced and installed by third parties.
6. Work performed by third parties without pre-authorization and consent from Utilimaster warranty department.
7. Normal wear, usage, or consumable items or conditions resulting from the failure to perform regular maintenance and care.
8. Defects or damage attributable to abuse or misuse of the product, including overloading the vehicle beyond the GVWR and uses of the vehicle for which it was not intended.
9. Damage resulting from failure to promptly notify and comply with the instructions of the manufacturer, Utilimaster, about defects when noted.
10. Items lost, stolen, or damaged in transit of the vehicle from the manufacturer to the original retail purchaser.
11. Deterioration or damage caused by corrosive, hazardous, or otherwise dangerous cargo.

The warranty begins on the date of delivery to the original retail purchaser. ANY IMPLIED WARRANTIES ARE LIMITED IN DURATION TO THE COVERAGE PERIODS OF THIS WARRANTY. It shall be the customer's responsibility to contact Utilimaster before any repairs are made that are covered by or affect this warranty, in order to secure Utilimaster's prior approval. Should a defect in materials or workmanship develop that is attributable to Utilimaster's manufacturing or installation of components and if Utilimaster is immediately notified of said defect, Utilimaster will, in the method it determines, at its sole option to be necessary, repair or replace any such defective component at its own cost and expense, exclusive of freight costs and import duties and/or fees if applicable. Utilimaster reserves the right to require a technician or representative inspect the vehicle or equipment prior to issuing such approval. Utilimaster reserves the right to make changes or modify the design or product without thereby obligating itself to make the same changes or modifications upon its products previously manufactured. Utilimaster's warranty is void if Utilimaster did not provide authorization to perform such work or if the original equipment parts are not used in repairs.

AS THE WARRANTOR, UTILIMASTER SPECIFICALLY EXCLUDES ANY OBLIGATION FOR CONSEQUENTIAL DAMAGES OR INCIDENTAL EXPENSES FOR THE BREACH OF THIS WARRANTY OR ANY IMPLIED WARRANTY. CONSEQUENTIAL DAMAGES OR INCIDENTAL EXPENSES INCLUDE, BUT ARE NOT LIMITED TO, SUCH ITEMS AS LOSS OF USE OF THE VEHICLE, LOSS OF TIME, INCONVENIENCE, RENTAL COSTS, ROAD SERVICE CHARGES, TELEPHONE, TRAVEL, LODGING, AND CARGO DAMAGE OR OTHER COMMERCIAL LOSSES. (SOME STATES DO NOT ALLOW THE EXCLUSION OR LIMITATION OF INCIDENTAL OR CONSEQUENTIAL DAMAGES, SO THE ABOVE LIMITATION OR EXCLUSION MAY NOT APPLY TO YOU.)

The intended use of this van body is the carrying of cargo. The van body is not designed or built for passenger occupancy, or for the hauling of cargo in excess of its gross vehicle weight rating (GVWR).



VELOCITY F-SERIES

## VELOCITY F-SERIES

The Velocity F-Series offers nimbleness, comfort, and fuel efficiency, as well as the easy access and storage capacity of a WIV, and it is available in both class 2 and class 3. It's the perfect solution for efficient deliveries.





### At a Glance

- Low step entry reduces strain on the ankles and knees
- Flat floor throughout from cab to cargo
- Formed aluminum bulkhead reduces noise and vibration

### Chassis and Body Options

Chassis	Model	Length	GVWR
Ford Transit	F2	12'   14'   16'	9,950
Ford Transit	F3	12'   14'   16'	10,360

**BULKHEADS**



Aluminum Bulkhead with Sliding Door



Carpet on Front Side Bulkhead

**BUMPERS**



Shock Bumper



Gripstrut Bumpers



Dock 'D' Bumpers

---



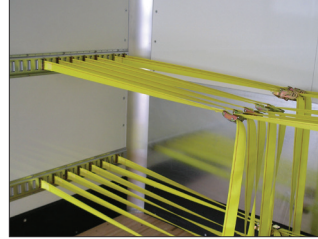
**CARGO CONTROL**



Cargo Tie Down Rings



E-Track



E-Track Straps



Fixed Aluminum Shelves



Foldable Aluminum Shelves



Garment Rails



Wheel Well Racks

---

**DRIVER CONVENIENCE**



Keyless Entry

EXTERIOR LIGHTING



Scene Lighting

FLOORS



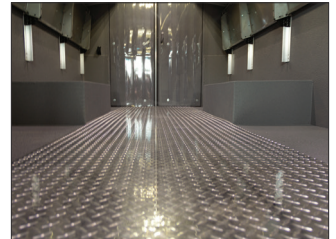
Standard Aluminum



Ribbed Aluminum



Surefoot Center Aisle

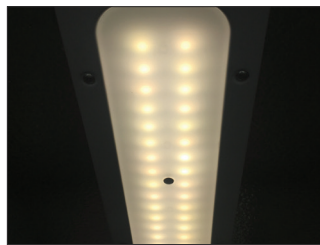


Treadplate

INTERIOR LIGHTING



Cargo Dome Light



Motion Controlled LED Cargo Lights

---

LIFTGATES / RAMPS



Rear Rail Liftgate

REAR DOORS



Rear Swing Doors



Rear Roll-Up Doors

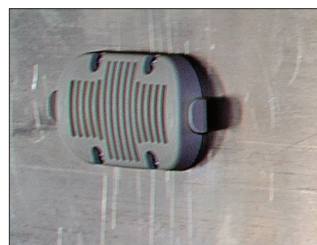
ROOFS



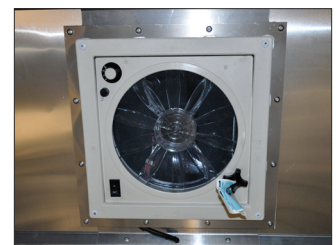
Aluminum Roof



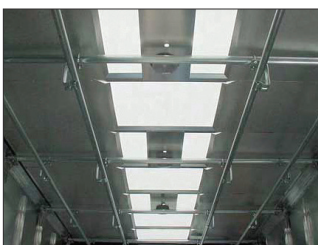
Translucent Roof



Passive Roof Vent



Powered Roof Vent



Sky Light

SAFETY



360-Camera System



Backup Alarms



Backup Camera



Cab Entry Hand Rail



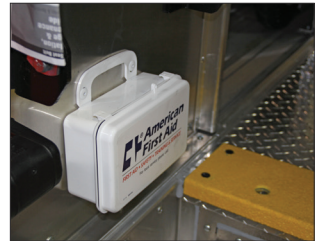
Fire Extinguisher



Rear Proximity Sensor



Reflector Kit



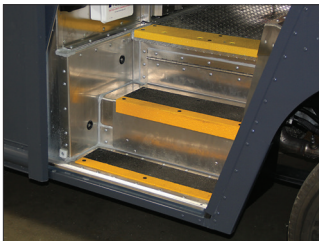
First Aid Kit

**SEATS**



Bulkhead Mounted Jump Seat

**STEPS**



Safety Tread Step Well

**WALLS**



T-Stud Profile Optional 24" Spacing

---

## VELOCITY F-SERIES LIMITED WARRANTY

---

UTILIMASTER, A Shyft Group Brand, warrants that the body shall be free of defects in factory materials and workmanship, under normal use and service, as set forth herein. This LIMITED WARRANTY is issued to the original retail purchaser and is neither transferable to nor enforceable by any other person. This LIMITED WARRANTY is given in lieu of any and all other expressed or implied warranties. Warranted items are specified by period in the following schedule:

### 1-YEAR COVERAGE

Utilimaster warrants all components manufactured or installed by Utilimaster, subject to the exclusions as outlined herein. Utilimaster and/or the supplier reserve the right to request the return of failed parts.

### 3-YEAR COVERAGE

Utilimaster warrants for a period of 3 years the unsatisfactory application of paint when both paint and full body undercoat are applied by Utilimaster. Paint finishing on bumpers, wheels, and roll-up doors is excluded from 3 years and is covered under this warranty for a period of 1 year from date of delivery to the original retail purchaser. Utilimaster reserves the right to request two (2) written estimates for all paint work.

### 5-YEAR COVERAGE

Utilimaster warrants for a period of 5 years or for the first 150,000 miles of operation, whichever shall first occur, the basic body structure. Limited warranty covers the main structural components of the body; included in this coverage are the ceiling, sidewalls, floor, and rear and front wall structures.

Aftermarket or service parts purchased from Utilimaster will be given a 1-year limited warranty from the date of purchase. Except as outlined above, Utilimaster makes no warranty on any part, accessory, or goods manufactured by others that are installed on a Utilimaster Walk-In Van Body. Utilimaster will assign any warranty provided by suppliers to the customer.

### NOT COVERED BY WARRANTY, EXCLUSIONS:

1. Vehicle chassis, engine cab, tires, chassis, and auxiliary batteries (which are warranted separately by the manufacturer thereof).
2. Wheel alignment or damage resulting from misalignment, including any damage caused by tires or tire failure.
3. Electrical, hydraulic, or application-specific components, including components specified or supplied by the customer (which are warranted separately by the manufacturer thereof).
4. Body glass, except improper installation.
5. Any non-Utilimaster parts, accessories, or goods, including those sourced and installed by third parties.
6. Work performed by third parties without pre-authorization and consent from Utilimaster warranty department.
7. Normal wear, usage, or consumable items or conditions resulting from the failure to perform regular maintenance and care.
8. Defects or damage attributable to abuse or misuse of the product, including overloading the vehicle beyond the GVWR and uses of the vehicle for which it was not intended.
9. Damage resulting from failure to promptly notify and comply with the instructions of the manufacturer, Utilimaster, about defects when noted.
10. Items lost, stolen, or damaged in transit of the vehicle from the manufacturer to the original retail purchaser.
11. Deterioration or damage caused by corrosive, hazardous, or otherwise dangerous cargo.

The warranty begins on the date of delivery to the original retail purchaser. ANY IMPLIED WARRANTIES ARE LIMITED IN DURATION TO THE COVERAGE PERIODS OF THIS WARRANTY. It shall be the customer's responsibility to contact Utilimaster before any repairs are made that are covered by or affect this warranty, in order to secure Utilimaster's prior approval. Should a defect in materials or workmanship develop that is attributable to Utilimaster's manufacturing or installation of components and if Utilimaster is immediately notified of said defect, Utilimaster will, in the method it determines, at its sole option to be necessary, repair or replace any such defective component at its own cost and expense, exclusive of freight costs and import duties and/or fees if applicable. Utilimaster reserves the right to require a technician or representative inspect the vehicle or equipment prior to issuing such approval. Utilimaster reserves the right to make changes or modify the design or product without thereby obligating itself to make the same changes or modifications upon its products previously manufactured. Utilimaster's warranty is void if Utilimaster did not provide authorization to perform such work or if the original equipment parts are not used in repairs.

AS THE WARRANTOR, UTILIMASTER SPECIFICALLY EXCLUDES ANY OBLIGATION FOR CONSEQUENTIAL DAMAGES OR INCIDENTAL EXPENSES FOR THE BREACH OF THIS WARRANTY OR ANY IMPLIED WARRANTY. CONSEQUENTIAL DAMAGES OR INCIDENTAL EXPENSES INCLUDE, BUT ARE NOT LIMITED TO, SUCH ITEMS AS LOSS OF USE OF THE VEHICLE, LOSS OF TIME, INCONVENIENCE, RENTAL COSTS, ROAD SERVICE CHARGES, TELEPHONE, TRAVEL, LODGING, AND CARGO DAMAGE OR OTHER COMMERCIAL LOSSES. (SOME STATES DO NOT ALLOW THE EXCLUSION OR LIMITATION OF INCIDENTAL OR CONSEQUENTIAL DAMAGES, SO THE ABOVE LIMITATION OR EXCLUSION MAY NOT APPLY TO YOU.)

The intended use of this van body is the carrying of cargo. The van body is not designed or built for passenger occupancy, or for the hauling of cargo in excess of its gross vehicle weight rating (GVWR).



VELOCITY M-SERIES

## VELOCITY M3

The innovative all-new Velocity M3 from Utilimaster is changing the proficiency of delivery and service. It combines nimbleness, comfort, and fuel efficiency with the cargo space, access, and capacity of a walk-in van. Built with innovative features that improve cargo access, delivery efficiency, and driver comfort, Velocity M3 is the industry's most unique walk-in van that promises to accelerate business with unprecedented new speed.







### At a Glance

- Wider bulkhead doors
- Easy entry and egress
- Innovative safety features

### Chassis and Body Options

Chassis	Length	GVWR
Mercedes Sprinter	12'   14.5'	12,125

---

**BULKHEADS**



Aluminum Bulkhead with Sliding Door



Carpet on Front Side Bulkhead

---

**BUMPERS**



Shock Bumper



Gripstrut Bumpers



Dock 'D' Bumpers

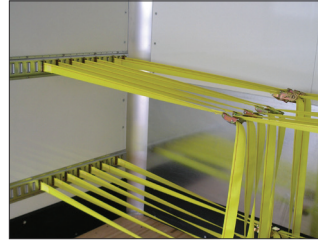
**CARGO CONTROL**



Cargo Tie Down Rings



E-Track



E-Track Straps



Fixed Aluminum Shelves



Foldable Aluminum Shelves



Garment Rails



Wheel Well Racks

**DRIVER CONVENIENCE**



Keyless Entry

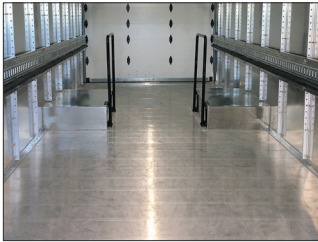
---

**EXTERIOR LIGHTING**

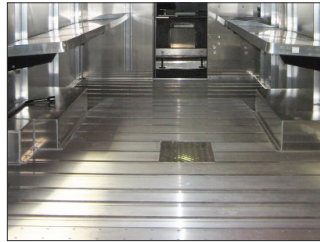


Scene Lighting

**FLOORS**



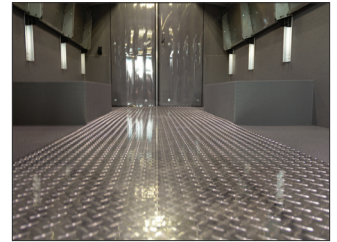
Standard Aluminum



Ribbed Aluminum



Surefoot Center Aisle

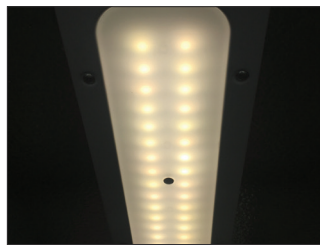


Treadplate

**INTERIOR LIGHTING**



Cargo Dome Light



Motion Controlled LED Cargo Lights

REAR DOORS



Rear Swing Doors



Rear Roll-Up Doors

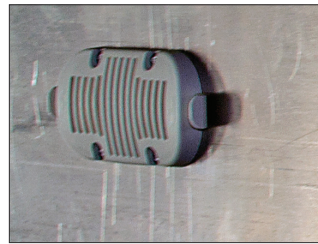
ROOFS



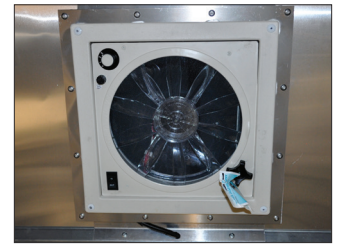
Aluminum Roof



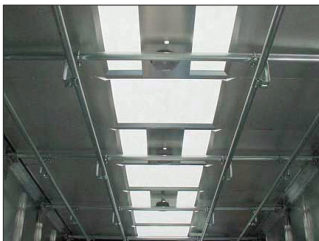
Translucent Roof



Roof Vent



Rotary Roof Vent



Sky Light

SAFETY



360-Camera System



Backup Alarms



Backup Camera



Cab Entry Hand Rail



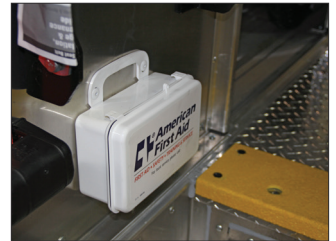
Fire Extinguisher



Rear Proximity Sensor



Reflector Kit



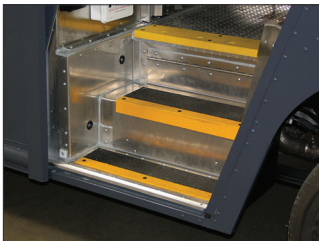
First Aid Kit

**SEATS**



Bulkhead Mounted Jump Seat

**STEPS**



Safety Tread Step Well

**WALLS**



T-Stud Profile Optional 24" Spacing

---

## VELOCITY M-SERIES LIMITED WARRANTY

---

UTILIMASTER, A Shyft Group Brand, warrants that the body shall be free of defects in factory materials and workmanship, under normal use and service, as set forth herein. This LIMITED WARRANTY is issued to the original retail purchaser and is neither transferable to nor enforceable by any other person. This LIMITED WARRANTY is given in lieu of any and all other expressed or implied warranties. Warranted items are specified by period in the following schedule:

### 1-YEAR COVERAGE

Utilimaster warrants all components manufactured or installed by Utilimaster, subject to the exclusions as outlined herein. Utilimaster and/or the supplier reserve the right to request the return of failed parts.

### 3-YEAR COVERAGE

Utilimaster warrants for a period of 3 years the unsatisfactory application of paint when both paint and full body undercoat are applied by Utilimaster. Paint finishing on bumpers, wheels, and roll-up doors is excluded from 3 years and is covered under this warranty for a period of 1 year from date of delivery to the original retail purchaser. Utilimaster reserves the right to request two (2) written estimates for all paint work.

### 5-YEAR COVERAGE

Utilimaster warrants for a period of 5 years or for the first 150,000 miles of operation, whichever shall first occur, the basic body structure. Limited warranty covers the main structural components of the body; included in this coverage are the ceiling, sidewalls, floor, and rear and front wall structures.

Aftermarket or service parts purchased from Utilimaster will be given a 1-year limited warranty from the date of purchase. Except as outlined above, Utilimaster makes no warranty on any part, accessory, or goods manufactured by others that are installed on a Utilimaster Walk-In Van Body. Utilimaster will assign any warranty provided by suppliers to the customer.

### NOT COVERED BY WARRANTY, EXCLUSIONS:

1. Vehicle chassis, engine cab, tires, chassis, and auxiliary batteries (which are warranted separately by the manufacturer thereof).
2. Wheel alignment or damage resulting from misalignment, including any damage caused by tires or tire failure.
3. Electrical, hydraulic, or application-specific components, including components specified or supplied by the customer (which are warranted separately by the manufacturer thereof).
4. Body glass, except improper installation.
5. Any non-Utilimaster parts, accessories, or goods, including those sourced and installed by third parties.
6. Work performed by third parties without pre-authorization and consent from Utilimaster warranty department.
7. Normal wear, usage, or consumable items or conditions resulting from the failure to perform regular maintenance and care.
8. Defects or damage attributable to abuse or misuse of the product, including overloading the vehicle beyond the GVWR and uses of the vehicle for which it was not intended.
9. Damage resulting from failure to promptly notify and comply with the instructions of the manufacturer, Utilimaster, about defects when noted.
10. Items lost, stolen, or damaged in transit of the vehicle from the manufacturer to the original retail purchaser.
11. Deterioration or damage caused by corrosive, hazardous, or otherwise dangerous cargo.

The warranty begins on the date of delivery to the original retail purchaser. ANY IMPLIED WARRANTIES ARE LIMITED IN DURATION TO THE COVERAGE PERIODS OF THIS WARRANTY. It shall be the customer's responsibility to contact Utilimaster before any repairs are made that are covered by or affect this warranty, in order to secure Utilimaster's prior approval. Should a defect in materials or workmanship develop that is attributable to Utilimaster's manufacturing or installation of components and if Utilimaster is immediately notified of said defect, Utilimaster will, in the method it determines, at its sole option to be necessary, repair or replace any such defective component at its own cost and expense, exclusive of freight costs and import duties and/or fees if applicable. Utilimaster reserves the right to require a technician or representative inspect the vehicle or equipment prior to issuing such approval. Utilimaster reserves the right to make changes or modify the design or product without thereby obligating itself to make the same changes or modifications upon its products previously manufactured. Utilimaster's warranty is void if Utilimaster did not provide authorization to perform such work or if the original equipment parts are not used in repairs.

AS THE WARRANTOR, UTILIMASTER SPECIFICALLY EXCLUDES ANY OBLIGATION FOR CONSEQUENTIAL DAMAGES OR INCIDENTAL EXPENSES FOR THE BREACH OF THIS WARRANTY OR ANY IMPLIED WARRANTY. CONSEQUENTIAL DAMAGES OR INCIDENTAL EXPENSES INCLUDE, BUT ARE NOT LIMITED TO, SUCH ITEMS AS LOSS OF USE OF THE VEHICLE, LOSS OF TIME, INCONVENIENCE, RENTAL COSTS, ROAD SERVICE CHARGES, TELEPHONE, TRAVEL, LODGING, AND CARGO DAMAGE OR OTHER COMMERCIAL LOSSES. (SOME STATES DO NOT ALLOW THE EXCLUSION OR LIMITATION OF INCIDENTAL OR CONSEQUENTIAL DAMAGES, SO THE ABOVE LIMITATION OR EXCLUSION MAY NOT APPLY TO YOU.)

The intended use of this van body is the carrying of cargo. The van body is not designed or built for passenger occupancy, or for the hauling of cargo in excess of its gross vehicle weight rating (GVWR).





---

**Cargo Van Upfits**



CARGO VAN UPFIT

## CARGO VAN UPFIT

With more than 40 years and thousands of miles of ride-alongs, Utilimaster is the master at upfitting cargo and utility vans. We've redefined and streamlined the upfit process so you can work with one partner, one team, and one P.O. to get everything you need done. Once we've studied your specs and fleet needs, we bring together the finest suppliers of shelving, storage, bulkhead partitions, ladder racks, refrigeration, HVAC, lighting, and whatever your vans need to run safely, efficiently, and economically.





### At a Glance

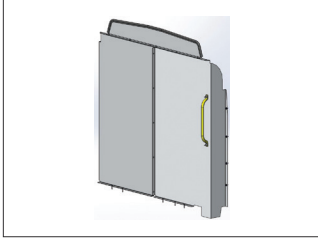
- Ideal for urban delivery routes
- Fuel efficient
- Customizable upfits
- OEM ship-thru available

### Chassis and Body Options

Make	Wheelbase	Roof Height
Ford Transit	130" (Regular)   148" (Long)   148" (Long-EL)	Low   Mid   High
Mercedes Sprinter	144"   170"   170" Extended	Standard   High   Super High
Metris	126"   135"	Standard
RAM Promaster	118"   136"   159"   159" Extended	Standard   High

---

**BULKHEADS**



Sliding Door



Solid Door



Swing Door

---

**BUMPERS**

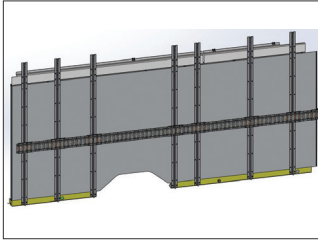


Step Bumper

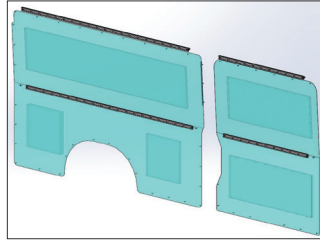


Shock Bumper

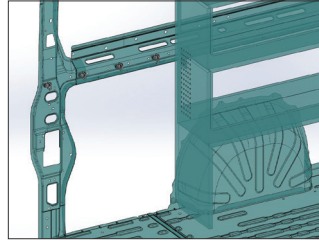
CARGO CONTROL



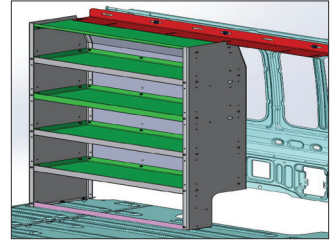
E-Track



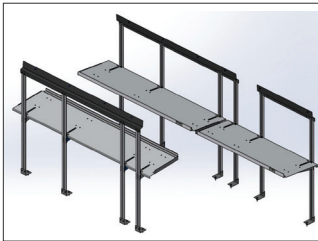
L-Track



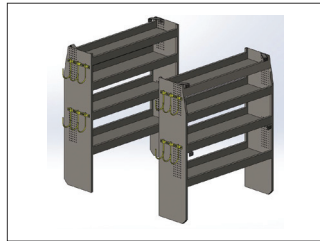
D-Rings



Fixed Shelving



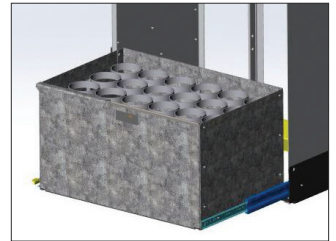
Folding Shelves



Racking



Bins



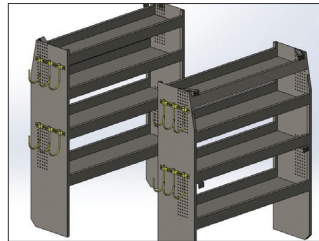
Drawers



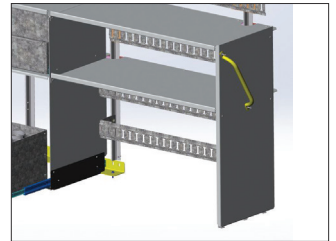
Lockers



Cargo Netting



Hooks

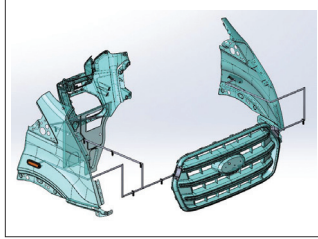


Tank Racks

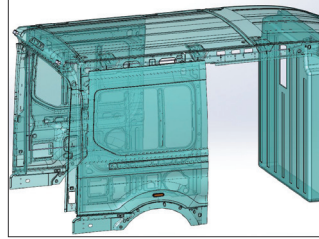
EXTERIOR LIGHTING



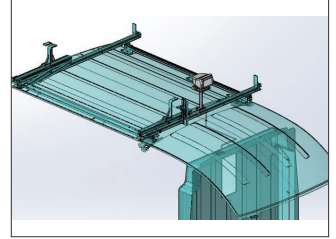
Exterior Lighting



Front Strobes



Rear Strobes



Remote-Controlled Spots



Rear Scene Lighting

INTERIOR LIGHTING



Motion-Controlled LEDs



Overhead Cargo Light

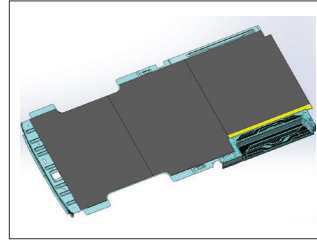
FLOORS



Heavy Duty Floor Overlay



Spray Liners



Sure Foot



Carpet



Wheel Well Covers



Floor with Sill Plates

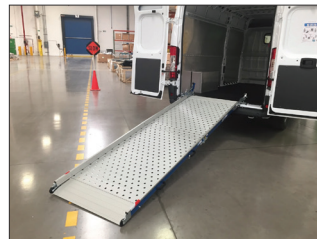
LIFTGATES / RAMPS



Folding Liftgate



Platform Ramp



Folding / Swivel Ramp

ROOFS



Ladder Rack



Material Rack



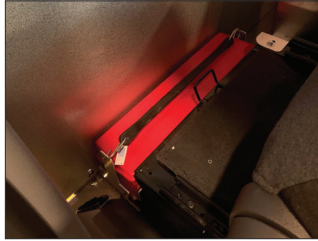
Raised Headliner



SAFETY



Fire Extinguisher



Triangle Kit



First Aid Kit



Always on Rear Camera



360-Camera



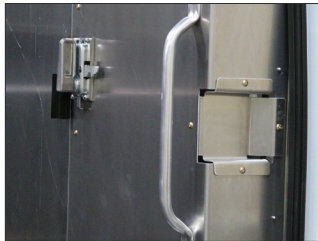
Backup Alarms



Backup Sensors



Telematics



Grab Handles



Safe-T-Tread



Front Bumper Placard



Camera Monitor

WALL LINERS



Plastic



Aluminum

OTHER



Dollies and Folding Carts



Auxiliary Power Systems

## CARGO VAN UPFIT OPTIONS

---

UTILIMASTER, A Shyft Group Brand, warrants that the body shall be free of defects in factory materials and workmanship, under normal use and service, as set forth herein. This LIMITED WARRANTY is issued to the original retail purchaser and is neither transferable to nor enforceable by any other person. This LIMITED WARRANTY is given in lieu of any and all other expressed or implied warranties. Warranted items are specified by period in the following schedule:

### 1-YEAR COVERAGE

Utilimaster warrants all components manufactured or installed by Utilimaster, subject to the exclusions as outlined herein. Utilimaster and/or the supplier reserve the right to request the return of failed parts.

### 3-YEAR COVERAGE

Utilimaster warrants for a period of 3 years the unsatisfactory application of paint when both paint and full body undercoat are applied by Utilimaster. Paint finishing on bumpers, wheels, and roll-up doors is excluded from 3 years and is covered under this warranty for a period of 1 year from date of delivery to the original retail purchaser. Utilimaster reserves the right to request two (2) written estimates for all paint work.

### 5-YEAR COVERAGE

Utilimaster warrants for a period of 5 years or for the first 150,000 miles of operation, whichever shall first occur, the basic body structure. Limited warranty covers the main structural components of the body; included in this coverage are the ceiling, sidewalls, floor, and rear and front wall structures.

Aftermarket or service parts purchased from Utilimaster will be given a 1-year limited warranty from the date of purchase. Except as outlined above, Utilimaster makes no warranty on any part, accessory, or goods manufactured by others that are installed on a Utilimaster Walk-In Van Body. Utilimaster will assign any warranty provided by suppliers to the customer.

### NOT COVERED BY WARRANTY, EXCLUSIONS:

1. Vehicle chassis, engine cab, tires, chassis, and auxiliary batteries (which are warranted separately by the manufacturer thereof).
2. Wheel alignment or damage resulting from misalignment, including any damage caused by tires or tire failure.
3. Electrical, hydraulic, or application-specific components, including components specified or supplied by the customer (which are warranted separately by the manufacturer thereof).
4. Body glass, except improper installation.
5. Any non-Utilimaster parts, accessories, or goods, including those sourced and installed by third parties.
6. Work performed by third parties without pre-authorization and consent from Utilimaster warranty department.
7. Normal wear, usage, or consumable items or conditions resulting from the failure to perform regular maintenance and care.
8. Defects or damage attributable to abuse or misuse of the product, including overloading the vehicle beyond the GVWR and uses of the vehicle for which it was not intended.
9. Damage resulting from failure to promptly notify and comply with the instructions of the manufacturer, Utilimaster, about defects when noted.
10. Items lost, stolen, or damaged in transit of the vehicle from the manufacturer to the original retail purchaser.
11. Deterioration or damage caused by corrosive, hazardous, or otherwise dangerous cargo.

The warranty begins on the date of delivery to the original retail purchaser. ANY IMPLIED WARRANTIES ARE LIMITED IN DURATION TO THE COVERAGE PERIODS OF THIS WARRANTY. It shall be the customer's responsibility to contact Utilimaster before any repairs are made that are covered by or affect this warranty, in order to secure Utilimaster's prior approval. Should a defect in materials or workmanship develop that is attributable to Utilimaster's manufacturing or installation of components and if Utilimaster is immediately notified of said defect, Utilimaster will, in the method it determines, at its sole option to be necessary, repair or replace any such defective component at its own cost and expense, exclusive of freight costs and import duties and/or fees if applicable. Utilimaster reserves the right to require a technician or representative inspect the vehicle or equipment prior to issuing such approval. Utilimaster reserves the right to make changes or modify the design or product without thereby obligating itself to make the same changes or modifications upon its products previously manufactured. Utilimaster's warranty is void if Utilimaster did not provide authorization to perform such work or if the original equipment parts are not used in repairs.

AS THE WARRANTOR, UTILIMASTER SPECIFICALLY EXCLUDES ANY OBLIGATION FOR CONSEQUENTIAL DAMAGES OR INCIDENTAL EXPENSES FOR THE BREACH OF THIS WARRANTY OR ANY IMPLIED WARRANTY. CONSEQUENTIAL DAMAGES OR INCIDENTAL EXPENSES INCLUDE, BUT ARE NOT LIMITED TO, SUCH ITEMS AS LOSS OF USE OF THE VEHICLE, LOSS OF TIME, INCONVENIENCE, RENTAL COSTS, ROAD SERVICE CHARGES, TELEPHONE, TRAVEL, LODGING, AND CARGO DAMAGE OR OTHER COMMERCIAL LOSSES. (SOME STATES DO NOT ALLOW THE EXCLUSION OR LIMITATION OF INCIDENTAL OR CONSEQUENTIAL DAMAGES, SO THE ABOVE LIMITATION OR EXCLUSION MAY NOT APPLY TO YOU.)

The intended use of this van body is the carrying of cargo. The van body is not designed or built for passenger occupancy, or for the hauling of cargo in excess of its gross vehicle weight rating (GVWR).