



SPARTAN: LUNCHBOX LOCKER

OVERVIEW OF A SPARTAN

This automatic locker replaces the stock side and pinion gears while utilizing the factory open differential case. A new and stronger center pin fits in oval slots between two inner drivers. Under load the center pin forces the inner drivers outward to engage the outer axle couplers on each side of the case. This provides locked power to both drive wheels, providing greater traction. When turning, one driver is unloaded and the teeth can ratchet across each other creating differential action to reduce tire wear and make turning the vehicle easier. This is one of the most economical lockers on the market today.

PRODUCT ADD-ON OPPORTUNITIES

When a Spartan Locker is sold, it is beneficial to sell a Differential Installation Kit since you will have everything opened up.

This is a great opportunity to replace all of your bearings, seals, bolts, crush sleeve, shims and other small parts.

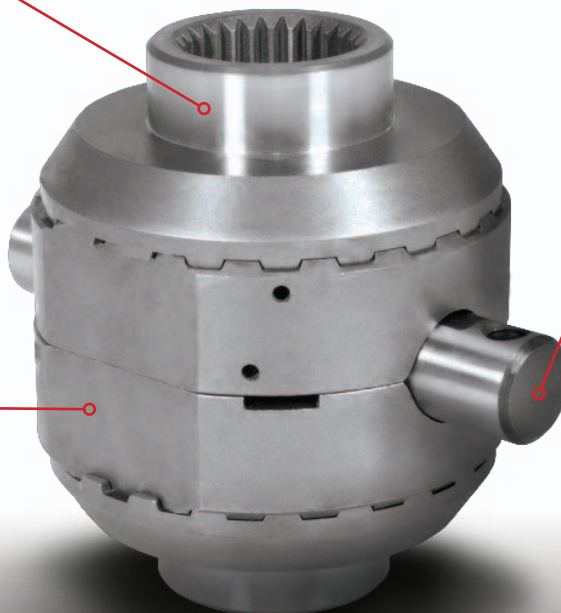
DIFFERENTIAL INSTALLATION KIT



ANATOMY OF A SPARTAN LOCKER

DRIVER: Mates to the axle shaft and engages the coupler.

COUPLER: Rides on the cross pin shaft and mates to the coupler.



CROSS PIN SHAFT: Holds the driver & coupler assembly into the carrier case.

SPARTAN: LUNCHBOX LOCKER

USA STANDARD



Spartan Locker®

Assurance, confidence and reliability make the Spartan Locker a perfect choice. The Spartan Locker by USA Standard Gear is a mechanical locker that replaces the spiders in a standard case. The Locker's design excludes thrust washers & offers a revolutionary spring & pin design making installation a snap!

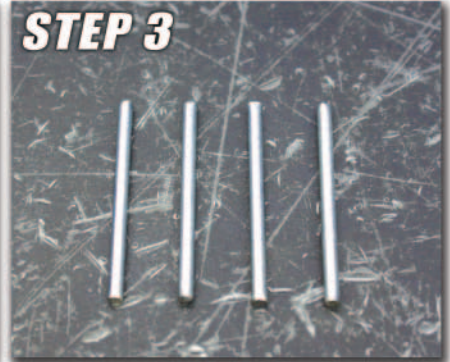
HOW TO INSTALL A SPARTAN LOCKER



STEP 1
Place springs in hollow end of alignment pins



STEP 2
Install alignment pins/springs into driver holes



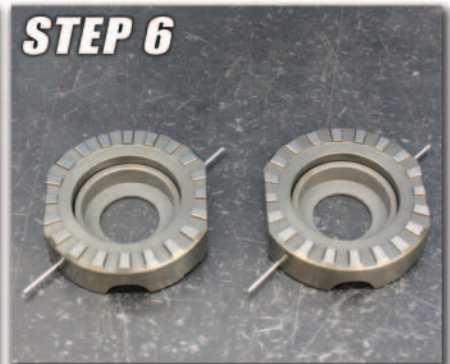
STEP 3
Set aside retainer wires



STEP 4
Push alignment pin/spring assembly down & secure with retainer wire



STEP 5
Install side couplers into carrier case



STEP 6
Install spacers into the center drivers



STEP 7
Install center driver & spacers



STEP 8
Align the center drivers to correct position & remove retainer wires