



AIR DITCHER

AIR TO COIL CONVERSION KIT

1990 - 2000 Lexus LS400



This product is intended to modify your vehicle and replace the existing air controlled suspension components with a passive coil and shock system. The system has been designed and extensively tested to provide the same ride quality and height as the O.E.M. system.



This conversion kit requires the removal of the stock coil spring, which may be under compression. Proper procedure must be followed to minimize risk of personal injury and product damage.

General Precautions

When servicing any vehicle be sure to follow all safety procedures.

First, make sure that when lifting the vehicle that you are using the appropriate jack for the weight of the vehicle.

Make sure before going underneath any vehicle that it is properly supported with sturdy jack stands and on level ground so that the vehicle doesn't fall or slide off of the jack and onto you.

As with any automotive repair, make sure you have the appropriate tools to do the job so you don't damage any parts on the vehicle. There is a list of tools needed included in these instructions.

Safety glasses and mechanic gloves should also be worn for your protection.

Be sure to follow the instructions in the order that they are given. The instructions are in a certain order for a reason and improper installation could lead to damage to your vehicle or the parts. Keep in mind that if you damage the parts during installation you will be responsible for the replacement parts.

Included In This Conversion Kit

2x Complete Strut Assemblies



Minimum Tools Needed For This Installation



Metric Hand Tools (Sockets/Wrenches)



Jack and Jackstands



WARNING

Our complete strut assemblies are completely assembled from the factory. These units contain a coil spring under compression. DO NOT ever loosen the top mount main bolt for prevention of both physical harm and vehicle damage.

CAUTION

Once you are ready to disable the ride light, you will need to disconnect the ground battery cable (-) to prevent electrical shock and/or malfunction.

Instructions

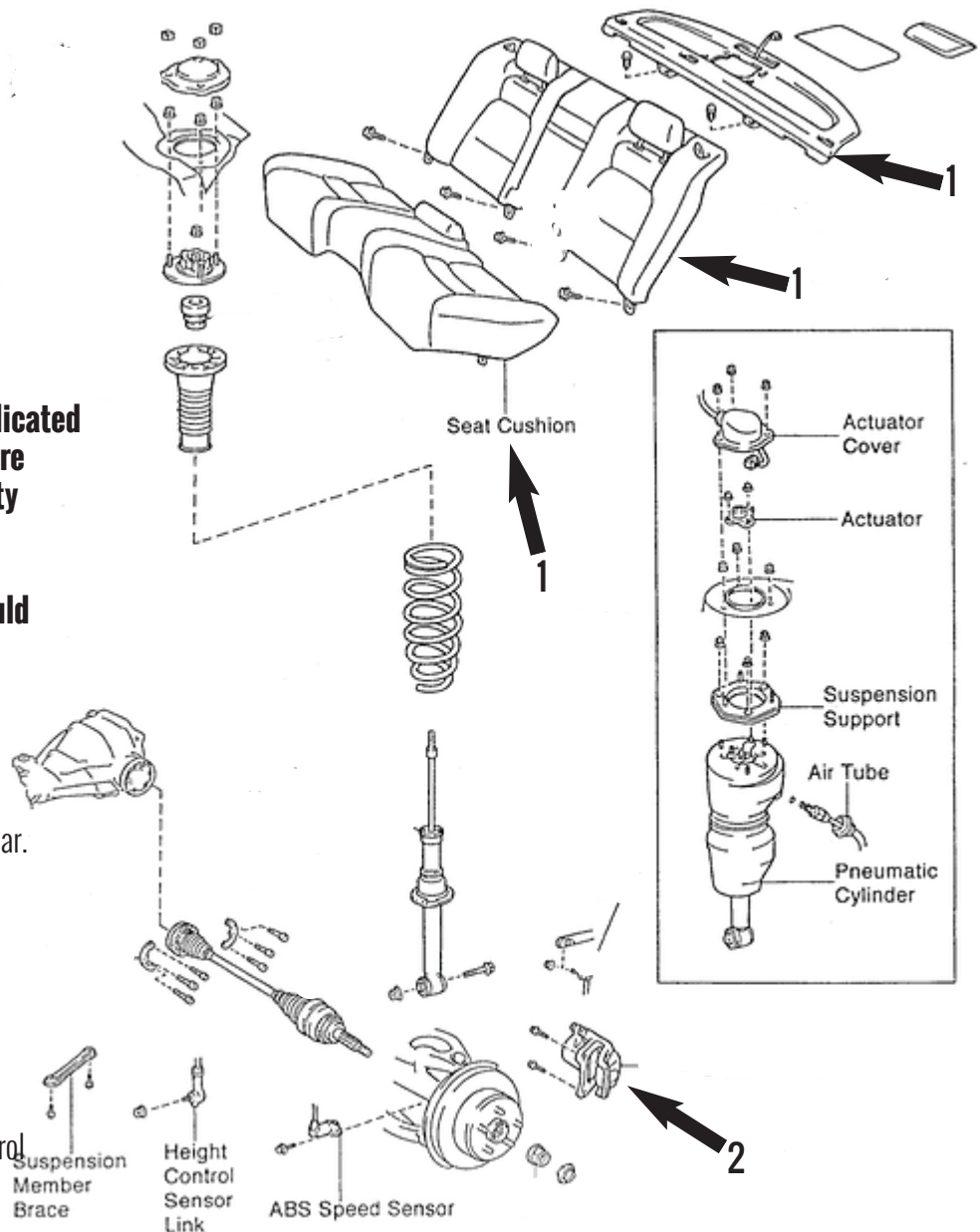
1. Remove rear wheel.
2. Bleed air.
3. Remove the rear seat cushion, rear seat back and package tray trim. (1)
4. Remove rear drive shaft.

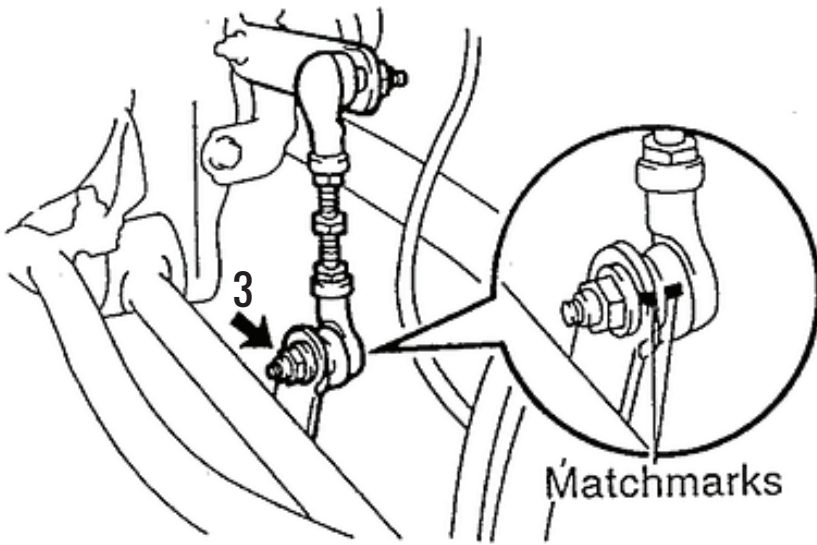
The removal of the rear drive shaft is a complicated and potentially dangerous operation. If you are not completely sure of your mechanical ability and knowledge, please bring your vehicle to a certified mechanic. If you are confident of your ability to replace the driveshaft and would like instructions on how to do so, please visit our page: <http://unityap.com/61590c>

5. Disconnect stabilizer bar links.
Disconnect the stabilizer bar link from stabilizer bar.
6. Remove rear brake caliper. (2)
7. Disconnect height control sensor link.
Images are continued on the next page

- a. Place matchmarks on the link and bracket. (3)
- b. Remove the nut and disconnect the height control sensor link (4).

8. Loosen bolt on lower side of pneumatic cylinder.
Do not remove the bolt.
b. Support the rear axle carrier with a jack.





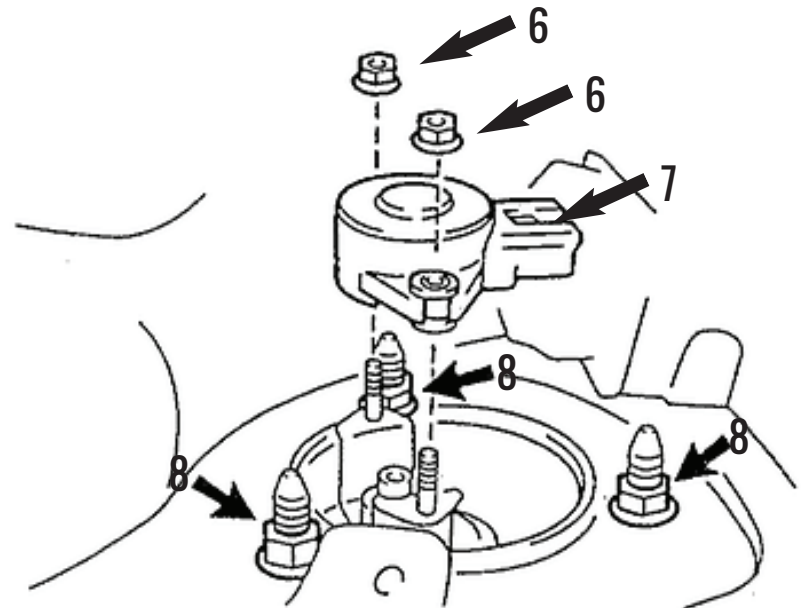
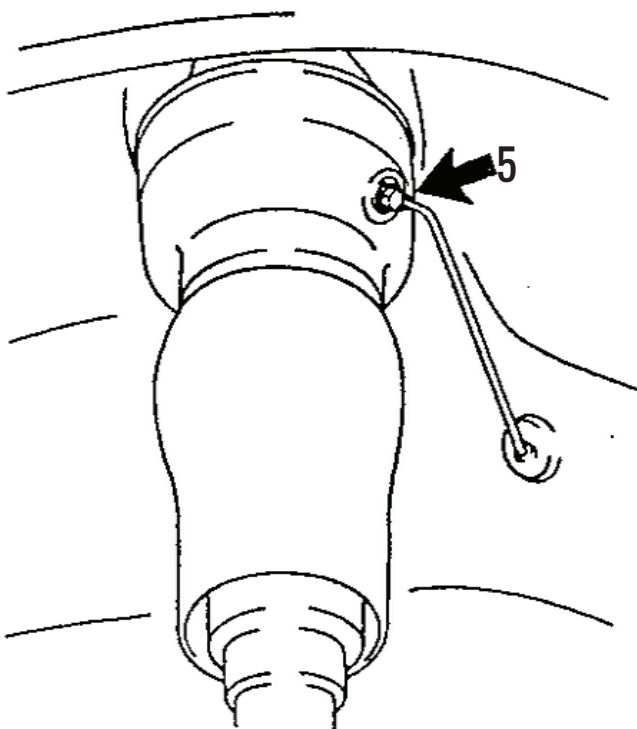
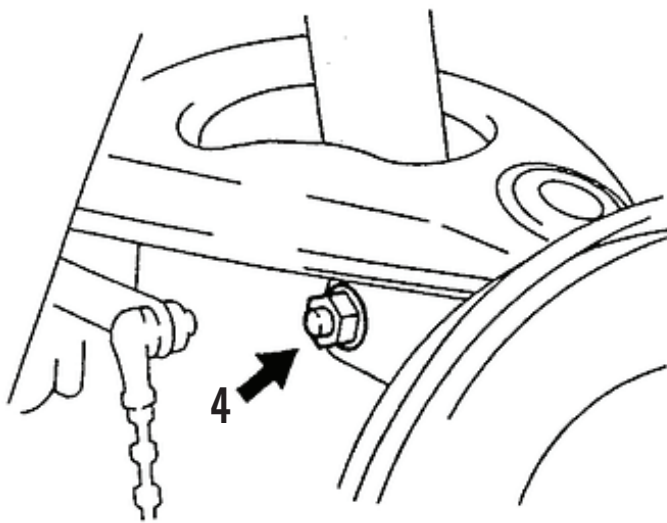
9. Disconnect the air tube from the pneumatic cylinder. (5)

10. Remove suspension control actuator.
- Remove the 3 nuts and actuator cover. (6)
 - Disconnect the actuator connector. (7)
 - Remove the 2 nut and actuator.

11. Remove pneumatic cylinder.
- Remove the 3 nuts. (8)
 - Lower the rear axle carrier and remove the bolt on lower side of pneumatic cylinder.

Remove the pneumatic cylinder.

Replace the pneumatic cylinder with the supplied 65190c complete strut assembly



Torque Specifications

Rear Wheel	76 ft lbs
Stabilizer Bar Links	48 ft lbs
Height Control Sensor	48 inch lbs
Lower Strut Attachment Bolt	101 ft lbs
Upper Strut Mount	47 ft lbs
Suspension Support	27 ft lbs