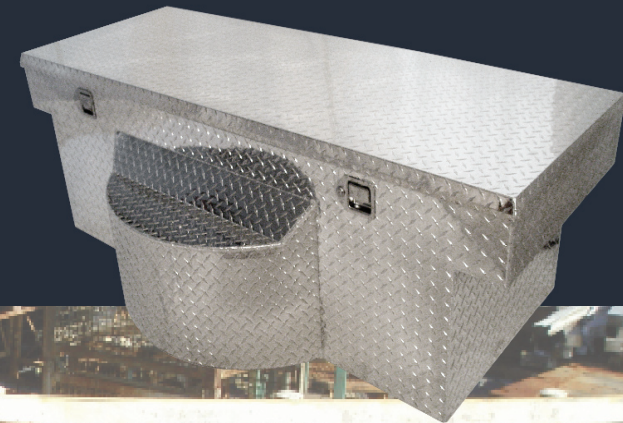




**BUILT FOR THE JOB**

# TIREBOX

TireBox is designed to securely stow your spare tire as well as give you room for the tools you need for the job. The Aluminum single lid crossover box suspends from the sides of your pickup truck, leaving room underneath. The lid opens to a full 90° for easy access and storage. With TireBox, you will be able to store everything you need with room to spare!



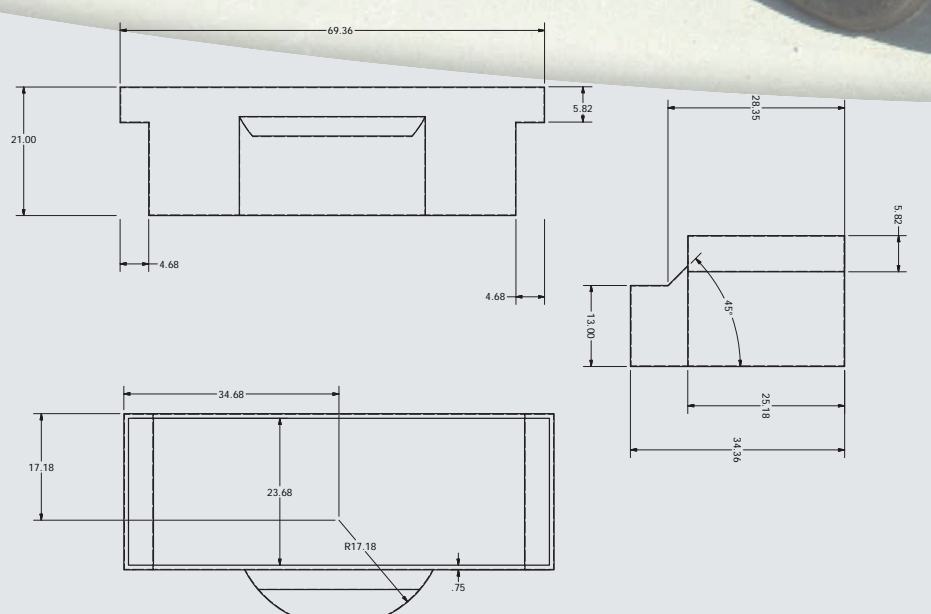
Reinforced aluminum frame

Locking paddle handles

Gas shocks for lid

Aluminum tray and tool organizers

Description	Truck Models	Part Number	Dimensions (in)	
			A	B
Standard crossover box with paddle latches on front	Most full-size trucks; Chevy models	48002000	69-1/2"	60"
HD crossover box with push-button locks on sides		48002000HD	69-1/2"	60"
HD chest box (in-bed) with push-button locks on sides		48002100HD	60"	60"
Standard crossover box with paddle latches on front	99-C Ford Super Duty; '04-C F150; '03-C Dodge Ram	48002005	73-1/2"	62"
HD crossover box with push-button locks on sides		48002005HD	73-1/2"	62"
HD chest box (in-bed) with push-button locks on sides		48002105HD	62"	62"



## Quic 'n Easy & Cush 'n Combo

### Chevy-GMC Mounting Kits

Truck Model	Year	Bed	Frame	Part Number
1500 New Body Style	1999-2009	All	42"	47082080
1500 Old Body Style	1988-1999	All	37"	47082020
2500 NBS	1999-2004	All	42"	47082080
2500 OBS	1988-1999	All	37"	47082020
2500 NBS, H Duty	2001-2009	Long Bed	42"	47082021
2500 NBS, H Duty	2001-2009	Short Bed	42"	47082022
2500 NBS, H Duty, Ext. Cab	2001-2009	Short Bed	42"	47082022
2500 NBS, H Duty, Crew Cab	2001-2009	Short Bed	42"	47082022
3500 OBS	1988-2001	All	37"	47082020
3500 NBS	2001-2009	Long Bed	42"	47082021

### Dodge Mounting Kits

Truck Model	Year	Drive	Frame	Part Number
Ram	1994-2001	2wd & 4wd	38"	47082090
Ram	2002-2008	2wd & 4wd	38"	47082095
Ram 2500/3500	2009	2wd & 4wd	38"	47082095
Ram 1500	2009-present	2wd & 4wd	38"	47082400
Dakota	1997-2005	2wd & 4wd	38"	47082030

### Ford Mounting Kits

Truck Model	Year	Drive	Frame	Part Number
F-150	1978-1996	2wd & 4wd	38	47082040
F-150	1997-2003	2wd & 4wd	35 3/4	47082010
F-150	2004-2005	2wd & 4wd	35 3/4	47082015
F-150	2006-2008	2wd & 4wd		47082300
F-250 LD	1997-2002	2wd & 4wd	35 3/4	47082010
F-250 SD	1978-1998	2wd & 4wd	38	47082040
F-250 SD	1999-2010	2wd & 4wd	38	47082070
F-350 SD	1978-1998	2wd & 4wd	38	47082040
F-350 SD	1999-2010	2wd & 4wd	38	47082070

### Options

Truck Model	Year	Drive	Frame	Part Number
Cab & Chassis	1972-2009	4wd	34"	47027005

### Esthetic Option

Option	Model	Options	Frame	Part Number
Stainless Steel Face Plate	All	All	All	47082201

## Quic-Cush'n II

### Chevy-GMC Mounting Kits

Truck Model	Year	Bed	Drive	Frame	Part Number
All Old Body Style	1972-1987	All	4wd ONLY	34"	47027000
All Old Body Style	1988-2001	Long Bed	2wd & 4wd	37"	47073000
All Old Body Style	1988-2001	Short Bed	2wd & 4wd	37"	47073300
1500 New Body Style	1999-2009	All	2wd & 4wd	42"	47073050
2500 NBS LD	1999-2004	All	2wd & 4wd	42"	47073060
2500 NBS, Heavy Duty	2001-2009	Long Bed	2wd & 4wd	42"	47073080
2500 NBS, Heavy Duty	2001-2009	Short Bed	2wd & 4wd	42"	47073090
2500 NBS, HD, Ext. Cab	2001-2009	Short Bed	2wd & 4wd	42"	47073090
2500 NBS, HD, Crew Cab	2001-2009	Short Bed	2wd & 4wd	42"	47073090
3500 NBS	2001-2009	Long Bed	2wd & 4wd	42"	47073080

### Dodge Mounting Kits

Truck Model	Year	Bed	Drive	Frame	Part Number
Ram	1978-2001	Long	2wd & 4wd	38"	47026000
Ram	Pre-1993	Short	2wd & 4wd	38"	47026000
Ram	1994-1995	Short	2wd & 4wd	38"	47026500
Ram	1996-2001	Short	2wd & 4wd	38"	47026600
Ram 2500-3500	2002-2009	All	2wd & 4wd	38"	47073095
Ram 1500	2009	All	2wd & 4wd	38"	Unavailable

### Ford Mounting Kits

Truck Model	Year	Bed	Drive	Frame	Part Number
F-150	1978-1996	All	2wd & 4wd	38	47056100
F-150	1997-2003	All	2wd & 4wd	35 3/4	47056200
F-150 Super Crew Cab	All	All	2wd & 4wd	35 3/4	NONE
F-250 LD	1997-2002	All	2wd & 4wd	35 3/4	47056200
F-250 HD	1978-1998	All	2wd & 4wd	38	47056100
F-250 SD	1975-1997	Long	2wd & 4wd	34	47027000
F-250 SD	1999-2010	All	2wd & 4wd	38	47056400
F-350	1978-1998	All	2wd & 4wd	38	47056100
F-350 SD	1975-1997	Long	2wd & 4wd	34	47027000
F-350 SD	1999-2010	All	2wd & 4wd	38	47056400

### Options

Truck Model	Year	Bed	Drive	Frame	Part Number
Cab & Chassis	1972-2008	All	4wd	34"	47027000

### Conversion Kits

Option	Model	Options	Frame	Part Number
Cush'n Combo to Quic'n Easy	All	All	All	47070007C
Quic'n Easy to Cush'n Combo	All	All	All	47090001C



# UTP TOWING SOLUTIONS: THE EASIEST WAY TO TOW PRETTY MUCH ANYTHING!

## LET OUR HITCH PULL THE WEIGHT.



...You will wear out 3 trucks before you the UTP-DMI system wears out...

-Four Wheeler Magazine

- Basic Hitch**..... Mounts easily to your truck frame - designed for full size pickups
- Swing and Extension**..... Towbar extends 7" from frame and swings 12" fro quick one-person hookups - no need to accurately position your truck / pushing or pulling trailers
- Release Handles**..... Independent release for swings and extension. Handles are protected within hitch frame.
- Class 5 Standards**..... Up to 14,000 lbs. weight carrying and 1,400 lbs. tongue weight (without weight distribution system)
- Full-Range Spring Package**..... Full-cushion springs reduce transmission, differential, brak, suspension and frame stress, taking the "jerk" out of towing.
- Modular Steel Frame**..... 3"x3" angle frame adds strength to the towing system - reduces stress on truck frame.
- Chain Hooks**..... Manufactured as part of the hitch frame to provide additional strength.
- Warranty**..... Limited, two-year warranty

### SAFE AND SECURE

The full range spring package allows for cushioned towing that will not lock up with rust

### SMART INVESTMENT

The spring "Cush'n" reduces transmission, differential, suspension and frame stress on your truck

### LOAD-SPREAD

Distributes tow load over larger area for less stress on truck frame

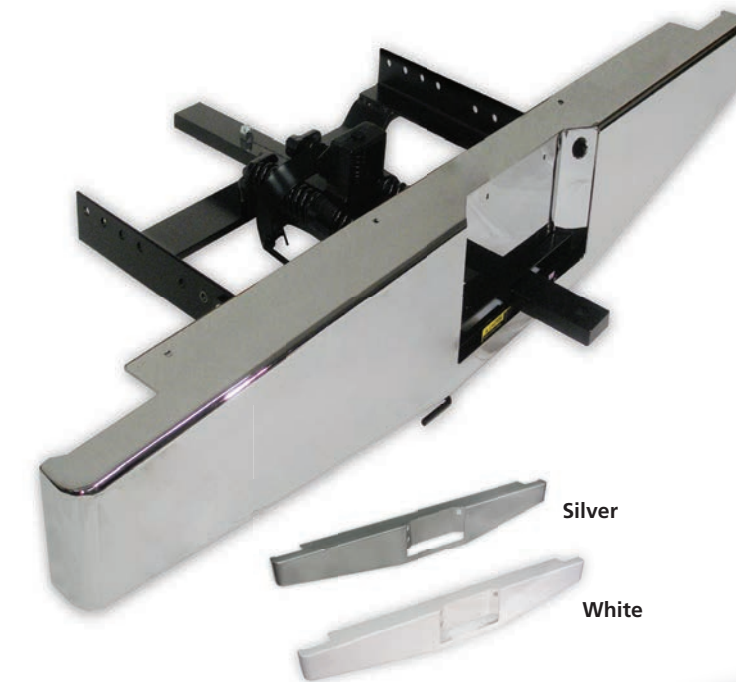
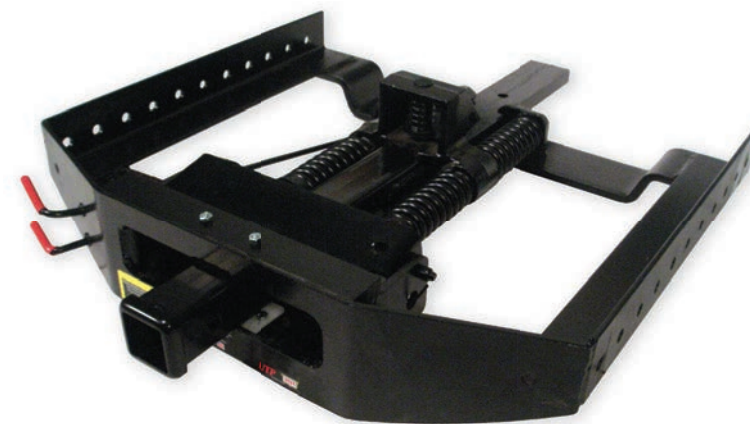
### PROXIMITY HOOKUP

The spring "Cush'n" allows the hitch to move freely when attaching, making hookup by a single person quick and easy

1. Unlock towbar, extend 7 inches and swing 12 inches.
  2. Back up, locking towbar front to back.
  3. Pull forward, locking side to side.
- IT'S THAT EASY!

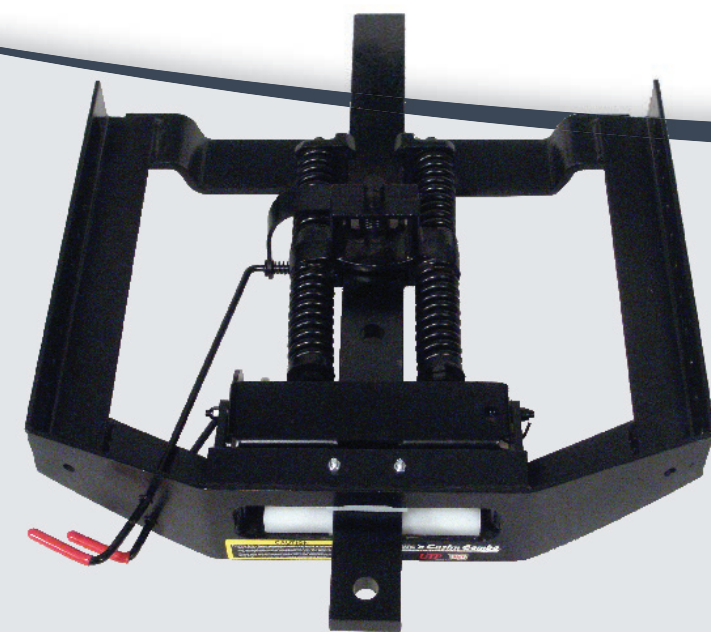
## Quic 'n Easy RECEIVER HITCH DMI

Quic 'n Easy fits under most OEM bumpers and mounts directly to the truck frame, making it secure and durable. Quic 'n Easy also comes equipped with a 2" x 2" Receiver and accepts a variety of adapters; drawbar, ball step-up or step-down, and pintle hook and weight distribution



## Quic-CUSH'N II DMI

Quic-Cush'n II offers a huge hookup window. The towbar extends 11 inches and swings 17 inches allowing for easy, one person hookup! Quic-Cush'n II also comes with a 1-year limited warranty on a painted or chrome face channel. Replacing your OEM bumper, the DMI Drop-Center bumper is tough, stylish, and integrates the strength and functionality of the DMI hitch directly into the design. The perfect complement for your hard-working truck.

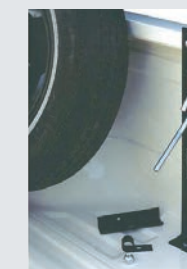


## CUSH'N COMBO DMI

The Cush'n Combo offers the best of both worlds, giving you the style of Quic 'n Easy and the strength of Quic-Cush'n II. Cush'n Combo fits under most OEM truck bumpers, mounting directly to the truck frame.

### Valley Industries In-Bed Spare Tire Carrier

- Can be used with 14in. to 16.5in. wheels with a 7in. max. rim width
- Universal design fits domestic and import pickups
- Includes installation hardware
- 5-year limited warranty
- Made in U.S.A.
- Rust resistant powder coat finish



### Available Hitches

Hitch	Part Number
Quic-Cush'n 2. Frame	47070001
Quic'n Easy Hitch	47070007
Cush'n Combo Hitch	47090001

### Drop Center Face Channels

Color	Year/Options	Part Number
White	All	47060140
Silver	All	47060150
Chrome	All	47060160

Additional parts and accessories information can be found on the back of this brochure.