



'63-'67 Corvette [Shaft Kit](#) Instructions
8052080 & 8052110

Full refund will NOT be granted to any kits that are damaged, scratched, or altered in any fashion.

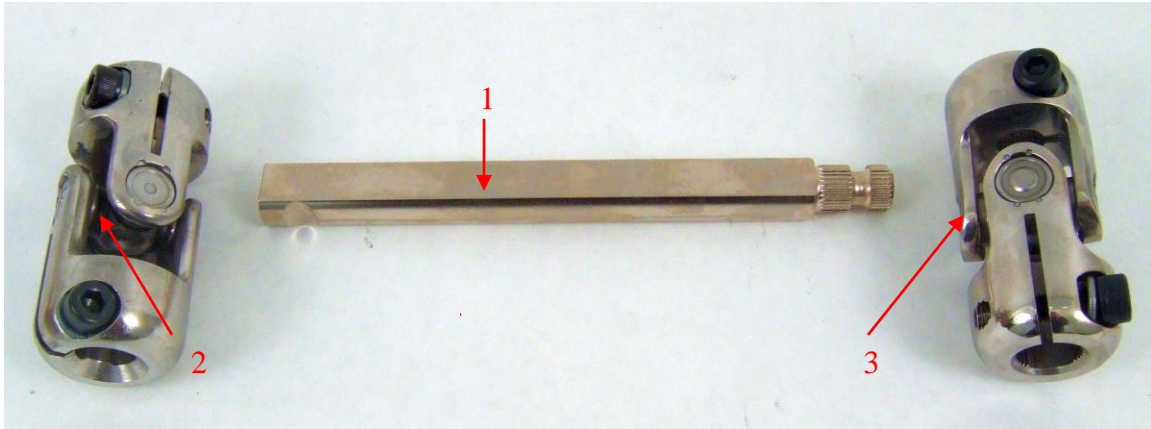


***ALTHOUGH THIS KIT IS FAIRLY SIMPLE TO INSTALL, SOME MODIFICATIONS MAYBE NECESSARY.**

***BEFORE STARTING INSTALLATION, PLEASE BE AWARE OF THE MODIFICATIONS THAT ARE NEEDED TO INSTALL.**

***ALSO BE AWARE THAT THERE ARE APPLICATION/PROVISIONS NEEDED IN ORDER TO INSTALL. PLEASE READ ALL INSTRUCTIONS FIRST.**

DUE TO VARIABLES OUTSIDE OUR CONTROL THESE KITS MAY NOT FIT ALL APPLICATIONS. ALSO, PLEASE VERIFY KIT WILL FIT YOUR APPLICATION BEFORE ALTERING VEHICLE.



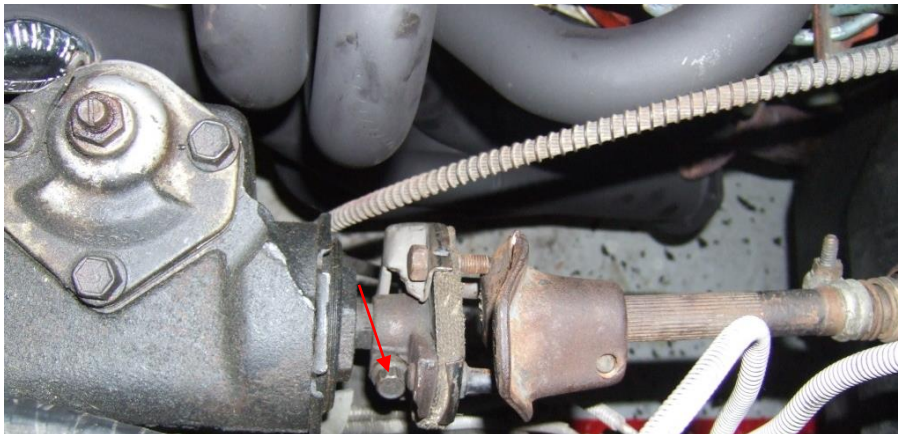
KIT CONTENTS:

#	Part Number	Description	Quantity
1a	543970	7 1/2" 9/16-30 X 3/4DD SHAFT	1
1b	544990	10.625" 9/16-30 X 3/4DD SHAFT	1
2a	8050640	17MM X 3/4DD U-JOINT	1
2b	8050230	9/16-26 X 3/4DD U-JOINT	1
3	8050500	3/4-36 X 9/16-30 U-JOINT	1

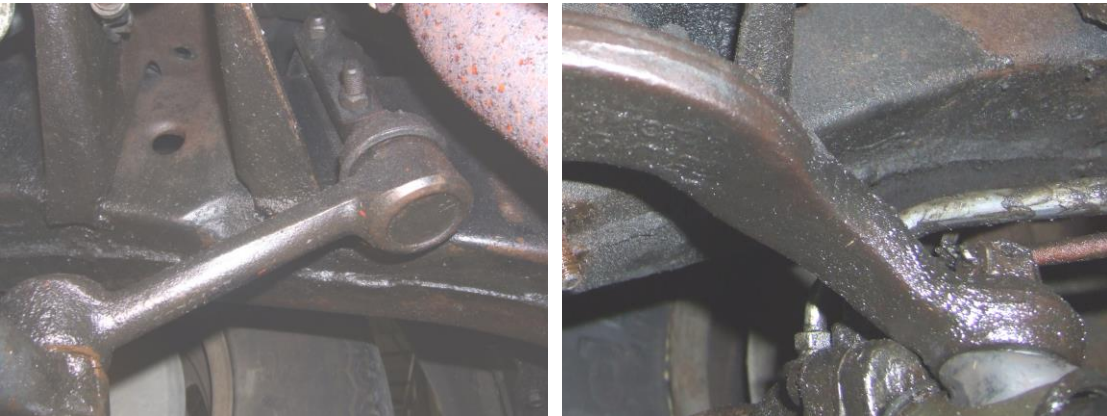
INSTALLATION

*Installation completed with Hooker Headers, #2456 Competition Headers.

1. Raise hood and remove pinch bolt at shaft and gearbox connection.



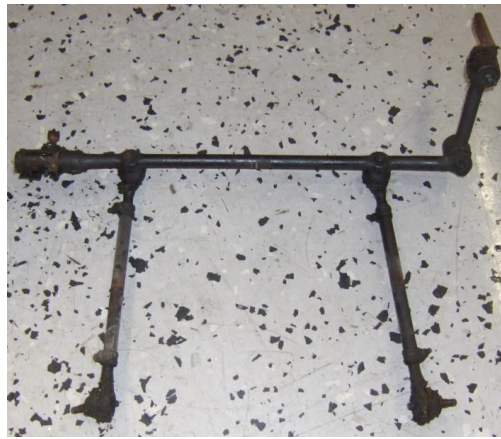
2. Lift vehicle and remove outer tie rod ends. Remove idler arm assembly from passenger side of vehicle. Remove drag link from pitman arm.



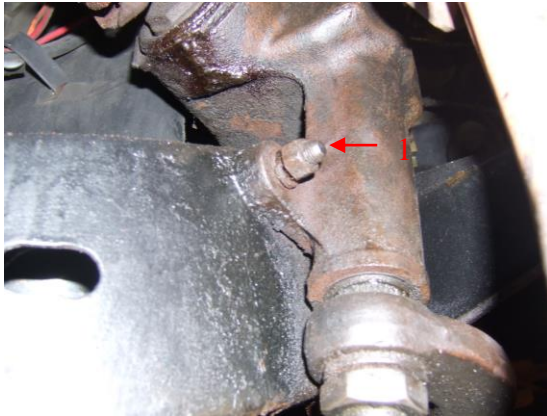
3. If your car was equipped with power steering you may have a bracket mounted on the bottom of the drivers side frame. This bracket held the power assist cylinder. You can now remove this bracket.



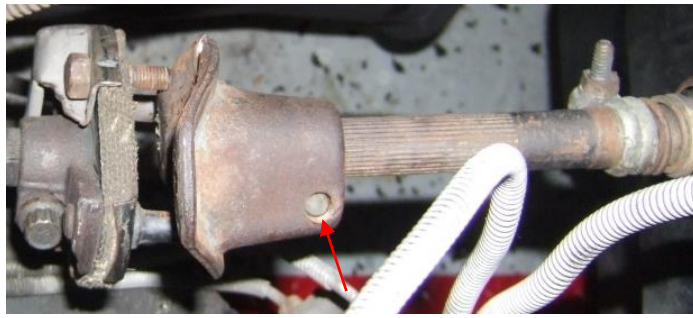
4. Remove stock steering linkage from vehicle.



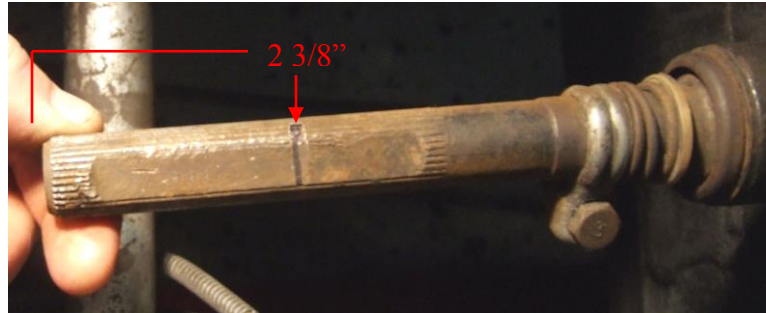
5. Remove the three bolts that hold the steering box in and take it off the car.



6. Remove pinch bolt on column shaft. Remove dampening joint assembly from column.



7. From above vehicle, measure 2 3/8" from the end of the steering column shaft and make a mark on shaft. Trim end of shaft off at 2 3/8" mark.



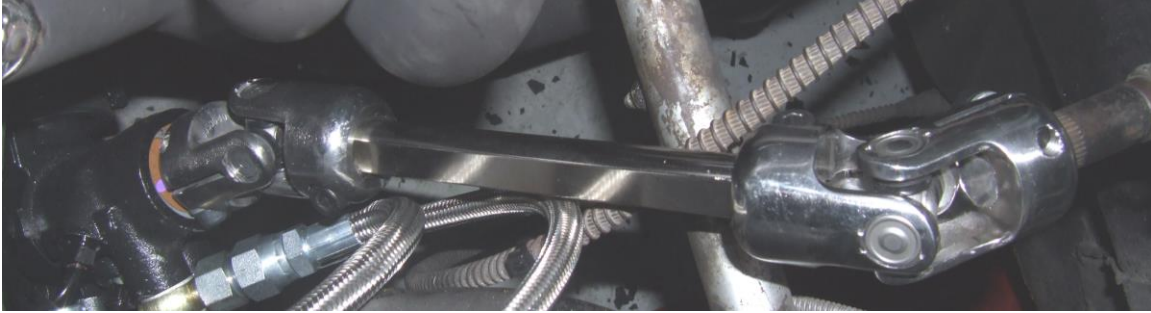
8. With rack centered in vehicle and steering wheel locked in the straight position, install intermediate shaft assembly. Note: Inside of top u-joint should be flush with end of column shaft.



9. With upper u-joint on column with pinch bolt running across the flat on the shaft. Raise rack and pinion assembly up in between the frame rails. Line lower u-joint up with the splines on the pinion. Slide u-joint onto pinion.



10. U-joint orientation is very important. When bolting intermediate shaft assembly into place. Install the joints 90 Degrees off of each other. This is important as it will reduce "BUMP", the hard points of rotation in the steering.



11. To finish your Corvette installation, please use the instructions that came with the Rack & Pinion. Do not tighten pinch bolts on u-joints at this time.

Note: This kit works best with our Rack & Pinion Kit 8011540.