



**'68-'82 Corvette [Shaft Kit](#) Instructions  
# 8052090**

**Full refund will NOT be granted to any kits that are damaged, scratched, or altered in any fashion.**

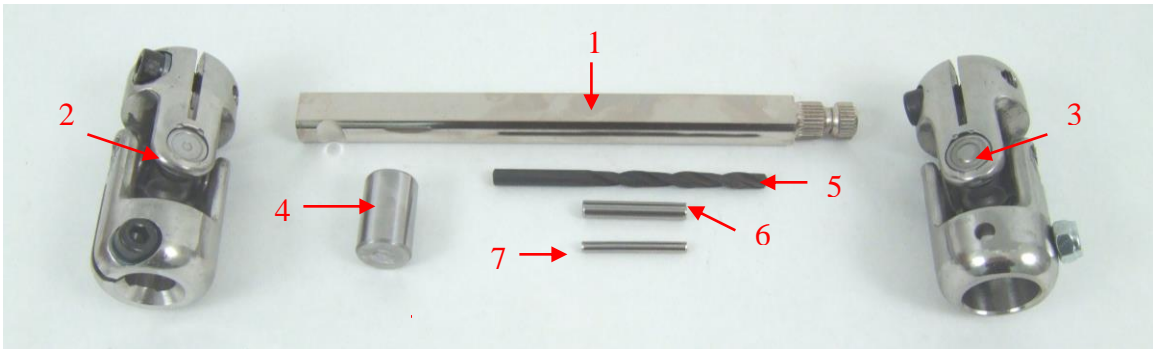


**\*ALTHOUGH THIS KIT IS FAIRLY SIMPLE TO INSTALL, SOME MODIFICATIONS MAYBE NECESSARY.**

**\*BEFORE STARTING INSTALLATION, PLEASE BE AWARE OF THE MODIFICATIONS THAT ARE NEEDED TO INSTALL.**

**\*ALSO BE AWARE THAT THERE ARE APPLICATION/PROVISIONS NEEDED IN ORDER TO INSTALL. PLEASE READ ALL INSTRUCTIONS FIRST.**

**\*DUE TO VARIABLES OUTSIDE OUR CONTROL THESE KITS MAY NOT FIT ALL APPLICATIONS. ALSO, PLEASE VERIFY KIT WILL FIT YOUR APPLICATION BEFORE ALTERING VEHICLE.**



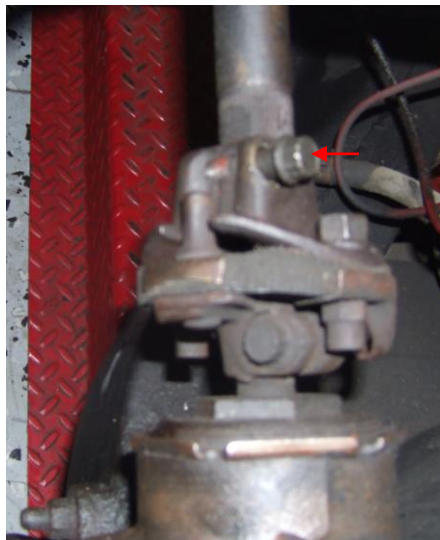
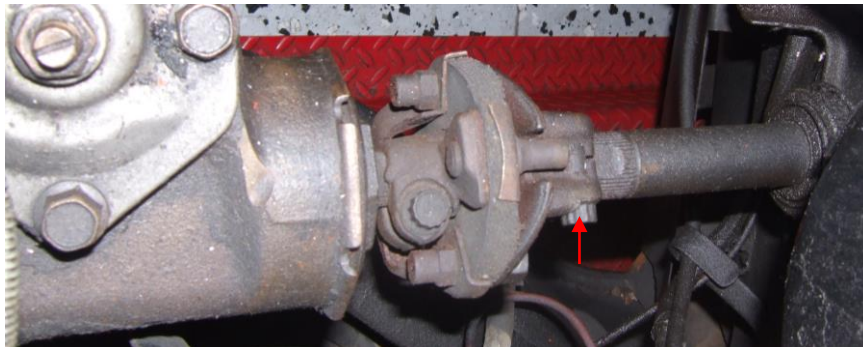
**KIT CONTENTS:**

#	Part Number	Description	Quantity
1	8052070	8 3/8" 9/16-30 X 3/4DD SHAFT	1
2	8050640	17MM X 3/4DD U-JOINT	1
3	8051410	9/16-30 X 3/4 ROUND U-JOINT	1
4	206840	COLUMN INSERT	1
5	230600	1/4" DRILL BIT	1
6	220060	1/4" X 1 1/2" ROLL PIN	1
7	220070	5/32" X 1 1/2" ROLL PIN	1

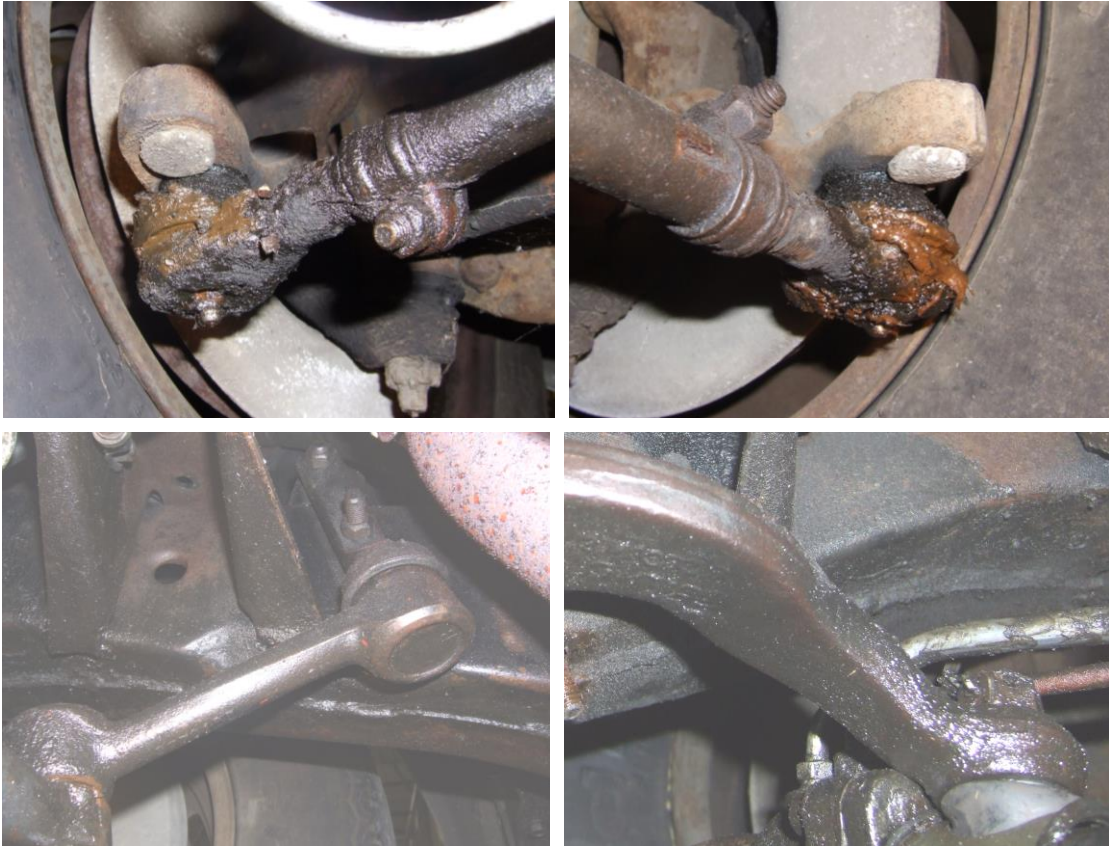
**INSTALLATION**

\*Installation completed with stock manifolds.

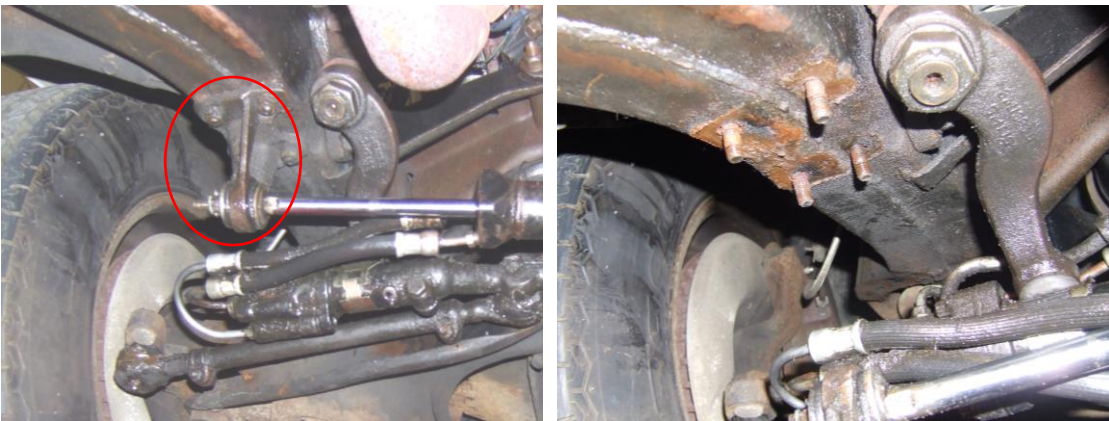
1. Raise hood and remove pinch bolt at shaft and dampening joint connection.



- Lift vehicle and remove outer tie rod ends. Remove idler arm assembly from passenger side of vehicle. Remove drag link from pitman arm.



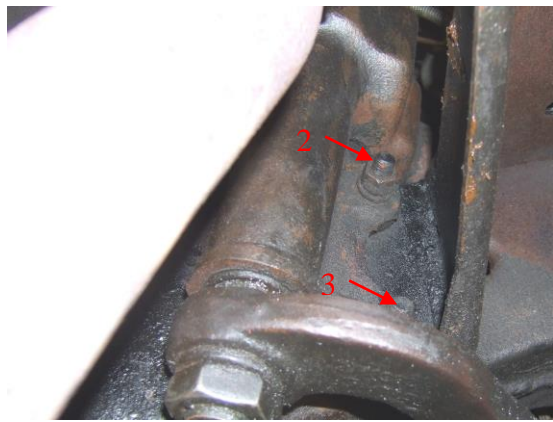
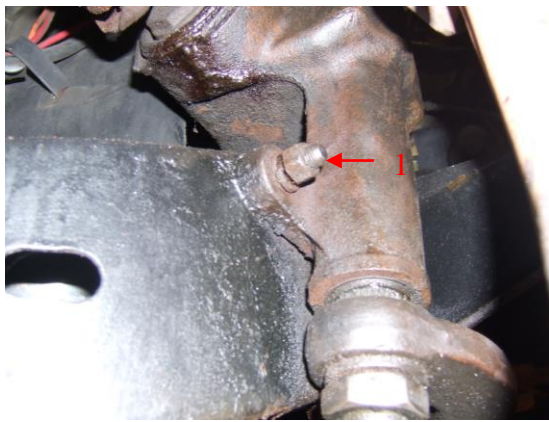
- If your car was equipped with power steering you will have a bracket mounted on the bottom of the drivers side frame. This bracket holds the power assist cylinder. You can now remove this bracket.



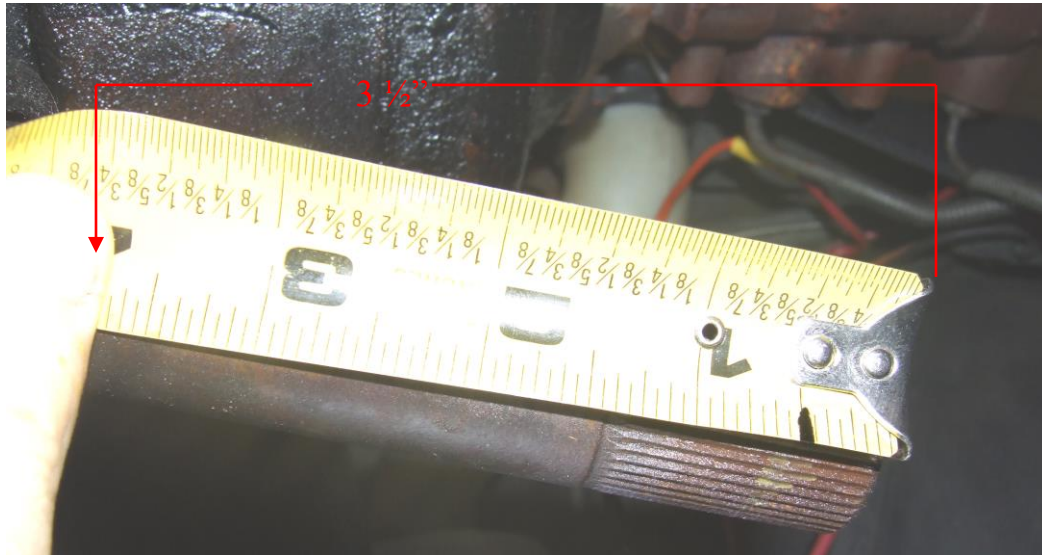
- Remove stock steering linkage from vehicle.



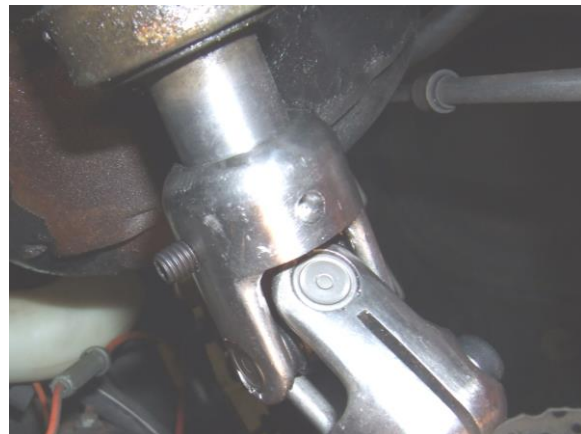
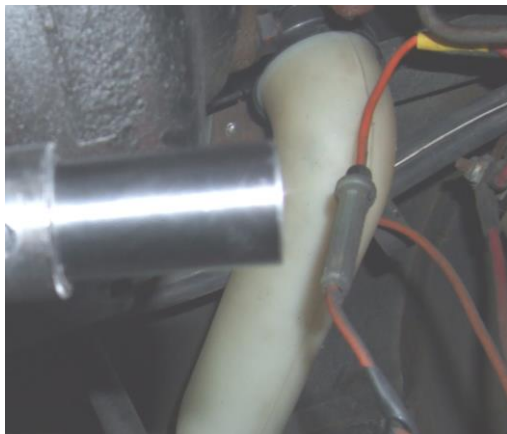
5. Remove the three bolts that hold the steering box in and take it off the car.



6. From above vehicle, measure 3 ½" from the end of the steering column shaft and make a mark on shaft. Trim end of shaft off at 3 ½" mark.



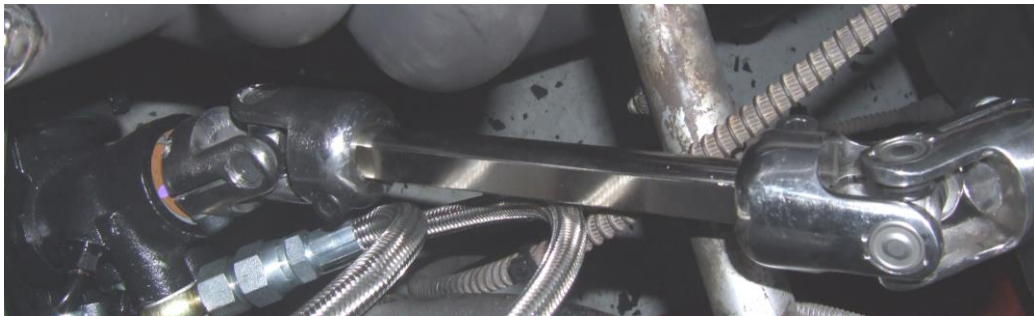
7. With rack centered in vehicle and steering wheel locked in the straight position, install intermediate shaft assembly. Tap column insert flush into column. Connect u-joint flush with the end of the column and use setscrew to hold u-joint in place. Do not drill column at this time.



8. With upper u-joint on column with setscrew tight on the shaft, raise rack and pinion assembly up in between the frame rails. Line lower u-joint up with the splines on the pinion. Slide u-joint onto pinion.



9. U-joint orientation is very important. When bolting intermediate shaft assembly into place. Install the joints 90 Degrees off of each other. This is important, as it will reduce “BUMP”, the hard points of rotation in the steering. With the shaft and u-joints connected tighten the setscrew on the top u-joint and drill through the shaft and column insert using the u-joint as a guide. Note: Make sure steering wheel is locked in the straight position and the rack is still centered.



10. Start to tap the large roll pin in and finish tapping the large and small roll pin in together until flush with the u-joint creating a positive lock.
11. To finish your Corvette installation, please use the instructions that came with the Rack & Pinion. Do not tighten pinch bolts on u-joints or drill u-joint at this time.

**Note:** This kit will work best with our Rack & Pinion Kit 8011540.