



## '58-'64 Impala Rack & Pinion Kit Instructions

8011040-01, 8011050-01, & 8011060-01

Unisteer offers a limited warranty against all manufacturer defects of their kits and supplied parts. Unisteer will not honor any warranty on any parts that have been modified or improperly installed. Full refund will NOT be granted to any kits that are damaged, scratched, or altered in any fashion. Unisteer will not reimburse any labor money to the customer to change out the part even under a warranty repair.



**\*USE ONLY POWER STEERING FLUID IN SYSTEM. DO NOT USE ATF.**

**\*ALTHOUGH THIS KIT IS FAIRLY SIMPLE TO INSTALL, SOME MODIFICATIONS MAYBE NECESSARY.**

**\*BEFORE STARTING INSTALLATION, PLEASE BE AWARE OF THE MODIFICATIONS THAT ARE NEEDED TO INSTALL.**

**\*ALSO BE AWARE THAT THERE ARE APPLICATION/PROVISIONS NEEDED IN ORDER TO INSTALL. PLEASE READ ALL INSTRUCTIONS FIRST.**

**\*DUE TO VARIABLES OUTSIDE OUR CONTROL THESE KITS MAY NOT FIT ALL APPLICATIONS. ALSO, PLEASE VERIFY KIT WILL FIT YOUR APPLICATION BEFORE ALTERING VEHICLE.**

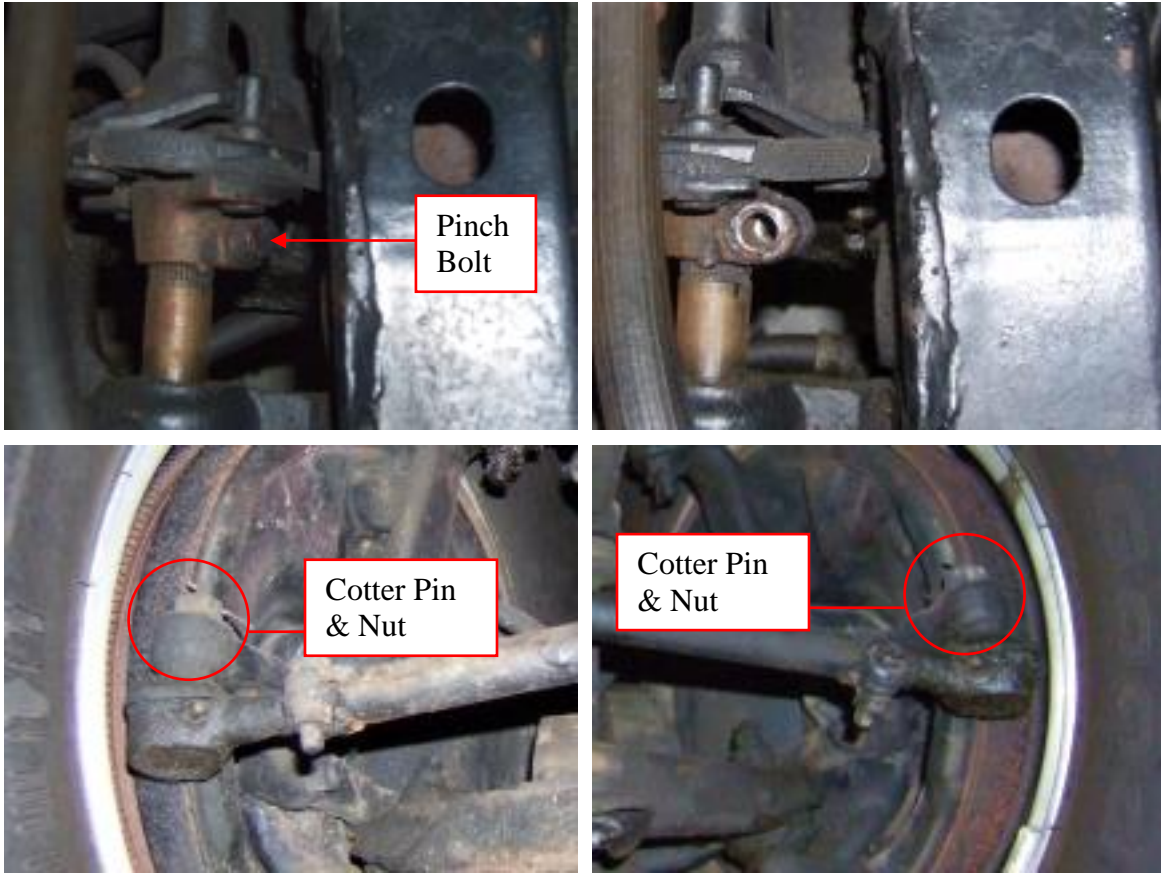


**Kit Contents:**

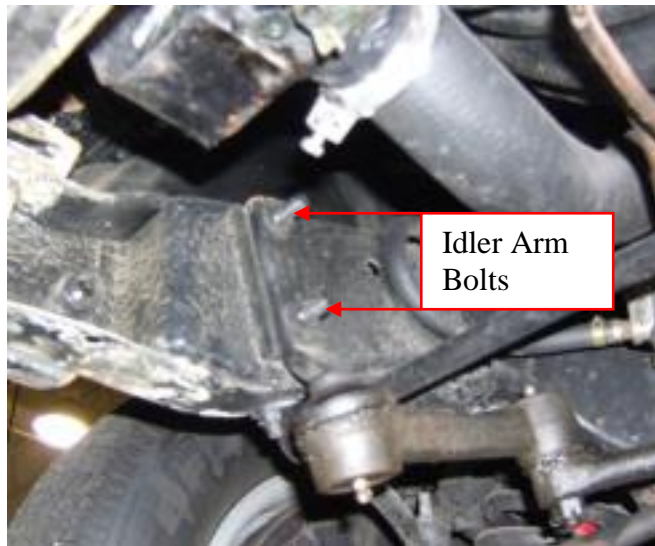
#	Part Number	Description	Included In Kit	Qty	Inspected By
1	<b>8011060</b>	<b>Rack &amp; Pinion</b>	All	1	
	--114580	- Inner Ends		2	
	--8020940	- Outer Ends		2	
	--621090	- Rack Install Kit		1	
	-----120490	--- 3/8"-16 lock Nut		4	
	-----200850	--- 5/16" Flat Washer		8	
	-----231210	--- 3/8"-16 x 4 1/2" Hex Bolt		2	
	-----231510	--- 3/8"-16 x 4" Hex Bolt		2	
	-----231930	--- 3/8"-16 x 3 3/4" Hex Bolt		2	
	-----621710	--- 16mm & 18mm Banjo Fittings		1ea	
	-----8023880	--- Sway Bar Bushing Kit		1	
2a	<b>8060730</b>	<b>SB Pump Kit</b>	8011040	1	
	--8060470	- C-5 Pump w/ Reservoir		1	
	--8020630	- V-Belt Pulley		1	
	--8022430	- Stabilizer Bracket		1	
	--8022450	- Mounting Bracket		1	
	--201000	- 1/4" Flat Washer		1	
	--205810	- Stand Off		2	
	--230460	- M8 x 1.25 x 25mm Bolt		2	
	--231490	- 3/8"-16 x 1 1/2" Hex Bolt		2	
	--231680	- 5/16"-18 x 3/4" Hex Bolt		1	
2b	<b>8060700</b>	<b>BB Pump Kit</b>	8011050	1	
	--8060500	- C-5 Pump for Remote Reservoir		1	
	--8020790	- Remote Reservoir		1	
	--8020630	- V-Belt Pulley		1	
	--8022360	- Stabilizer Bracket		1	
	--8022370	- Mounting Bracket		1	
	--620840	- Install Kit		1	
	-----200840	--- 3/8" Lock Washer		2	
	-----200850	--- 5/16" Flat Washer		2	
	-----206170	--- Stand Off		1	
	-----206180	--- 5/8" Stand Off		1	
	-----231210	--- 3/8"-16 x 4 1/2" Hex Bolt		2	
3a	<b>8024000</b>	<b>2 Line Kit</b>	8011040	1	
3b	<b>8021580</b>	<b>3 Line Kit</b>	8011050	1	
4	<b>8050880</b>	<b>U-Joint 3/4"-36 X 3/4"-DD (Pinion)</b>	8011040, 8011050	1	
5	<b>8051740</b>	<b>U-Joint .874" Smooth x 9/16"-30 (Column)</b>	8011040, 8011050	1	
6	<b>206080</b>	<b>GM Spacer Washer</b>	8011040, 8011050	2	
7	<b>220140</b>	<b>10mm x 40mm Roll Pin</b>	8011040, 8011050	1	
8	<b>220150</b>	<b>6mm x 40mm Roll Pin</b>	8011040, 8011050	1	
9	<b>545090</b>	<b>16.75" DD Shaft</b>	8011040, 8011050	1	

## Disassembly

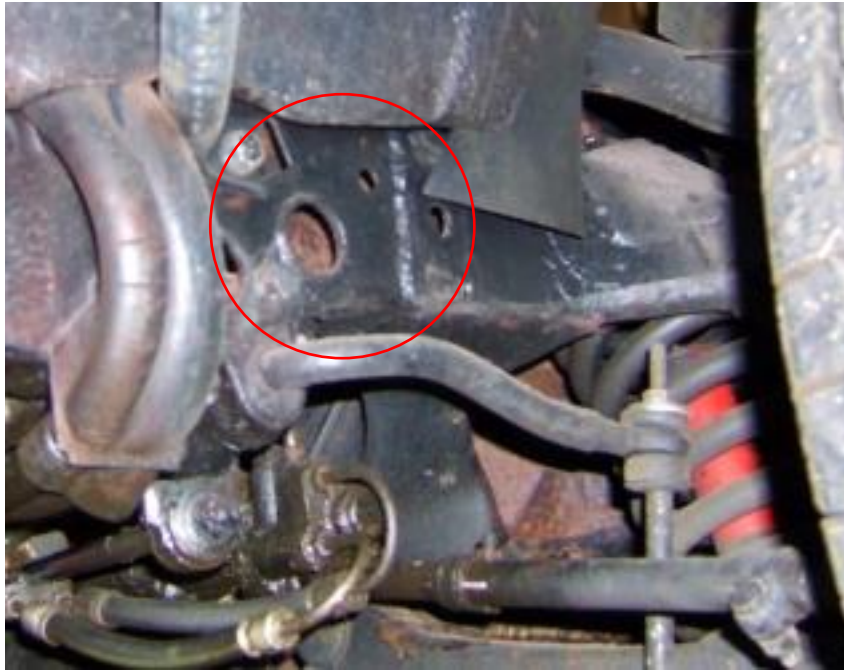
1. From under the hood remove the pinch bolt at the steering box and shaft. Remove the outer tie rod cotter pins and nuts. Remove the outer tie rods.



2. Remove the 2 bolts on the passenger side frame rail that retains the idler arm assembly.



3. Remove the 3 bolts on the driver side frame rail that retains the steering box to the frame. Remove the steering box and steering linkage assembly from the vehicle.

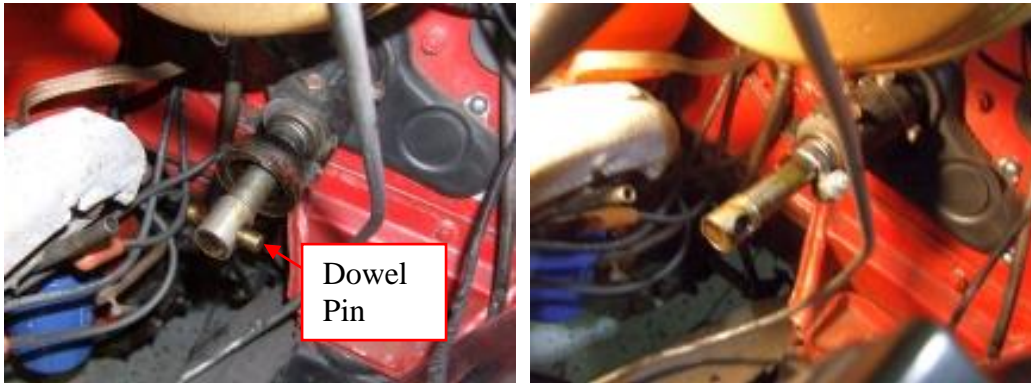
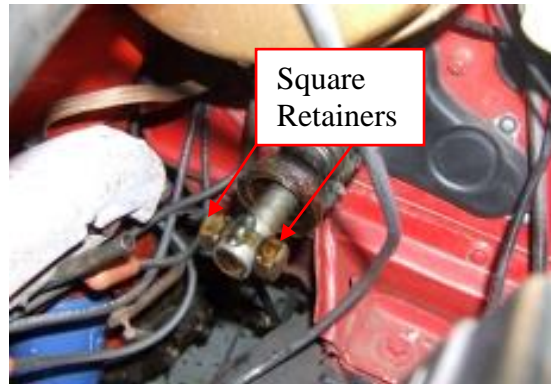


4. Once you have the stock linkage removed, it will be necessary to remove the stock coupler joint at the steering column. To remove it you must first remove the retainer ring from the coupler, next remove the cover by sliding it down out of the way.



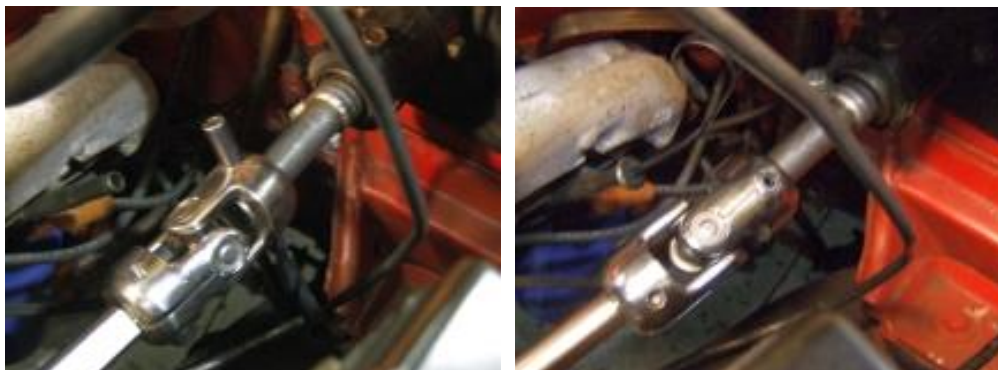
5. You will now remove the tab that retains the 2 square retainers on the shaft. Once these items are removed you should be looking at just the dowel pin in the shaft. Next, with a center punch and hammer you need to drive out the dowel pin.

**NOTE:** If pin is stubborn, removal of column may be necessary.



### Assembly

6. Once the dowel pin is removed you will need to install the new supplied u joint and align the holes and install the supplied roll pin. Once the new roll pin is installed you need to install the smaller pin inside of the larger one. This will ensure a positive lock.



7. Note: If your vehicle was equipped with power steering from the factory, it will be necessary to remove the stock stabilizer bar frame mounts and install the supplied energy system bushings and mounts.

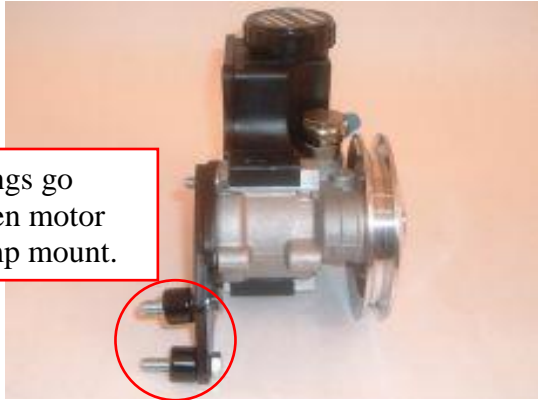


8. You are now ready to install the rack and pinion. Your rack has come assembled to the mounting bracket. Put the rack and bracket up in place and using the new supplied hardware, install the bolts on the driver side and passenger side where the steering box and the idler arm used to be and let the bracket hang. Install the washers and nuts and torque to 45 ft. lbs.



9. Next, if equipped from the factory remove the power steering pump and mounting brackets. Then, install the supplied mounting bracket and pump on the motor using the supplied bolts and bushings. Note: you will need to measure and install a new v belt. It may be necessary to change your pulley drive orientation such as moving your generator belt off of the crank and run it to the water pump pulley only. You have to determine your set up per application depending on your vehicles accessories.

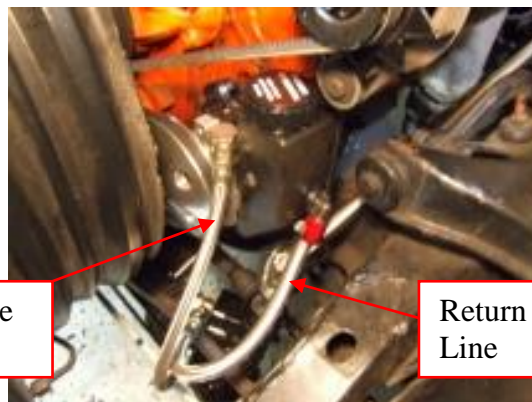
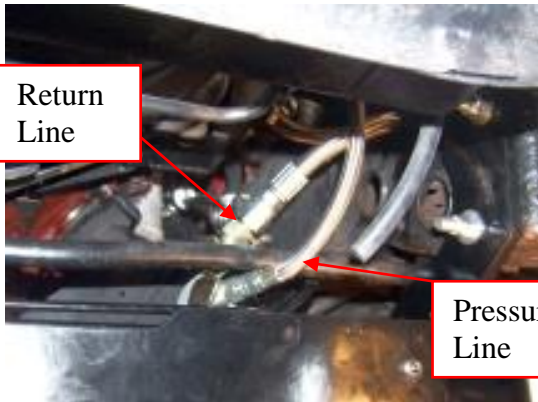




Bushings go between motor & pump mount.

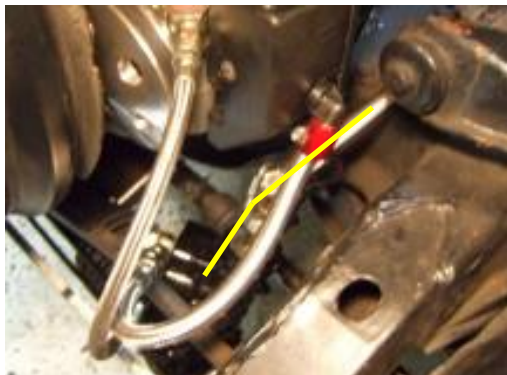


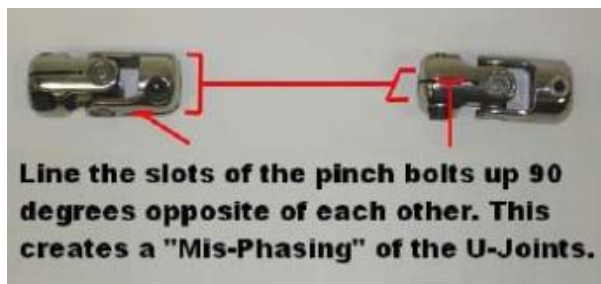
10. Once your pump is installed you are now ready to install the lines. The pressure line is installed from the lower port on the rack to the threaded banjo fitting on the pump. The return line goes from the top port of the rack to the plastic reservoir on the pump.



Return Line

11. You are now ready to install the shaft. From under the hood slide the supplied shaft into the steering column joint and then slide the shaft inside the pinion joint. Make sure your steering wheel is centered and locked. Your rack and pinion has been shipped centered, so make sure it still is. Note: your u joints must be phased 90 degrees apart from each other. Once you determine where they need to be, slide the pinion joint onto the rack and tighten both joints to 45 ft. lbs.





12. From under the vehicle install the outer tie rod ends into the steering arms. Install the supplied washers over the stud on top of the steering arms and install the supplied nuts. Torque to 45 ft. lbs. By eye align the front wheels somewhat so that you can drive the car to a shop to have a professional align the vehicle.



**Alignment Specs:**

Toe: 1/16" for radial tires & 1/8" for bias ply  
Camber: 0-1/4" positive (1/2" max)  
Caster: +2° on both sides

**UNISTEER®** *Performance Products*

No part of these materials can be reproduced or utilized in any form or by any means, electronic or mechanical, including photocopying, recording or by any information storage and retrieval system, with permission in writing from Maval Manufacturing Corporation.