



**'63-'82 Corvette Manual Rack & Pinion Kit Instructions  
# 8001520**

**Full refund will NOT be granted to any kits that are damaged, scratched, or altered in any fashion.**

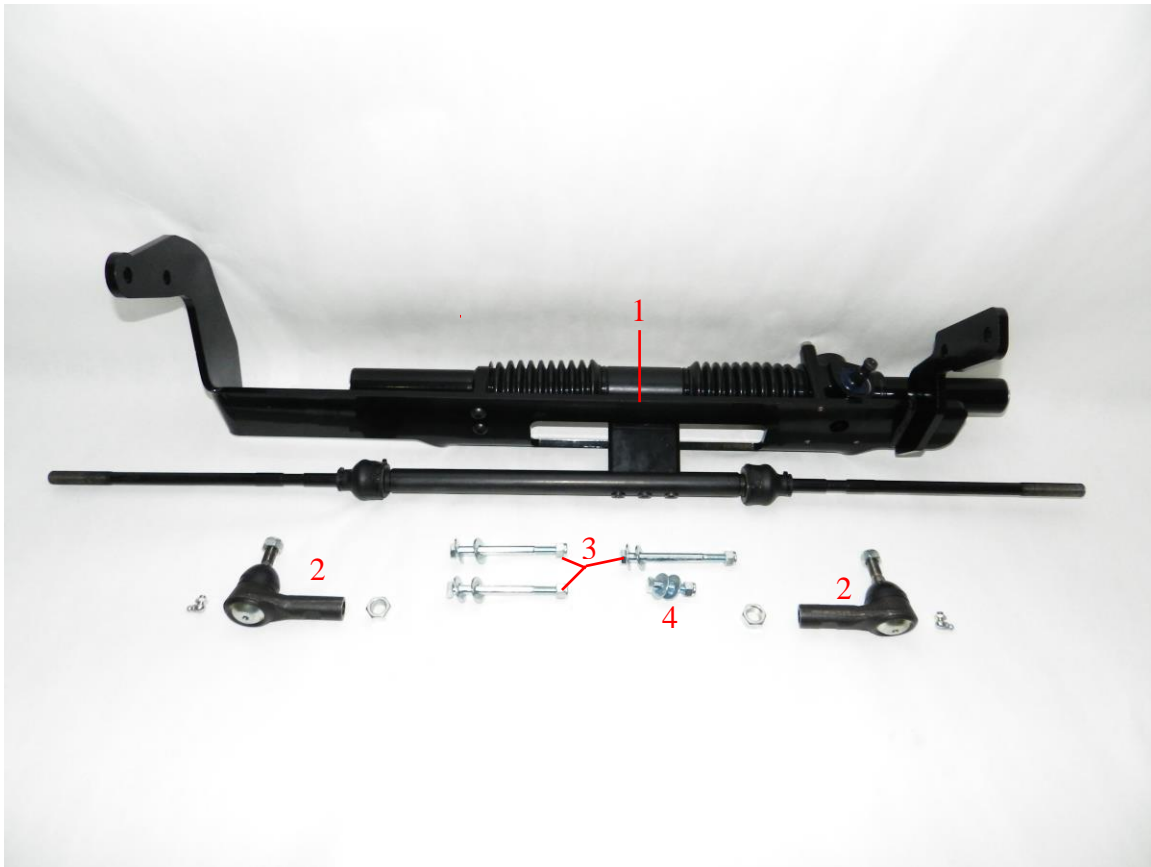


**\*ALTHOUGH THIS KIT IS FAIRLY SIMPLE TO INSTALL, SOME MODIFICATIONS MAYBE NECESSARY.**

**\*BEFORE STARTING INSTALLATION, PLEASE BE AWARE OF THE MODIFICATIONS THAT ARE NEEDED TO INSTALL.**

**\*ALSO BE AWARE THAT THERE ARE APPLICATION/PROVISIONS NEEDED IN ORDER TO INSTALL. PLEASE READ ALL INSTRUCTIONS FIRST.**

**\*DUE TO VARIABLES OUTSIDE OUR CONTROL THESE KITS MAY NOT FIT ALL APPLICATIONS. ALSO, PLEASE VERIFY KIT WILL FIT YOUR APPLICATION BEFORE ALTERING VEHICLE.**

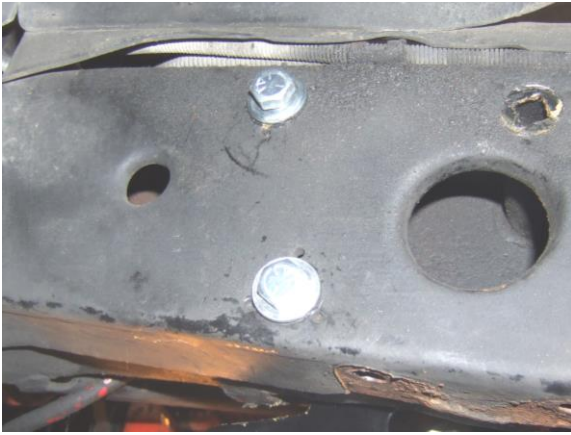


**KIT CONTENTS:**

#	Part Number	Description	Quantity
1	8001520	RACK & PINION UNIT W/BRACKET	1
2	8020940	M14 x 1.5 Outer Tie Rod End	2
2	120230	M14 x 1.5 Jam Nut	2
3	232600	3/8"-16 X 4 1/4" BOLT	3
4	231490	3/8"-16 X 1/2" BOLT	1
3,4	200990	3/8" FLAT WAHSER	8
3,4	120490	3/8"-16 LOCK NUT	4

## Installation

1. First install the steering shaft, and U-joints. For best results, we recommend using one of our shaft kits. 8052110 for 1963-67 models, or 8052710 for 1968-82 models.
2. From under the vehicle, install the new rack and pinion assembly between the frame rails. Fasten the rack bracket to the chassis using the supplied 3/8" bolts. Driver side uses 2 long bolts and passenger side uses 1 long and 1 short. Short bolt goes into the top hole in the bracket. Torque bolts to 45 ft lbs.  
Note: Make sure rack bracket is perpendicular to the ground.



3. Thread lock nuts and tie rod ends onto the inner tie rods.

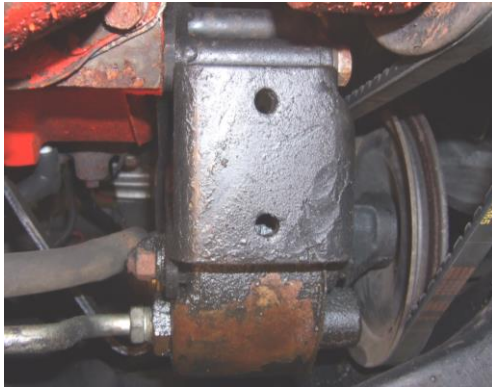


4. Fasten tie rod ends to spindles and tighten locking nuts to 50 ft lbs.
5. Tighten all pinch bolts on u-joints to 45 ft lbs.



### Steering Pump Disassembly

6. If your vehicle has power steering stock, you will need to remove your stock power steering pump and mounting brackets.



## Final Steps

7. Vehicle will need to be aligned properly after install. Align vehicle as close as you can and torque down tie rod jam nuts. Take vehicle to professional alignment shop.

**Note:** To adjust toe on vehicle loosen jam nut and turn inner end. The inner end will turn on the inside and thread in and out on the outside. Disassembly of the outer ends is not necessary.



**UNISTEER®** *Performance Products*

No part of these materials can be reproduced or utilized in any form or by any means, electronic or mechanical, including photocopying, recording or by any information storage and retrieval system, without permission in writing from Unisteer Performance Products.