



# RAPTOR WHITE



## TECHNICAL DATA SHEET & PROCESS GUIDE

### BED LINER AND PROTECTIVE COATING

U-POL RAPTOR Tough and Tintable Protective Coating is a 2K polyurethane coating that provides surfaces with a protective barrier that can withstand the toughest situations. RAPTOR Black and Tintable are also available.

### FEATURES

#### **CUSTOMIZABLE**

Tint RAPTOR to match ANY Color, even white!

#### **DURABLE**

Provides a tough scratch and stain resistant surface.

Protects against rust and corrosion.

#### **UV RESISTANT**

Delivers a high level of fade resistance.

#### **WATER RESISTANT**

Provides a water resistant finish, keeping moisture out and reducing rust.

#### **RESISTANT**

Resistant to a wide range of chemicals including fuels, hydraulic oils, animal urine, salt water and more.

#### **QUICK & EASY TO USE**

Easy as Fill-Shake-Shoot.

Provides excellent adhesion across many substrates.

Easy to clean - simply hose off.

Can be applied with U-POL Application Gun, HVLP gun, roller or brush.

### CERTIFICATES

- **FIRE RESISTANCE**

RAPTOR has passed flammability testing for motor vehicles according to the test methods FMVSS 302, ISO 3795 & BS AU 169A.

- **SLIP RESISTANCE**

When used with RAPTOR Traction Additive it produces a finish meeting ASTM E303-93.



# RAPTOR WHITE



## TECHNICAL DATA SHEET & PROCESS GUIDE

### BED LINER AND PROTECTIVE COATING

### SUBSTRATES AND PREPARATION

- |                   |                  |                     |              |             |
|-------------------|------------------|---------------------|--------------|-------------|
| <b>Substrates</b> | • Original Paint | • Galvanized*       | • Fiberglass | • E-coat*   |
|                   | • Aluminum*      | • Polyester Fillers | • GRP        | • Concrete* |
|                   | • Bare Metal*    | • Rigid Plastic*    | • SMC        | • Wood*     |

*Some substrates require additional surface preparation before applying RAPTOR. See Substrate Preparation section for details.*



#### Substrate Preparation

To achieve best results with RAPTOR, good preparation is essential.

1. Remove all loose material and any rust from the surface to be coated.
2. Clean and degrease the surface.
3. Abrade the surface with the required grit sand paper (see below).
4. Re-clean the surface.
5. For hard to reach areas, like internal corners, etc., coat first with a suitable adhesion promoter, like RAPTOR Adhesion Promoter Aerosol, for optimal adhesion.

- \* Aluminum, bare metal, and galvanized: Abrade with: Bare metal 80-180; Aluminum/Galvanized 120-180  
Localized rub-thrus: prime with an etch primer, such as two coats of RAPTOR Acid Etch Primer Aerosol.  
Large exposed areas of bare metal: Full 2K primer system required for optimum adhesion and corrosion resistance. RAPTOR Anti-Corrosive Epoxy Primer is recommended.
- \* Rigid Plastic (ABF, SMC) and fiberglass: Abrade with 120-180. Clean and degrease.
- \* Flexible Plastic (TPO, EDPM, & PP): Abrade with 180-320 grit. Clean and degrease. An adhesion promoter is required for proper adhesion. RAPTOR Adhesion Promoter Aerosol is recommended.

**\*\*\*Polyethylene, often found on ATVs, is a finicky material that has adhesion issues with most coatings. RAPTOR does not adhere to polyethylene, even with the use of adhesion promotor.\*\*\***

- \* OEM E-Coat: Scuff the surface with an coarse abrasive pad then clean and degrease.
- \* Wood: RAPTOR can be applied directly to stable wood.
- \* Concrete: For best results, clean the surface and remove dust. Sealing is not required. If you do seal with proprietary concrete sealer, the surface must be sanded again before applying RAPTOR.



# RAPTOR WHITE



## TECHNICAL DATA SHEET & PROCESS GUIDE

### BED LINER AND PROTECTIVE COATING

#### MIXING



#### Mixing Ratio

As simple as  
FILL - SHAKE - SHOOT



	U-POL Application Gun	HVLP Gravity Gun
<b>RAPTOR : Hardener</b>	3:1	3:1
<b>U-POL SYSTEM 20 Fast Urethane Reducers</b> <i>Use only Urethane Reducers</i>	Ready to use - no reducer needed	Reduce up to a maximum of 15% to reduce the texture and for about 25% more coverage*

*\*Addition of reducer will affect the product VOC.*

RAPTOR is easy to mix. Simply FILL the RAPTOR coating bottle to the first ridge line "A" (250ml/0.5 pints of hardener). Replace the cap and SHAKE contents vigorously for at least 2 minutes. SHOOT as follows.

#### Mixing by weight

Grams	Coating (A)	Hardener (B)
1000g	783g	217g
500g	392g	108g

Pot life of RAPTOR when activated is 60 minutes at 68°F (20°C).

Use of an accelerator, like SYSTEM 20 Paint Rocket UP0735, is optional.

Only mix one bottle of RAPTOR at a time. Clean gun between mixes.

Tighten cap carefully. Overtightening the cap may cause the cap to split.

#### 2K ISOCYANATE HARDENER

- Specially designed to provide optimum results independent of climatic conditions and size of repair.
- RAPTOR hardener must not be used on its own. It can only be used with RAPTOR coating.



Shelf Life

12 months in unopened containers. Lids must be replaced after every use.

Storage Temperature

41°F (5°C) - 77°F (25°C)



# RAPTOR WHITE



## TECHNICAL DATA SHEET & PROCESS GUIDE

### BED LINER AND PROTECTIVE COATING

#### APPLICATION

##### U-POL Application Gun (UP0726 or UP4880) Application

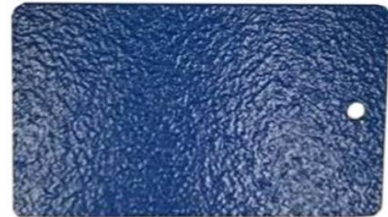
1. Remove cap from RAPTOR bottle with the mixed RAPTOR.
2. Attach the RAPTOR bottle to the RAPTOR Application Gun (UP0726) or the RAPTOR Professional Vari-Nozzle Application Gun (UP4880).
3. Adjust the air pressure to 40-60 PSI.
4. Apply to the prepared surface with an even sweeping motion to obtain the desired texture.
5. If applying additional coats allow to flash off for 60 minutes between coats.

U-POL recommends that you spray a test panel with RAPTOR first to ensure the desired texture is achieved.

##### How to create common textures with a RAPTOR Application Gun (UP0726):

###### 1. Standard texture through RAPTOR Application Gun:

- Ø 60 PSI
- Ø Distance from object: 1.5 foot
- Ø 2 coats with an even sweeping motion



###### 2. Coarse texture with RAPTOR Application Gun:

- Ø Mix RAPTOR and allow to stand for 10-minutes
- Ø 45 PSI
- Ø Distance from object: 1.5 foot
- Ø 2 coats: 1st with an even sweeping motion  
2nd dropping the coat over the first

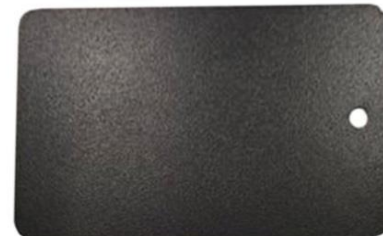


##### How to create common textures with a HVLP gun:

###### 3. Fine texture with HVLP gravity fed gun, 1.6-2.0mm

- Ø Add 15% urethane reducer
- Ø 29 PSI
- Ø Distance from object: > 0.5 foot
- Ø 2 coats: 1st coat: even wet coat

2nd coat: reduce pressure and material flow to achieve a fine mist





# RAPTOR WHITE



## TECHNICAL DATA SHEET & PROCESS GUIDE

### BED LINER AND PROTECTIVE COATING

#### 4. Standard texture with HVLP gravity fed gun, 1.6-2.0mm

- Ø Add 15% urethane reducer
- Ø 29 PSI
- Ø Distance from object: > 0.5 foot
- Ø 1st and 2nd coats applied as even wet coats



The above specifications are based on our experience with RAPTOR and represent only a few examples of the types of textures that can be achieved. It is recommended that a trial application is made to fine tune the finish before applying onto the finished object.

#### Rolling RAPTOR

1. Pour mixed RAPTOR into a suitable paint tray.
  2. Cut in all corners and hard to reach areas with a brush.
  3. Apply using an open textured roller.
  4. Load roller with the product and apply slowly using medium pressure.
- \* Rolling RAPTOR creates a lower build than spraying RAPTOR. Additional coats will be necessary. RAPTOR requires a 60 minute flash off period between coats.

Do not use RAPTOR in extreme cold or hot temperatures.  
Ideal application temperature is 68°F (20°C) with humidity of less than 60%.



#### Coats

Build / microns  
As applied using U-POL  
Application Gun (UP0726)

Applying 2 medium coats of RAPTOR is recommended.  
1 Coat: 230µ (9.0 MILs)      2 Coats: 475µ (18.7 MILs)  
All measurements are approximate and are dependent on the application method.



#### Flash-off / min @ 68°F (20°C)

Between coats

Wait 60 minutes between coats.

**IMPORTANT! Do not place heavy loads on the surface until RAPTOR is fully cured. See dry times below.**



#### Drying Times

Touch Dry @ 68°F (20°C)      Less than 1 hour  
Through Dry @ 68°F (20°C)      5-7 days

- \* Reducing flash off time, excessive film build, and/or reduced temperatures will alter drying time. Do not allow RAPTOR to come in contact with water for at least 72 hours.
- \* Higher temperatures will result in shorter flash time, and colder temperatures will require a longer flash time. Higher film builds will extend the final cure time.



# RAPTOR WHITE



## TECHNICAL DATA SHEET & PROCESS GUIDE

### BED LINER AND PROTECTIVE COATING

**Baking** RAPTOR can be baked for 30 minutes @ 140°F (60°C). Baking will speed up the initial cure, but it is still recommended waiting 7 days for regular use.

**I.R. Cure** I.R. curing is not recommended.



**Over Painting** RAPTOR can be overpainted with most modern paint systems. When overpainting, prep the surface as follows:

1. Let sprayed RAPTOR dry for 24 hours.
2. Abrade with a fine abrasive pad.
3. Clean and degrease.

**Adding RAPTOR Traction Anti-Slip Granules** See RAPTOR Traction SOP.

### PROPERTIES



**Data**

Flash point -0.4°F (-18°C)

Solid content Approx. 57 %

Specific gravity Approx. 9.85lb/gal (1180g/l)

**Chemical Resistance**

- Diesel: No effect
- Petrol: Resistant to splashes
- Xylene: Resistant to splashes
- Hydraulic Oil: No effect
- NaOH: No effect
- Bleach: No effect
- Alcohol: No effect
- Urine: No effect

For further information see document entitled "ASTM D1308".

**Dielectric breakdown** 4.8 kV/mm (122 V/Mil) ASTM D 149

**Temperature Resistance** -0.4°F to 212°F (-18°C to 100°C)

### STORAGE & VOC INFORMATION



**Shelf Life** 2 years from date of manufacture in sealed original containers.

**Storage** RAPTOR should be stored in cool, dry conditions in the original containers.

**Equipment Cleaning** Clean spray gun between mixes. All equipment should be thoroughly washed with acetone immediately after use.



# RAPTOR WHITE



## TECHNICAL DATA SHEET & PROCESS GUIDE

### BED LINER AND PROTECTIVE COATING



#### VOC Information

	<b>National Rule RAPTOR White</b>	
As Received	Regulatory:	297 g/l (2.5 lb/gal)
	Actual:	221 g/l (1.8 lb/gal)
As Applied	Regulatory:	392 g/l (3.3 lb/gal)
	Actual:	316 g/l (2.6 lb/gal)

	<b>2.6 VOC RAPTOR White</b>	
As Received	Regulatory:	297 g/l (2.5 lb/gal)
	Actual:	221 g/l (1.8 lb/gal)
As Applied	Regulatory:	288 g/l (2.4 lb/gal)
	Actual:	195 g/l (1.6 lb/gal)

### PRODUCT CODES

Product Code	UP Number	Description	Case Qty
RLW/S4	UP4807	RAPTOR White National Rule 1 US GAL Kit	1
RLW/SV4	UP4808	RAPTOR White 2.6 VOC 1 US GAL Kit	1
RLW/200	UP4872	RAPTOR White 200L Drum	1
RLHV/5	UP4824	RAPTOR Hardener 5L Tin 2.6 VOC	2
UP4830	UP4830	RAPTOR Anti-Corrosive Epoxy Primer 5L Kit	1
UP4831	UP4831	RAPTOR Anti-Corrosive Epoxy Primer 1L Kit	8
RLTR/SM	UP4800	RAPTOR Traction 200g Packet	20
UP5024	UP5024	RAPTOR Adhesion Promoter 450ml Aerosol	6
UP5023	UP5023	RAPTOR Acid Etch Primer 450ml Aerosol	6
UP5028	UP5028	RAPTOR Roller and Tray Kit	6
GUN/1	UP0726	RAPTOR Application Gun	5
UP4880	UP4880	RAPTOR Professional Vari-Nozzle Application Gun	6
GUNGHV/17	UP0326	MAXIMUM HVLP Gravity Gun 1.7mm Tip	1
ACID/1	UP0776	ACID#8 Etch Primer 1L	6
ROC/S	UP0735	SYSTEM 20 Rocket Paint Accelerator 250ml	10