



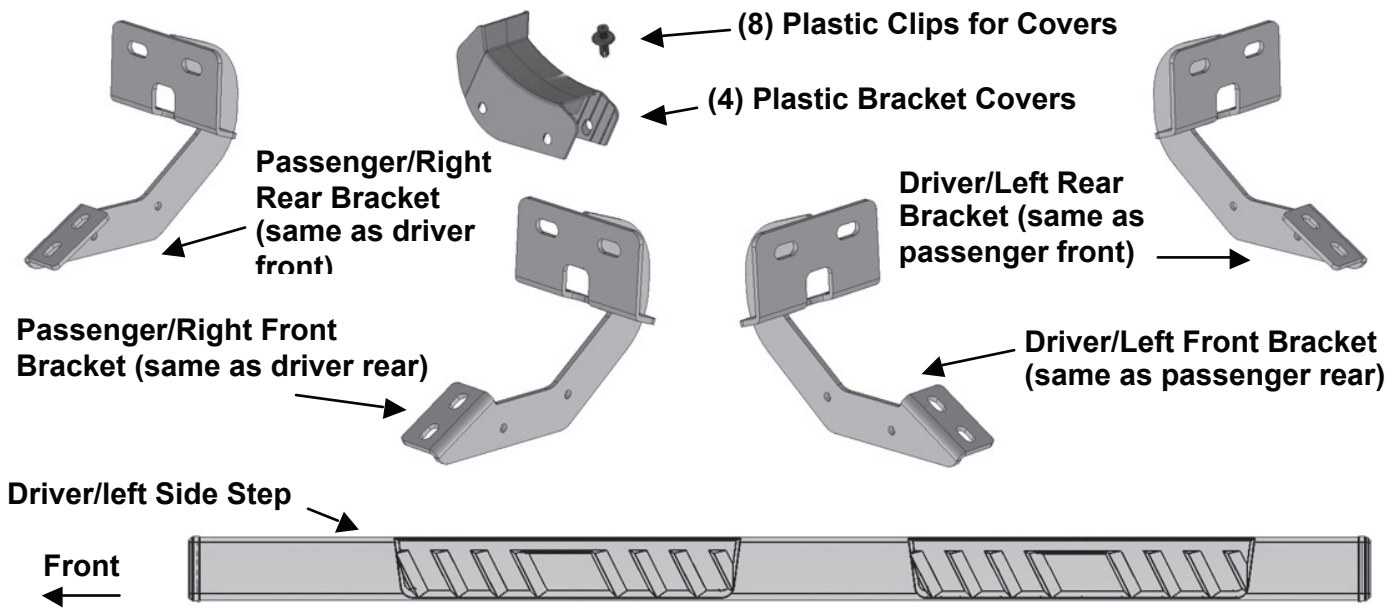
TYGER[®]

TYGER RISER[™]

Part#: TG-RS2F40088
FOR 2009-2014 FORD F-150 SUPERCAB

Parts List

- x1** Driver/Left Side Bar
- x1** Passenger/Right Side Bar
- x2** Driver/Left Front-Passenger/Right Rear Brackets
- x2** Passenger/Right Front-Driver/Left Rear Brackets
- x4** Plastic Cover for Brackets
- x8** Plastic Clips for Covers
- x8** 8mm Deep Clip Nuts
- x8** 8-1.25mm x 30mm Hex Bolts
- x8** 8-1.25mm x 25mm Hex Bolts
- x8** 8mm x 28mm OD x 3mm Large Flat Washers
- x16** 8mm x 24mm OD x 2mm STD Flat Washers
- x16** 8mm Lock Washers
- x8** 8mm Hex Nuts
- x8** 8mm Combo Bolts





TYGER[®]

Before Installation

REMOVE CONTENTS FROM BOX. VERIFY ALL PARTS ARE PRESENT. READ INSTRUCTIONS CAREFULLY BEFORE STARTING INSTALLATION.

STEP 1

Starting on the driver side of the vehicle, locate the (2) holes in the bottom of the body panel, (pinch weld), toward the front tire, (Figure 1). Next locate the rectangular opening and (2) small holes in the inner body panel directly above the holes in the pinch weld, (Figures 1 & 2). NOTE: The holes in the inner panel may be covered with sealing tape or insulation.

STEP 2

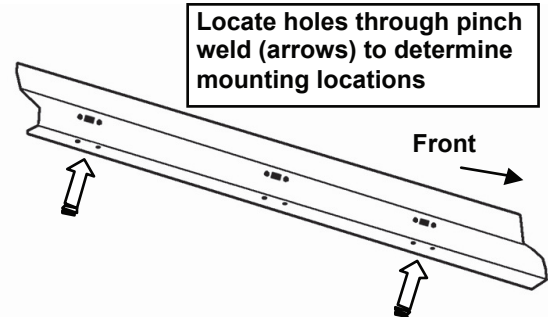
Slide (1) 8mm Clip Nut into the rectangular opening with the nut towards the inside. Line up the threaded nut on the clip with the round hole, (Figure 2). Repeat to install the 2nd 8mm Clip Nut in remaining hole location

STEP 3

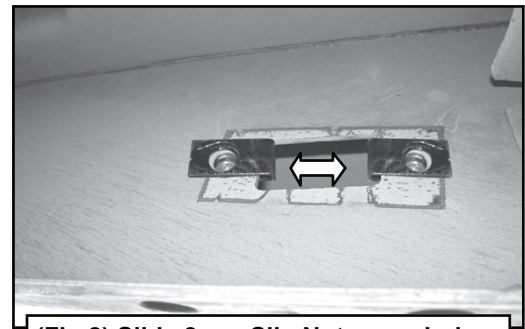
Select the driver side front Bracket, (Figure 3). Attach the Bracket to the (2) Clip Nuts with the included (2) 8mm x 30mm Hex Bolts, (2) 8mm Lock Washers and (2) 8mm x 28mm Large Flat Washers, (Figures 3 & 4). Depending on model and year, the brake cable may be run on the inside or outside of the Bracket. Do not tighten hardware at this time. NOTE: The cradle on the front Bracket should face to the rear of the vehicle.

STEP 4

Align the bottom holes in the front Bracket with the (2) holes in the pinch weld. Bolt the Bracket to the pinch weld using the included (2) 8mm x 25mm Hex Bolts, (4) 8mm STD Flat Washers, (2) 8mm Lock Washers and (2) 8mm Hex Nuts, (Figures 3 & 4). NOTE: Insert the bolts up from the bottom of the pinch weld and through the Bracket.

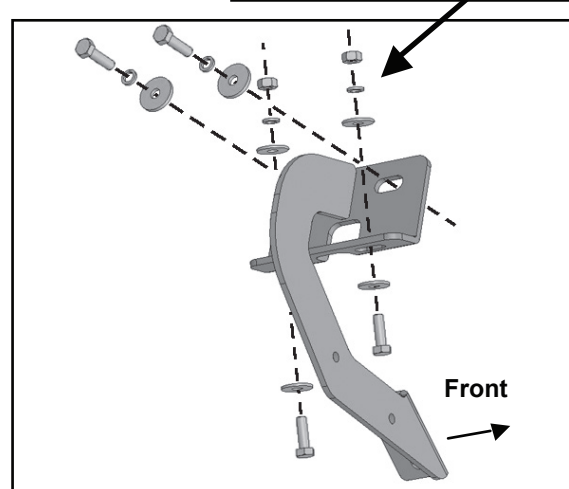


(Fig 1) Driver/left inner body panel illustrated



(Fig 2) Slide 8mm Clip Nuts over holes

- (2) 8mm x 25mm Hex Bolts
- (4) 8mm STD Flat Washers
- (2) 8mm Lock Washers
- (2) 8mm Hex Nuts



(Fig 3) Driver/left front mounting Bracket



STEP 5

Select (1) Plastic Cover and (2) Cover Clips. Slide the Cover over the top of the Bracket and line up the (2) holes in the cover with the holes in the Bracket, (Figure 5). Insert the Cover Clips into the holes. Push in the center pin on each clip until it is flush against the outer ring to expand the clip in the hole.

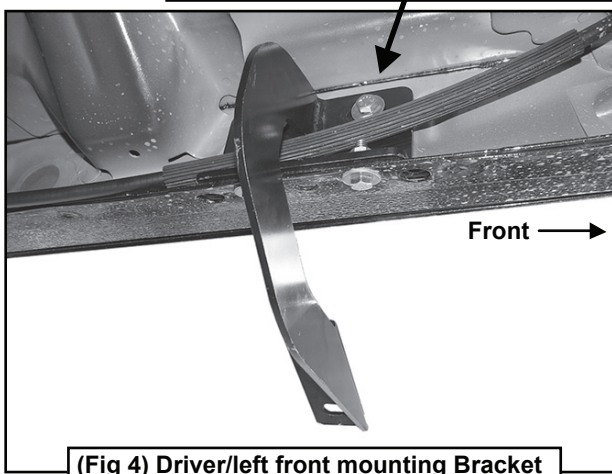
STEP 6

Continue along the cab to the rear mounting location. Locate the last (2) mounting holes in the pinch weld towards the back of the cab, (Figures 1 & 8). Repeat Steps 1-5 for rear mounting Bracket and Cover installation, (Figures 6-8). NOTE: The cradle on the rear Bracket should face the front of the vehicle.

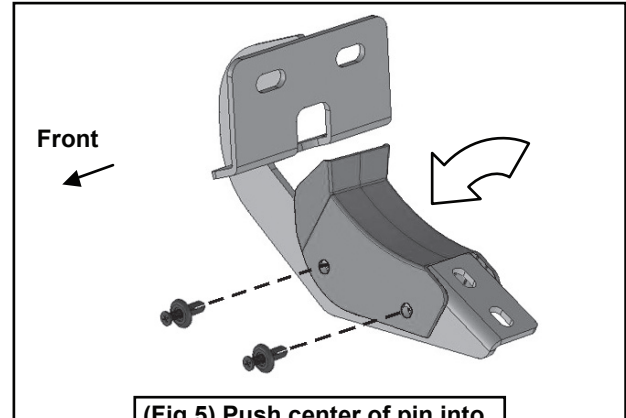
STEP 7

Select the driver/left Side Step. Carefully position the Driver Side Step onto the Mounting Brackets. IMPORTANT: Do not slide the Side Step on the Brackets or damage to the finish may result. Attach the Side Step to the Mounting Brackets with (4) 8mm x 25mm Combination Hex Bolts, (Figure 8). Do not tighten hardware.

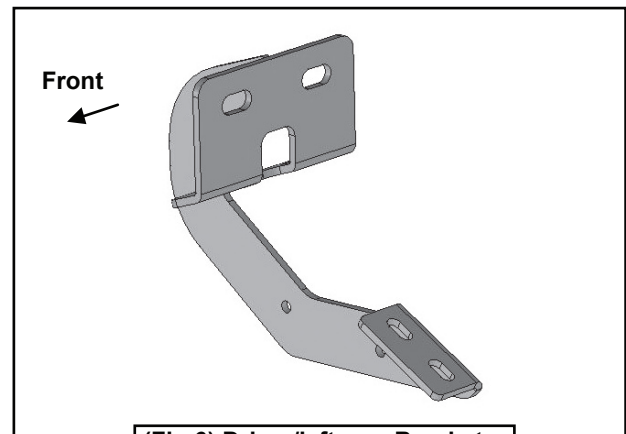
- (2) 8mm x 30mm Hex Bolts
- (2) 8mm Lock Washers
- (2) 8mm x 28mm Large Flat Washers



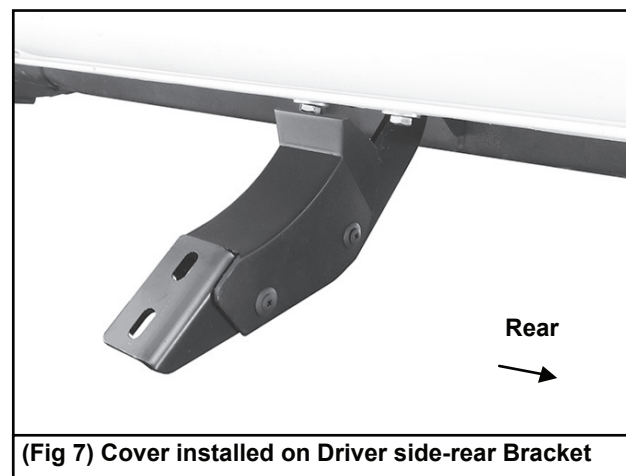
(Fig 4) Driver/left front mounting Bracket



(Fig 5) Push center of pin into Clip to expand in Bracket



(Fig 6) Driver/left rear Bracket



(Fig 7) Cover installed on Driver side-rear Bracket



TYGER[®]

STEP 8

Level and adjust the Side Step and fully tighten all hardware.

STEP 9

Repeat Steps 1-8 for passenger Side Step installation.

STEP 10

Do periodic inspections to the installation to make sure that all hardware is secure and tight.

NOTE:

• TO PROTECT YOUR INVESTMENT:

Wax this product after installing. Regular waxing is recommended to add a protective layer over the finish. Do not use any type of polish or wax that may contain abrasives that could damage the finish.

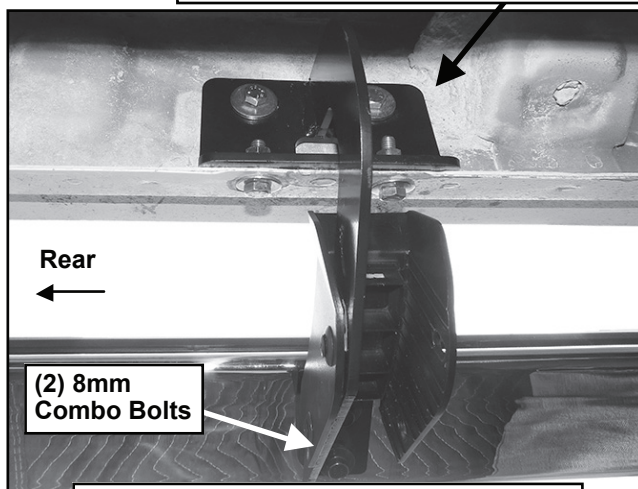
• FOR STAINLESS STEEL:

Aluminum polish may be used to polish small scratches and scuffs on the finish. Mild soap may be used also to clean the Side Step.

• FOR GLOSS BLACK FINISHES:

Mild soap may be used to clean the Side Step.

(2) 8mm x 30mm Hex Bolts
(2) 8mm Lock Washers
(2) 8mm x 28mm Large Flat Washers



(Fig 8) Driver/left rear Bracket installed



Complete Installation