

WHY TYGER?

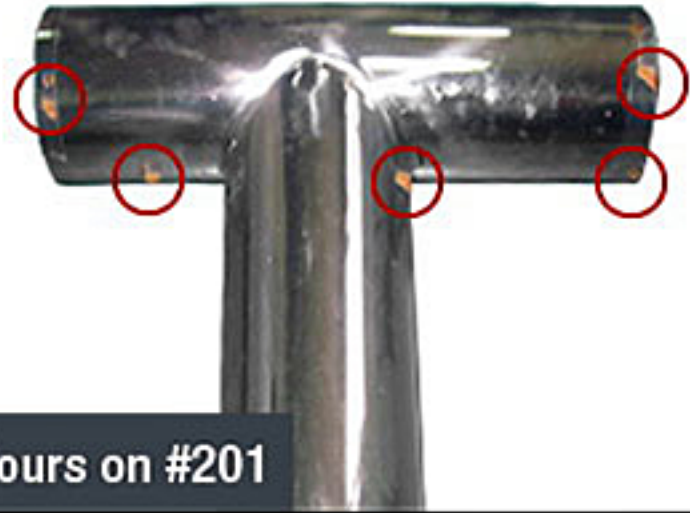
THE QUALITY YOU CAN TRUST.

To ensure perfect quality for our stainless steel bars, we only use marine grade #304 stainless steel for the highest standard of rust and corrosion resistance. Meanwhile, some similar products in the market reduce their costs by using lower grade “stainless” materials like #201.

RESULTS AFTER SALT SPRAY ANTI-RUST TESTING



96 Hours on #304



64 Hours on #201

RESULTS AFTER 3 MONTHS OF DRIVING IN SNOW CONDITIONS



Marine Grade



Cheaper “Stainless”

Only fit on Crew Cab as the circled one!
Dodge truck Cab Details

Regular Cab



(2 Doors only)

Club Cab



(2 Full-Size Front Doors & 2 Suicided Rear Doors)

Quad Cab



(2 Full-Size Front Doors & 2 Narrower Rear Doors)

Important: Before ordering, please check with your dealer to make sure your truck is with Crew Cab, NOT Quad Cab.

Crew Cab



(4 Full-Size Doors)

Mega Cab



(4 Full-Size Doors with Extra Space)