

# WHY TYGER?

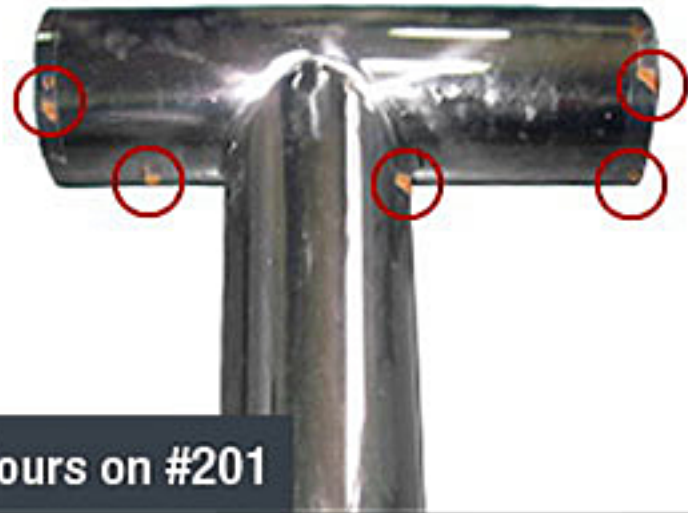
## THE QUALITY YOU CAN TRUST.

To ensure perfect quality for our stainless steel bars, we only use marine grade #304 stainless steel for the highest standard of rust and corrosion resistance. Meanwhile, some similar products in the market reduce their costs by using lower grade “stainless” materials like #201.

### RESULTS AFTER SALT SPRAY ANTI-RUST TESTING



96 Hours on #304



64 Hours on #201

### RESULTS AFTER 3 MONTHS OF DRIVING IN SNOW CONDITIONS



Marine Grade



Cheaper “Stainless”

**Only fit on Crew Cab as the circled one!**

**Chevy/GMC truck Cab Details**

**Regular Cab**



*(2 Doors only)*

**Extended Cab**  
(On/Before 2013)



*(2 Full-Size Front Doors & 2 Suicided Rear Doors)*

**Double Cab**  
(2014 - Up)



*(2 Full-Size Front Doors & 2 Narrower Rear Doors)*

**Important: Before ordering, please check with your dealer to make sure your truck is with Crew Cab, Not Double Cab.**

**Crew Cab**



*(4 Full-Size Doors)*

# For 2017 Diesel Model w/ DEF Tank only

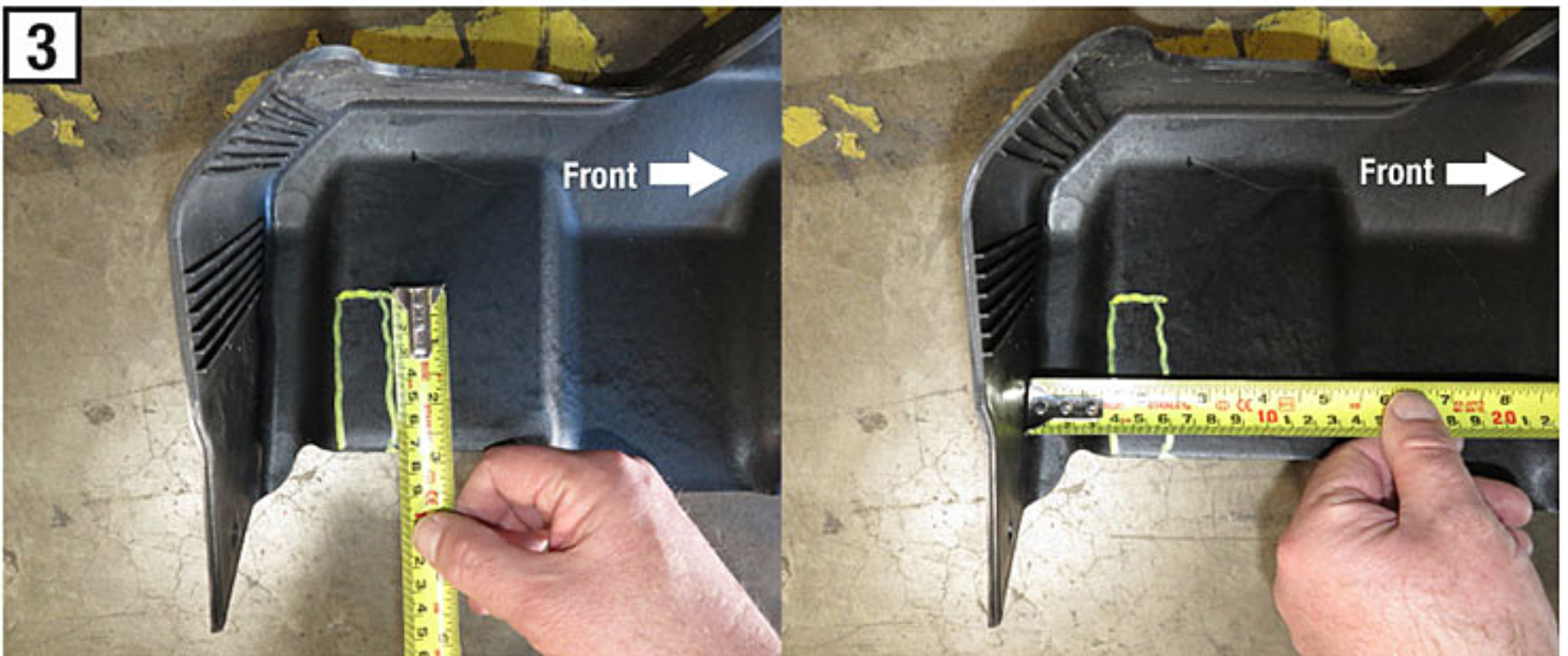
**—TRIMMING REQUIRED—**



1 Remove the DEF tank cover by taking out 4 of the Hex bolts.



2 Hold the DEF cover in place and mark the passenger side 2nd bracket mounting location onto the cover.



3 Use a sharp knife to trim a slot along the marking as little plastic as possible. Re-install the DEF tank cover and install the bracket.