

WHY TYGER?

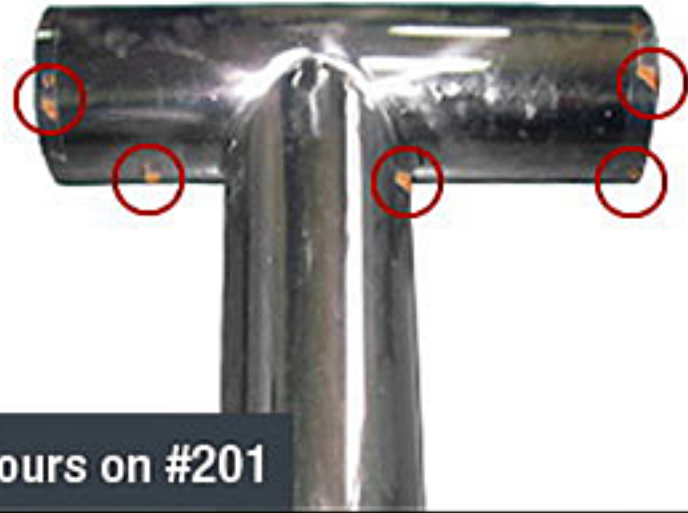
THE QUALITY YOU CAN TRUST.

To ensure perfect quality for our stainless steel bars, we only use marine grade #304 stainless steel for the highest standard of rust and corrosion resistance. Meanwhile, some similar products in the market reduce their costs by using lower grade “stainless” materials like #201.

RESULTS AFTER SALT SPRAY ANTI-RUST TESTING



96 Hours on #304



64 Hours on #201

RESULTS AFTER 3 MONTHS OF DRIVING IN SNOW CONDITIONS



Marine Grade



Cheaper “Stainless”

Only fit on Crew Cab as the circled one!

Chevy/GMC truck Cab Details

Regular Cab



(2 Doors only)

**Extended Cab
(On/Before 2013)**



(2 Full-Size Front Doors & 2 Suicided Rear Doors)

**Double Cab
(2014 - Up)**



(2 Full-Size Front Doors & 2 Narrower Rear Doors)

Important: Before ordering, please check with your dealer to make sure your truck is with Crew Cab, Not Double Cab.

Crew Cab



(4 Full-Size Doors)