



TYGER[®]

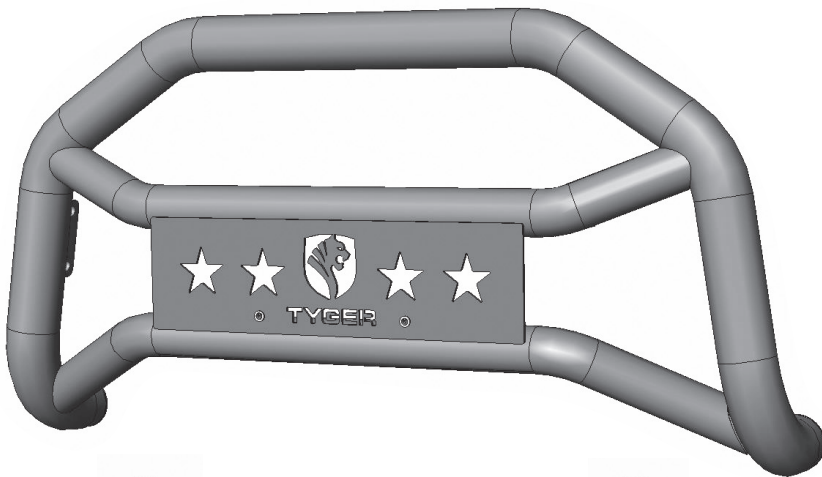
TYGER GUARD™

BEFORE INSTALLATION

READ INSTRUCTIONS CAREFULLY BEFORE STARTING INSTALLATION. REMOVE CONTENTS FROM BOX AND VERIFY ALL PARTS ARE PRESENT. ASSISTANCE IS RECOMMENDED. FAILURE TO IDENTIFY DAMAGE BEFORE INSTALLATION COULD LEAD TO A REJECTION OF ANY CLAIM. IF ANY DAMAGE FOUND, PLEASE TAKE A PICTURE FOR THE CLAIM PURPOSE.

WARNING

TEXTURED COATED FINISHES SHOULD BE CLEANED WITH A MILD SOAP ON A DAMP SPONGE. DO NOT APPLY POLISH OR WAX THAT REQUIRES TO BE REMOVED BY MEANS OF BUFFING. THIS TYPE OF WAX IS COMMONLY USED AT CAR WASH FACILITIES.



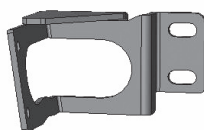
Spacer Plate



Spacer Plate



Passenger/Left Side
Mounting Bracket



Driver/RightSide
Mounting Bracket

TG-GD6F60258

NOTE: Assistance is recommended.

Parts List

- x1 Tyger Guard
- x1 Driver/Left Mounting Bracket
- x1 Passenger/Right Mounting Bracket
- x2 Spacer Plates
- x1 4mm Wrench
- x4 10-1.5mm x 35mm Hex Bolts
- x8 10mm x 27mm OD x 3mm Flat Washers
- x4 10mm Lock Washers
- x4 10mm Hex Nuts
- x2 6-1.0mm x 20mm Combo Bolts (license plate)



TYGER[®]

STEP 1

Start installation at the driver/left side, front of the vehicle. Remove the plastic cover (if equipped) covering the bumper bolts on both sides of the tow hook, (Fig 1). Remove the (2) outer bumper bolts, (Figs 2-3).

IMPORTANT: Do not remove the inner bumper bolts or the bumper may fall. Only remove the outer bumper bolts.

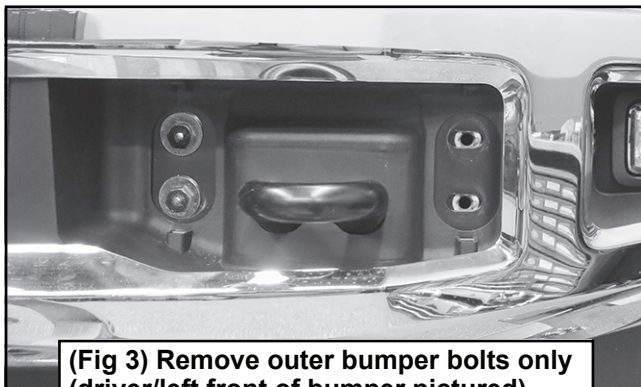
NOTE: Cover cannot be reinstalled.



(Fig 1) Remove cover over bumper bolts



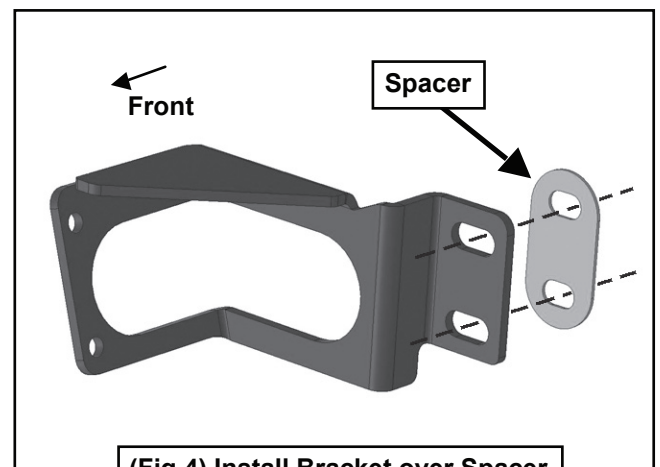
Fig 2



(Fig 3) Remove outer bumper bolts only (driver/left front of bumper pictured)

STEP 2

Select the driver side Mounting Bracket and (1) Spacer Plate, (Fig 4). Place the Spacer over the holes for the bumper bolts. Reuse the factory bumper bolts to attach the Mounting Bracket to the Spacer and bumper, (Fig 5). Make sure there is clearance between the top and bottom of the Mounting Bracket and the opening in the bumper. Do not tighten hardware at this time.



(Fig 4) Install Bracket over Spacer

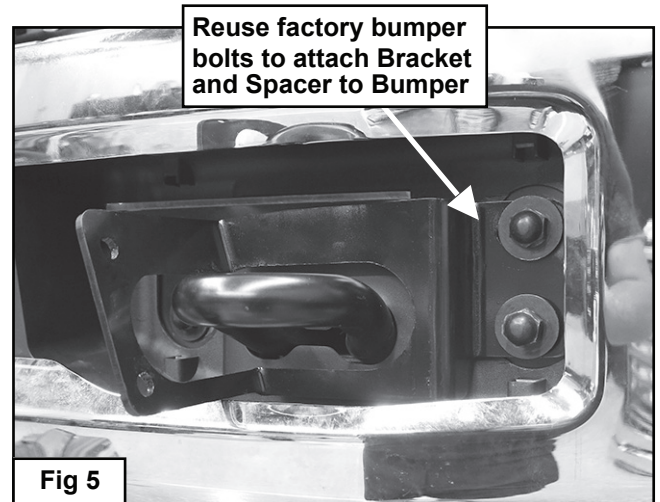


Fig 5

STEP 3

Repeat Steps 1 & 2 for passenger/right side Mounting Bracket installation.



TYGER[®]

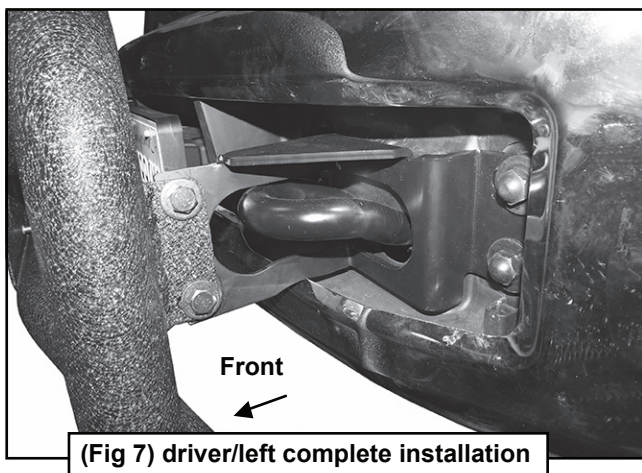
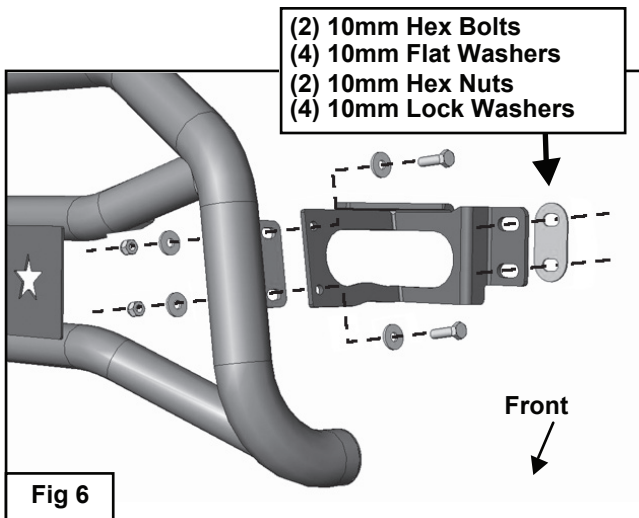
STEP 4

With assistance, position the Tyger Guard onto the outside of the (2) Mounting Brackets.

NOTE: Move the Mounting Brackets in or out to line up with the mounting tabs on the Tyger Guard.

STEP 5

Attach the Tyger Guard to the outside of the Mounting Brackets using the included (4) 10mm Lock Washer, (8) 10mm Flat Washers, (4) 10mm Hex Bolts, (4) 10mm Hex Nuts, (Figs 6-7). Snug but do not tighten.



STEP 6

Center the Tyger Guard on the vehicle, level and adjust as desired and tighten all hardware at this time.

STEP 7

Do periodic inspections to the installation to make sure that all hardware is secure and tight.

