



TYGER GUARD™

TG-GD6C60508

BEFORE INSTALLATION

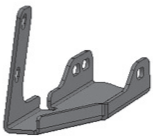
READ INSTRUCTIONS CAREFULLY BEFORE STARTING INSTALLATION. REMOVE CONTENTS FROM BOX AND VERIFY ALL PARTS ARE PRESENT. FAILURE TO IDENTIFY DAMAGE BEFORE INSTALLATION COULD LEAD TO A REJECTION OF ANY CLAIM. IF MISSING PARTS OR ANY DAMAGE FOUND, PLEASE TAKE A PICTURE FOR THE CLAIM PURPOSE.

WARNING

TO PROTECT YOUR INVESTMENT, WAX THIS PRODUCT AFTER INSTALLING. REGULAR WAXING IS RECOMMENDED TO ADD A PROTECTIVE LAYER OVER THE FINISH. DO NOT USE ANY TYPE OF POLISH OR WAX THAT MAY CONTAIN ABRASIVES THAT COULD DAMAGE THE FINISH.



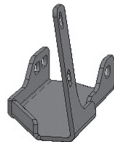
(2) Double Bolt Plates



Passenger/right Side Frame Bracket



(2) Single Bolt Plates



Driver/left Side Frame Bracket

Parts List

- x1** Tyger Guard
- x1** Driver/left Frame Bracket
- x1** Passenger/Right Frame Bracket
- x6** 12-1.75mm Nylon Lock Nuts
- x6** 12mm x 24mm OD x 2.5mm Flat Washers
- x2** 12mm x 30mm Double Bolt Plates
- x2** 12mm x 35mm Single Bolt Plates
- x4** 10-1.5mm x 30mm Hex Bolts
- x8** 10mm x 27mm OD x 2 mm Flat Washers
- x4** 10-1.5mm Nylon Lock Nuts
- x1** 4mm Wrench
- x2** 6-1.0mm x 20mm Combo Bolts (license plate)



TYGER[®]

NOTE: REMOVE CONTENTS FROM BOX. VERIFY ALL PARTS ARE PRESENT. READ INSTRUCTIONS CAREFULLY BEFORE STARTING INSTALLATION. ASSISTANCE IS RECOMMENDED. INSTALLATION MAY INTERFERE WITH FRONT BUMPER MOUNTED SENSORS.

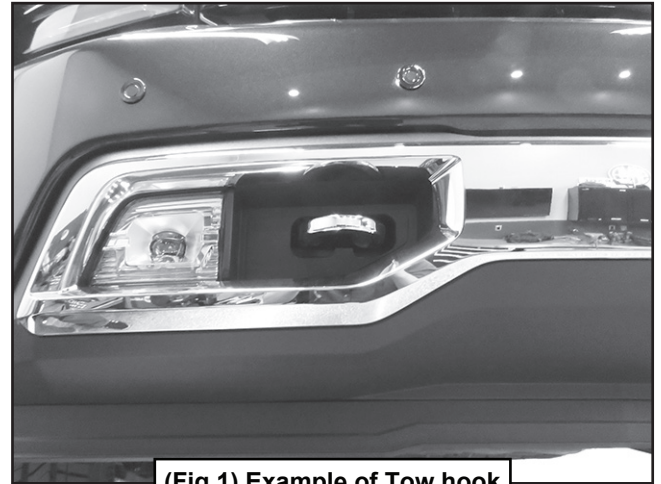
STEP 1

Start installation from under the front of the vehicle. Determine if the vehicle is equipped with tow hooks.

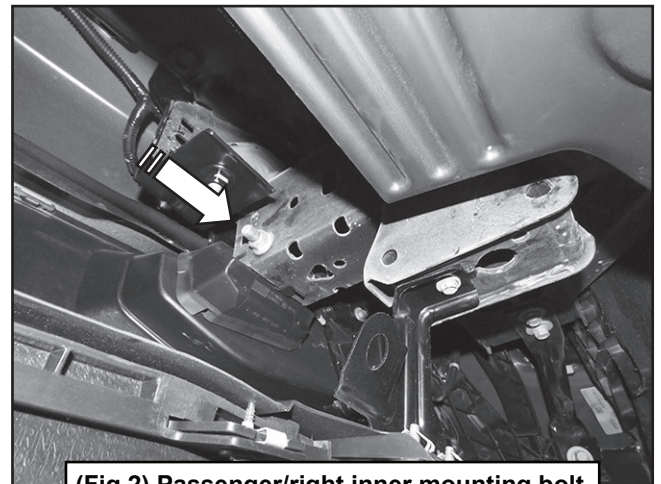
IMPORTANT: Tow hooks cannot be reinstalled with the Tyger Guard.

Tow Hook equipped vehicles:

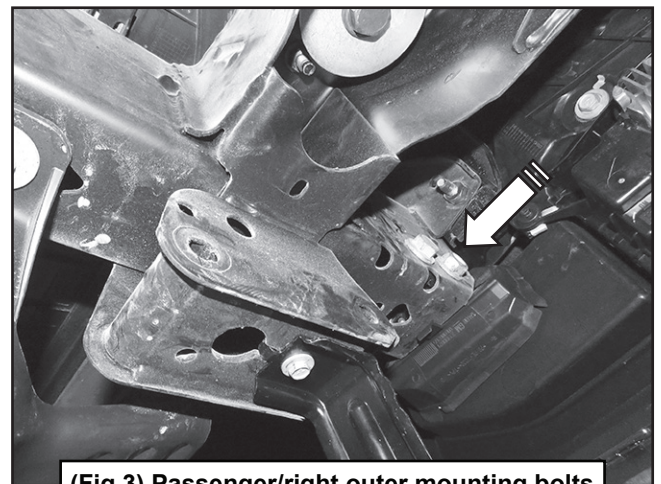
- Remove the factory tow hook from the end of each frame channel, (Figs 1-3).
- Test fit Frame Mounting Brackets through tow hook openings. Trim around openings as required for Bracket clearance.
- Proceed to Step 2.



(Fig 1) Example of Tow hook



(Fig 2) Passenger/right inner mounting bolt for tow hook pictured from behind bumper



(Fig 3) Passenger/right outer mounting bolts for tow hook pictured from behind bumper

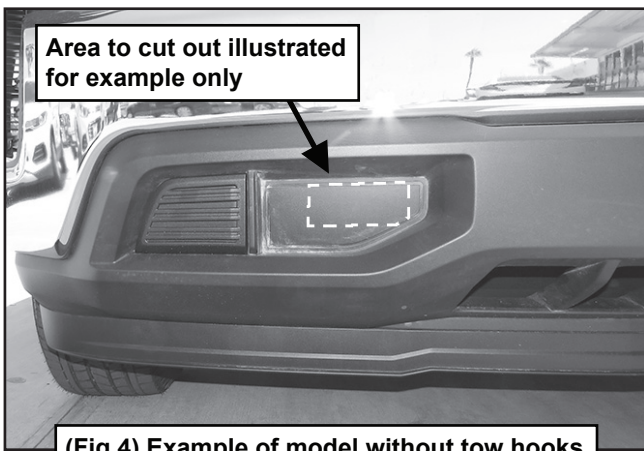


Vehicles without tow hooks:

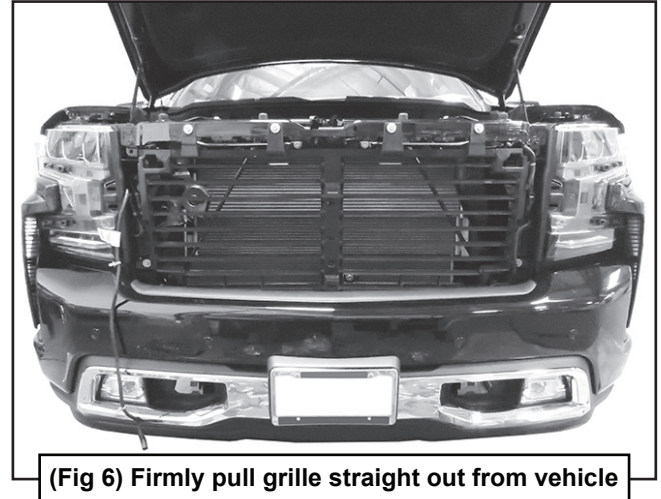
a. Cut out the indented area in both sides of the plastic bumper insert to clear the Brackets as pictured, (Fig 4).

IMPORTANT: Make several small cuts for best fit.

b. Insert the Mounting Brackets through the openings in the bumper to check for clearance. Trim the plastic as required to clear the Brackets.

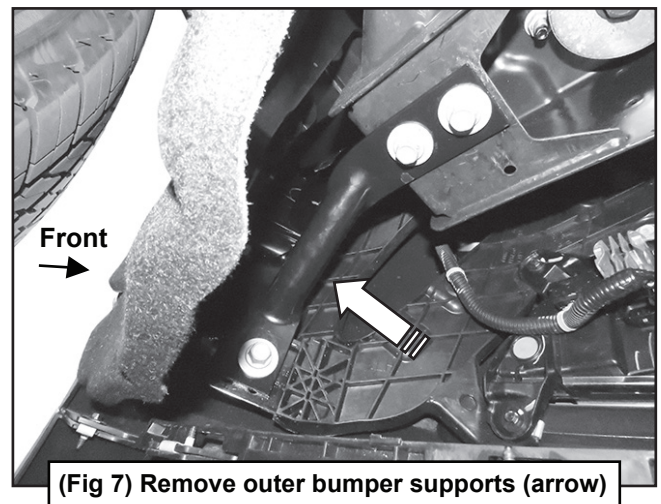


b. Firmly pull to remove the grille, (Fig 6).



c. Remove the bolts on the edges of the bumper, (Fig 7).

d. Place blocks or jack stands under the front bumper to support it during mounting bolt removal. **WARNING!** Assistance is required to hold the bumper in place during bolt removal to prevent the bumper from falling.

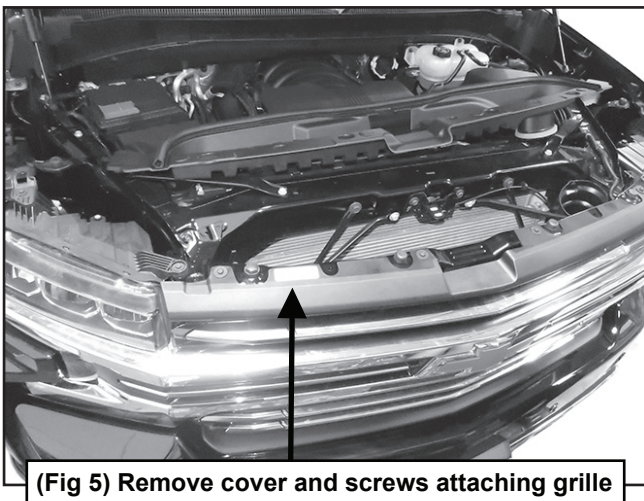


e. Pull back the rubber from the top of the bumper to reveal the top bolts attaching the bumper to the frame, (Fig 8). Remove the bolts to remove the bumper.

STEP 2

For diesel models with tow hooks, it will be necessary to remove the bumper:

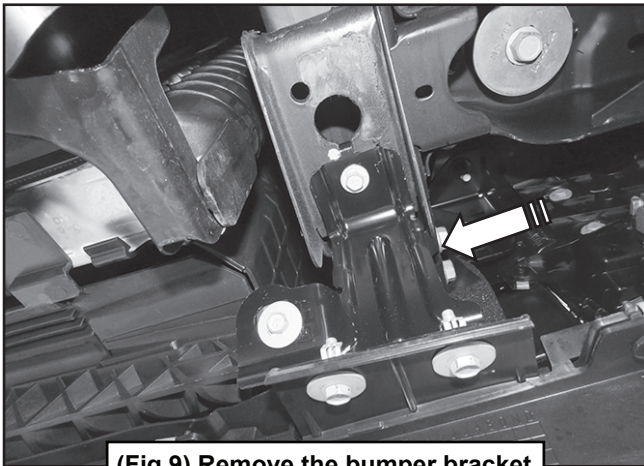
a. Remove the bolts located on the top of the grille, (Fig 5).





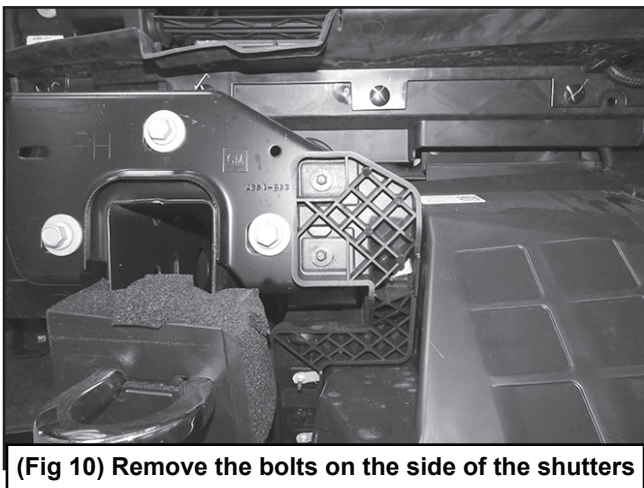
(Fig 8) Pull back cover to locate top bumper bolts

f. Remove the bolts connecting the bottom of the bumper to the lower bumper bracket. Unplug the wiring harness. Remove the lower bolts connecting the shutter to the frame, (Fig 9).

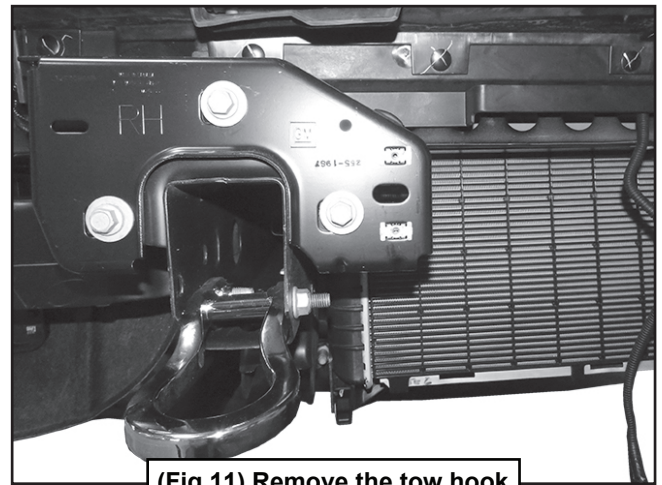


(Fig 9) Remove the bumper bracket

g. Remove the top bolts on the shutter, (Figs 10-11).



(Fig 10) Remove the bolts on the side of the shutters



(Fig 11) Remove the tow hook

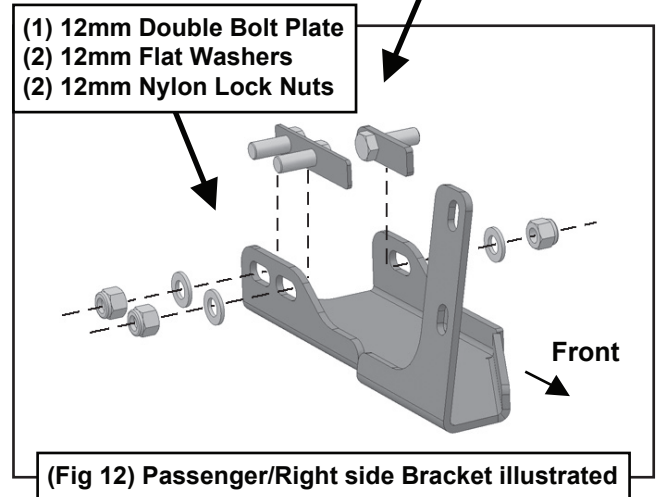
h. Remove the tow hooks.

i. Reattach the shutter and bumper to the vehicle.

STEP 3

Select the Passenger/Right Mounting Bracket. Insert the Bracket through the bumper and up to the end of the frame. Line up the holes in the Bracket with the (3) mounting bolt holes for the tow hook. Select (1) 12mm Single Bolt Plate, (Fig 13). Insert the Bolt Plate into the end of the frame, through the hole in the side of the frame and out through the Bracket. Secure the Bracket to the Bolt Plate with (1) 12mm Flat Washer and (1) 12mm Nylon Lock Nut, (Figs 12 & 14). Do not tighten hardware.

(1) 12mm Single Bolt Plate
(1) 12mm Flat Washer
(1) 12mm Nylon Lock Nut



(Fig 12) Passenger/Right side Bracket illustrated



- (1) 12mm Single Bolt Plate
- (1) 12mm Flat Washer
- (1) 12mm Nylon Lock Nut

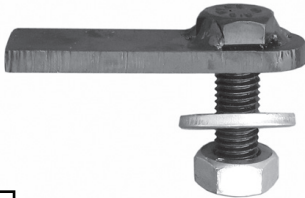
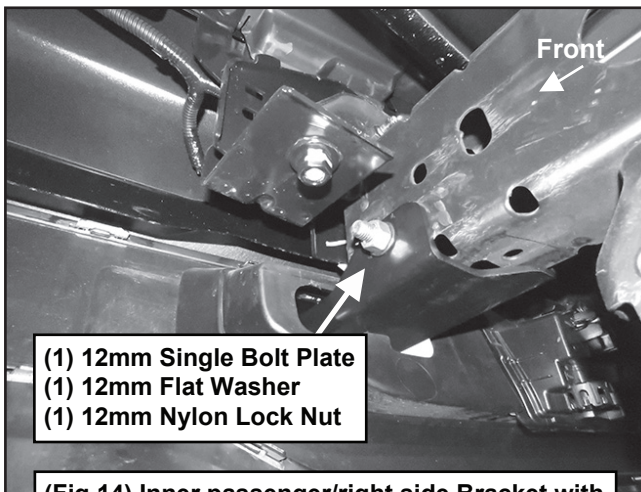


Fig 13

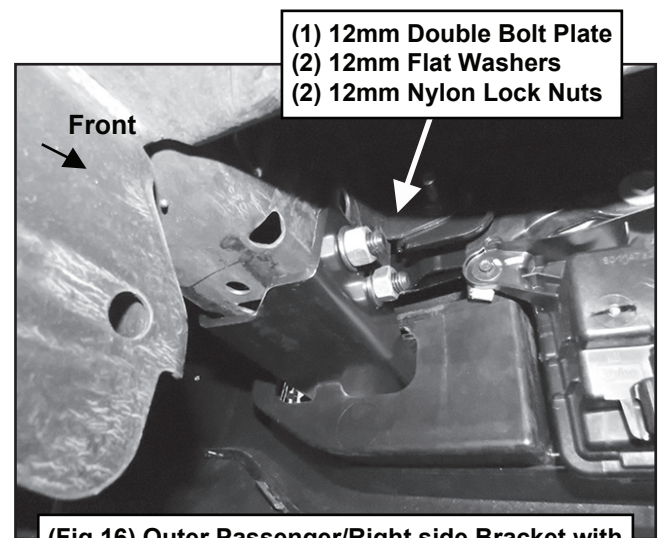
- (1) 12mm Double Bolt Plate
- (2) 12mm Flat Washers
- (2) 12mm Nylon Lock Nuts



Fig 15



(Fig 14) Inner passenger/right side Bracket with Single Bolt Plate pictured from behind camper



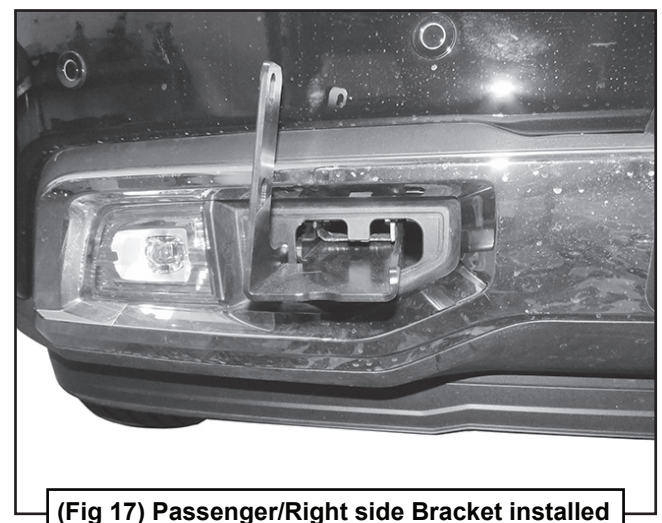
(Fig 16) Outer Passenger/Right side Bracket with Double Bolt Plate pictured from behind bumper

STEP 4

Repeat Step 3 to install the 12mm Double Bolt Plate, (Fig 15), into the remaining holes in the other side of the frame channel and Bracket, (Figs 12, 16 & 17). Do not tighten hardware.

STEP 5

Repeat Steps 3-4 to install the Driver/Left Mounting Bracket.

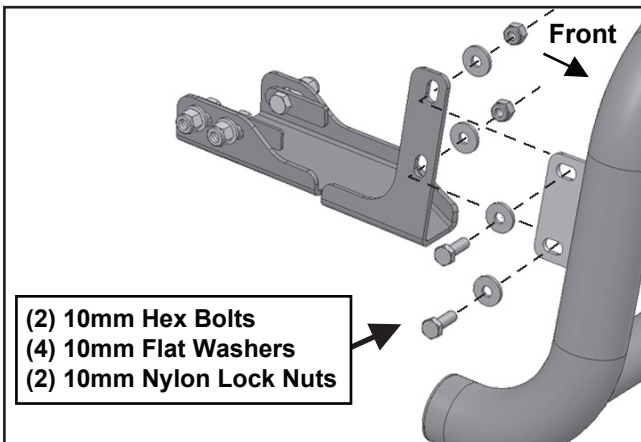


(Fig 17) Passenger/Right side Bracket installed

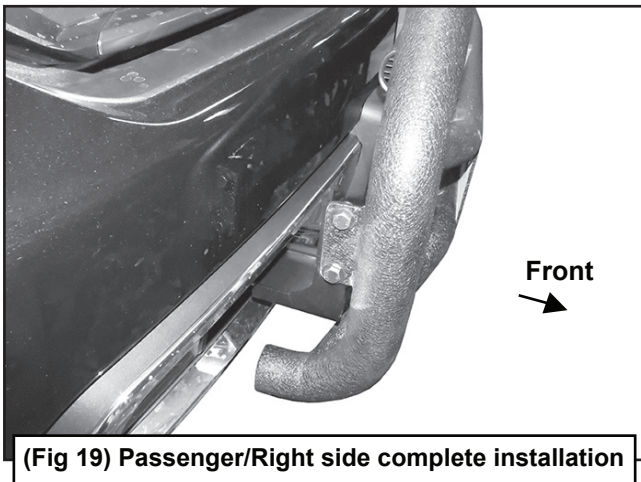


STEP 6

With assistance, hold the Tyger Guard up in position on the outside of the Mounting Brackets. Attach the Tyger Guard to the Brackets with (4) 10mm Hex Bolts, (8) 10mm Flat Washers and (4) 10mm Nylon Lock Nuts, (Fig 18-19). Do not tighten hardware at this time.



(Fig 18) Attach Tyger Guard to outside of Brackets. Passenger/Right side complete installation



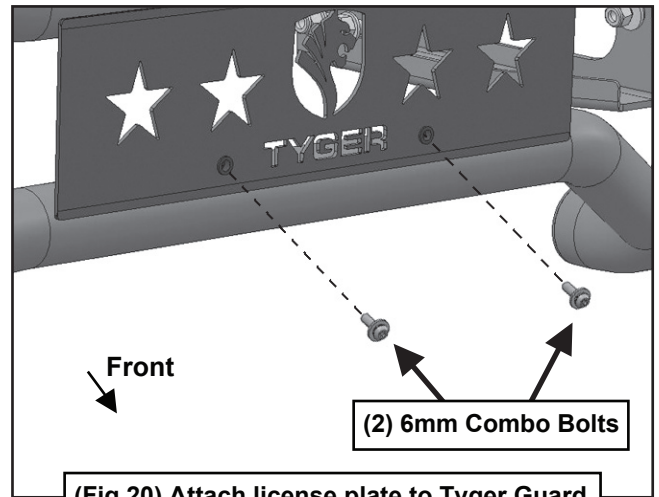
(Fig 19) Passenger/Right side complete installation

STEP 7

Check the Tyger Guard alignment with the vehicle and for clearance between the Tyger Guard and the bumper. Adjust as required then fully tighten all hardware at this time.

STEP 8

Attach the license plate, (if required), to the threaded holes in the front of the Tyger Guard with the included (2) 6mm Combo Bolts, (Fig 20).



(Fig 20) Attach license plate to Tyger Guard

STEP 9

Do periodic inspections to the installation to make sure that all hardware is secure and tight.



Complete Installation