



# TYGER®

## TYGER GUARD™

TG-GD6C60198

### BEFORE INSTALLATION

READ INSTRUCTIONS CAREFULLY BEFORE STARTING INSTALLATION. REMOVE CONTENTS FROM BOX AND VERIFY ALL PARTS ARE PRESENT. ASSISTANCE IS RECOMMENDED. FAILURE TO IDENTIFY DAMAGE BEFORE INSTALLATION COULD LEAD TO A REJECTION OF ANY CLAIM. IF ANY DAMAGE FOUND, PLEASE TAKE A PICTURE FOR THE CLAIM PURPOSE.

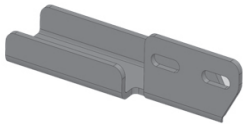
### WARNING

TEXTURED COATED FINISHES SHOULD BE CLEANED WITH A MILD SOAP ON A DAMP SPONGE. DO NOT APPLY POLISH OR WAX THAT REQUIRES TO BE REMOVED BY MEANS OF BUFFING. THIS TYPE OF WAX IS COMMONLY USED AT CAR WASH FACILITIES.

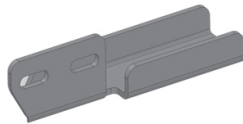
NOTE: Cutting may be required. Installation may interfere with bumper mounted parking sensors. Assistance is recommended.

### Parts List

- x1 Tyger Guard
- x1 Driver/Left Tube Mounting Bracket
- x1 Passenger/Right Tube Mounting Bracket
- x1 Driver/Left Frame Mounting Bracket
- x1 Passenger/Right Frame Mounting Bracket
- x4 10-1.5mm x 35mm Hex Bolts
- x8 10mm x 27mm OD x 3mm Flat Washers
- x4 10mm Nylon Lock Nuts
- x4 8-1.25mm x 35 Hex Bolts
- x4 8mm x 24mm x 2mm Flat Washers
- x4 8mm Lock Washers
- x4 12-1.75mm x40mm Hex Bolts
- x4 12mm Lock Washers
- x4 12mm x 24mm OD x 2.5mm Flat Washers
- x2 6-1.0mm x 20mm Combo Bolts
- x1 4mm Allen Wrench
- x2 Square Spacer Plates (76mm x 76mm x 6mm)



Passenger/right Side Frame Mounting Bracket



Driver/left Side Frame Mounting Bracket



Passenger/right Side Tube Mounting Bracket



Driver/left Side Tube Mounting Bracket



# TYGER<sup>®</sup>

## STEP 1

Starting at the drivers/left side, remove the two factory bolts and the tow hook if equipped (Figs 1A-1B).

**NOTE:** This Tyger Guard is not compatible with factory tow hooks and they cannot be reinstalled.

### Vehicles without tow hooks:

- Temporarily remove the lower bumper cover and place it on a clean, stable work surface.

Remove the factory tow hook and hardware. Tow hook will not be reinstalled

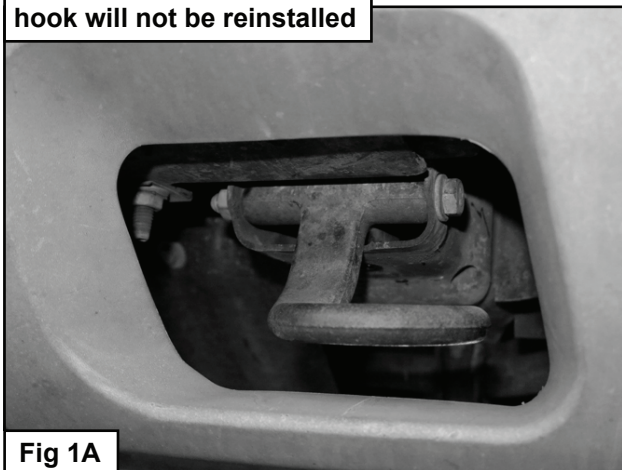
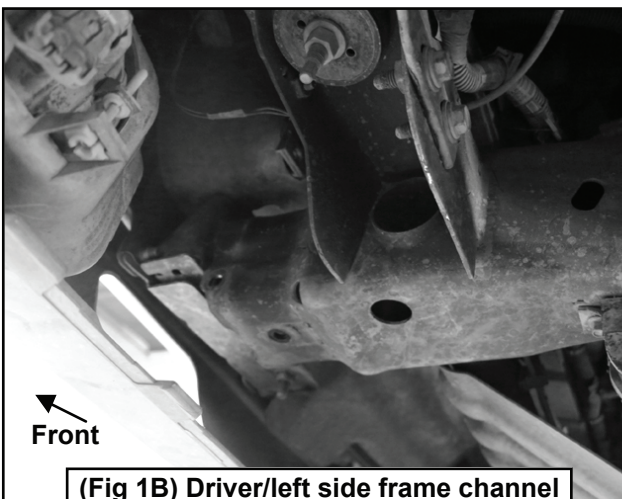


Fig 1A



(Fig 1B) Driver/left side frame channel without tow hook pictured from below

## STEP 2

Select the driver/left side Frame Mounting Bracket and the driver/left side Tube Mounting Bracket. Bolt the Tube Bracket to the Frame Bracket using the included (2) 10mm Hex Bolts, (4) 10mm Flat Washers and (2) 10mm Nylon Lock Nuts, (Figs 2-3).

**NOTE:** Each mounting tab on the Tube Bracket has (3) slots. Determine the correct mounting position for the Tyger Guard.

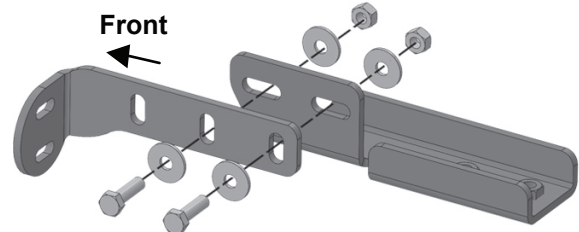
### 99-02 Vehicles:

- Bolt the Tube Bracket to the Mounting Bracket using the forward and center slots only. Do not tighten hardware at this time.

### 03-06, 07 "Classic" Model Vehicles:

- Bolt the Tube Bracket to the Mounting Bracket using the center and rear slots only. Do not tighten hardware at this time.

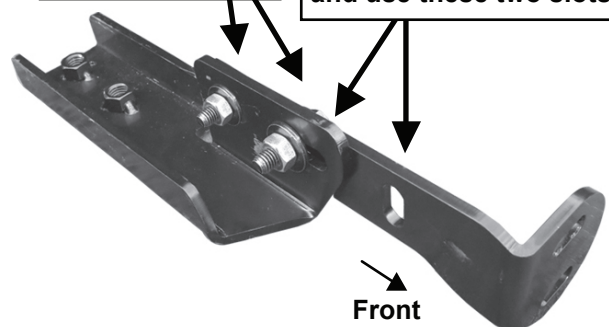
(2) 10mm Hex Bolts  
(4) 10mm Flat Washers  
(2) 10mm Nylon Lock Nuts



(Fig 2) driver/left Tube Bracket to Frame Mounting Bracket

99-02 push Tyger Guard in and use these two slots

03-06, 07 "classic," pull Tyger Guard outward and use these two slots



(Fig 3) driver/left Tube to Frame Bracket Assembly



# TYGER<sup>®</sup>

## STEP 3

Slide the Frame Bracket into the open end of the frame channel accessible through the opening in the bumper cover for the tow hook, if equipped.

## STEP 4

Line up the (2) welded nuts on the Frame Bracket with the (2) factory holes in the bottom of the frame channel. Insert (1) 12mm x 40mm Hex Bolt, (1) 12mm Flat Washer, (1) 12mm Lock Washer and (1) Spacer Plate through the large hole in the bottom of the frame channel and into the threaded nut on the Frame Bracket. Insert (1) 12mm x 40mm Hex Bolt, (1) 12mm Flat Washer and (1) 12mm Lock Washer into the remaining factory hole in the frame channel, (Figs 4-6). Do not tighten the hardware.

## STEP 5

Repeat Steps 2-4 for driver/left side Frame Bracket installation.

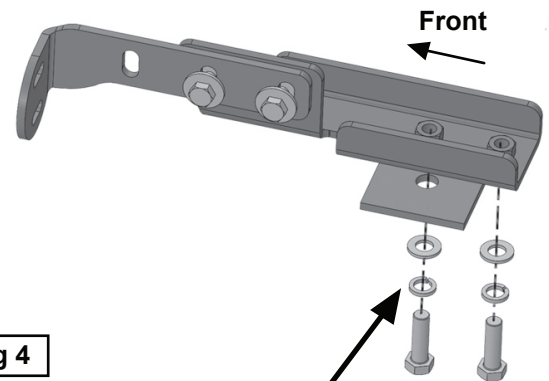
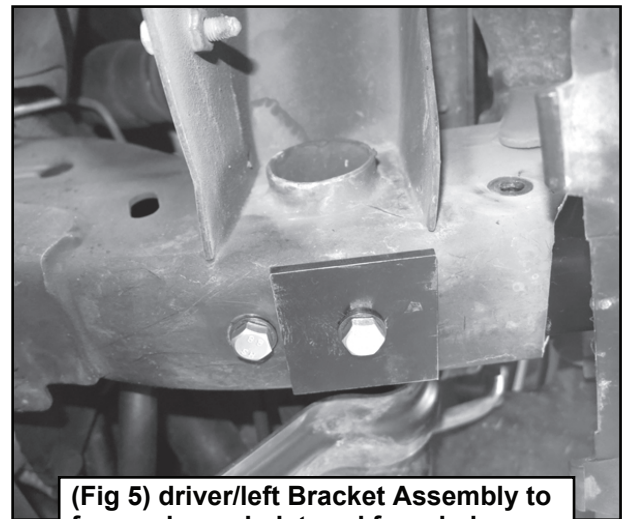
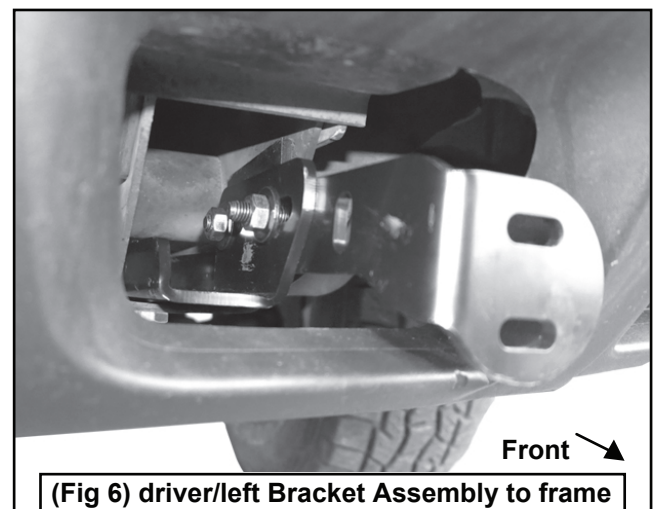


Fig 4

(2) 12mm Hex Bolts  
(2) 12mm Lock Washers  
(2) 12mm Flat Washers



(Fig 5) driver/left Bracket Assembly to frame channel pictured from below



(Fig 6) driver/left Bracket Assembly to frame channel pictured from front of vehicle

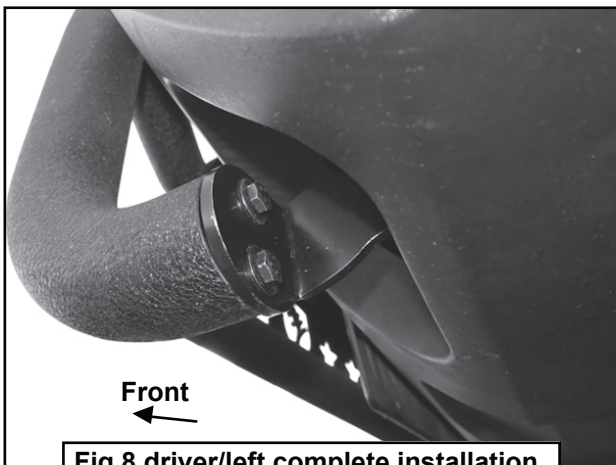
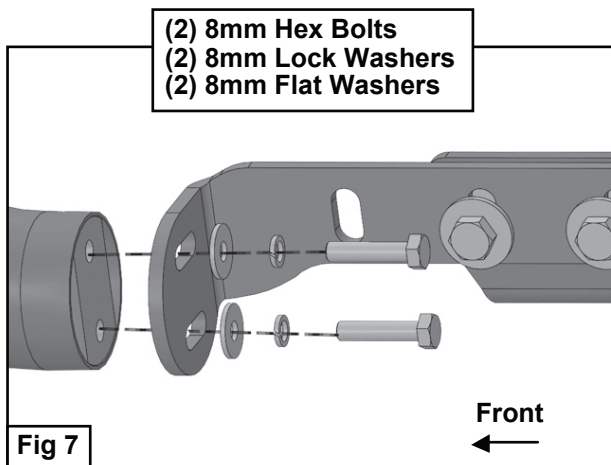


# TYGER®

## STEP 6

Next, select the driver side Upper Mounting Bracket, (Fig 7). Attach the Mounting Bracket to the inside of the Frame Bracket with the included (2) 10mm Hex Bolts, (4) 10mm Flat Washers and (2) 10mm Nylon Lock Nuts, (Fig 7). Leave hardware loose at this time.

**NOTE:** On some models, it may be possible or simpler to bolt the Frame and Mounting Brackets together first and install as one piece.



## STEP 7

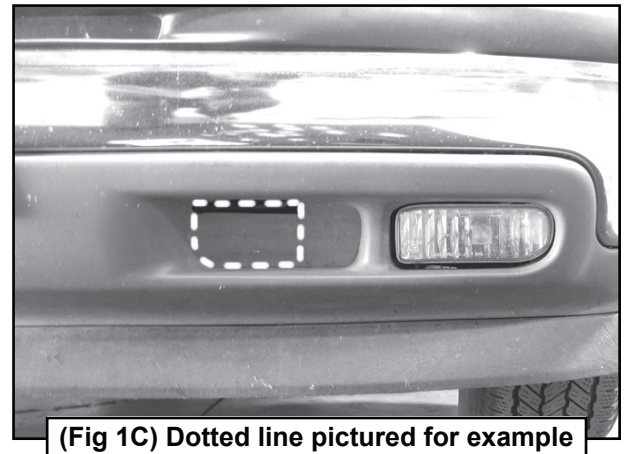
Level, center and adjust the Tyger Guard.

### Vehicles equipped with tow hooks:

- Tighten all hardware at this time.

### Vehicles without tow hooks:

- Tighten the 12mm hardware bolting the Brackets to the frame channel only. Temporarily remove the Tyger Guard. Hold the lower bumper cover up to the (2) Frame Brackets. Mark the location of the Brackets onto the back of the plastic bumper cover. Carefully cut out the indented fill panel in the plastic bumper to clear the (2) Brackets. For a clean installation, remove as little material as necessary to clear the Brackets (Fig 1C). Once properly cut, reinstall the plastic cover with the factory hardware. Reinstall the Tyger Guard and tighten all hardware.



## STEP 8

Do periodic inspections to the installation to make sure that all hardware is secure and tight.

