



TYGER®

TYGER GUARD™

BEFORE INSTALLATION

READ INSTRUCTIONS CAREFULLY BEFORE STARTING INSTALLATION. REMOVE CONTENTS FROM BOX AND VERIFY ALL PARTS ARE PRESENT. ASSISTANCE IS RECOMMENDED. FAILURE TO IDENTIFY DAMAGE BEFORE INSTALLATION COULD LEAD TO A REJECTION OF ANY CLAIM. IF ANY DAMAGE FOUND, PLEASE TAKE A PICTURE FOR THE CLAIM PURPOSE.

WARNING

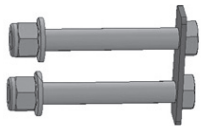
TEXTURED COATED FINISHES SHOULD BE CLEANED WITH A MILD SOAP ON A DAMP SPONGE. DO NOT APPLY POLISH OR WAX THAT REQUIRES TO BE REMOVED BY MEANS OF BUFFING. THIS TYPE OF WAX IS COMMONLY USED AT CAR WASH FACILITIES.



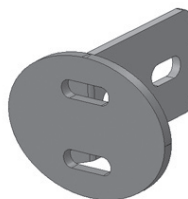
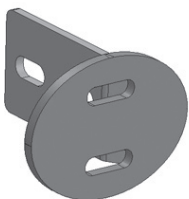
Passenger/Right Mounting Bracket



Driver/Left Mounting Bracket



(2) 12mm x 100mm Double Bolt Plates



(2) Tyger Guard Tube Mounting Brackets (fit left or right)

TG-GD6C60148

NOTE: Cutting may be required. Installation may interfere with front mounted sensors.

Parts List

- x1 Tyger Guard
- x1 Driver/left Mounting Bracket
- x1 Passenger/right Mounting Bracket
- x2 Tube Mounting Brackets
- x4 10-1.5mm x 35mm Hex Bolts
- x8 10mm x 27mm OD x 2 mm Flat Washers
- x4 10-1.5mm Nylon Lock Nuts
- x4 12-1.75mm Nylon Lock Nuts
- x4 12mm x 24mm OD x 2.5mm Flat Washers
- x2 12-1.75mm x 100mm Double Bolt Plates
- x4 8-1.25mm x 35mm Hex Bolts
- x4 8mm Lock Washers
- x4 8mm x 22mm OD x 2mm Flat Washers
- x2 6mm x 20mm Combo Bolts
- x1 4mm Allen Wrench



TYGER[®]

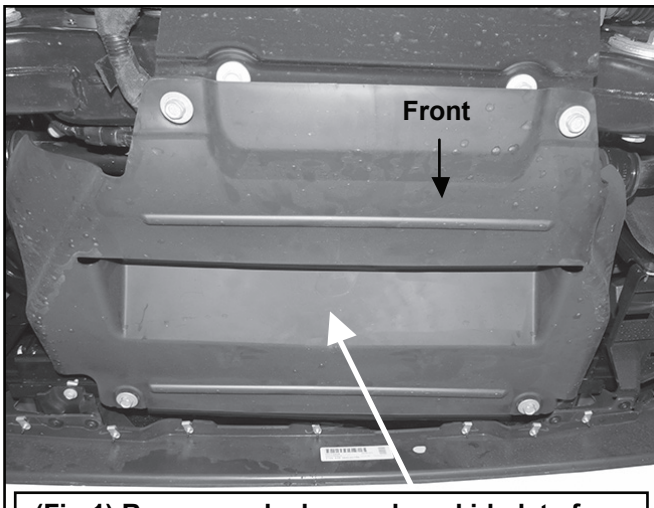
STEP 1

Start installation from under the front of the vehicle. Remove the plastic splash guard from below-behind bumper, (Fig 1). Determine if the vehicle is equipped with tow hooks.

IMPORTANT: Tow hooks cannot be reinstalled with the Tyger Guard. Also, it may be necessary to temporarily remove the factory skid plate, (if equipped), to access the mounting locations.

Tow Hook equipped vehicles:

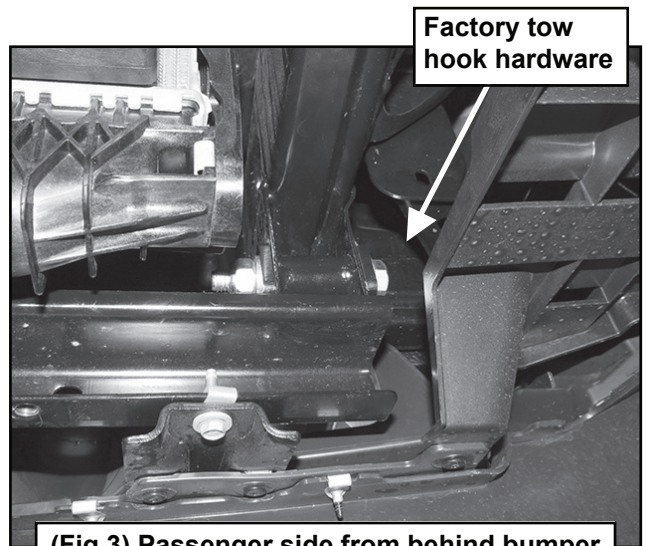
- Remove the driver side tow hook and hardware from the end of the frame channel, (Figs 2, 3). Remove the seal between the opening in the bumper and the tow hook, (Figs 2, 4).
- Repeat to remove the passenger side tow hook.
- Proceed to Step 2.



(Fig 1) Remove splash guard or skid plate from bottom of engine behind bumper if necessary



(Fig 2) Passenger side with tow hook



(Fig 3) Passenger side from behind bumper



(Fig 4) Driver side after tow hook removed



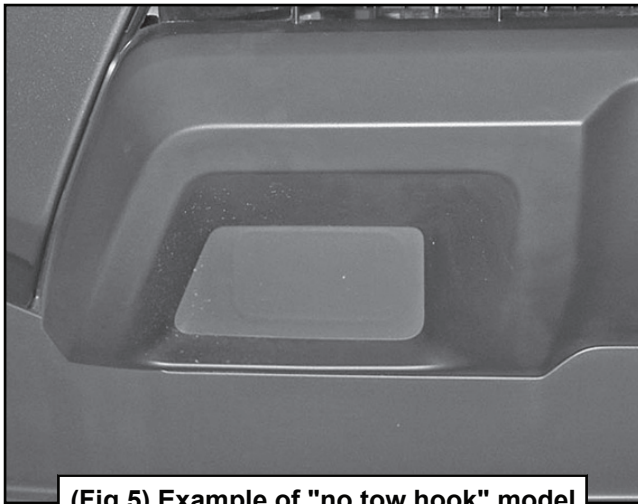
TYGER[®]

Vehicles without tow hooks:

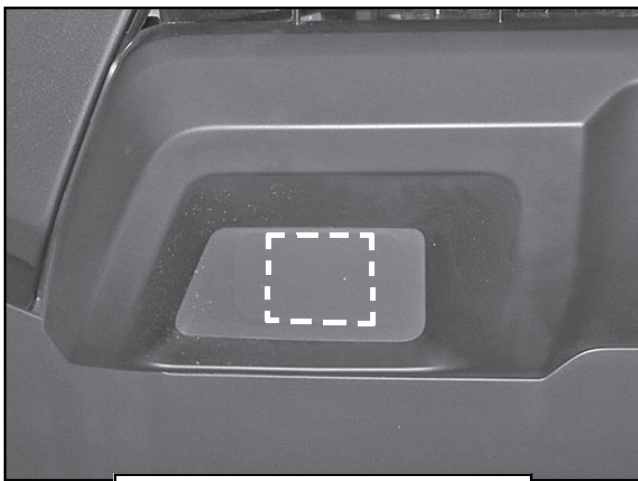
a. Cut out the indented area in both sides of the plastic bumper to clear the Brackets as pictured, (Figs 5, 6).

IMPORTANT: Make several small cuts for best fit.

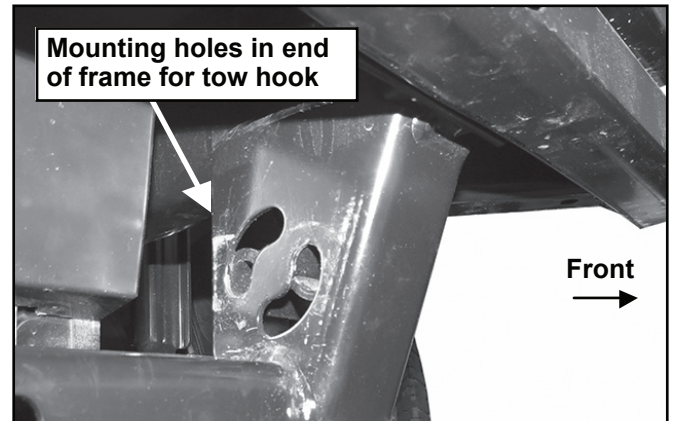
OPTION: Cut around the Bracket as indicated, (Fig 6), or cut along the rectangular cut line molded into the pocket, (Fig 4).



(Fig 5) Example of "no tow hook" model



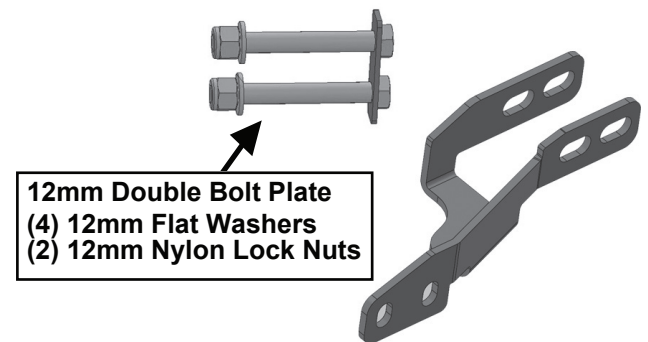
(Fig 6) Passenger side cut out illustrated for reference only



Mounting holes in end of frame for tow hook

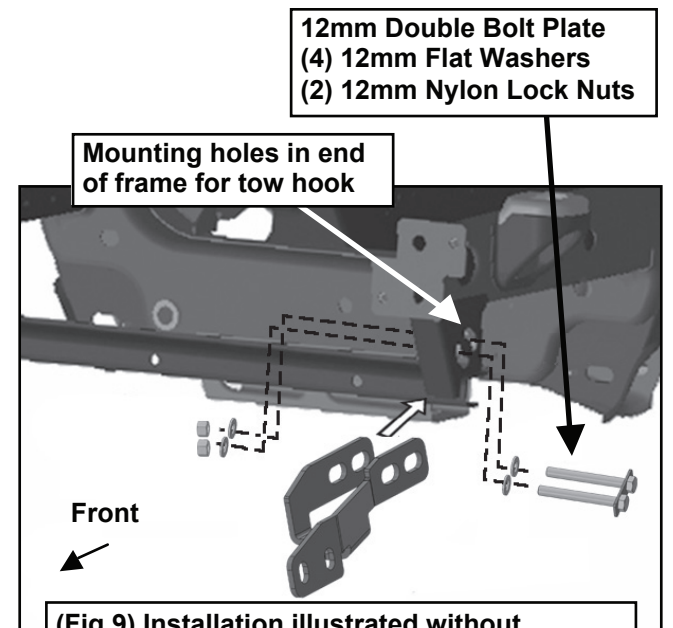
Front
→

(Fig 7) Driver side pictured without bumper for instruction purposes only. Do not remove bumper



12mm Double Bolt Plate
(4) 12mm Flat Washers
(2) 12mm Nylon Lock Nuts

(Fig 8) Driver/left Mounting Bracket and 12mm Double Bolt Plate



12mm Double Bolt Plate
(4) 12mm Flat Washers
(2) 12mm Nylon Lock Nuts

Mounting holes in end of frame for tow hook

Front
←

(Fig 9) Installation illustrated without bumper cover for instruction purposes only. Do not remove bumper cover.

STEP 2

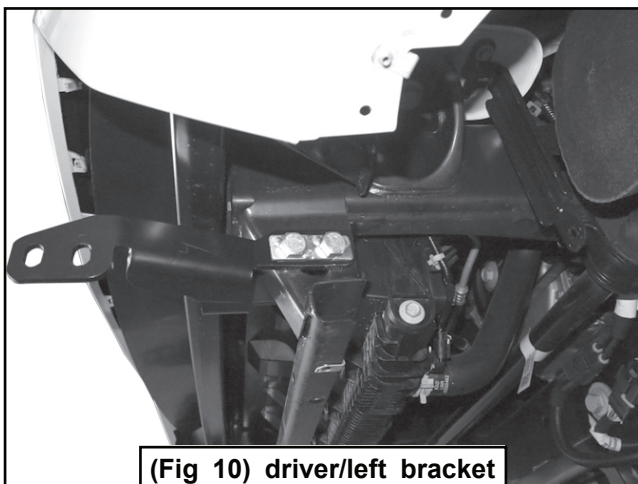
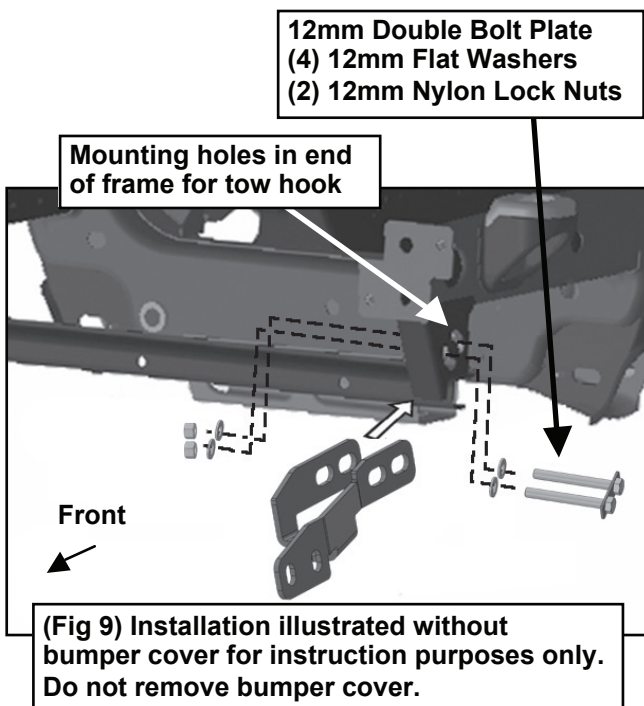
Select the driver side Mounting Bracket (Fig 8). Insert the Bracket through the opening in the bumper and up to the tow hook mounting holes, (Figs 7, 9). Trim the plastic as required for clearance.



TYGER[®]

STEP 3

Line up the (2) holes in the Bracket with the (2) holes in the frame for the tow hook, (Fig 7). Select the 12mm Double Bolt Plate, (Fig 8). Insert the Bolt Plate through the Bracket and the (2) holes through the frame, (Figs 7, 9). Secure with (2) 12mm Flat Washers and (2) 12mm Nylon Lock Nuts, (Fig 9-10). Do not fully tighten hardware at this time.



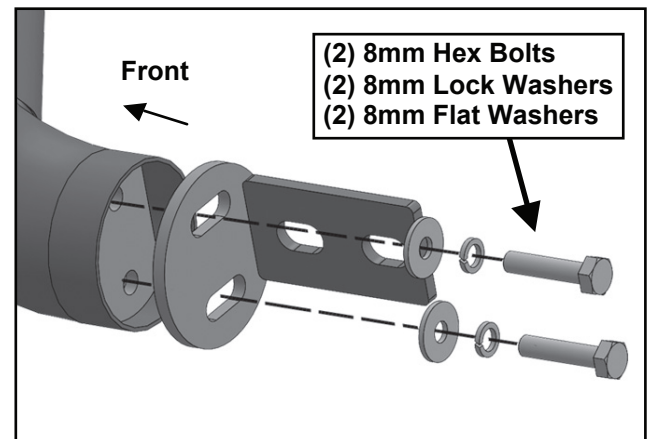
(Fig 10) driver/left bracket Mounting Bracket to frame

STEP 4

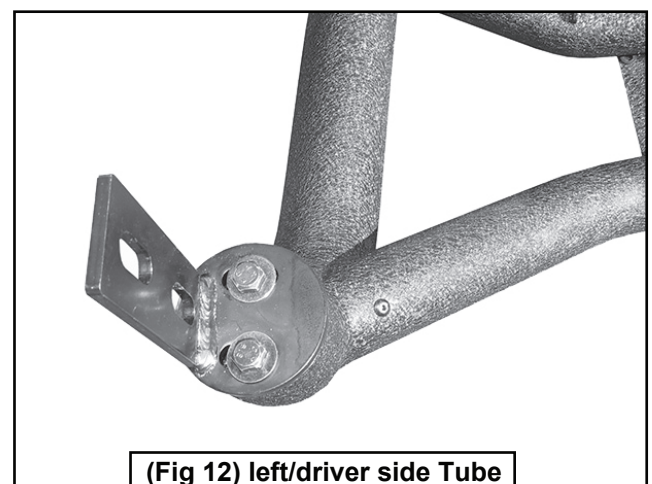
Repeat Steps 2-3 to install the passenger side Mounting Bracket.

STEP 5

Next, select (1) Tyger Guard Bracket. Attach the Bracket to the end of the Tyger Guard with (2) 8mm Hex Bolts, (2) 8mm Lock Washers and (2) 8mm Flat Washers, (Figs 11-12). Do not fully tighten hardware at this time. Repeat to attach the remaining Tyger Guard Bracket to the passenger/right side.



(Fig 11) Attach Tube Bracket to end of Tyger Guard



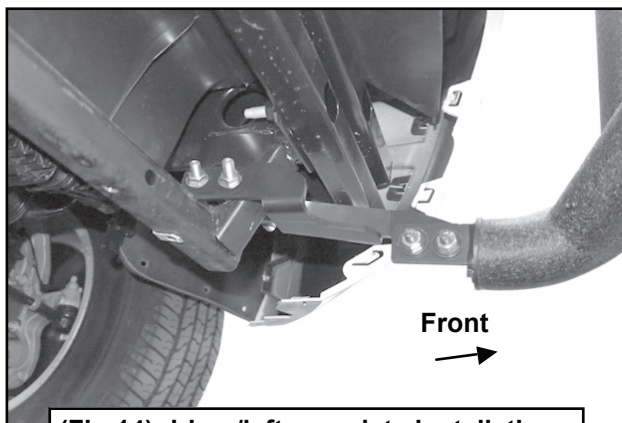
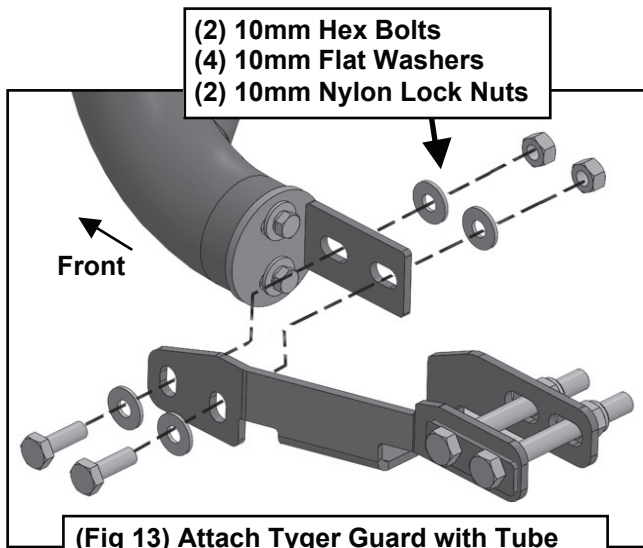
(Fig 12) left/driver side Tube Bracket to Tyger Guard



TYGER[®]

STEP 6

With assistance, hold the Tyger Guard with Brackets up in position on the inside of the Mounting Brackets. Attach the Tyger Guard to the Brackets with (4) 10mm Hex Bolts, (8) 10mm Flat Washers and (4) 10mm Nylon Lock Nuts, (Fig 13-14). Do not tighten hardware at this time.

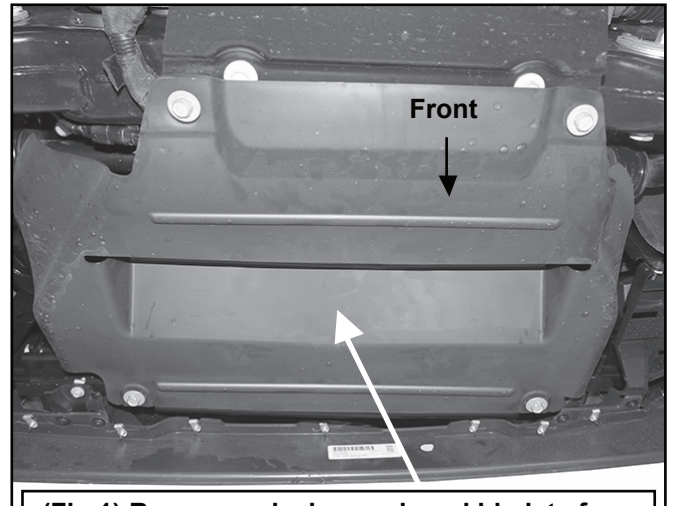


STEP 7

Check the Tyger Guard alignment with the vehicle and for clearance between the Tyger Guard and the bumper. Adjust as required then fully tighten all hardware.

STEP 8

Reinstall the plastic splash guard or skid plate removed in Step 1, (Fig 1).



STEP 9

Do periodic inspections to the installation to make sure that all hardware is secure and tight.

