

WHY TYGER?

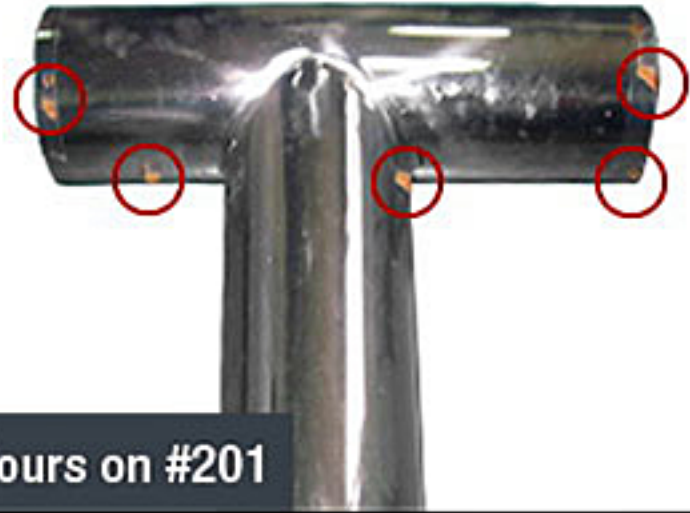
THE QUALITY YOU CAN TRUST.

To ensure perfect quality for our stainless steel bars, we only use marine grade #304 stainless steel for the highest standard of rust and corrosion resistance. Meanwhile, some similar products in the market reduce their costs by using lower grade “stainless” materials like #201.

RESULTS AFTER SALT SPRAY ANTI-RUST TESTING



96 Hours on #304



64 Hours on #201

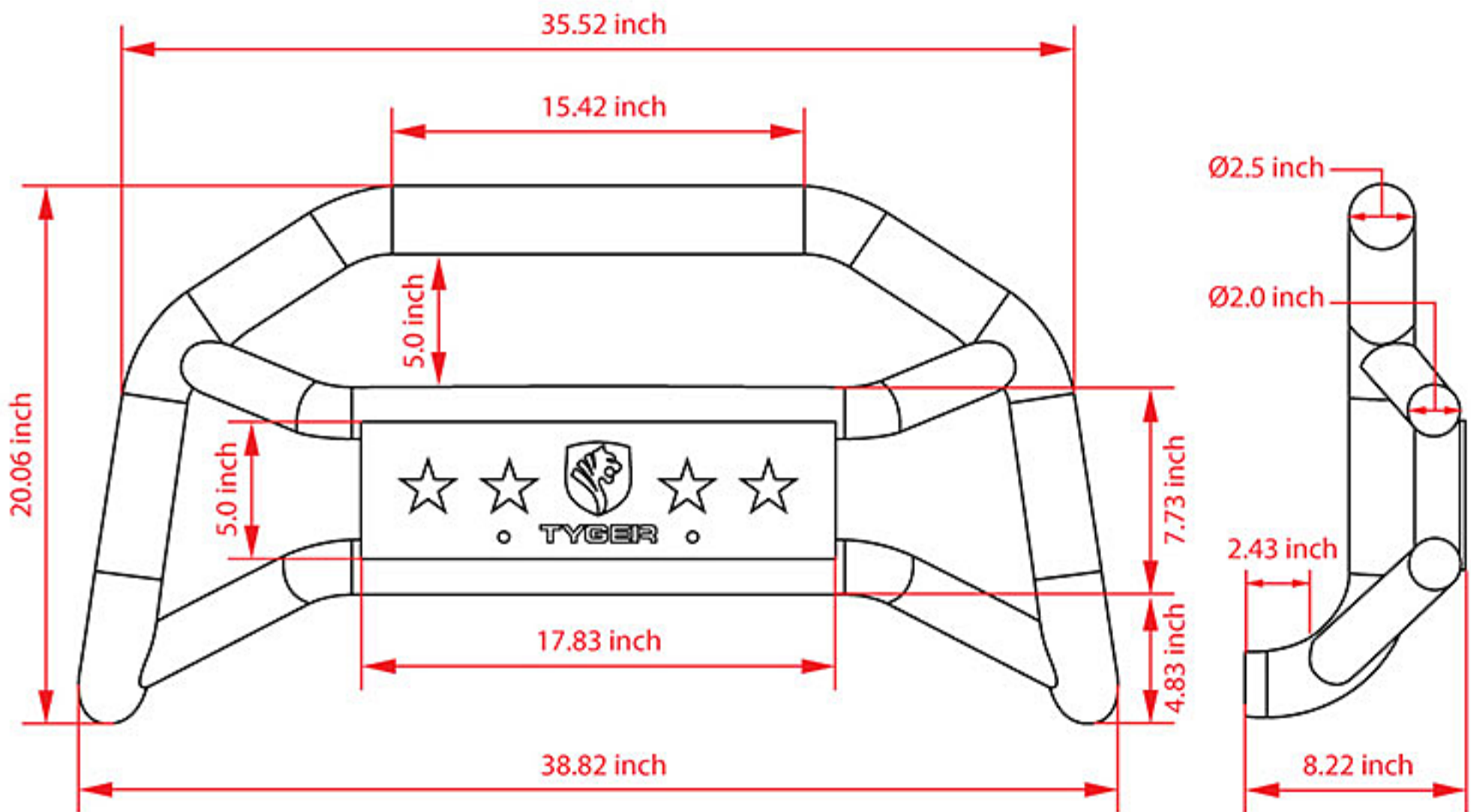
RESULTS AFTER 3 MONTHS OF DRIVING IN SNOW CONDITIONS



Marine Grade



Cheaper “Stainless”



All mounting hardware and DIY instruction included.



Pre-welded channel for light mounting.

(Lights NOT included.)



TG-GD2U28888

Pre-welded light mount channel behind the middle cross bar for LED lights up to 18inch in width. For the 20inch LED light bar, you may need extra bracket #TG-GD2U27777 to mount on.

For lights over 5inch, you can mount them on the top cross bar with extra TYGER light clamps TG-GD2U28888 which are sold separately.



Two pre-drilled holes for license plate relocation, if needed.

