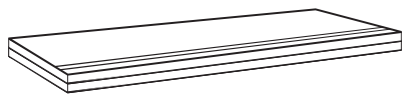


## T5 ALLOY TRI-FOLD COVER

Verify all parts are present and free from any defects or damage before installing. (Refer to part list below)



**x1** Bed Cover



**SP-BC0003**  
**x1** Front Seal Strip  
67" x 1" x 0.4"

**SP-BC0004**  
**x1** Front Seal Strip  
67" x 1.4" x 0.16"

**SP-BC0005**  
**x1** Rear Seal Strip  
79" x 1.2" x 0.24"

**SP-BC3002**  
**x4** Clamp Pad

**SP-BC3003**  
**x6** Toyota

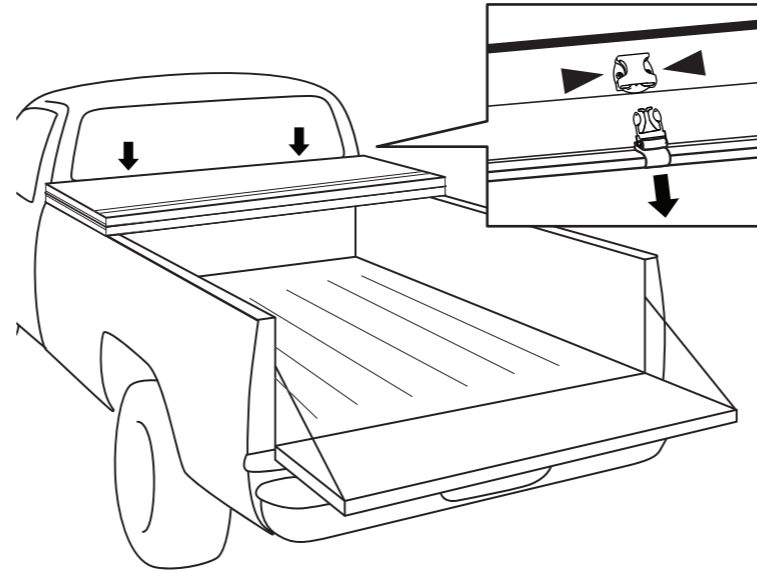
**SP-BC3004**  
**x6** Nissan Titan

**SP-BC3005**  
**x6** Nissan Frontier

**SP-BC0006**  
**x1** Tool

### STEP 1

Clean truck bed thoroughly before installation. Place the cover on the truck bed against the bulkhead, release safety buckles. Unfold the cover all the way towards the tailgate making sure it's even on all sides, then, carefully fold back up towards the cab without shifting the cover

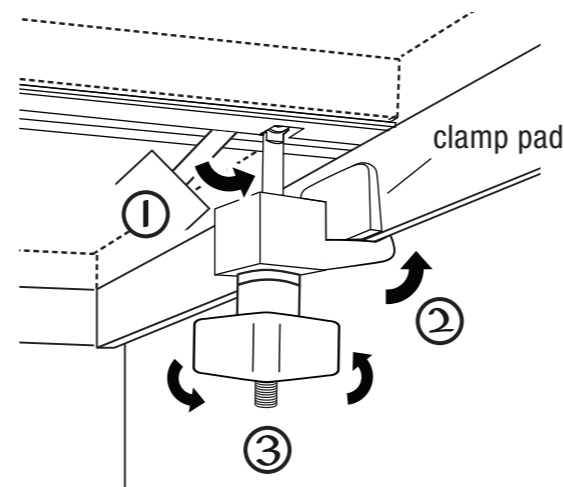


### STEP 2

#### Securing Front Clamps

Please refer to supplemental instruction for utility track bracket installation for Toyota and Nissan models.

1. Pull down front clamps into vertical position. Horizontal position can be adjusted by moving the clamps along the channel.
2. Hook jaw portion of the clamp under the metal bed rail lip. Clamp pad can be applied as below diagram to protect paint.
3. Turn the knob until side Q-seal is compressed and clamp is snugly attached.



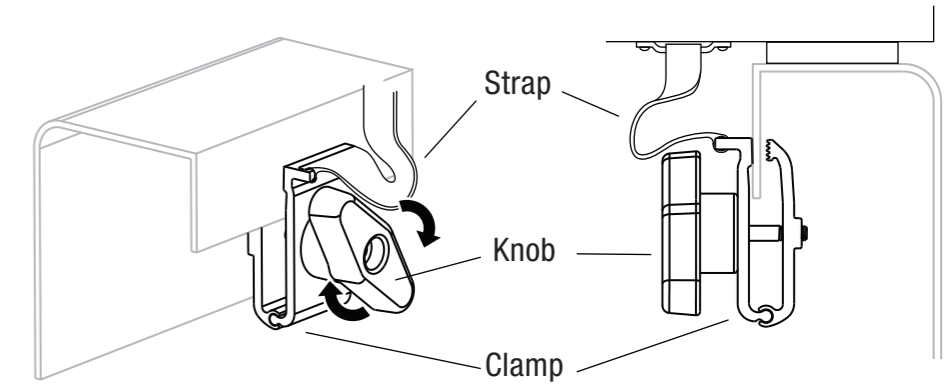
**NOTE:** Clamp must make solid contact with the metal bed rail lip for the cover to be secure. (See Fig 1- 3 in Safety Notes)

### STEP 3

#### Securing Safety Clamps

Turn the knob counterclockwise to loosen the clamp with the strap that's connected to the bed cover panel. Attach clamp to the metal bed rail lip on both side, then tighten. Must make sure safety clamps are in direct contact with the metal part of the bed rail lips.

**NOTE:** Warranty will be voided if the safety clamps are not secured properly when vehicle in motion.

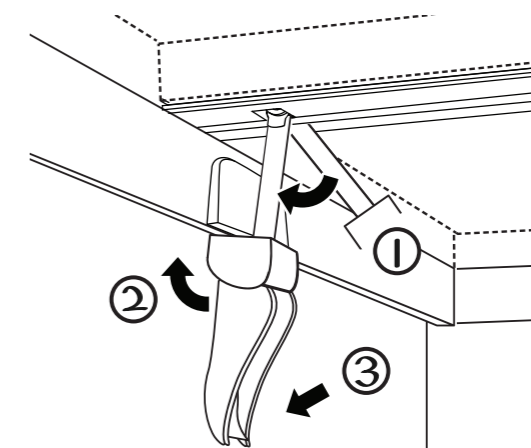


### STEP 4

#### Securing Rear Clamps and Cover

Unfold the cover all the way to the tailgate; make sure it's even on both sides.

1. Pull down rear clamps into vertical position. Horizontal position can be adjusted by moving the clamps along the channel.
2. Hook jaw portion of the clamp under the metal bed rail lip. Clamp pad can be applied as below diagram to protect paint.
3. Push clamp handle down to vertical position to secure the rear latch; make sure side Q-seal of the cover is compressed and clamps are snug.



**NOTE:** Clamp must make solid contact with the metal bed rail lip for the cover to be secure. (See Fig 1- 3 in Safety Notes)

After rear clamps have been latched securely, close/lock tailgate and cover cannot be opened from the outside.

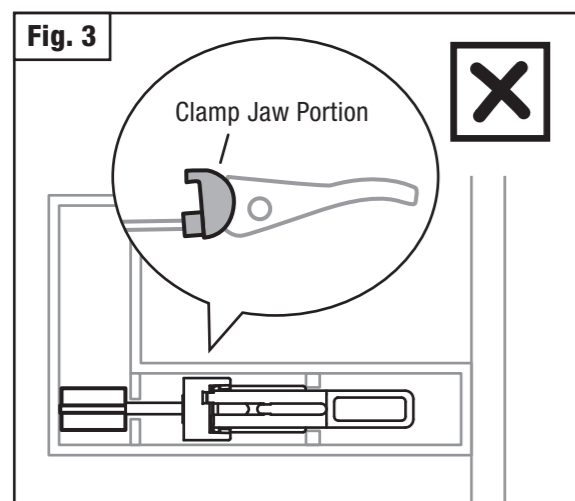
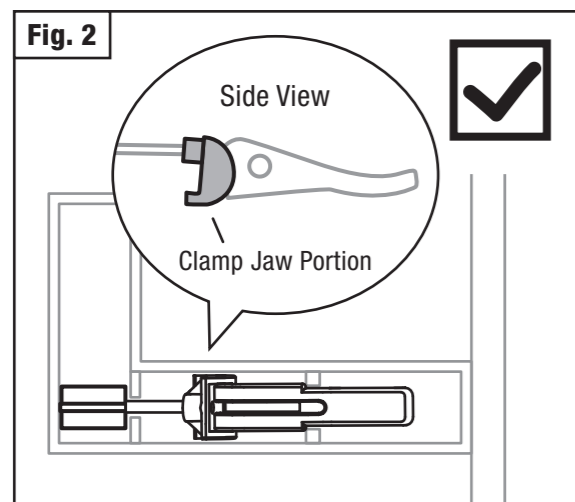
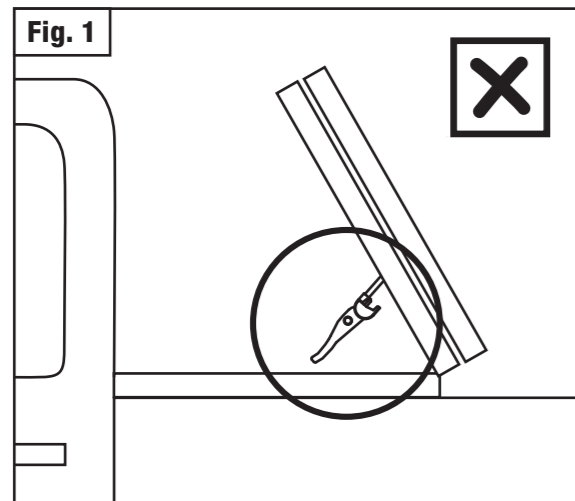
**NOTE:** Cover may not completely cover to the outside edge of the bed rails due to slight difference in truck bed shape for different year models.

## STEP 5

### Folding Up the Cover

Open tailgate and release rear clamps on both sides. Remove any foreign matter on the cover and stow rear clamps into adjacent channels before folding up the cover. Secure both safety buckles at the cab when cover is folded all the way.

When folding up the cover, rear clamps must be stowed away into the adjacent channels with the clamp jaw portion facing down as shown in Fig.2. Otherwise latch handles may puncture cover and void warranty. (Figs.1 & Fig.3)



## SAFETY NOTES

**Warranty will be voided if you fail to follow the notes below.**

- ▶ Check and secure all clamps before driving.
- ▶ DO NOT drive with cover folded open and safety straps unbuckled.
- ▶ DO NOT overload cargo or place sharp objects in contact with cover.
- ▶ Maximum weight capacity of the cover is 300lbs, weight must be evenly distributed.
- ▶ Safety clamps provide additional security, but they do not replace front clamps. Front clamps must be securely attached.
- ▶ If the truck is equipped with Over-the-Bedrail bed liner (Fig.4) or bed side rail cap with plastic lip lower than factory metal bed lip (Fig.5), small holes of about 2" x 4" will need to be cut on the plastic liners so the clamps can be fastened securely to the metal part of the truck bed lips (Fig.6).

