

# TYC™

## CABIN AIR FILTER

- ▶ Cleaner Air for Passengers
- ▶ Enhanced HVAC Performance
- ▶ Easy Installation, Perfect Fit

### TYC #: 800127C2

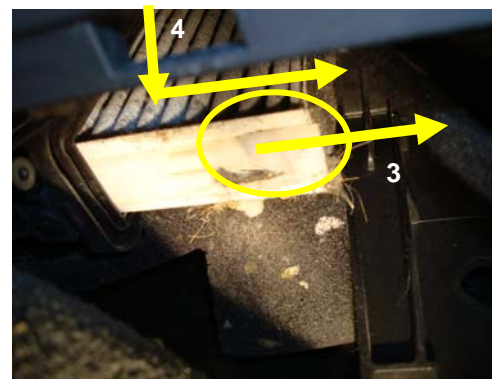
Replacement for OEM  
4F0 819 439 A (Old )  
4F0 898 438 B (New)

Estimated Time : 10 min.

### 05-10Audi A6 / S6



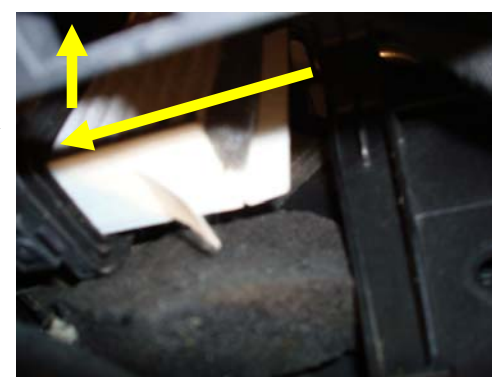
1. The filter is located behind the glove compartment and can be accessed under the glove compartment. Identify the small piece of black plastic cover, remove it by pulling the entire piece downwards. Set plastic cover aside.



3. The filters are stacked on top of each other. Remove the first of two filters by grabbing onto the nylon strip, and slide it to the right.  
4. Remove second filter by reaching up and pulling it down, and then out to the right like the first filter.



2. The filter access door is located at the upper right corner. Reach in and pull on the locking tab, then pull it to the right to remove. Set filter access door aside.



5. Install the first of two new TYC filters by sliding it in to the left, then pushing it up into the housing. Install second filter by sliding it to the left. Ensure that for both filters, the air flow arrow is pointing to the inside of the vehicle.

6. Reinstall in reverse order.

Installation guide pictures are from the **BOLD** vehicle model.