

# INSTALLATION INSTRUCTIONS

2016+ Toyota Tacoma Console Insert #324

## PARTS CHECKLIST



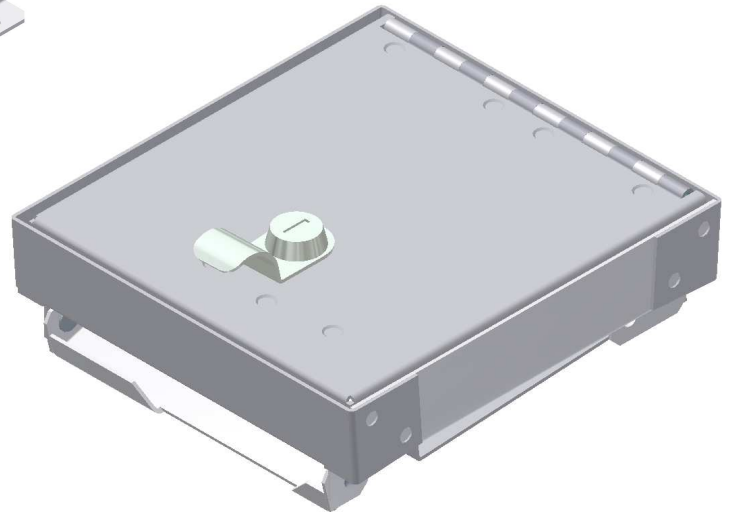
#8 Right Plate



#9 Left Plate



#10 (2) Bottom Plate



Console Insert #324

## SHIPPING PACKAGE CONTENTS

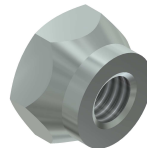
(Included With Keys)



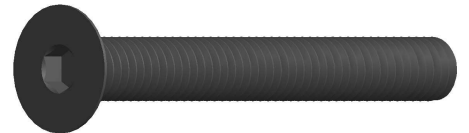
#12.1 (4)  
#10-32 x 3/8" Screw



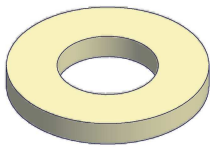
#12.2 (4)  
#10-32 x 3/16" Screw



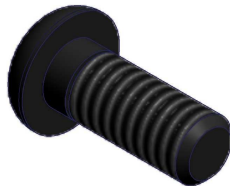
#12.6 (4)  
#10-32 Nylock Nut



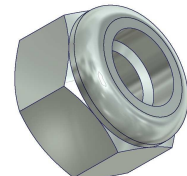
#12.7 (2)  
M6 x 50mm(2") Cap Screw



#14.3 (2)  
1/4" Nylon Washer



#14.4  
1/4"-20x5/8" Cap Screw



#14.5  
1/4"-20 Nylock Nut

### Tools needed for standard installation:

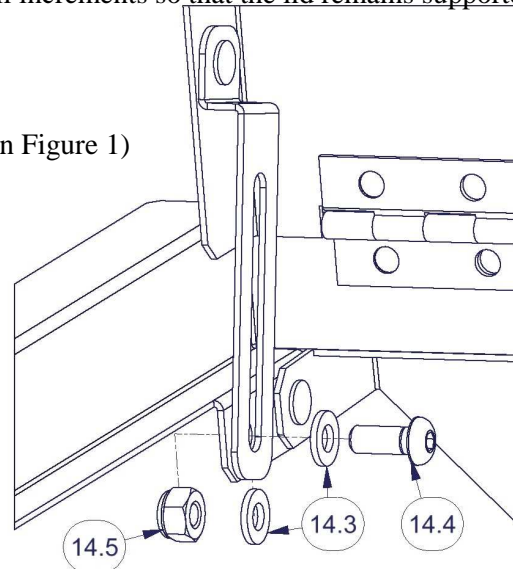
•Phillips Head Screwdriver    •10mm Socket/Ratchet    •5/32" Hex Wrench    •3/8" End Wrench    •7/16" End Wrench

**PLEASE READ ALL INSTRUCTIONS THOROUGHLY BEFORE STARTING INSTALLATION.**

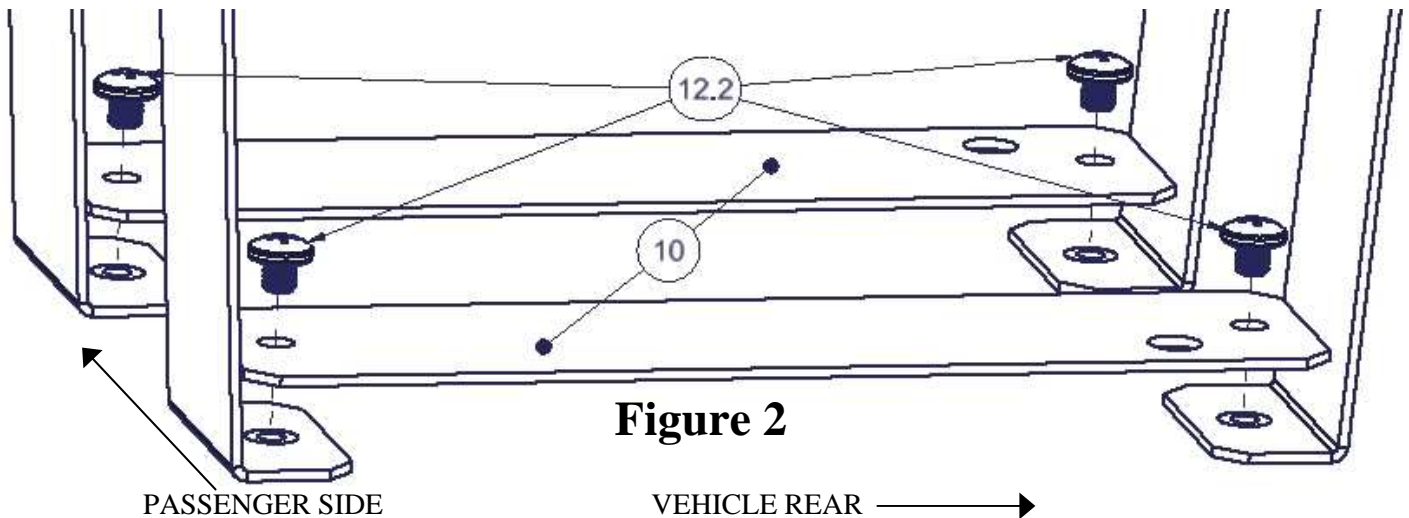
1. Remove all contents from the shipping box and confirm that you have all of the components listed on Page 1.
2. Extend the front and rear legs of the Console Insert and rest on a flat surface, open the lid and assemble the lid support hardware as shown in Figure 1. Tighten the hardware in small increments so that the lid remains supported as you prefer (normally self-supporting at 45 degree lid angle).

NOTE: Second nylon washer (#14.3 shown below assembly in Figure 1) slips between moving slotted part, and stationary body.

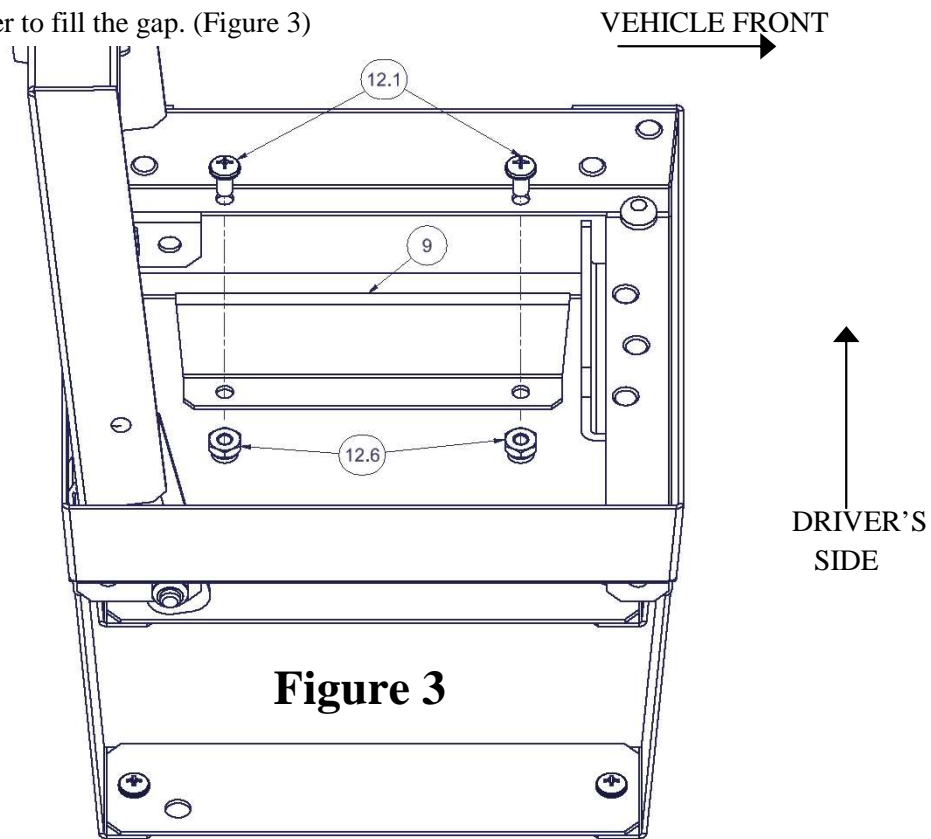
**Figure 1**



3. Open the factory console lid and remove all contents (including the pad in the bottom of the OEM console).
4. Remove the factory console mounting bolts from the bottom of the console, and safely store if you wish to return the vehicle to stock configuration in the future.
5. Return the Console Insert to the folded position (lid support will now extend below the folded legs), and lower the Insert into the console with the lock facing up and forward. NOTE: It may be necessary to tip the passenger side of the insert(side with lid support) down slightly while inserting.
6. Open the Console Insert lid, spread the legs, and loosely install the #10 Bottom Plates using (4) of the #12.2 (short) Machine Screws, as seen in Figure 2. The larger holes in the plates should be oriented to the rear and outer edges (as shown). NOTE: It may be necessary to spread the legs slightly to start the second screw in each plate.

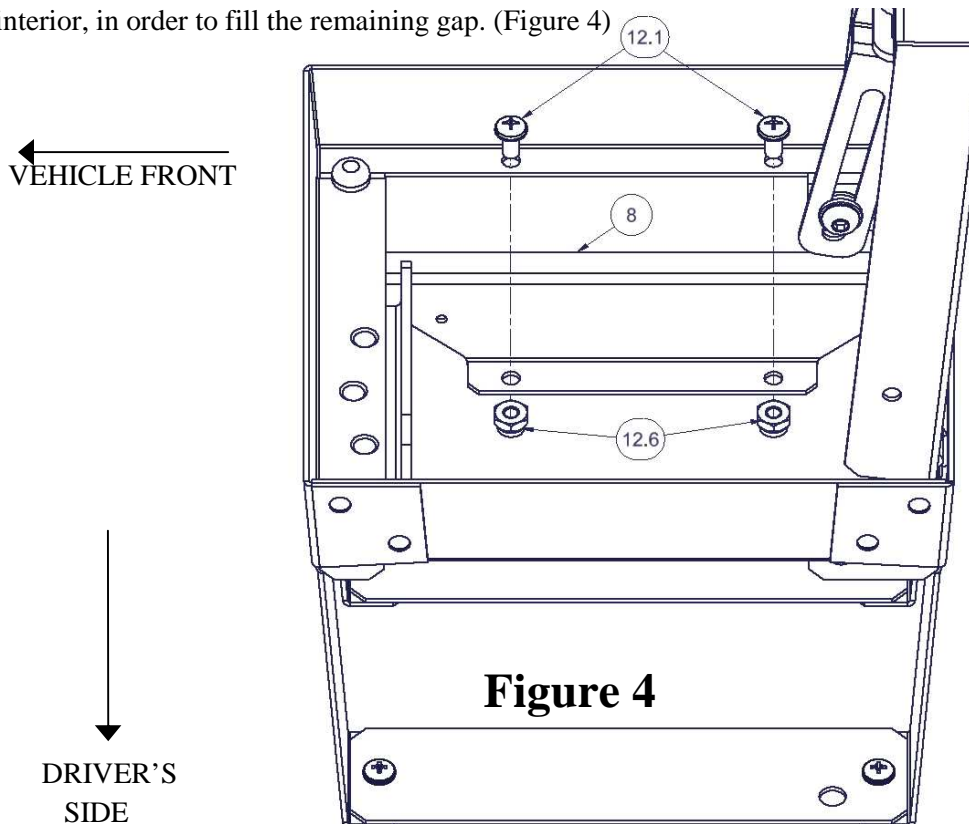


7. Push the Console Insert as far to the passenger side of the vehicle as possible, and install the #9 Left Plate using (2) #12.1 Machine Screws and #12.6 Nylock Nuts. The upper flange will slip between the upper collar of the Insert and the console interior in order to fill the gap. (Figure 3)



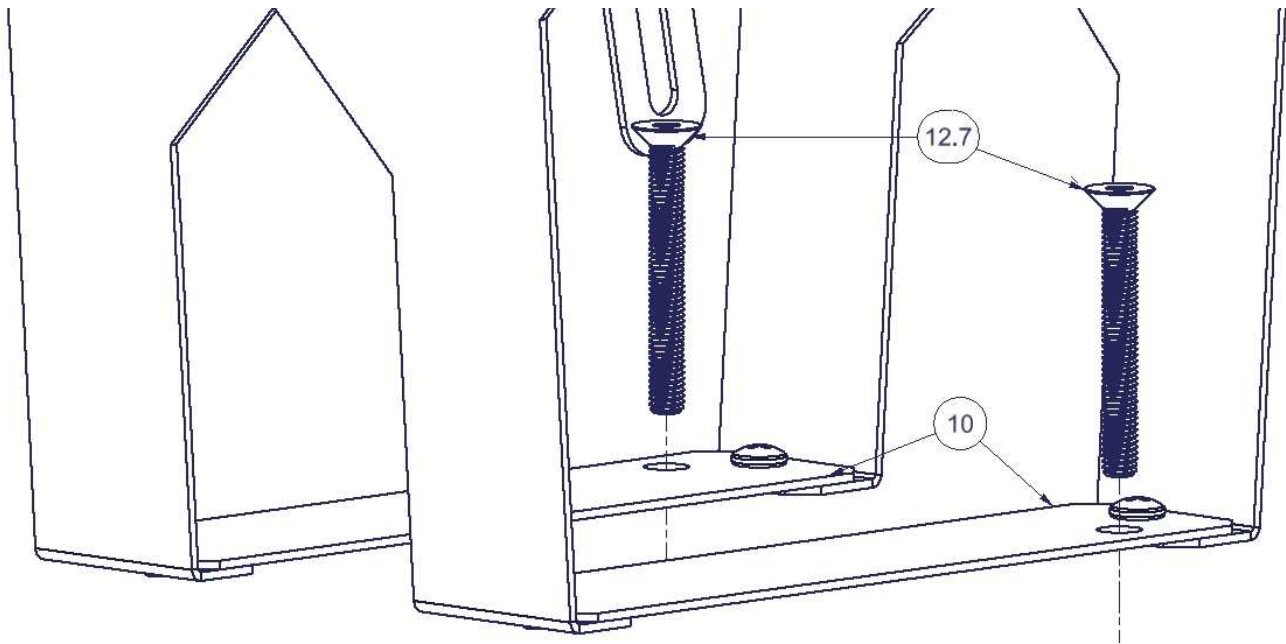
**Figure 3**

8. Push the Insert as far to the driver's side of the vehicle as possible, and install the #8 Right Plate using (2) #12.1 Machine Screws and #12.6 Nylock Nuts. The upper flange will slip between the upper collar of the Insert and the console interior, in order to fill the remaining gap. (Figure 4)



**Figure 4**

9. Install the (2) #12.7 Mounting Bolts through the #10 Bottom Plates to secure the Console Insert into the console. (Figure 5)



**Figure 5**

10. Tighten all of the hardware inside the Console Insert. The bottom of the #10 Bottom Plates should be flush with the bottom of the console. Do not overtighten.
11. Replace contents of console, the pad removed in Step 3 will cover the bottom plates and their associated hardware. The factory coin tray may be utilized or removed depending on your preference.

NOTE: Over time the friction that holds the lid in the open position may be reduced due to normal wear. To increase the friction it is necessary to tighten the assembly. Tighten in small increments and test by opening/closing the lid until you have reached your preferred tension.