



INSTALLATION INSTRUCTIONS

2015+ F150 [Flow-Thru Console Insert #317](#)

PARTS CHECKLIST



#10 Front Plate



#9 Rear Plate



#11 (2) Bottom Plate



Console Insert #317

SHIPPING PACKAGE CONTENTS

(Included With Keys)



#14.1 (4)
#10-32 x 3/8" Screw



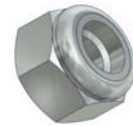
#14.2 (4)
#10-32 x 3/16" Screw



#14.3 (2)
1/4" Nylon Washer



#14.4
1/4"-20x5/8" Cap Screw



#14.5
1/4"-20 Nylock Nut

Tools needed for standard installation:

•Phillips Head Screwdriver

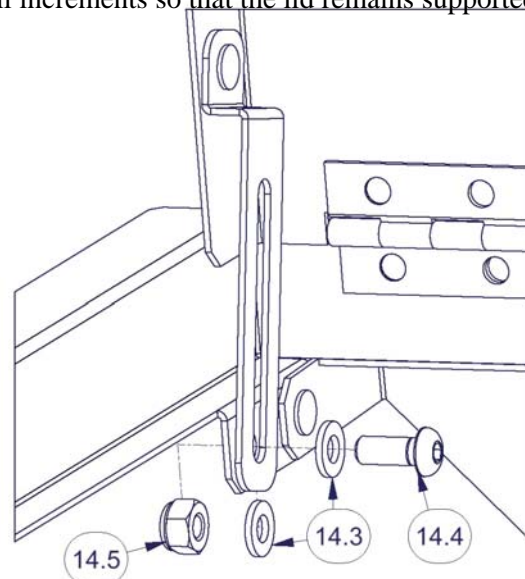
•5/32" Hex Wrench

•7/16" End Wrench

PLEASE READ ALL INSTRUCTIONS THOROUGHLY BEFORE STARTING INSTALLATION.

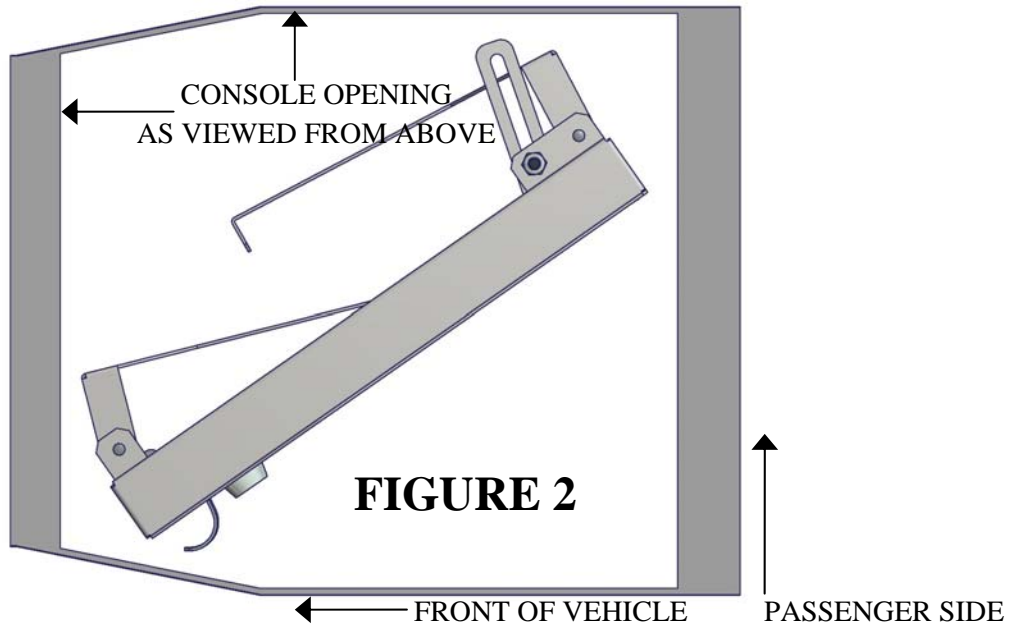
1. Remove all contents from the shipping box and confirm that you have all of the components listed above.
2. Extend the front and rear legs of the Insert and rest on a flat surface, open the lid and assemble the lid support hardware as shown in Figure 1. Tighten the hardware in small increments so that the lid remains supported as you require.

Figure 1



3. Open the factory console lid and remove all contents (including the pad in the bottom of the console).

4. Place the Console Insert into the console on edge diagonally, with the upper surface of the Insert facing the driver side and the lock/finger pull to the front of the vehicle. *Figure 2 shows the outline of the console opening and proper orientation.*



The Insert will need to rotate while being placed so that the lid/logo faces up. The fit is quite tight and may require a second effort at a slightly different angle. The Console Insert should now be resting on the bottom of the console with the logo facing up.

5. Open the Insert Lid and install the #9 Rear Plate using (2) of the #14.1 Machine Screws. It is generally easier to align the holes in both components when the front of the Insert is elevated. See Figure 3
6. Return the Insert to rest on the bottom of the console, pushed as far to the back as possible, and install the #10 front plate using the remaining (2) #14.1 Machine Screws. The flange that holds the press-in nuts will slip between the main collar of the Insert and the folded forward leg. See Figure 4

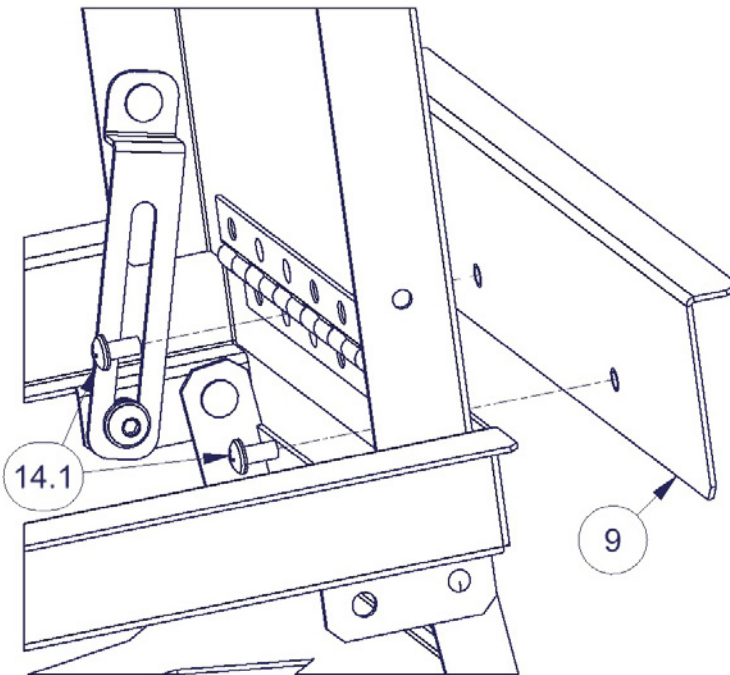


Figure 3

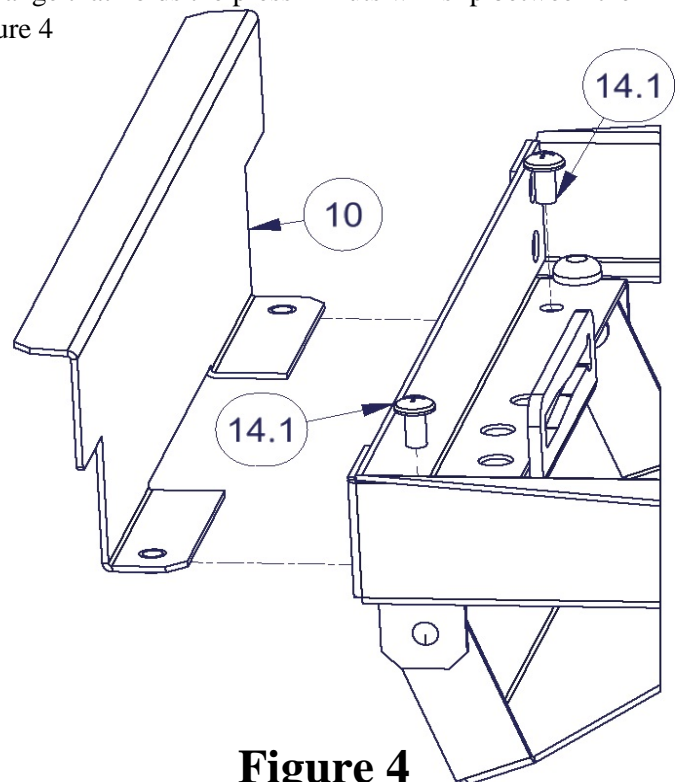
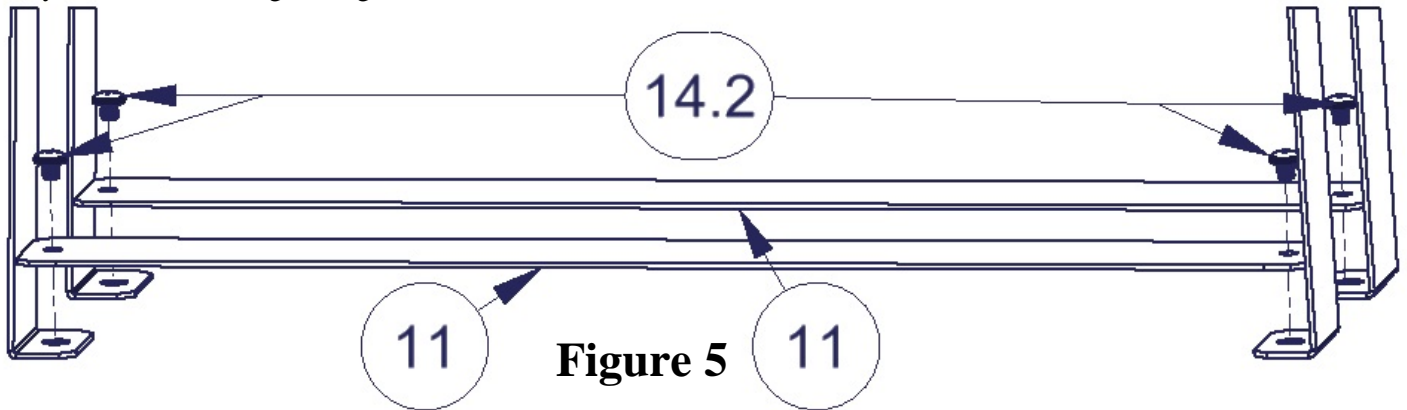


Figure 4

7. With the lid open, lift the main body of the insert and push the legs out against the interior of the console.
8. Insert the (2) #11 Bottom Plates into the bottom of the console and install them using (4) #14.2 Machine Screws(short), as shown in Figure 5. Due to the angle of the Insert legs, it is easiest to start the #14.2 Machine Screws by hand and finish tightening them with a screwdriver.



9. Replace contents of console, the pad removed in Step 3 will cover the bottom plates and their associated hardware. The factory coin tray may be utilized or removed depending on your preference.

NOTE: Over time the friction that holds the lid in the open position may be reduced. To increase the friction it is necessary to tighten the assembly. Tighten in small increments and test by opening/closing the lid.