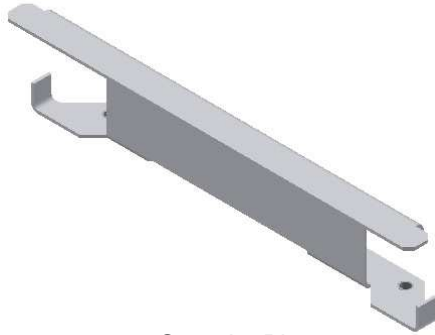




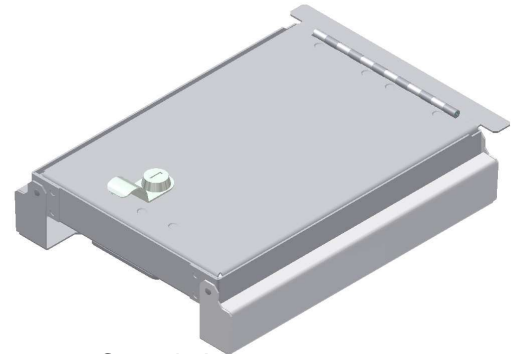
INSTALLATION INSTRUCTIONS

2009-2014 F150 [Flow-Thru Console Insert #315](#)



Security Plate

PARTS CHECKLIST



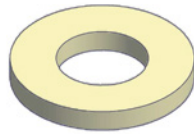
Console Insert #315

SHIPPING PACKAGE CONTENTS

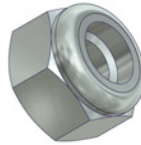
(Included With Keys)



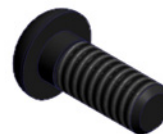
#9.1 (2) #10-32 Screw



#9.2 (2) 1/4" Nylon Washer



#9.3 1/4" Nylock Nut



#9.4 1/4" Cap Screw



#9.5 1/4" Steel Washer

Tools needed for standard installation:

- Phillips Head Screwdriver
- 5/32" Hex Wrench
- 7/16" Wrench

PLEASE READ ALL INSTRUCTIONS THOROUGHLY BEFORE STARTING INSTALLATION.

IMPORTANT: THE UNIT CANNOT BE EXPANDED UNTIL THE LID IS UNLOCKED AND OPENED, OR DAMAGE TO THE LID/LEGS MAY RESULT.

1. Open the factory console lid and remove all contents (including the carpet in the bottom of the console).
2. Unlock the #315 lid, spread the legs, and remove the plastic backing from the anti-rattle tape at the bottom of the legs.

3. Stow the legs, and begin by placing the Console Insert into the console on edge diagonally, with the upper surface of the Insert facing the driver side and the lock/finger pull to the front of the vehicle.

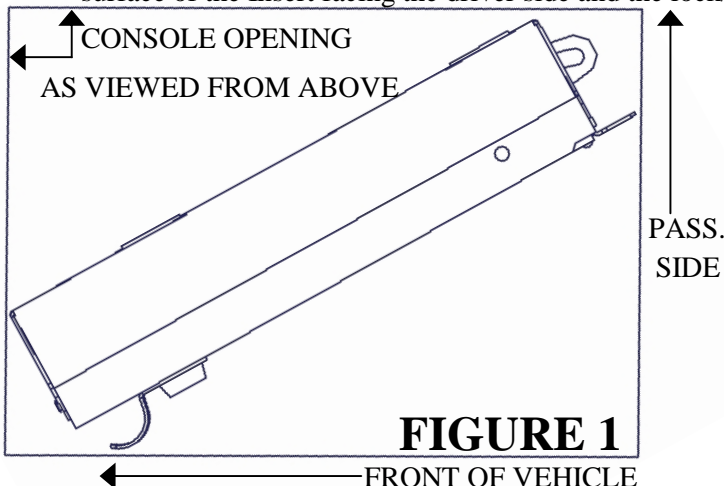
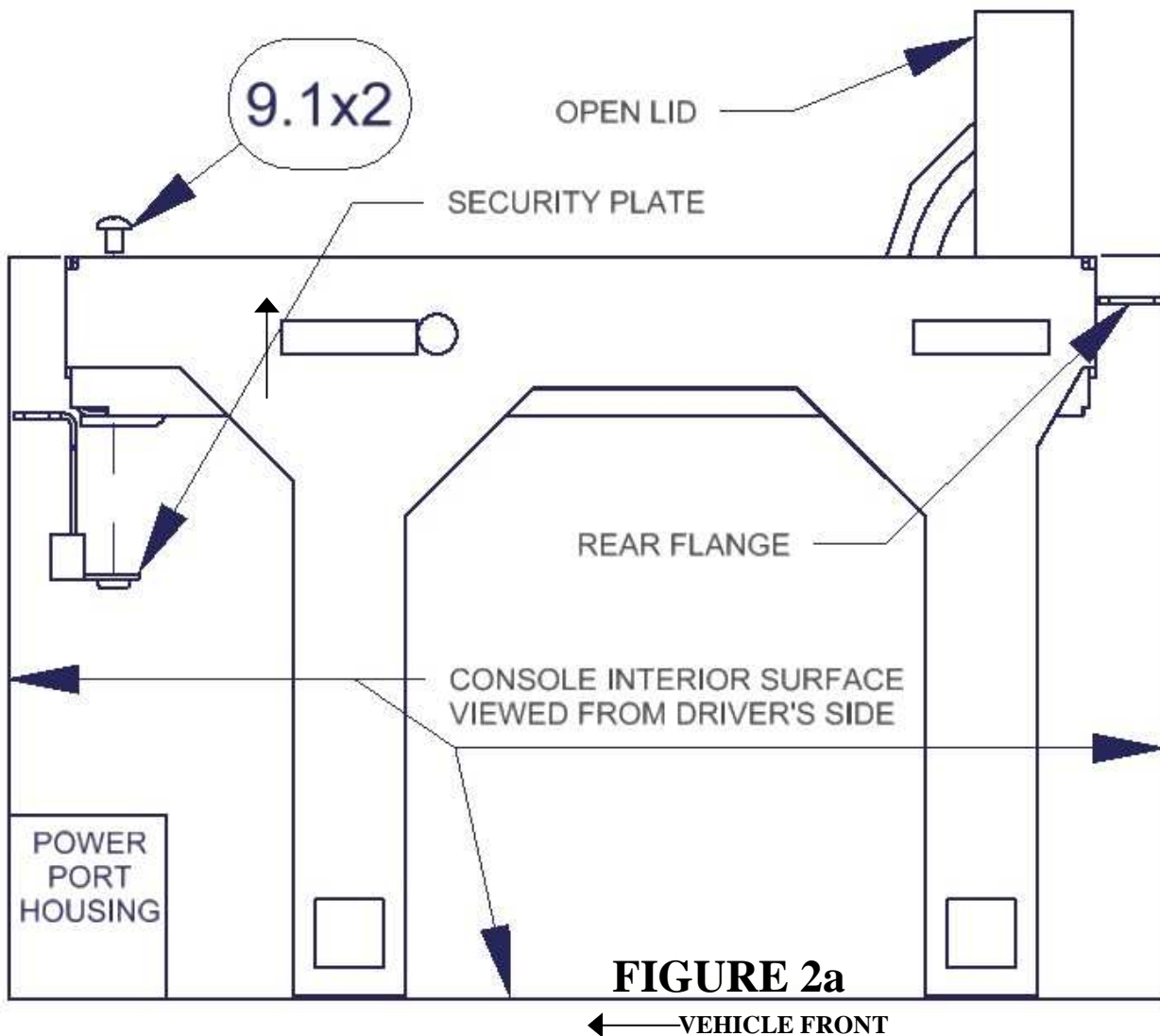


Figure 1 shows the outline of the console opening and proper orientation for placement.

FIGURE 1

4. The Insert will need to rotate while being placed so that the lid/logo faces up. The fit is quite tight and may require a second effort at a slightly different angle. The Console Insert should now be resting on the plastic Power Port/USB Housing in the front, and the bottom of the console in the rear with the logo facing up.
- 4a. For models with the USB/Card Reader housing that rises above the Power Port, the Security Plate needs to be positioned on top of the housing at this time(See Figure 2a for Orientation). Do this by lifting the front of the Insert.
5. Unlock and open the Insert lid.
6. Lift the Insert off the bottom of the console, and rotate both legs so that they rest on the small ledges on either side of the factory console.
7. Push the insert to the rear of the console so that the rear flange of the Insert contacts the back side of the console, and push the legs out against the interior of the console to adhere the foam tape.
8. Slide the Security Plate into position in front of the Insert from below. By design the fit is tight, and a screwdriver may be used to pry the insert to the rear of the console to ease installation of the Security Plate.



9. Align the holes in the Security Plate with those in the Insert (See Figures 2a, 2b), insert and tighten the 2) #9.1 screws.

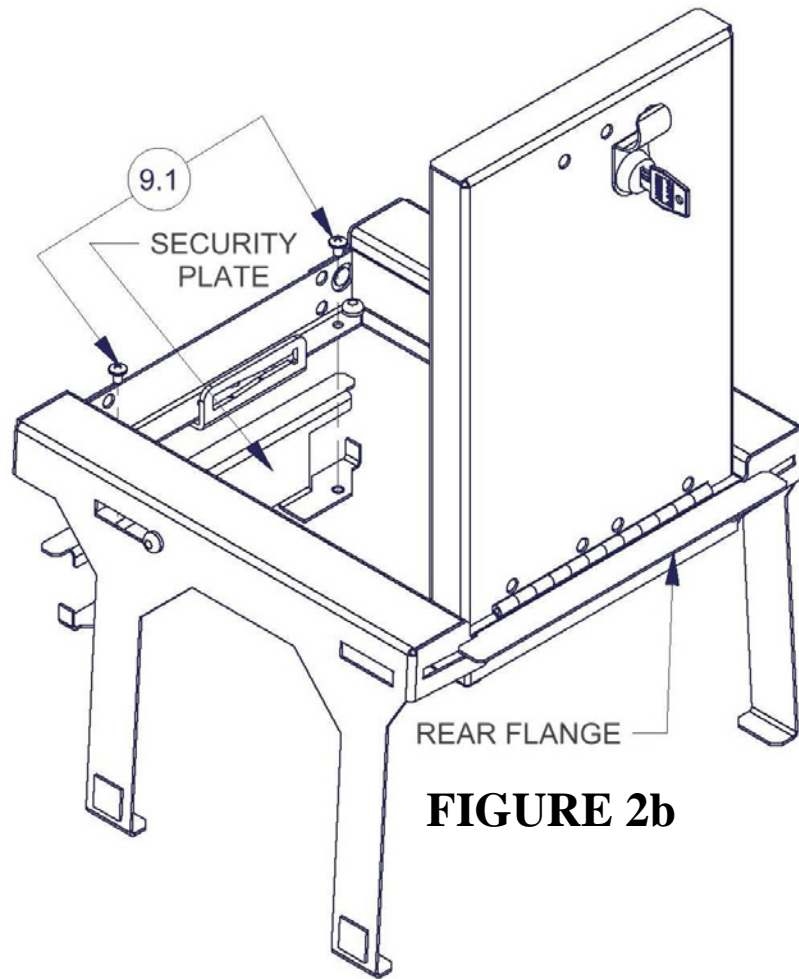


FIGURE 2b

10. Assemble the lid support hardware, as shown in Figure 3. Tighten the hardware in small increments so that the lid remains supported as you require (usually self-supporting at a 45 degree lid angle).

NOTE: Second nylon washer, and steel washer (#9.2, and 9.5 shown below assembly in Figure 3) slip between moving slotted part, and stationary body.

NOTE: Over time the friction that holds the lid in the open position may be reduced as a result of use, and it may become necessary to tighten the assembly. Tighten in small increments and test by opening/closing the lid.

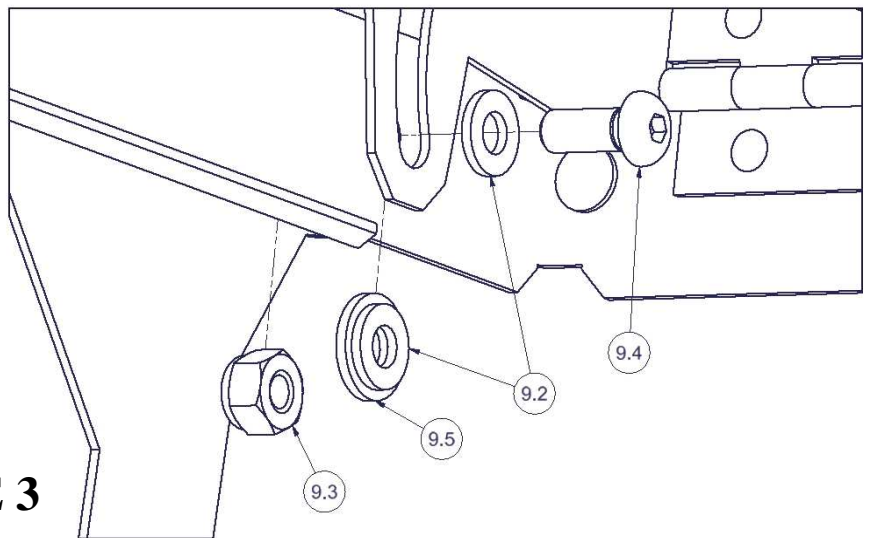


FIGURE 3

11. Replace contents of console, starting with the carpet that rests on the bottom of the console (Removed in Step #1).