

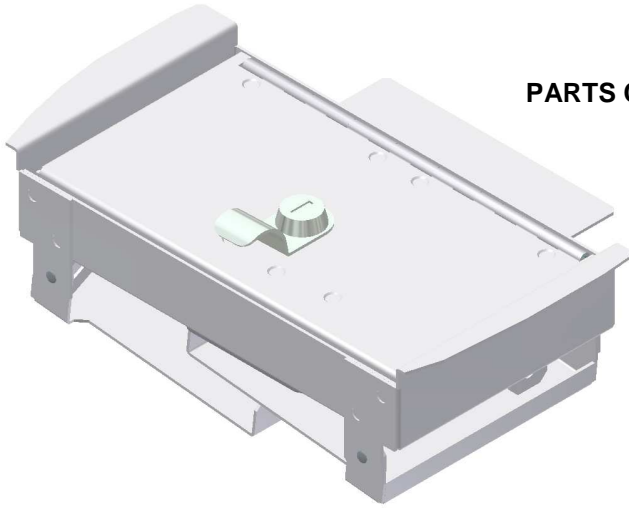


INSTALLATION INSTRUCTIONS

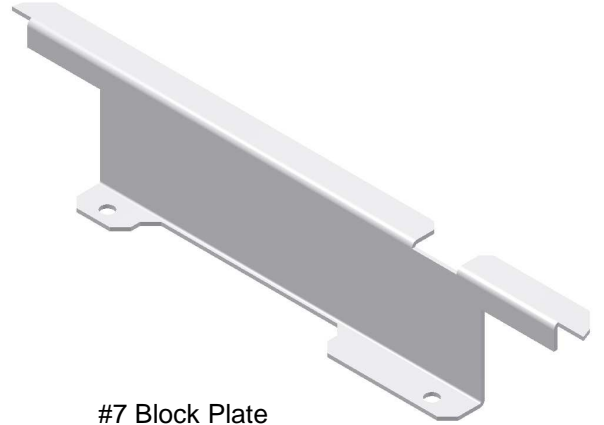
2005-2015 Toyota Tacoma Console Insert #314

Fits Trucks with Bucket Seats

PARTS CHECKLIST



Console Insert #314



#7 Block Plate



#11.5 (11") DoorGuard Trim



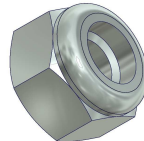
#8 (2) Bottom Plate

SHIPPING PACKAGE CONTENTS

(Included In Key Bag)



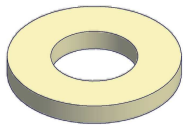
#11.1 (4)
#10-32 x 3/16" Screw



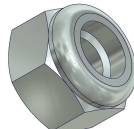
#11.2 (1)
1/4"-20 Nylock Nut



#11.3 (1)
1/4"-20x5/8" Cap Screw



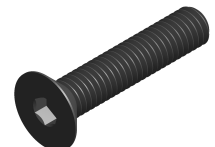
#11.4 (2)
1/4" Nylon Washer



#11.6 (2)
#10-32 Nylock Nut



#11.7 (2)
#10-32 x 3/8" Screw



#11.8 (2)
6mm x 30mm Screw

Tools needed for standard installation:

•Phillips Head Screwdriver

•3/8" End Wrench

•5/32" Hex Wrench

•7/16" End Wrench

•10mm Socket

PLEASE READ ALL INSTRUCTIONS THOROUGHLY BEFORE STARTING INSTALLATION.

1. Remove all contents from the shipping box and confirm that you have all of the components listed on Page 1.
2. Remove the contents of the factory console, including the bottom mat.
3. Install the #11.5 DoorGuard Trim to both sides of the insert by applying it to one side, trimming to length(as shown in Figure 1), applying the remainder to the other side, and trimming to final length. NOTE: Some extra material (approx. ½") has been provided, but not enough to make a third piece, so care should be taken.

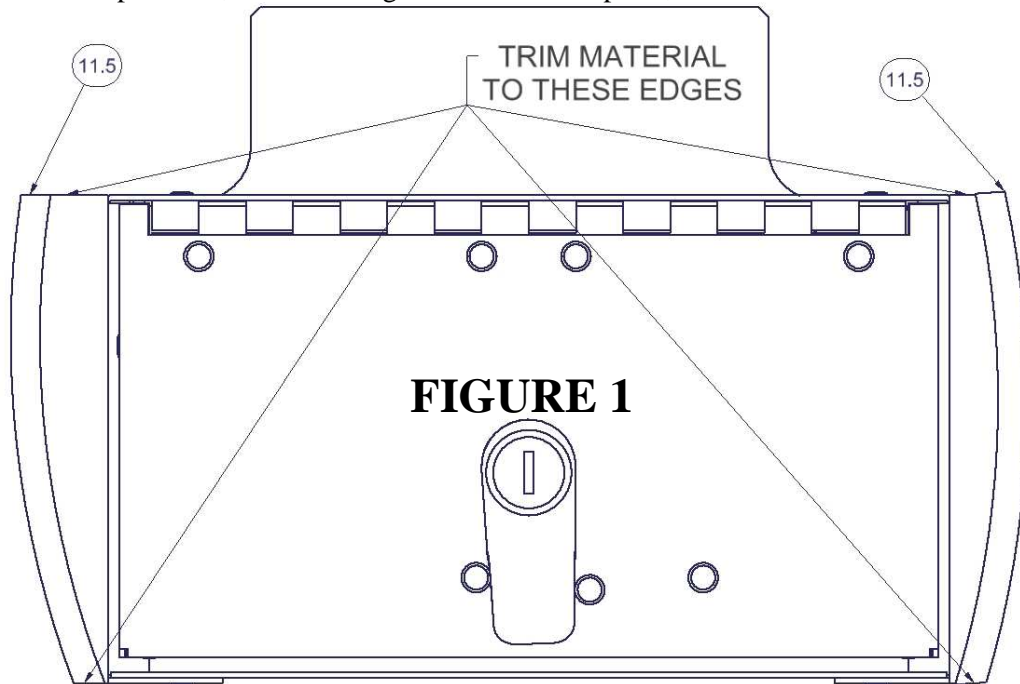
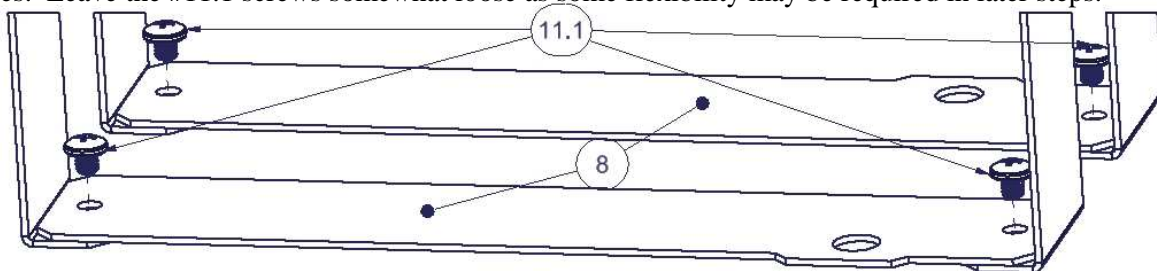


FIGURE 1

4. Remove the foam wrap that protected the legs from scratches during shipment and return to the folded position.
5. Insert the 314 Console Insert into the open console by angling the narrow tray area down and under the hinge area of the factory console. Once the passenger side is in place, the driver's side may be lowered. NOTE: Some outward pressure on the upper lip of the console may be necessary to provide clearance for the pivot area of the legs.
6. Unlock and open the lid of the Console Insert, and expand the legs to the fully open position.
7. Remove the (2) factory installed console mounting bolts from the bottom of the console.
8. Attach the #8 Bottom Plates to the assembly using (4) #11.1 Screws, as shown in Figure 2 with the holes biased to the outer edges. Leave the #11.1 screws somewhat loose as some flexibility may be required in later steps.



Vehicle Front **FIGURE 2**

9. Assemble the lid support hardware, as shown in Figure 3. Tighten the hardware in small increments so that the lid remains supported as you require (usually self-supporting at a 45 degree lid angle).

NOTE: Second nylon washer (#11.4 shown below assembly in Figure 3) slips between moving slotted part, and stationary body.

NOTE: Over time the friction that holds the lid in the open position may be reduced as a result of use, and it may become necessary to tighten the assembly. Tighten in small increments and test by opening/closing the lid.

NOTE: Due to the limited space within the console, it is easiest to use a hex-driver and the open end of a wrench to tighten the assembly.

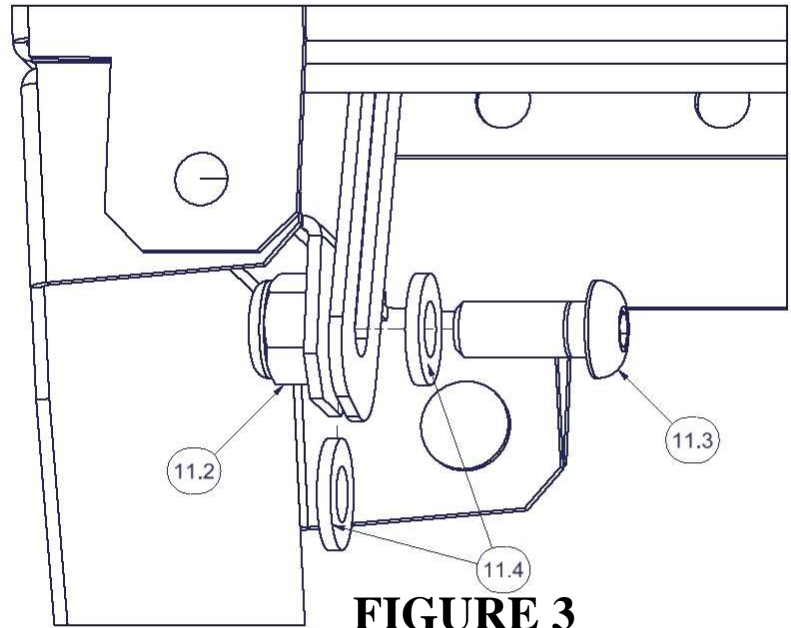


FIGURE 3

10. Loosely install the 2) #11.8 Flathead Screws through the holes in the #8 Bottom Plates into the body of the vehicle.
11. Position the #7 Block Plate toward the driver's side of the insert from below/inside the console. Start by angling the rear of the plate upward between the Insert and the driver's side wall of the console. Then rotate the plate up so that the notch in the forward portion of the plate seats around the latch area of the console. Reference Figure 4a.

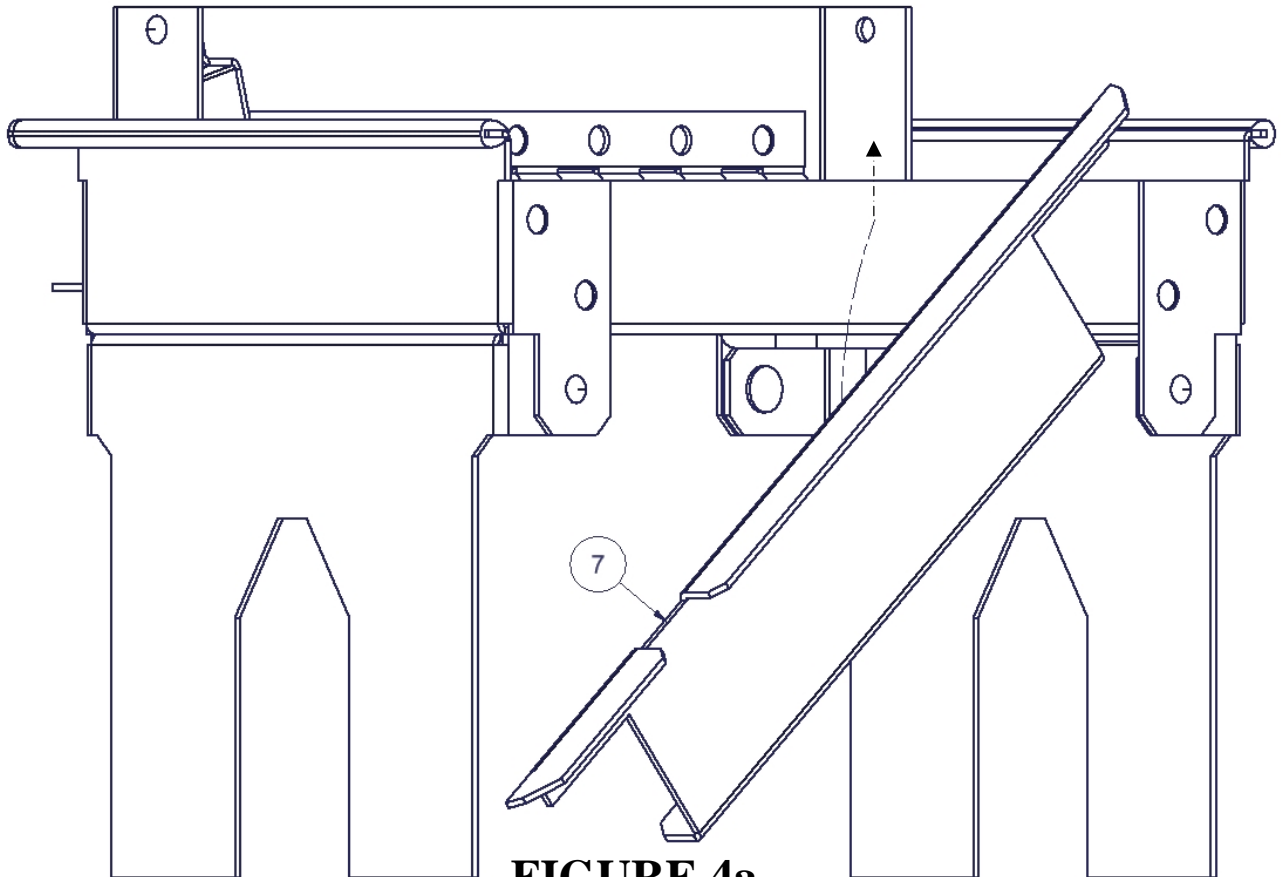


FIGURE 4a

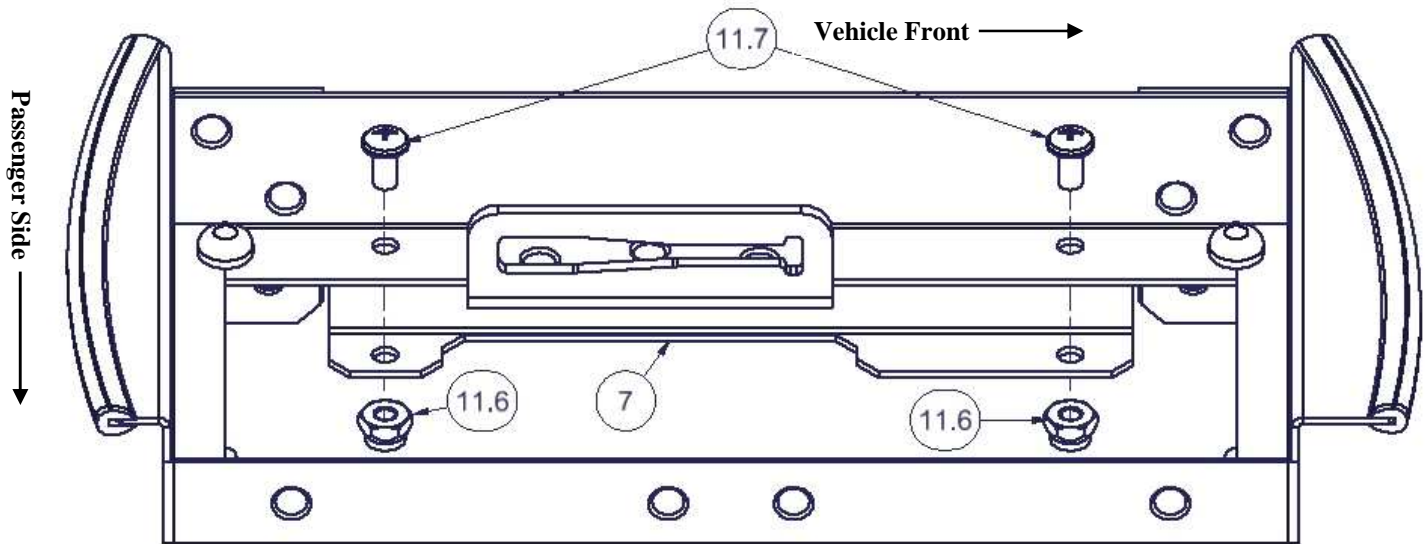


FIGURE 4b

(LID REMOVED FOR CLARITY)

12. Secure the #7 Plate to the assembly using 2) #11.7 screws, and 2) #11.6 Nuts. (See Figure 4b)
13. Tighten the screws that were left loose in Steps #8 and #10, starting with the #11.8 mounting screws.
14. Because the legs do not extend to the front and rear edges of the console, the factory mat will no longer fit in the bottom of the console. You may wish to trim the factory mat to fit within the legs of the Insert, or make a new mat using carpet or another material. Use the dimensions below and the factory mat as a template to make the modifications, or for making your own mat. Note that the new mat is not symmetric.

