

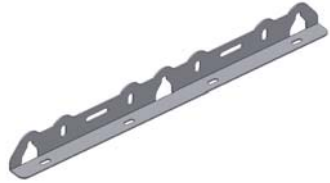


INSTALLATION INSTRUCTIONS

TIE DOWN RAILS (27 ¼" LONG) #158

Please read and fill out the enclosed warranty registration card to activate your warranty.

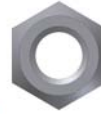
PARTS CHECKLIST



#1 - (2) Tie Down Rails



#2.3 - (8) 5/16-18 x 7/8" BOLT



#2.1 - (8) 5/16 NUTS



#2.2 - (16) 5/16" WASHERS

TOOLS NEEDED

- Electric drill
- 3/8" Drill bit
- Marker or pencil
- Silicone sealant (Recommended)
- ½" Socket and ratchet
- ½" Wrench

PLEASE READ ALL INSTRUCTIONS THOROUGHLY BEFORE STARTING INSTALLATION.

1. Choose a strong surface for mounting the rails then mark and drill the holes and fasten them with the illustrated hardware.

