



Installation Manual

2018 Jeep Wrangler JL 2" Suspension Lift Kit

Part # 42105

SS02072018

Part # 42105
2018 Jeep Wrangler JL 2" suspension lift kit

<i>Part #</i>	<i>Description</i>	<i>Qty.</i>
42105-01	Rear coil spacer	2
42105-02	Front coil spacer	2
S10325	Shock alignment sleeve	8
13086INST	Instruction Manual	1

Congratulations on your selection to purchase a Tuff Country EZ-Ride Suspension System. We at Tuff Country EZ-Ride Suspension are proud to offer a high quality product at the industries most competitive pricing. Thank you for your confidence in us and our product.

The Tuff Country EZ-Ride Suspension product safety label that is included in your kit box must be installed inside the cab in plain view of all occupants.

For a list of parts, please refer to the back of the installation manual for photos of parts that are included in this suspension system.

Make sure to use thread locker or loctite on all new and stock hardware associated with the installation of this suspension system.

After the completion of the installation, a front end alignment is required.

Important customer information:

Tuff Country EZ-Ride Suspension highly recommends that a qualified or a certified mechanic performs this installation.

It is the responsibility of the customer/installer to wear safety glasses at all times when performing this installation.

It is the customers/installers responsibility to read and understand all steps before installation begins. Also, the OEM manual should be used as a reference guide.

This vehicles reaction and handling characteristics may differ from standard cars and/or trucks. Modifications to improve and/or enhance off road performance may raise the intended center of gravity. Extreme caution must be utilized when encountering driving conditions which may cause vehicle imbalance or loss of control. **DRIVE SAFELY!** Avoid abrupt maneuvers: such as sudden sharp turns which could cause a roll over, resulting in serious injury or death.

It is the customers responsibility to make sure that a re-torque is performed on all hardware associated with this suspension system after the first 100 miles of installation. It is also the customers responsibility to do a complete re-torque after every 3000 miles or after every off road use.

After the original installation, Tuff Country EZ-Ride Suspension also recommends having the alignment checked every 6 months to ensure proper tracking, proper wear on tires and front end components. Tuff Country EZ-Ride Suspension takes no responsibility for abuse, improper installation or improper suspension maintenance.

Limited lifetime warranty

Notice to all Tuff Country EZ-Ride Suspension customers: It is your responsibility to keep your original sales receipt! If failure should occur on any Tuff Country EZ-Ride Suspension component, your original sales receipt must accompany the warranted unit to receive warranty. Warranty will be void if the customer can not provide the original sales receipt. Do not install a body lift in conjunction with a suspension system. If a body lift is used in conjunction with any Tuff Country EZ-Ride Suspension product, your Tuff Country EZ-Ride Suspension WARRANTY WILL BE VOID. ("Tuff Country") suspension products are warranted to be free from defects in material and workmanship for life if purchased, installed and maintained on a non-commercial vehicle; otherwise, for a period of twelve (12) months, from the date of purchase and installation on a commercial vehicle, or twelve thousand (12,000) miles (which ever occurs first). Tuff Country does not warrant or make any representations concerning Tuff Country Products when not installed and used strictly in accordance with the manufacturer's instructions for such installation and operation and accordance with good installation and maintenance practices of the automotive industry. This warranty does not apply to the cosmetic finish of Tuff Country products nor to Tuff Country products which have been altered, improperly installed, maintained, used or repaired, or damaged by accident, negligence, misuse or racing. ("Racing is used in its broadest sense, and, for example, without regards to formalities in relation to prizes, competition, etc.) This warranty is void if the product is removed from the original vehicle and re-installed on that or any other vehicle. This warranty is exclusive and is in lieu of any implied warranty of merchantability, fitness for a particular purpose or other warranty of quality, whether express or implied, except the warranty of title. All implied warranties are limited to the duration of this warranty. The remedies set forth in this warranty are exclusive. This warranty excludes all labor charges or other incidental or consequential damages. Any part or product returned for warranty claim must be returned through the dealer of the distributor from whom it was purchased. Tuff Country reserves the right to examine all parts returned to it for warranty claim to determine whether or not any such part has failed because of defect in material or workmanship. The obligation of Tuff Country under this warranty shall be limited to repairing, replacing or crediting, at its option, any part or product found to be so defective. Regardless of whether any part is repaired, replaced or credited under this warranty, shipping and/or transportation charges on the return of such product must be prepaid by the customer under this warranty.

Important information that needs to be read before installation begins:

Tuff Country recommends a 35"x12.50" tire once part #42105 has been installed. 37" tires can be installed with possible modification required. The OEM tires and wheels can be used in conjunction with this lift kit. If a wider tire is installed on the stock wheel, contact with suspension components may occur. Due to different types of tread patterns, some aggressive tires in this size recommendation may require slight trimming of inner fender plastic. **Our tire and wheel fitments are only a guideline. Different production times or tolerances will vary and this size should only be used as a starting point. Each vehicle is different and will need to be treated as such.**

The OEM shocks will not be long enough once this system has been installed. If you have not already ordered your new rear shocks, please contact Tuff Country or your local Tuff Country dealer and order your shocks.

Before installation begins, Tuff Country EZ-Ride Suspension highly recommends that the installer performs a test drive on the vehicle. During the test drive, check to see if there are any uncommon sounds or vibrations. If uncommon sounds or vibrations occur on the test drive, uncommon sounds or vibrations will be enhanced once the suspension system has been installed. Tuff Country EZ-Ride Suspension highly recommends notifying the customer prior to installation to inform the customer of these issues if they exist.

This Suspension kit comes with (1) installation manual and some post installation procedure literature and it is the installers responsibility to make sure that the customer receives the post installation procedure literature. Have them go to the customer care section to download these instructions.

Recommended tool selection:

- Jack stands
- Torque wrench
- Standard socket set
- Standard wrench set
- Metric socket set
- Metric wrench set
- Hydraulic floor jacks

Actual Parts may vary slightly from the parts in these photographs.

Please follow instructions carefully:

Before installation begins, measure from the center of the hub, to the bottom of the fender well, and record measurements below.

Pre-installation measurements:

Driver side front: _____

Passenger side front: _____

Driver side rear: _____

Passenger side rear: _____

At the end of the installation take the same measurements and compare to the pre-installation measurements.

Post installation measurements:

Driver side front: _____

Passenger side front: _____

Driver side rear: _____

Passenger side rear: _____

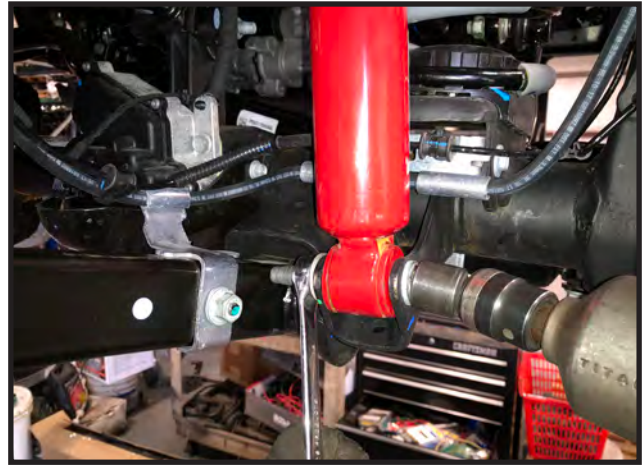
Front end installation:

1. To begin installation, block the rear tires of the vehicle so that the vehicle is stable and can't roll backwards. Safely lift the front of the vehicle and support both the driver and passenger side with jack stands. Remove the tires and wheels from both sides. Place a pair of hydraulic jacks on each side of the front axle.

2. Remove the track bar mounting hardware from the axle side bracket. Save the hardware for re-installation.



3. Working on both sides, remove the shocks from the vehicle and save the hardware for later installation.

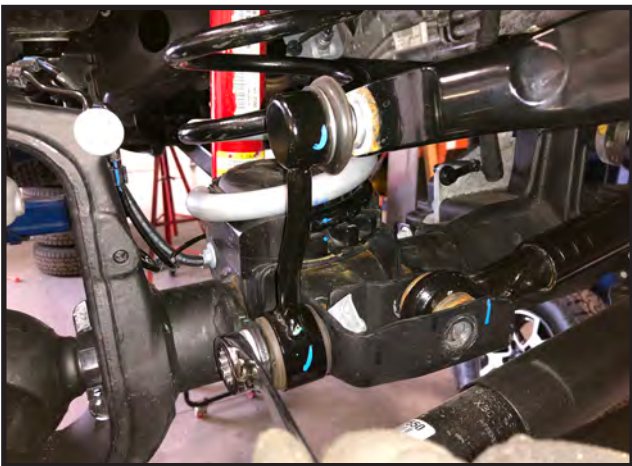


4. Working on both sides, remove the brakeline frame mounting bracket bolt and save bolts.





5. Working on both sides, remove the lower mounting hardware for the swaybar endlinks. Save the hardware.



6. Working on the driver side inner frame rail, just behind the steering gear box, locate and remove the plastic plugs holding the wire harness to the frame. This is done to gain slack in the wires during the install process.





7. Working on the passenger side upper control arm axle mount, locate and remove the plastic wire harness plug from the control arm to gain slack in the wire.



8. Carefully lower down on the hydraulic jacks so that the coil springs become loose and can be removed. Remove the front coil springs and set aside. **IMPORTANT: Be sure to remember what side of the vehicle the coils came off of, they will need to be re-installed on the SAME side as the came off.**



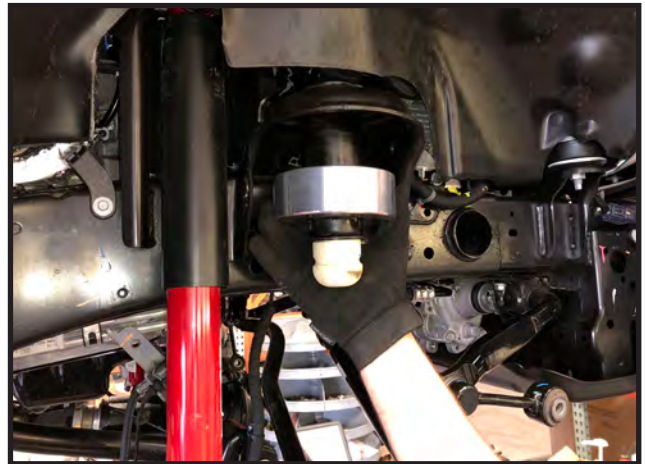
9. Working on both sides, remove the upper rubber coil spring isolator from the frame mount.



10. Locate and cut the rubber nipple off of both coil spring isolators.



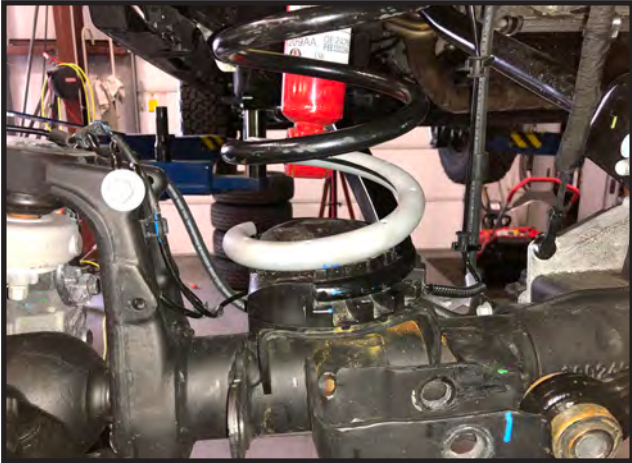
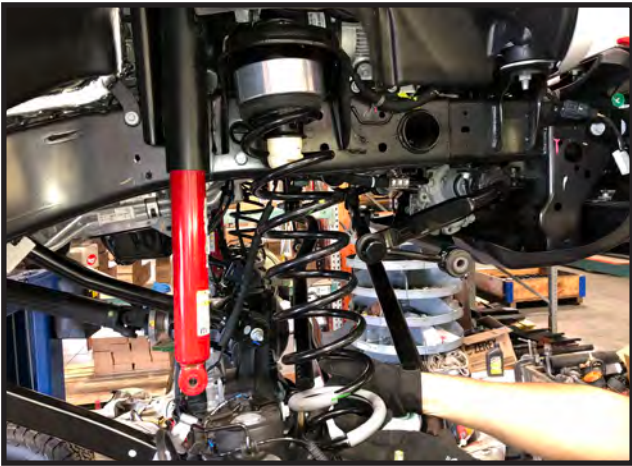
11. Locate the new front coil spacers part #42105-02, and install them into the front coil spring frame mounts.



12. Re-install the rubber coil spring isolators to the bottom of the new coil spring spacers.



13. Re-install the front coil springs making sure to install them on the same side they were removed from. Also make sure that the bottom of the coils are properly seated in the lower plastic mount so that the end of the coil wind is up against its stop.



14. Carefully raise up on the hydraulic floor jacks enough to start re-installing all of the previously removed components.

Tip: Place a jackstand or support device under the rear bumper before raising the front axle to help prevent the vehicle from lifting from the pressure of the coil springs.

15. Locate (4) S10325 shock sleeves and install them into the top eyelet of the shocks. Install the new shocks using the OE hardware.



16. Working on the driver side inner frame rail, re-install the plastic wire harness plugs into the original locations.

17. Working on the passenger side, re-install the plastic wire harness plug onto the upper control arm axle mount.

18. Working on both sides, re-install the brakeline frame mounts using the OE bolts.

Special note: The front track bar bolt will be difficult to install at this time, if possible, you may do so, otherwise we will install it at the end of this install when the vehicle is under its own weight on the ground.

Front installation complete, re-install the front tires and wheels and lower the vehicle back to the ground.

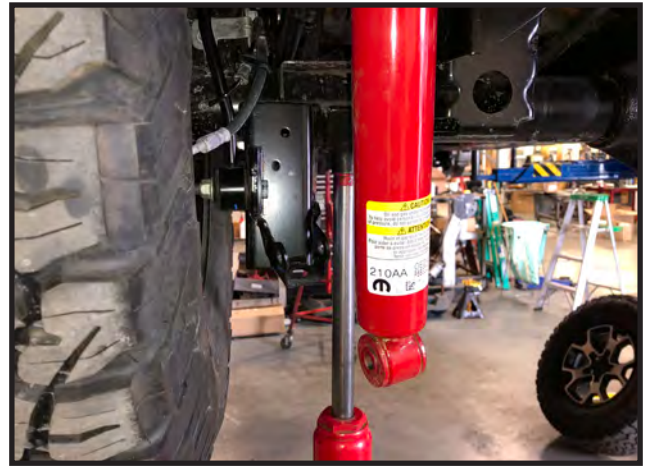
Rear Installation:

19. To begin installation, block the front tires of the vehicle so that the vehicle is stable and can't roll forward. Safely lift the rear of the vehicle and support both the driver and passenger side with jack stands. Remove the tires and wheels from both sides. Place a pair of hydraulic jacks on each side of the rear axle.

20. Working on the rear track bar axle mounting location, remove the hardware so the track bar can be free from the mount.



21. Working on both sides, remove the shocks and save the hardware



22. On both sides, remove the lower mounting hardware for the sway bar endlinks. Save the hardware.



23. Working on the passenger side, you can see the wire harness is attached to the axle breather hose in multiple locations. You will need to remove these attachment points to gain slack in the wire harness for this install process.





24. Lower down on both hydraulic jacks so that the coil springs can be free. Remove the coil springs and set aside. **Important: Make sure to remember which side of the vehicle the coils came off from, as they will need to be re-installed into the original locations later.**



25. Remove the lower plastic coil spring isolator from the axle perch. It may be necessary to pry it out of there.



26. Locate the new rear coil spacers part #42105-01. install the plastic coil isolators onto the new spacers making sure the nipple lines up to the machined hole in the new spacers.



27. Install the new coil spacers onto the axle perches of both sides of the vehicle.





28. Re-install the coils springs making sure to install them into the same location they were removed from.



29. Carefully raise up on the hydraulic jacks until all the the components that were removed earlier can be re-installed.

30. Re-install the sway bar endlink lower mounts using the OE hardware.

31. Locate (4) S10325 shock sleeves and install them into the upper eyelets of the new shocks.



32. Install the shocks using the OE hardware

33. Re- attach the track bar to the axle bracket using the OE hardware.

34. Re-attach the wire harness clips to the breather vent hose. **The two plastic bolt caps will not go back onto the small bolts at the top of the harness.**

35. Reinstall the Tires and Wheels and carefully remove the vehicle from the Hoist or Jacks.

36. As mentioned at the end of the front install, if you have not already re-installed the front track bar to the axle bracket, do so at this time with the vehicle on the ground. We like to have a helper slightly turn the steering wheel to easily line up the hole on the track bar.

Installation Complete!

Check and double check to make sure that all steps were performed properly. After the completion of this install, Tuff Country Recommends taking the vehicle in for a complete front end alignment.

Tuff Country EZ-Ride Suspension recommends that a complete re-torque is done on all bolts associated with this suspension system. It is the customers responsibility to make sure that a re-torque is performed on all hardware associated with the system after the first 100 miles of installion. It is also the Customers responsibility to do a complete re-torque after every 3,000 miles or after every off road use. Neglect of following these steps could cause brackets to come loose and cause serious damage to the suspension system and to the vehicle.