



INSTALLATION INSTRUCTIONS

SIDE BAR

**05-15 NISSAN FRONTIER/05-12 SUZUKI EQUATOR CREW CAB PART
NUMBER 1-0572 1-5572**

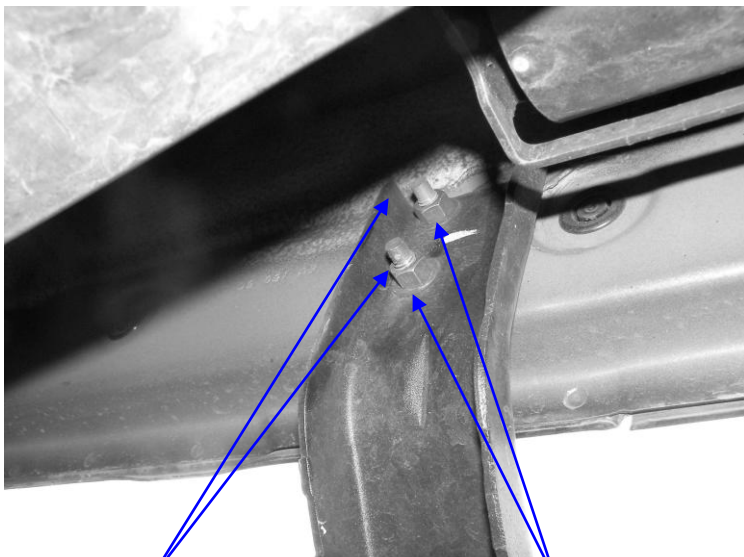
PARTS LIST:

1	Passenger/Right Side Bar	12	8-1.25mm x 30mm Hex Head Bolts
1	Driver/Left Side Bar	24	8X24mm O.D.X2mm Flat Washers
1	Front Passenger/Right Side Mounting Bracket	24	8mm Lock Washers
1	Rear Passenger/Right Side Mounting Bracket	12	8-1.25mm Nuts
1	Front Driver/Left Side Mounting Bracket		
2	Middle Brackets		
1	Rear Driver/Left Side Mounting Bracket		

PROCEDURE:

- 1. REMOVE CONTENTS FROM BOX. VERIFY ALL PARTS ARE PRESENT. READ INSTRUCTIONS CAREFULLY.**
- On the passenger/right side, if equipped, remove the existing running board by removing the four nuts holding mount to inside of body. Install the two passenger/right side mounting brackets with the removed stock nuts, leave nuts loose for now. **NOTE:** Holes in brackets are off set, install with holes towards front of truck, passenger/right side shown. *See Fig. #1*
- If not equipped with factory running boards – then use the four supplied 8mm nuts, washers & lock washers to install mounting brackets to truck.
- Repeat procedures 2 & 3 for driver/left side.
- Install side bar onto mounting brackets using four 8X30mm hex head bolts, four 8mm lock washers & four 8mm flat washers. Leave bolts loose – short end whole pattern installs towards the front of truck, passenger/right side shown.
- Repeat procedure #5 on driver/left side.
- Level and adjust side bars as desired and tighten.
- Do periodic inspections to the installation to make sure that all hardware is secure and tight.

FIG. #1 PASSENGER SIDE SHOWN

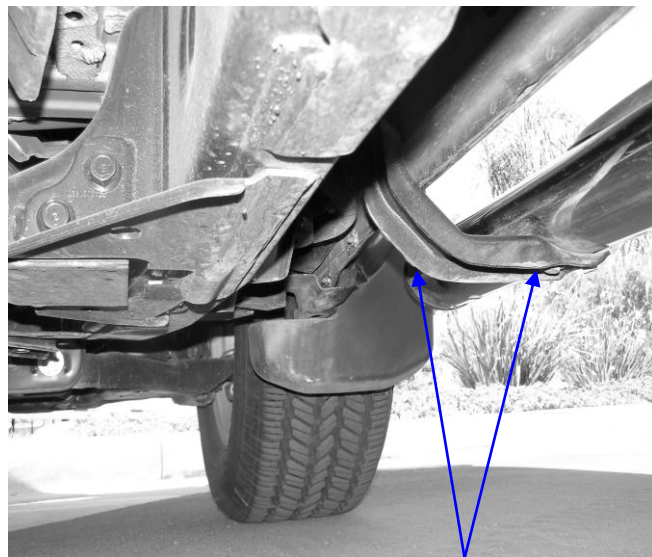


EXISTING NUTS

NOTE: If vehicle is not equipped with factory Sidebars use the included 8mm Hex Nuts, 8mm Lock Washers, 8mm Flat Washers

OFF CENTER HOLES

FIG. #2 PASSENGER SIDE SHOWN



SHORT END HOLE PATTERN