



INSTALLATION INSTRUCTIONS

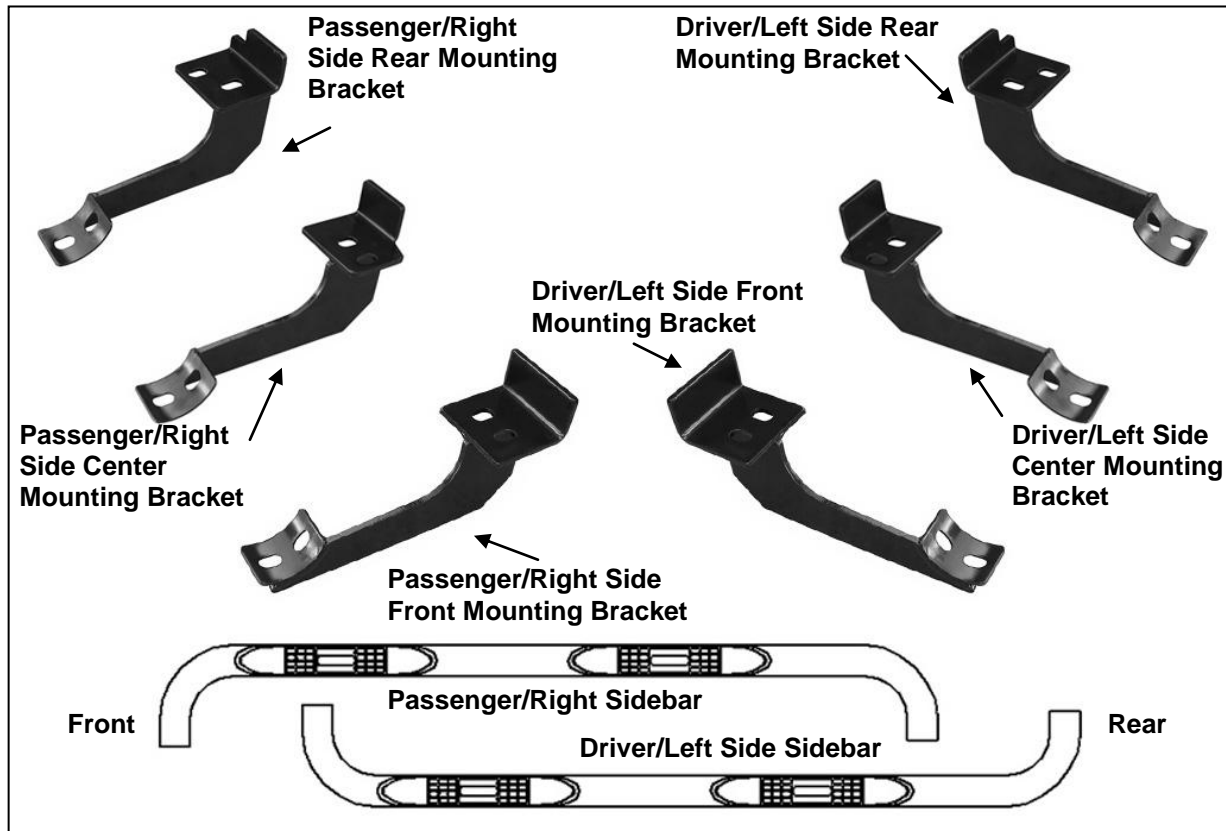
3" SIDEBAR

2006-2012 HONDA RIDGELINE

PART NUMBER 1-0882 1-5882

PARTS LIST:

1	Driver/Left Sidebar	1	Driver/Left Rear Mounting Bracket
1	Passenger/Right Sidebar	1	Passenger/Right Rear Mounting Bracket
1	Driver/Left Front Mounting Bracket	12	8-1.25mm x 30mm Hex Bolts
1	Passenger/Right Front Mounting Bracket	12	8-1.25mm x 25mm Hex Bolts
1	Driver/Left Center Mounting Bracket	24	8mm Lock Washers
1	Passenger/Right Center Mounting Bracket	24	8mm x 24mm x 2mm Flat Washers



PROCEDURE:

1. REMOVE CONTENTS FROM BOX. VERIFY ALL PARTS ARE PRESENT. READ INSTRUCTIONS CAREFULLY BEFORE STARTING INSTALLATION.
2. Starting on the driver side front of the vehicle, locate the (2) factory threaded holes in the bottom of the outer frame channel, **(Figure 1)**. **NOTE:** The threaded holes may be filled with plastic plugs or covered in insulation. Remove plugs or insulation before proceeding. Repeat this step to locate the center and rear, **(Figure 2)**, mounting locations. **NOTE:** There may be (4) sets of threaded holes along the floor panel. This installation will use the first, third and fourth sets of holes only.
3. Position the driver side Front Mounting Brackets up to vehicle. Hang the Bracket from the two threaded holes using the provided (2) 8mm x 30mm Hex Bolts, (2) 8mm Flat Washers and (2) 8mm Lock Washers, **(Figure 3)**. Snug but do not tighten hardware at this time.
4. Repeat Steps 2 - 3 to install the Center and Rear Mounting Brackets, **(Figures 4 & 5)**.
5. Carefully position the driver Sidebar onto the Mounting Brackets and attach it using the included (6) 8mm x 25mm Hex Bolts, (6) 8mm Flat Washers and (6) 8mm Flat Washers, **(Figures 3 - 5)**. Snug but do not tighten hardware at this time.
6. Align Sidebar properly and tighten all hardware.
7. Repeat Steps 2 - 6 for the passenger Sidebar installation.
8. Do periodic inspections to the installation to make sure that all hardware is secure and tight.

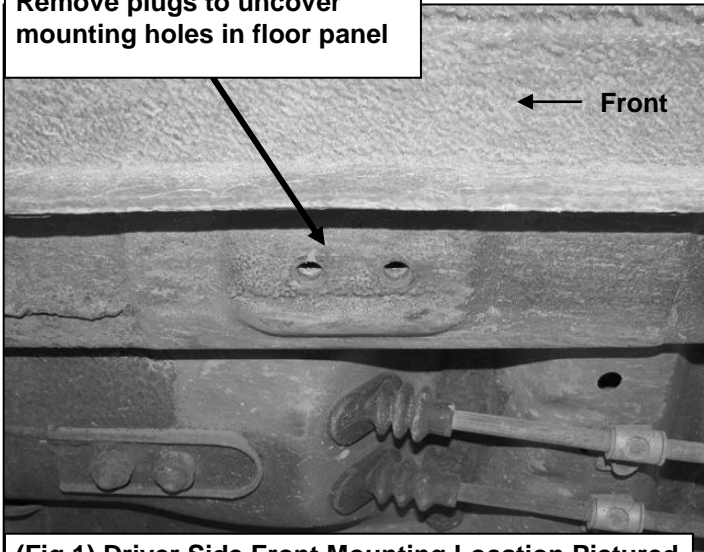
To protect your investment, wax this product after installing. Regular waxing is recommended to add a protective layer over the finish. Do not use any type of polish or wax that may contain abrasives that could damage the finish.

For stainless steel: Aluminum polish may be used to polish small scratches and scuffs on the finish. Mild soap may be used also to clean the Sidebar.

For gloss black finishes: Mild soap may be used to clean Sidebar.

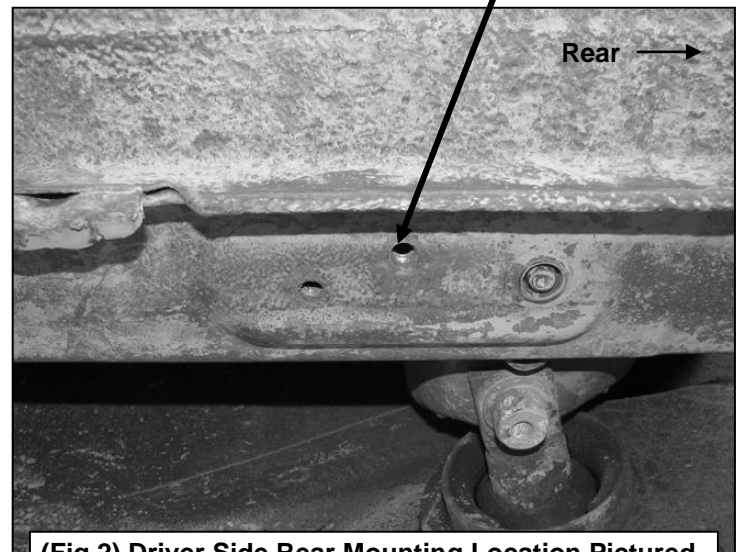
Driver Side Installation Pictured

Remove plugs to uncover mounting holes in floor panel



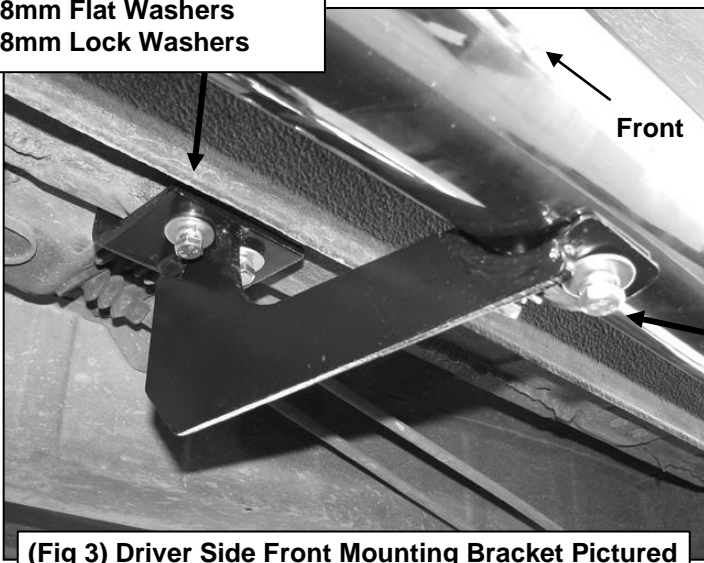
(Fig 1) Driver Side Front Mounting Location Pictured

Remove plugs to uncover mounting holes in floor panel



(Fig 2) Driver Side Rear Mounting Location Pictured

8mm x 30mm Hex Bolts
8mm Flat Washers
8mm Lock Washers

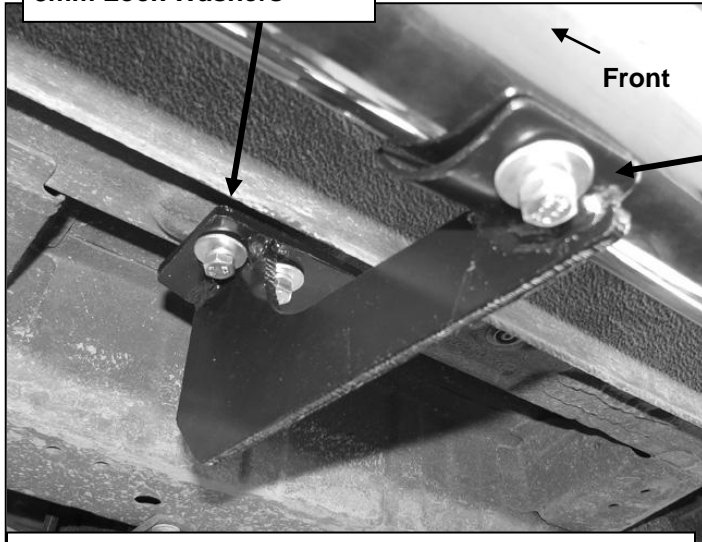


(Fig 3) Driver Side Front Mounting Bracket Pictured

8mm x 25mm Hex Bolts
8mm Flat Washers
8mm Lock Washers

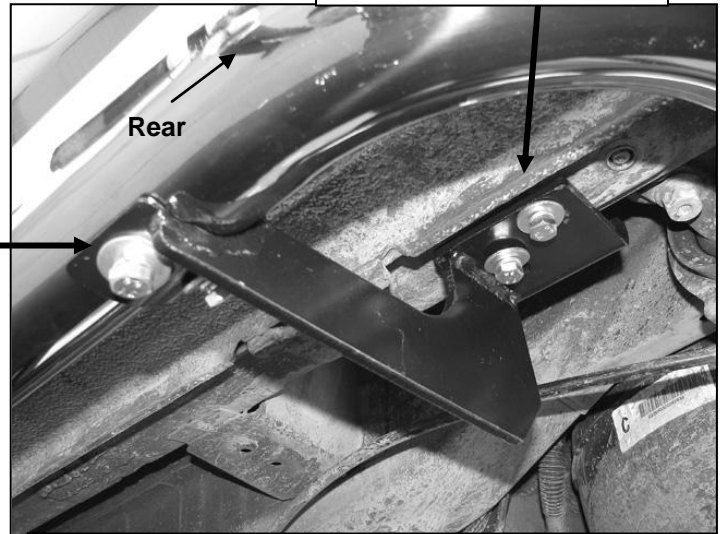
Driver Side Installation Pictured

8mm x 30mm Hex Bolts
8mm Flat Washers
8mm Lock Washers



8mm x 25mm Hex Bolts
8mm Flat Washers
8mm Lock Washers

8mm x 30mm Hex Bolts
8mm Flat Washers
8mm Lock Washers



(Fig 4) Driver Side Center Mounting Bracket Pictured

8mm x 25mm Hex Bolts
8mm Flat Washers
8mm Lock Washers

(Fig 5) Driver Side Rear Mounting Bracket Pictured



Complete installation