

# **INSTALLSTION INSTRUCTION**

## **SIDE BAR**

**CHEVY SILVERADO/GMC SIERRA 2500HD/3500 01-11;**

**1500HD-CREW CAB (INCL '04-05 1500LD) 02-11**

**PART NUMBER 100591&105591**

**CHEVY SILVERADO/GMC SIERRA 2500HD/3500 01-11;  
1500HD-CREW CAB (INCL '04-05 1500LD) 02-11**

**NOTE:** Please read this information before installing. Check components received with components listed below. **NO DRILLING REQUIRED** for installation of these side bars. To obtain correct installation, we recommend you to follow these step by step installation instructions carefully. Please take care when installing this product to protect the finish and your investment

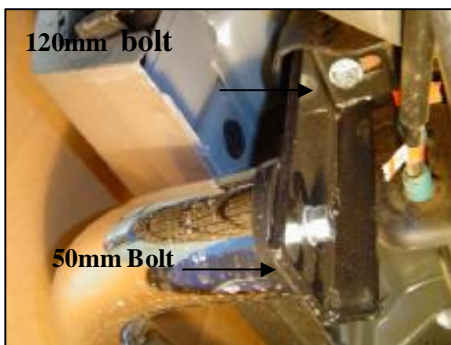
| <b>QTY</b> | <b>DESCRIPTION</b>                      |
|------------|---|
| 1          | Side Bar, left side                     |
| 1          | Side Bar, right side                    |
| 1          | Front Support Bracket-left              |
| 1          | Front Support Bracket-right             |
| 2          | Center Support Bracket                  |
| 1          | Rear Support Bracket-left               |
| 1          | Rear Support Bracket-right              |
| 4          | 3" Plastic Ring                         |
| 6          | 12mm x 120mm Hex Bolts-zinc plated      |
| 14         | 12mm Flat washer-zinc plated            |
| 10         | 12mm Split Lock washer-zinc plated      |
| 4          | 12mm x 1.75 x 50mm Hex Bolt-zinc plated |
| 2          | 10mm x 1.5 x 25mm Hex Bolt-zinc plated  |
| 4          | 10mm Flat washer-zinc plated            |
| 2          | 10mm Split washer-zinc plated           |

**Step One:** Locate left side brackets, 12mm x 120mm Hex Bolts(factory bolt), 12mm Lock washers and 12mm Flat washers. Remove front, center, and rear cab mount bolts located under the cab. Loosely attach brackets to the bottom of the cab mounts with the hardware listed in this step (Figure 1, 2 & 3).

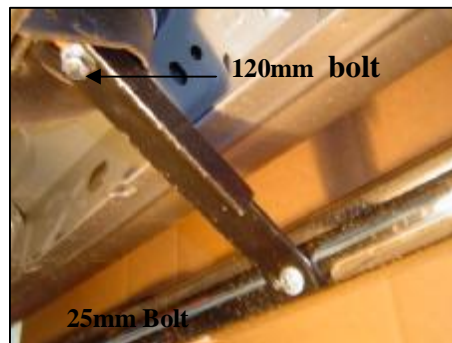
**Rear Bracket**

**Center Bracket**

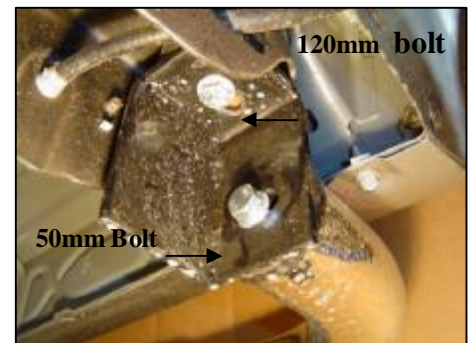
**Front Bracket**



**Figure 1**



**Figure 2**



**Figure 3**

**(NOTE: Pictures are only for reference. Actual brackets may be different. Installation is the same)**

**Step Two:** Secure the side bar to the front and rear brackets using the 12mm x 50mm Hex Bolts, Lock washers and Flat Washers provided. Secure the Center Bracket to the Side Bar using 8mm x 25mm Hex Bolts, Lock washers and Flat washers provided. After checking to make sure the sidebar is level and square with the side of the vehicle, completely tighten all hardware.

**Step Three:** Repeat steps one and two on opposite side of vehicle.