

# TonneauMate™



## SAFETY INSTRUCTIONS

1. Do not place objects on or against lid or framework.
2. Do not tie cargo to TonneauMate framework.
3. Never allow children or pets to occupy TonneauMate.
4. All mounting fasteners must be securely tightened before operation.

## OWNER/USER RESPONSIBILITIES

It is the responsibility of the owner/user to read this manual and comply with the operating procedures. The owner/user is also responsible for inspecting the TonneauMate, and for having parts repaired or replaced when worn or damaged.

Failure to follow safety instructions and warning labels could result in failure of your TonneauMate and/or personal injury.

## MESSAGES TO INSTALLER

- Always wear safety glasses and/or other necessary protective equipment when installing your TonneauMate.
- These instructions are complete for most pickup models. Additional instructions are included, if required for your truck. Please read entire manual before installing your TonneauMate.

## TOOLS REQUIRED

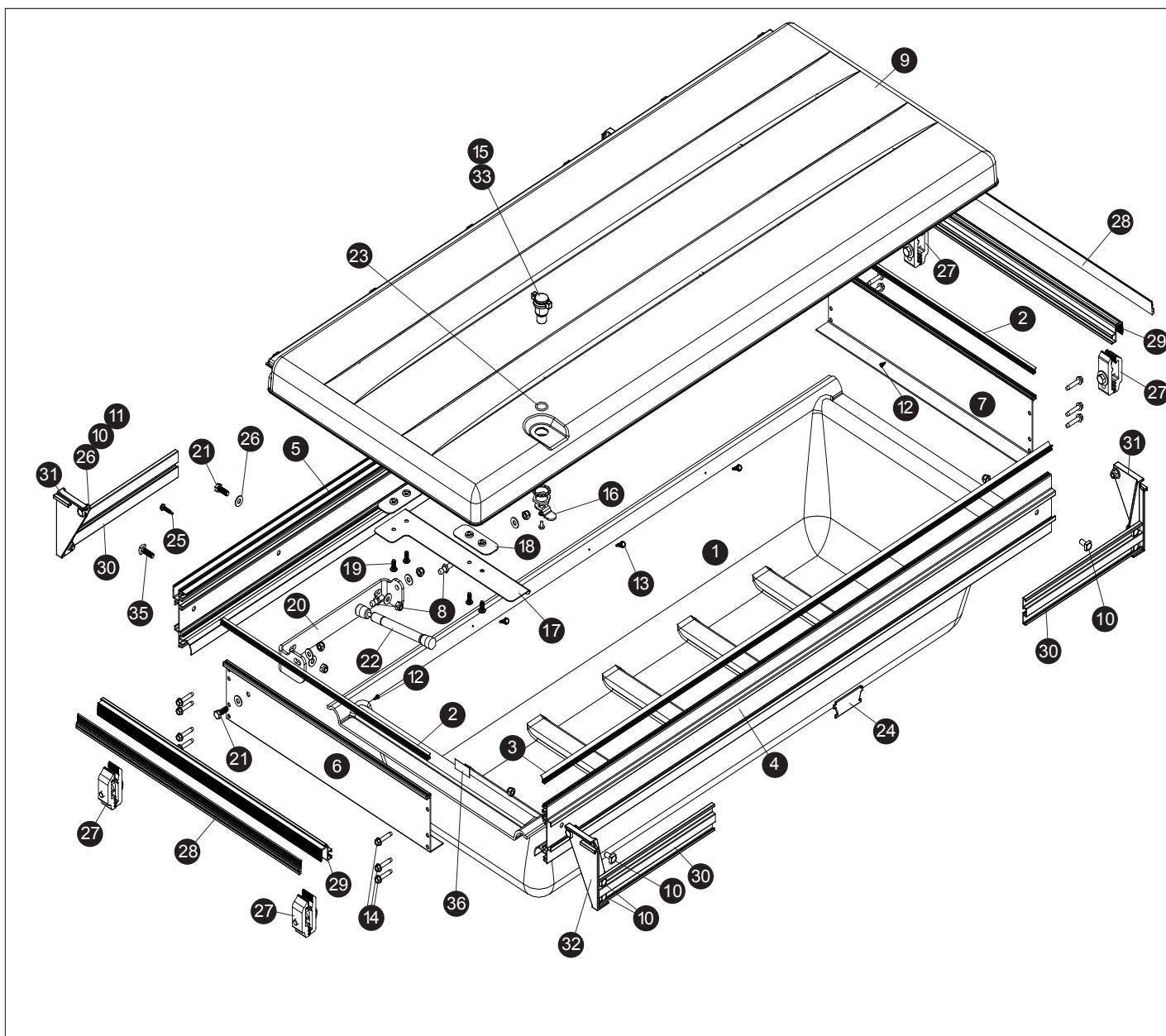
1/2" & 9/16" Socket

## TONNEAUMATE MAINTENANCE

TonneauMate can be hand washed with soap and water or cleaned in a car wash.

## TONNEAUMATE LOAD RATING

TonneauMate is rated for 200 lbs.



## TRUXEDO® TONNEAUMATE REPLACEMENT PARTS

|    |         |                           |    |         |                             |    |         |                           |
|----|---------|---------------------------|----|---------|-----------------------------|----|---------|---------------------------|
| 1  | 1704116 | Pan                       | 13 | 1704551 | Self Drill Screw Hex Head   | 25 | 1704552 | Self Drill Screw Hex Head |
| 2  | 1704234 | Side Lid Seal             | 14 | 1704123 | Self Tapping Screw Hex Head | 26 | 1700427 | Flat Washer               |
| 3  | 1704421 | Front Lid Seal            | 15 | 1704416 | Wing Handle Lock            | 27 | 1115190 | Clamp (one)               |
| 4  | 1704236 | Front Base                | 16 | 1704436 | Locking Cam Lever           | 28 | 1704178 | Rail Seal                 |
| 5  | 1704445 | Rear Base                 | 17 | 1704481 | Gas Spring Mount            | 29 | 1704157 | Mounting Rail             |
| 6  | 1704237 | Left Base                 | 18 | 1704474 | Backing Plate               | 30 | 1704239 | Support Arm Base          |
| 7  | 1704238 | Right Base                | 19 | 1704522 | Machine Screw               | 31 | 1704113 | Hanger Bracket Left       |
| 8  | 1703088 | Ball Stud                 | 20 | 1704500 | Gas Spring Bracket          | 32 | 1704114 | Hanger Bracket Right      |
| 9  | 1704435 | Lid (see 34)              | 21 | 1702926 | Machine Screw               | 33 | 1704362 | Two Keys (Not Shown)      |
| 10 | 1703595 | Square Head Screw         | 22 | 1704248 | Gas Spring                  | 34 | 1704404 | Lid Assy (9,17,18,19)     |
| 11 | 1700419 | Nylon Lock Nut            | 23 | 1704448 | Lock Seal                   | 35 | 1704499 | Square Head Screw         |
| 12 | 1703973 | Self Drill Screw Pan Head | 24 | 1704266 | TonneauMate Logo            | 36 | 1704512 | Patent Decal              |

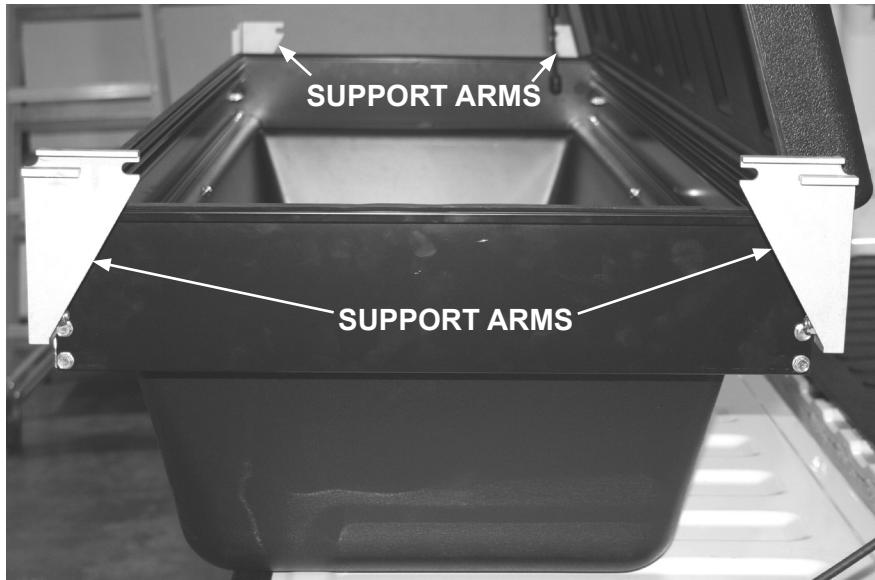
## SUPPORT ARM INSTALLATIONS

- 1 Remove all hardware from inside the toolbox. Slide support arms into channel by aligning square head bolt until support arm slides in. Orient left/right support arms as shown below. Do not tighten fasteners at this time. The support arms need to slide in and out for installation. Close lid for ease of installation.

### When Used With TruXedo Deuce Tonneau Cover:

Deuce kits will not need the mounting rails, seals, or adjustable clamps. For ease of installation on the Deuce, roll cover up and open Deuce from front. Go to step 3 for installation.

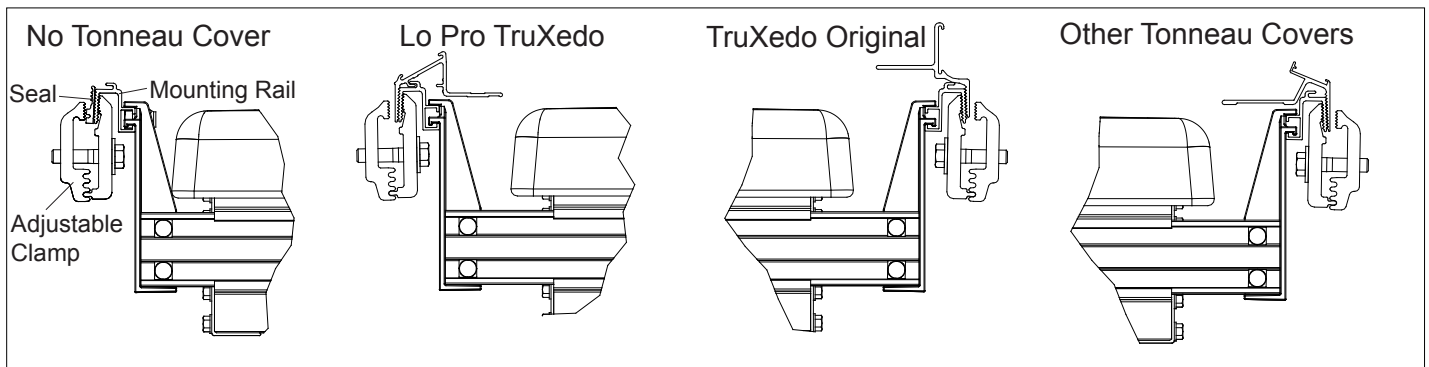
End View  
of Toolbox



## MOUNTING RAIL INSTALLATIONS

- 2 The toolbox can be mounted with many different applications. Choose one best for your application. When choosing the location to mount the toolbox, keep in mind to allow room for opening lid. The illustrations below show a few different ways to mount the mounting rail.

**Note:** The toolbox may be mounted at the front, center, or rear of truck box. Use two adjustable clamps per rail, keep clamps towards the ends of mounting rail. Use rail seal only with no tonneau cover applications or some top mount applications. No seal is needed when mounting to an existing tonneau cover like the ones shown below.

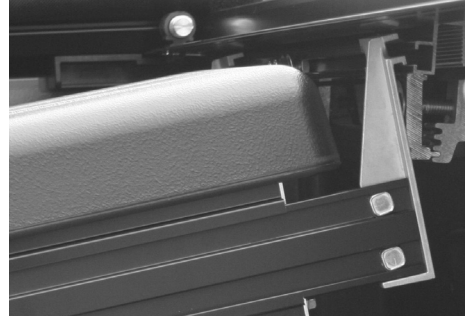
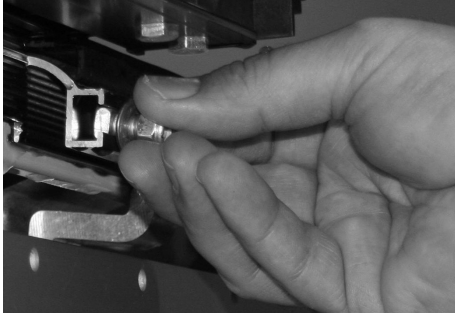


Install clamps  
towards end of  
mounting rail



## TOOLBOX AND FASTENERS INSTALLATION

- 3** Slide two square head bolts with washers and nuts to the center of the mounting rail.
- 4** Lift and hook one side of toolbox to mounting rail.



- 5** Lift and hook other side of toolbox to mounting rail.
- 6** Open lid to assure proper clearance.



- 7** Once the toolbox has been positioned, slide the fasteners over the hanger brackets and tighten securely. Tighten the four lock nuts on the inside of the toolbox to keep from sliding from side to side.

