

# TRIPLE-R

H I G H P E R F O R M A N C E L I G H T I N G



## **VOLVO XC90 2015+** LOWER GRILLE MOUNTING KIT FOR LINEAR-18

---

**FITTING INSTRUCTIONS**

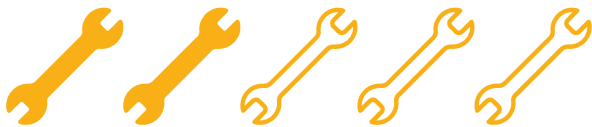
## TECHNICAL SUPPORT

For additional support, please contact us by email: [sales@triple-r-lights.com](mailto:sales@triple-r-lights.com)

## WHAT'S REQUIRED

- 1x LINEAR-18
- 1x ONE LAMP HARNESS KIT
- 1x CANBUS HIGHBEAM INTERFACE (OPTIONAL)
- 1x VOLVO XC90 (2015+) MOUNTING KIT

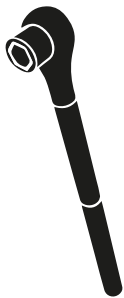
## DIFFICULTY LEVEL



## TOOLS REQUIRED



ALLEN KEY SET



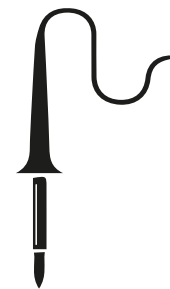
METRIC  
SOCKET SET



WIRE STRIPPERS  
AND RATCHET CRIMPERS



WIRE CUTTERS



SOLDERING IRON  
(OPTIONAL)



DRILL BIT  
5MM



PHILLIPS / T-25 TORX  
SCREWDRIVER

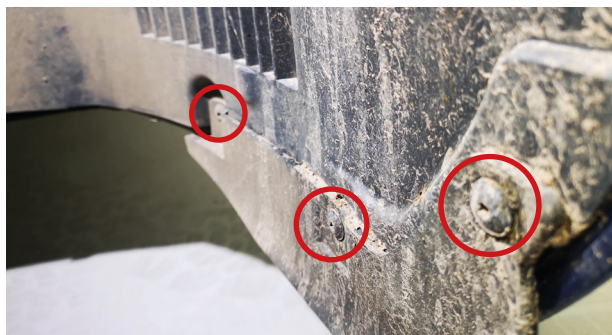


RIVET GUN

## PRE-INSTALLATION CHECKS

1. Ensure battery is disconnected.

## INSTALLATION PROCESS



### STEP 1

Remove 3x T25 screws on bottom of each wheel arch.



### STEP 2

Remove all Torx screws from underside of front bumper.



### STEP 3

Remove all screws from protective under-tray.



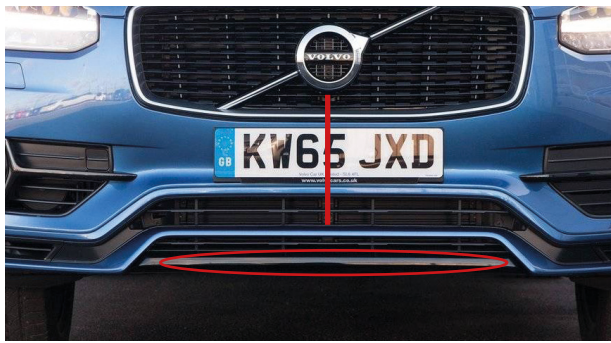
### STEP 4

Remove the centre under-tray.



### STEP 5

Remove the front under-tray .



### STEP 7

Remove lower valence as circled and mark out the centre of the bumper using the centre of the active grill as reference.

Take note of where you will mount the brackets.



### STEP 7

Use a hacksaw/blade to cut the rubber drape covering the lower crash bar in order to drill the 4x 5mm holes for the rivets and fit the brackets.



### STEP 7

Secure the Linear side mounting brackets to the bumper beam brackets as shown.



### STEP 7

For the best vertical position we recommend mounting the brackets 10mm from the bottom of the crash bar as shown.

Mark where you will mount the brackets and drill 2x 5mm holes for each bracket and mount the brackets using the included rivets.



### STEP 6

Mount the light bar to the Linear side brackets using the fixtures included.

## WIRING UP YOUR LIGHT



### STEP 1

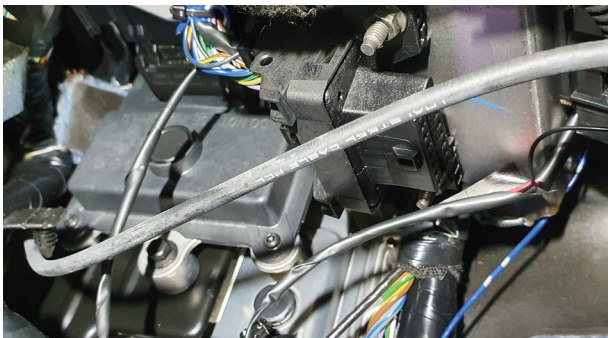
If the vehicle doesn't produce a 12V signal when highbeam is activated, you will need to wire the lights via the Lazer CAN Interface. If you do not need a CANM8, skip to step 4.

To do this you would need to feed the fine red cable from Lazer wiring kit through the cable entry grommet (located at the bulkhead).



### STEP 2

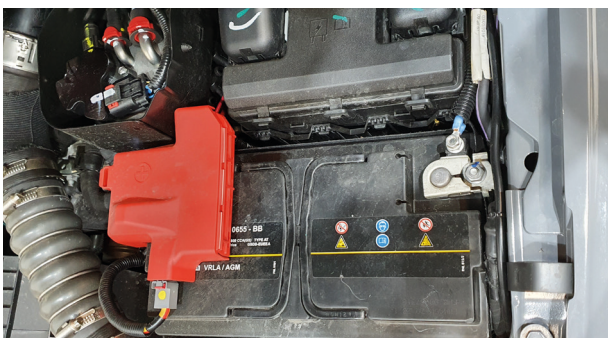
Locate the cable inside the vehicle which feeds through the cable grommet to the footwell.



### STEP 3

Install the CAN interface, and connect then CAN HI and CAN LO wires (located at the CEM (Body control module)).

CAN HI: Grey/Brown  
 CAN LO: Yellow/Purple



### STEP 4

Install the relay and connect the live and earth to the battery, the high beam trigger is taken from the back of the headlight.



### STEP 5

Feed the lamp connector(s) through to the front of the bumper and connect to lamp.

Re-connect battery and test lamp is working correctly before re-installing the bumper beam skirt.



**TRIPLE-R**

HIGH PERFORMANCE LIGHTING

**WWW.TRIPLE-R-LIGHTS.COM**

[sales@triple-r-lights.com](mailto:sales@triple-r-lights.com)

Triple-R Lights LLC, 16192 Coastal Highway,  
Lewes, Delaware, 19958, USA



**UK BUILT | US DRIVEN**